

# Sunrise Wind

## Project Overview

The New York State Energy Research and Development Authority (NYSERDA) has selected Sunrise Wind to negotiate an Offshore Wind Renewable Energy Certificate (OREC) Agreement for an 880 MW offshore wind farm.

Sunrise Wind brings unparalleled experience in developing offshore wind to New York. Ørsted is the global leader in offshore wind, while Eversource is New England's largest energy company and premier electric transmission builder.

The project also brings economic development to New York State, fostering the growth of the offshore wind industry by investing in major port infrastructure upgrades:

- A new Operations & Maintenance Hub in Port Jefferson, creating up to 100 new and permanent full-time jobs and cementing Long Island as a key anchor point for New York's offshore wind future
- \$11 million for major port infrastructure upgrades as part of the New York Ports Infrastructure Development Fund and Upstate New York Workforce Development Fund

## A Good Neighbor

Ørsted and Eversource are committed to being a valued part of the Long Island community. The project team is working with all mariners, including the fishing community, environmental advocates and regulatory authorities to ensure the project is designed, built and operated according to our world-class standards.

## CONTACT US

### Edward G. LeBlanc

Marine Affairs Manager,  
Northeast  
EDWLE@orsted.com  
978-447-2737

### Email

info@sunrisewindny.com

### Website

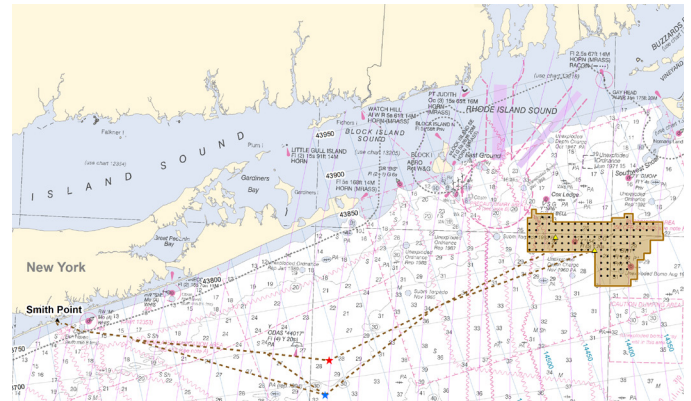
sunrisewindny.com  
us.orsted.com/Mariners

### Mike Evans

Permitting Manager  
MICEV@orsted.com  
614-218-4286

### Twitter

@OrstedUS  
@EversourceCorp



### → WHO

50/50 partnership between Ørsted and Eversource, with support from Con Edison and the New York Power Authority

### → WHAT

Approximately 115 towers in a 1x1 nautical mile E/W + N/S grid pattern offshore wind farm, with the potential capacity to power more than half a million homes

### → WHEN

Expected to be fully operational by 2024

### → WHERE

At least 30 miles east of Montauk Point, virtually unnoticeable to Long Island residents and beachgoers; planned interconnection point is the Holbrook and West-Bus substations in the town of Brookhaven within the Long Island Power Authority's (LIPA) service territory

### → WHY

100% renewable energy to help realize New York's vision of becoming a leader in clean energy