



Temporary U.S. Coast Guard Safety Zones: Offshore Wind Farm Construction

What is a U.S. Coast Guard (USCG) Safety Zone?

An area of water, approximately 500-meters (one quarter nautical mile radius) around each offshore wind foundation position, which may not be entered by any vessel except those with direct permission from the USCG.

Why is there a Safety Zone?

The USCG may establish Safety Zones around Outer Continental Shelf facilities being constructed, maintained, or operated to promote the safety of life, property, and the environment. To minimize potential risks to mariners and vessels, the USCG has determined that it is warranted to establish a Safety Zone within a 500-meter radius of each offshore wind foundation position during active construction.



Scan here to view the USCG safety zone regulations

When are Safety Zones in effect?

These Safety Zones are temporary, and the length of implementation depends on weather and the duration of construction operations.

Enforcement periods and the exact locations of the Safety Zone will be announced in the weekly First Coast Guard District Local Notice to Mariners (LNM), published each Tuesday.

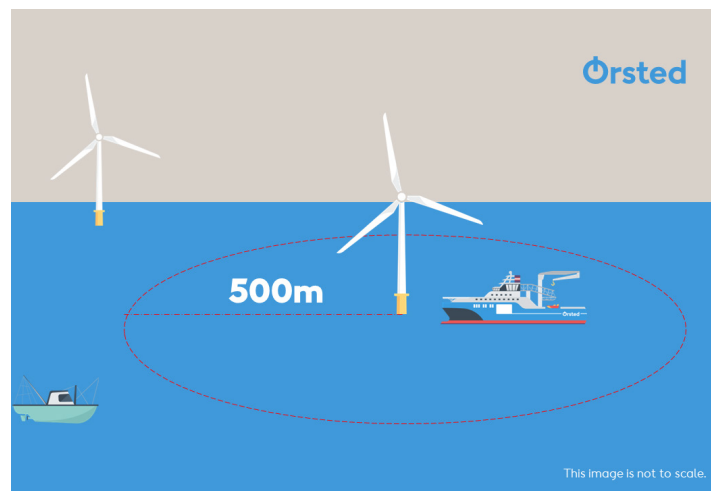
Mariners may subscribe to the LNM on the Navigation Center website <https://www.navcen.uscg.gov>.

Safety Zones may be in effect from the start of construction until the end of construction. A USCG vessel or boat does not need to be on scene for the Safety Zone to be enforced.

Where are the Safety Zones?

The Safety Zones encompass a 500-meter radius around each foundation (see Figure 1).

Figure 1



ⓘ An example of a Safety Zone

Can I get permission to travel through the Safety Zone?

When enforced, unauthorized vessels or persons will not be permitted to enter the Safety Zone without obtaining permission from the First Coast Guard District Commander or a designated representative.

If permission is granted, all persons and vessels must comply with the USCG instructions.

No offshore wind vessel or employee may grant permission to enter the Safety Zone.

Is the wind farm closed to navigation or fishing?

No, Safety Zones are defined and temporary. During the enforcement period, areas outside of a Safety Zone are open to navigation and fishing. Mariners are always subject to the International Regulations for Preventing Collisions at Sea (COLREGS).



ⓘ An example of a Safety Vessel

How do I know if a zone is being enforced?

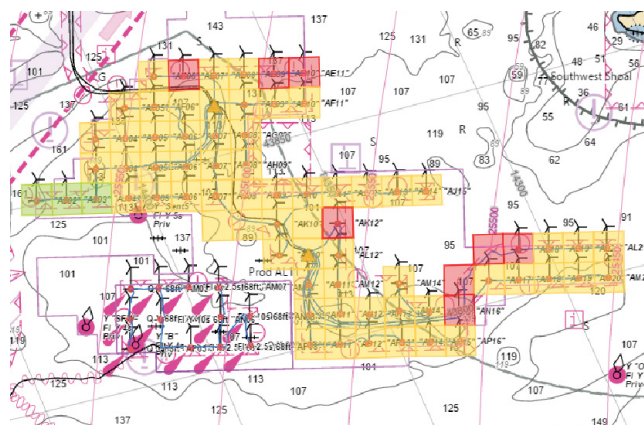
There are two easy methods to determine if a Safety Zone is being enforced:

Listen: When mariners are underway, they should listen to the USCG’s safety broadcasts that are typically announced on VHF channel 16 and broadcast on VHF channel 22A or call 508-457-3211 speak to a USCG asset if one is on scene or speak to the safety vessel on scene via VHF channels 13, 16, or 80A.

Read: Information is published online on both the USCG website and in Ørsted’s Mariners Briefings.

Note: Ørsted uses a “Traffic Light” notification model to demonstrate our on-water activity forecast. Safety Zones may be enforced in areas of active construction marked in red. Ørsted’s “Traffic Light” model generally illustrates a three-day outlook (see Figure 2).

Figure 2



ⓘ An example of a Zone Chart during Revolution Wind construction

■ Area of active construction or current high activity ■ Planned activity or current light activity ■ No disruption

Contact Us

The Ørsted Marine Affairs team is committed to maintaining a strong working relationship with all mariners. We aim to avoid or mitigate impacts through open and honest communication with the goal of coexistence and a safe, navigable ocean space.

For general questions, contact Ørsted’s Marine Affairs Team at MANEP@orsted.com