

Navigating an Ørsted wind farm

Simulation demonstration

Opportunity to participate in a full-mission simulation demonstration navigating within the Ocean Wind offshore wind farm.

Ørsted is soliciting interest from commercial and excursion (charter/ party) fishers who may wish to attend a demonstration, in a full-mission navigation simulator, transiting through the Ocean Wind offshore wind farm. This simulated navigation demonstration in a full-mission fishing vessel module will provide a near real-life experience of transiting within Ocean Wind in various sea states, including changing visibility and traffic conditions. Several fishers have already experienced the simulation demonstration and found it to be very helpful in understanding issues related to navigating within a wind farm.

Date:

TBD depending on interest received.

Place:

Maritime Institute of Technology and Graduate Studies (MITAGS), in Linthicum Heights, MD. More information about MITAGS can be found at www.mitags.org.

Attendance:

By invitation only. If you are interested in attending, please reply to one of the individuals listed below. If you are then selected to attend, we will follow-up with a written invitation.

Objectives:

Through this demonstration Ørsted seeks to provide mariners with:

1. An overview of commercial scale wind turbine arrays including information regarding construction, operations, maintenance, and emergency procedures.
2. The opportunity to operate the simulator in a variety of conditions to provide a realistic, first-hand understanding of scale and navigability of operational turbine arrays.
3. A venue to discuss navigation safety in and around offshore wind installations.

Sample Agenda:

20 minutes: Welcome and introductions

40 minutes: Overview of Ocean Wind and vessel bridge simulator

1 hour: Operation of the simulators through various scenarios

15 minutes: Break

1 hour: Operation of the simulators through various scenarios

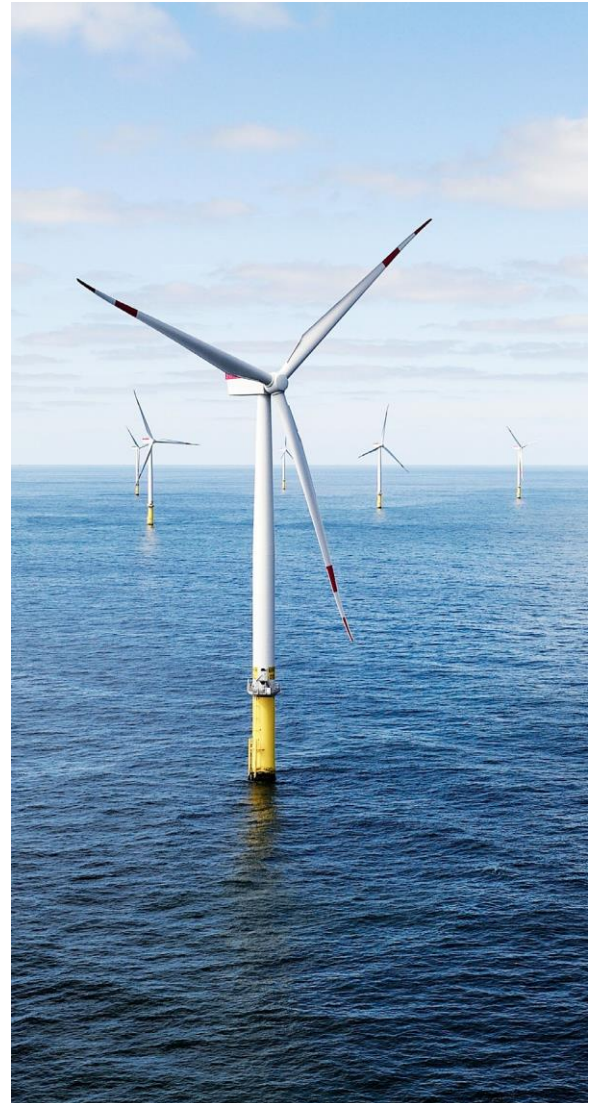
(continued)

45 minutes: Evaluation and discussion

Logistics:

MITAGS is currently following all State of Maryland Guidelines for COVID preparedness. You are asked to wear a mask while at MITAGS and COVID screenings are being conducted prior to admittance.

MITAGS is located at 692 Maritime Blvd, Linthicum Heights, MD, 21090.



Space is limited, especially in view of COVID precautions in place.

If you are interested in receiving an invitation to attend, please reply by April 30, 2021 to:

Rodney Avila at RODAV@orsted.com or

Kara Gross at KARGR@orsted.com

