

Notice to Mariners

South Fork Fisheries Monitoring Activity

Beam Trawl Survey, South Fork Wind Farm

Communication:

From late October 2020 through October 2022, Commercial Fisheries Research Foundation will be working with the F/V Mister G to conduct a beam trawl survey in the vicinity of South Fork Wind Farm, along with two reference sections outside the lease area. The beam trawl survey will be completed once a month during this period. During each trip, three tows will be made in the SFWF work area, and three tows will be made in each of the reference areas. See the attached chartlet for an outline of the areas that will be surveyed.

Vessel:

F/V Mister G
Flag: USA
LOA: 45 ft
Beam: 16.5 ft

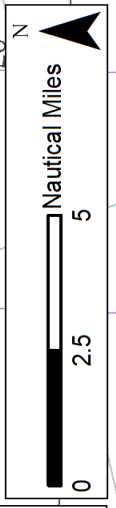
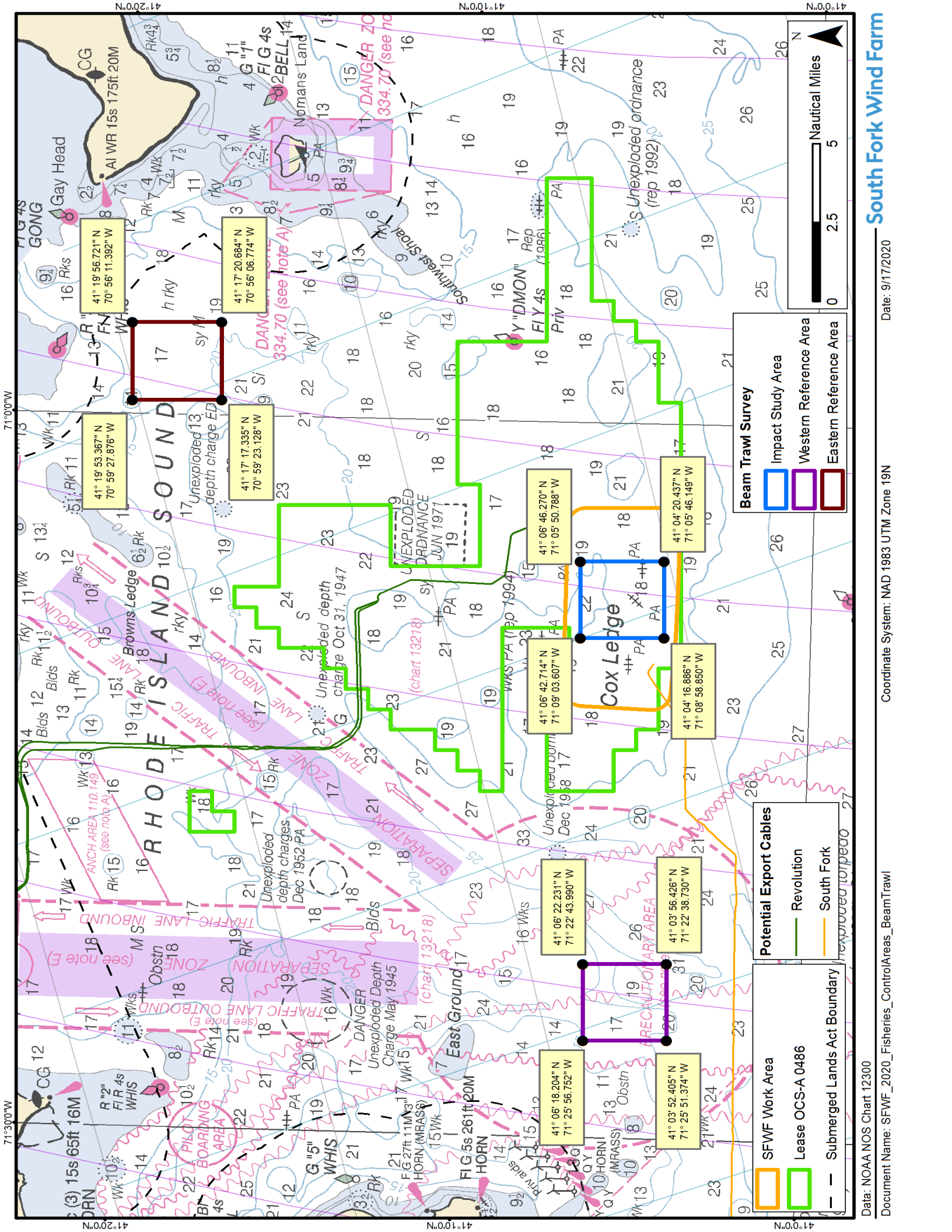


VHF channels 13 and 16 will be monitored at all times

For more information, contact:

Caitlin O'Mara
Marine Affairs Coordinator
Phone: 857-332-4487
Email: caima@orsted.com

Greg DeCelles
Senior Environment & Permitting Specialist
Phone: 857-408-4497
Email: grede@orsted.com



Beam Trawl Survey

- Impact Study Area
- Western Reference Area
- Eastern Reference Area

Potential Export Cables

- Revolution
- South Fork

- SFWF Work Area
- Lease OCS-A 0486
- Submerged Lands Act Boundary

**41° 19' 53.367" N
70° 59' 27.876" W**

**41° 17' 20.684" N
70° 56' 06.774" W**

**41° 17' 17.335" N
70° 59' 23.128" W**

**41° 06' 42.714" N
71° 09' 03.607" W**

**41° 06' 18.204" N
71° 25' 56.752" W**

**41° 06' 22.231" N
71° 22' 43.990" W**

**41° 03' 52.405" N
71° 25' 51.374" W**

**41° 04' 16.886" N
71° 08' 58.850" W**

**41° 04' 20.437" N
71° 05' 46.149" W**

**41° 06' 46.270" N
71° 05' 50.788" W**

**41° 03' 56.426" N
71° 22' 38.730" W**

**41° 19' 56.721" N
70° 56' 11.392" W**

**41° 06' 18.204" N
71° 25' 56.752" W**

**41° 06' 22.231" N
71° 22' 43.990" W**

**41° 03' 52.405" N
71° 25' 51.374" W**

**41° 04' 16.886" N
71° 08' 58.850" W**

**41° 04' 20.437" N
71° 05' 46.149" W**

**41° 06' 46.270" N
71° 05' 50.788" W**

**41° 17' 20.684" N
70° 56' 06.774" W**

**41° 17' 17.335" N
70° 59' 23.128" W**

**41° 19' 53.367" N
70° 59' 27.876" W**

**41° 06' 42.714" N
71° 09' 03.607" W**

**41° 06' 18.204" N
71° 25' 56.752" W**

**41° 06' 22.231" N
71° 22' 43.990" W**

**41° 03' 52.405" N
71° 25' 51.374" W**

**41° 04' 16.886" N
71° 08' 58.850" W**

**41° 04' 20.437" N
71° 05' 46.149" W**

**41° 06' 46.270" N
71° 05' 50.788" W**

**41° 17' 20.684" N
70° 56' 06.774" W**

**41° 17' 17.335" N
70° 59' 23.128" W**

**41° 19' 53.367" N
70° 59' 27.876" W**

**41° 06' 42.714" N
71° 09' 03.607" W**

**41° 06' 18.204" N
71° 25' 56.752" W**

**41° 06' 22.231" N
71° 22' 43.990" W**

**41° 03' 52.405" N
71° 25' 51.374" W**

**41° 04' 16.886" N
71° 08' 58.850" W**

**41° 04' 20.437" N
71° 05' 46.149" W**

**41° 06' 46.270" N
71° 05' 50.788" W**