

# Notice to Mariners

## South Fork Wind Fisheries Monitoring Activity Fish Pot Survey, South Fork Wind Farm

From June 2021 through December 2021, Commercial Fisheries Research Foundation will be working with the F/V Harvest Moon in the South Fork Wind Farm to complete a pre-construction fish pot survey for black sea bass, scup, and other species. The fish pots will be sampled once per month during this period. The attached chart shows the locations that will be sampled each month. The fish pots will be set in a North-South direction, and the trawls are approximately 2600 feet long, with 18 pots on each trawl. The trawls will be marked with a large yellow buoy on the north end of the trawl, and two orange buoys on the south end of the trawl. The buoys will be labeled as research gear.

No catch will be landed from the fisheries monitoring surveys, and all animals will be returned to the water as quickly as possible after biological sampling is completed.

### Communication:

VHF Channels 13 and 16 will be monitored at all times.

### Vessels:

#### F/V Harvest Moon

Captain Joe Baker

Flag: USA

LOA: 40 ft

Beam 16 ft



### For more information, please contact:

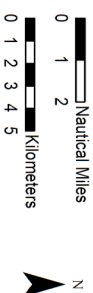
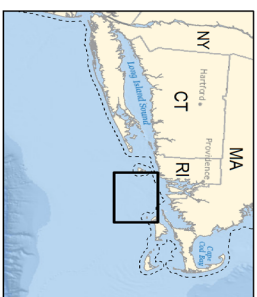
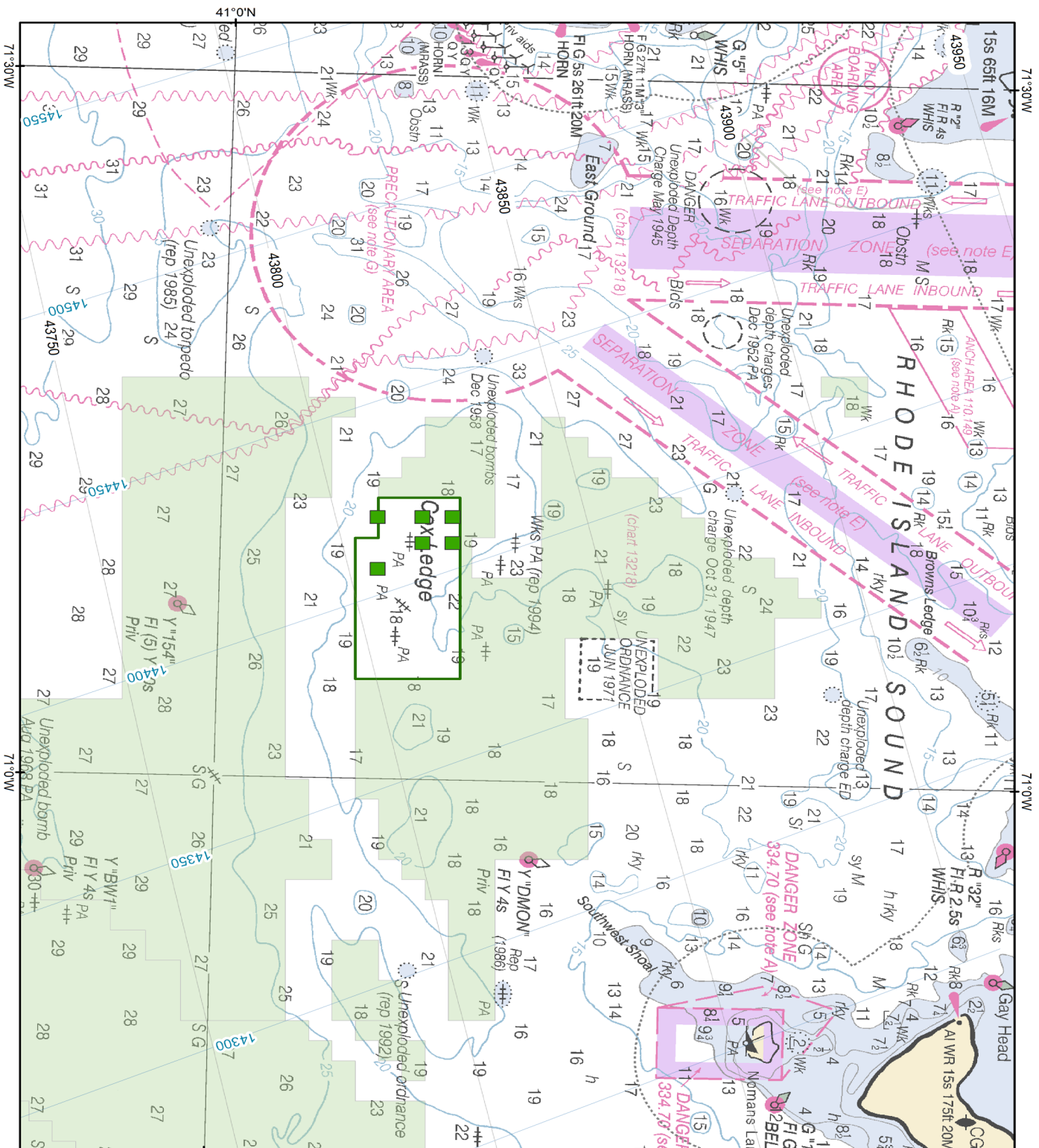
Greg DeCelles

Fisheries Science Specialist

Phone: 857-408-4497

Email: [grede@orsted.com](mailto:grede@orsted.com)





**Orsted**

Depth Soundings in Fathoms  
 Source: BOEM, NOAA Chart 12300  
 Projection: NAD 1983 UTM Zone 19N (meters)  
 Date: 4/22/2021 SFW01