

Northeast Survey Activity

Mariners Briefing

Date of notice: June 17th, 2021

Notice no. 200

Overview

These briefings are intended to update mariners on marine operations for Ørsted survey activities. Survey operations are planned for locations throughout the lease areas (see chart) and are expected to last several months. These operations involve only the survey phase of the projects.

Mariners briefings are submitted on Mondays and Thursdays to the U.S. Coast Guard and distributed to the fishing community and interested mariners on our website at: us.orssted.com/mariners or via email upon request through Chris Sarro (CHSAR@orssted.com).

Vessels will designate a working channel on VHF 16 daily at 0600 and 1800 to communicate work plan for the next 12 hours

About the Wind Farms

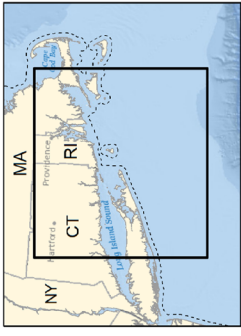
Sunrise Wind is a 50-50 joint venture between Ørsted and Eversource.

Sunrise Wind (SRW) is a planned offshore wind farm located 30 miles east of Montauk Point.

Ongoing SRW survey activities

- Projected End: October 2021*

*Sunrise Wind survey operations were initially scheduled to conclude by end of August 2021, with two vessels working on site through the month of July. Due unavoidable scheduling delays and resource constraints, the decision has been made to complete the work with a single vessel, the FUGRO EXPLORER. This means that there will now only be one vessel working offshore on the Sunrise Wind project. With this change, operations will temporarily suspend in the Sunrise Wind lease area from mid-July to approximately the end of August, when surveys will re-commence in that area and conclude in October. While the survey end date has been extended, the total amount of time on site to complete the work remains relatively the same.



Orsted Survey Zones

1-24

3 Nautical Mile State Waters Boundary

Revolution and South Fork Wind Lease OCS-A 0486

Proposed South Fork Wind Export Cable

Potential Revolution Wind Export Cable Route Alternatives

Lease OCS-A 0500

Sunrise Wind Lease OCS-A 0487

Potential Sunrise Wind Export Cable Alternatives



Nautical Miles
0 5 10

Kilometers
0 10 20

Depth Soundings in Fathoms

Source: BOEM, NOAA Chart 12300 (2012)

Projection: NAD 1983 UTM Zone 19N (meters)

Date: 3/10/2020 Survey Zones



Massachusetts

Rhode Island

Connecticut

Brayton Point

Quonset

Nearshore Management Area 6

Hither Hills

Beach Lane

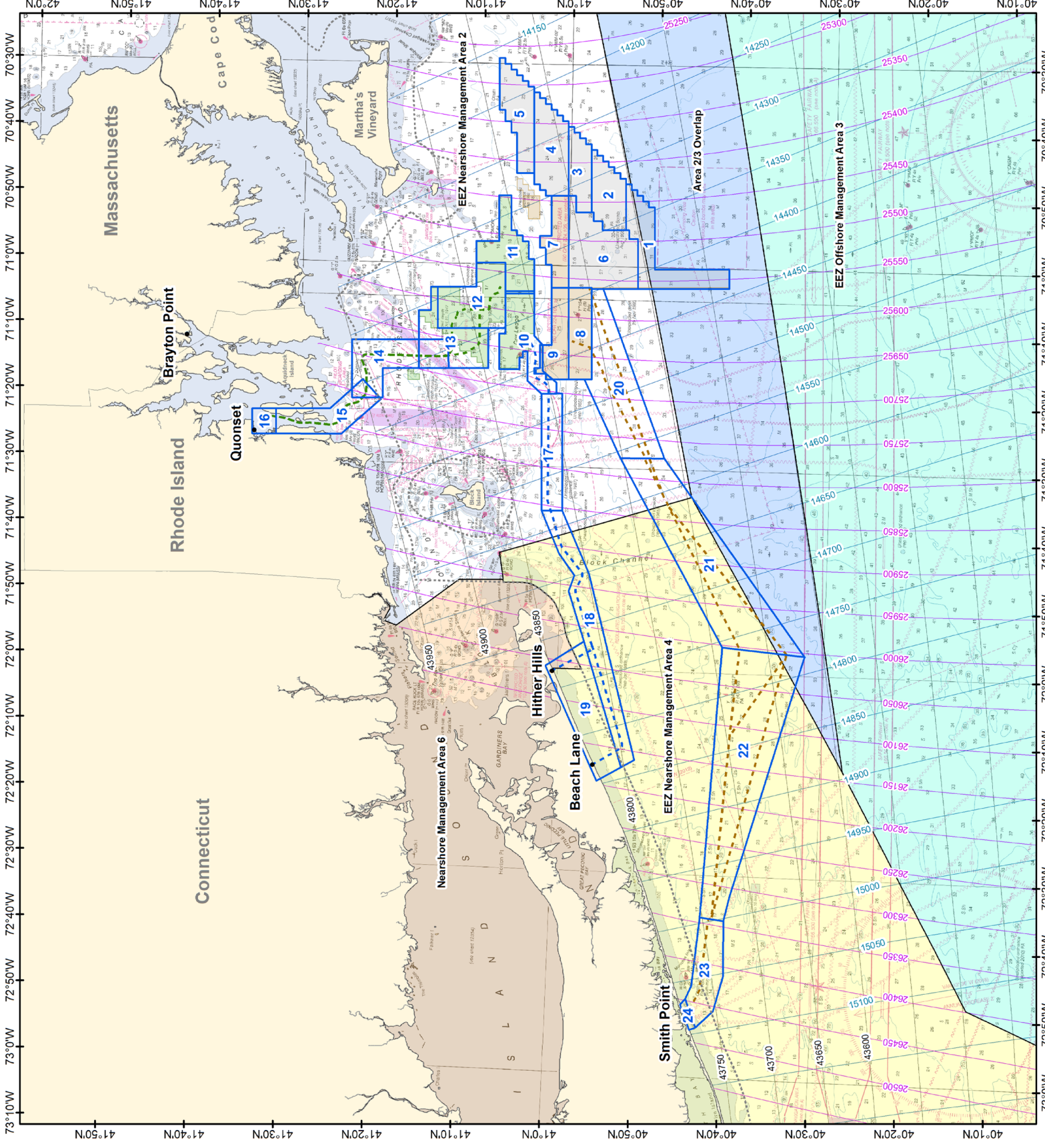
Smith Point

EEZ Nearshore Management Area 2

EEZ Nearshore Management Area 4

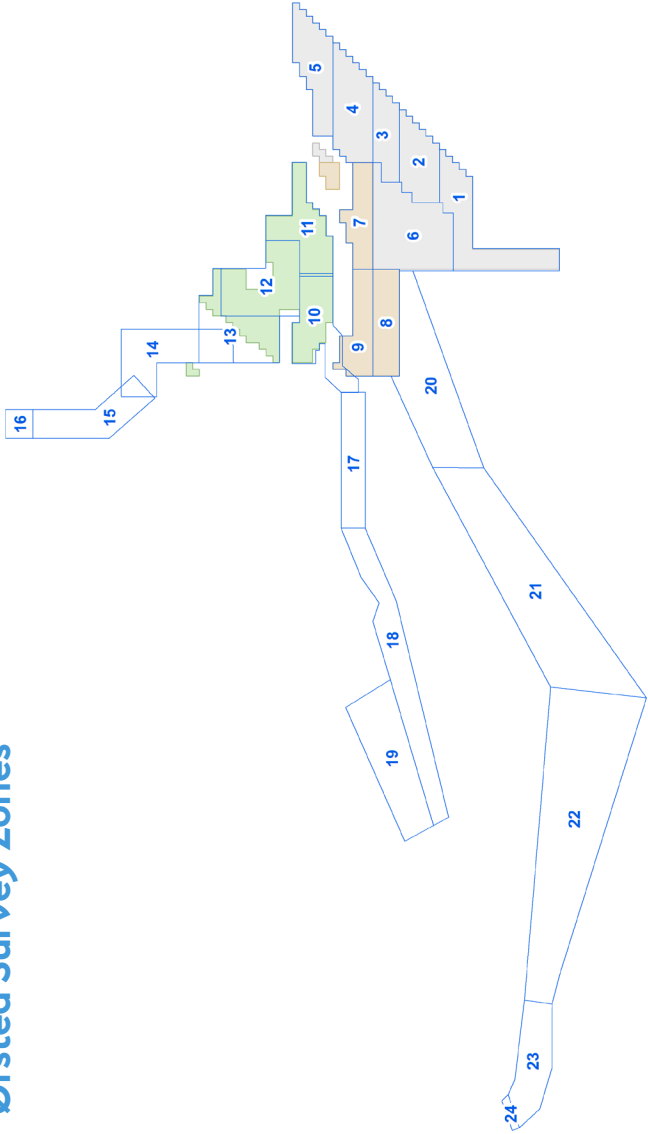
EEZ Offshore Management Area 3

Area 2/3 Overlap



Northeast Survey Activity

Ørsted Survey Zones



Survey Zone ID	Latitude	Longitude
1	40° 52.166' N 71° 03.247' W	
	40° 41.852' N 71° 02.929' W	
	40° 41.903' N 71° 00.019' W	
	40° 50.330' N 71° 00.272' W	
	40° 50.485' N 70° 51.026' W	
	40° 53.780' N 70° 47.698' W	
	40° 53.671' N 70° 54.505' W	
	40° 53.780' N 70° 47.698' W	
2	40° 57.748' N 70° 42.673' W	
	40° 57.603' N 70° 51.978' W	
	40° 53.671' N 70° 54.505' W	
	40° 57.603' N 70° 51.978' W	
3	40° 57.603' N 70° 51.978' W	
	40° 57.748' N 70° 42.673' W	
	41° 00.391' N 70° 39.310' W	
	41° 00.236' N 70° 49.586' W	
	41° 00.236' N 70° 49.586' W	
	41° 00.391' N 70° 39.310' W	
	41° 04.353' N 70° 34.274' W	
	41° 04.179' N 70° 46.267' W	
4	41° 04.179' N 70° 46.267' W	
	41° 04.179' N 70° 46.267' W	
	41° 04.353' N 70° 34.274' W	
	41° 08.311' N 70° 29.221' W	
5	41° 08.311' N 70° 29.221' W	
	41° 06.213' N 70° 40.320' W	
	41° 06.124' N 70° 46.319' W	
	41° 06.124' N 70° 46.319' W	

Survey Zone ID	Latitude	Longitude
6	40° 52.166' N 71° 03.247' W	
	40° 53.671' N 70° 54.505' W	
	40° 57.603' N 70° 51.978' W	
	41° 00.236' N 70° 49.586' W	
	41° 00.005' N 71° 03.276' W	
	41° 00.005' N 71° 03.276' W	
	41° 00.236' N 70° 49.586' W	
	41° 02.181' N 70° 49.639' W	
7	41° 02.181' N 70° 49.639' W	
	41° 03.379' N 70° 55.670' W	
	41° 01.950' N 71° 03.336' W	
	40° 57.413' N 71° 03.196' W	
8	40° 57.413' N 71° 03.196' W	
	41° 00.005' N 71° 03.276' W	
	40° 59.748' N 71° 16.963' W	
	40° 57.155' N 71° 16.874' W	
	40° 59.748' N 71° 16.963' W	
	41° 00.005' N 71° 03.276' W	
	41° 01.950' N 71° 03.336' W	
	41° 02.693' N 71° 15.756' W	
9	41° 01.950' N 71° 15.756' W	
	41° 01.095' N 71° 19.101' W	
	41° 03.763' N 71° 10.540' W	
	41° 03.881' N 71° 04.255' W	
10	41° 03.881' N 71° 04.255' W	
	41° 07.120' N 71° 04.356' W	
	41° 07.619' N 71° 15.664' W	
	41° 02.778' N 71° 19.171' W	

Ørsted Fisheries Outreach Team

John O'Keeffe

Head of Marine Affairs

Email: JOHNNO@orsted.com

Ross Pearsall

Fisheries Relations

Manager

Email: ROSPE@orsted.com

Julia Prince

CT/NY Fisheries Liaison

Phone: 857.348.3263

Email: JULPR@orsted.com

Kara Gross

Mid-Atlantic Fisheries Liaison

Phone: 857.330.7699

Email: KARGR@orsted.com

Mass Lobstermen's Association - Massachusetts

Commercial Fisheries Center of Rhode Island - Rhode Island

Paul Farnham - New York

Sid Holbrook - Connecticut

Erling Berg - New Jersey

Rodney Isaksen - New Jersey

Kenny Oche - New Jersey

Fisheries Representatives

Mass Lobstermen's Association - Massachusetts

Commercial Fisheries Center of Rhode Island - Rhode Island

Paul Farnham - New York

Sid Holbrook - Connecticut

Erling Berg - New Jersey

Rodney Isaksen - New Jersey

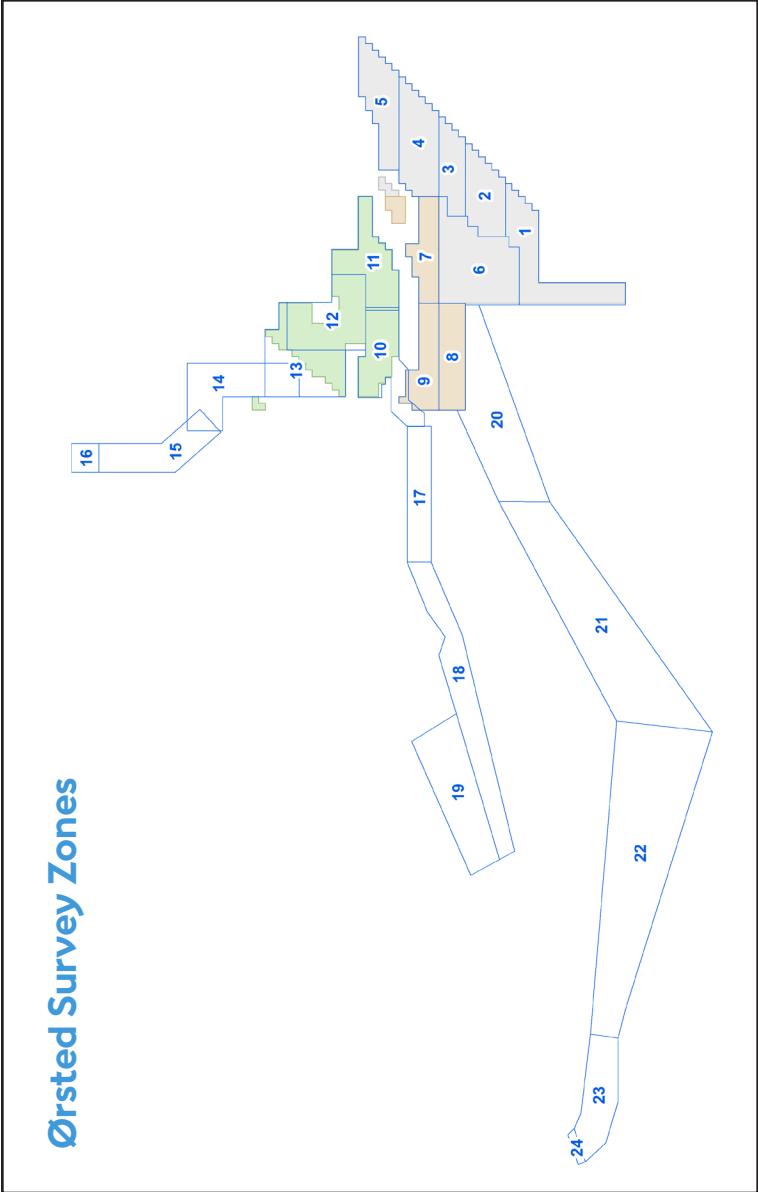
Kenny Oche - New Jersey

Contact Rodney Avila for local fisheries representatives' contact information.

Survey briefings are distributed to the fishing community and interested mariners on our website at us.orsted.com/mariners or via email upon request through Rodney Avila (RODAV@orsted.com).



Northeast Survey Activity (continued)



Survey Zone ID	Latitude	Longitude
11	41° 03.881' N	71° 04.255' W
	41° 07.120' N	71° 04.356' W
	41° 07.202' N	70° 59.770' W
	41° 10.489' N	70° 59.870' W
	41° 10.545' N	70° 56.609' W
	41° 08.079' N	70° 49.734' W
	41° 06.720' N	70° 49.697' W
	41° 07.202' N	70° 59.770' W
12	41° 10.489' N	70° 59.870' W
	41° 14.787' N	71° 03.595' W
	41° 14.674' N	71° 09.749' W
	41° 07.025' N	71° 09.497' W
	41° 08.968' N	71° 09.561' W
	41° 08.855' N	71° 15.563' W
	41° 16.687' N	71° 15.833' W
	41° 16.853' N	71° 07.134' W
13	41° 14.787' N	71° 03.595' W
	41° 14.674' N	71° 09.749' W
	41° 16.770' N	71° 11.536' W
	41° 16.687' N	71° 15.833' W
	41° 20.794' N	71° 15.975' W
	41° 20.706' N	71° 20.370' W
	41° 24.171' N	71° 19.165' W
	41° 24.316' N	71° 11.787' W

Survey Zone ID	Latitude	Longitude
15	41° 22.997' N	71° 17.696' W
	41° 20.706' N	71° 20.370' W
	41° 25.248' N	71° 25.952' W
	41° 26.609' N	71° 22.217' W
	41° 32.694' N	71° 22.439' W
	41° 32.615' N	71° 26.208' W
	41° 35.287' N	71° 26.308' W
	41° 35.366' N	71° 22.537' W
16	41° 32.694' N	71° 22.439' W
	41° 32.615' N	71° 26.208' W
	41° 02.778' N	71° 19.171' W
	41° 02.405' N	71° 36.593' W
17	41° 00.076' N	71° 36.501' W
	41° 00.449' N	71° 19.075' W
	41° 02.405' N	71° 36.593' W
	41° 00.076' N	71° 36.501' W
18	40° 51.018' N	72° 13.257' W
	40° 52.460' N	72° 14.388' W
	40° 55.188' N	72° 16.528' W
	40° 52.460' N	72° 14.388' W
19	40° 57.159' N	71° 55.873' W
	41° 01.399' N	71° 59.647' W
	40° 56.084' N	71° 03.368' W
	40° 48.684' N	71° 28.347' W
20	40° 53.673' N	71° 28.455' W
	40° 57.958' N	71° 16.902' W
	40° 53.673' N	71° 28.455' W
	40° 48.684' N	71° 28.347' W
21	40° 32.181' N	71° 57.124' W
	40° 41.521' N	71° 56.125' W
	40° 41.521' N	71° 56.125' W
	40° 32.181' N	71° 57.124' W
22	40° 40.244' N	72° 36.617' W
	40° 42.931' N	72° 36.235' W
	40° 42.931' N	72° 36.235' W
	40° 44.156' N	72° 48.402' W
23	40° 42.892' N	72° 52.584' W
	40° 40.005' N	72° 44.798' W
	40° 40.244' N	72° 36.617' W
	40° 44.156' N	72° 48.402' W
24	40° 44.724' N	72° 49.252' W
	40° 43.580' N	72° 52.966' W
	40° 42.892' N	72° 52.584' W
	40° 44.156' N	72° 48.402' W





Fugro Explorer

MV Fugro Explorer is used for geotechnical surveying

Flag: PA

LOA: 262 ft

Beam: 52 ft

Call Sign: 3FEV9

IMO: 9208564

Project: Sunrise Wind

Vessel Name	Site Function	Project	Outlook 06/17-06/20	Projected Outlook 06/21-06/23
Fugro Explorer	Geotechnical survey vessel	Sunrise Wind	Vessel conducting survey operations in Survey Zone 8 & 9	Vessel conducting survey operations in Survey Zone 6, 8, 9

*All Mariners transiting or fishing in the survey area are requested to give a wide berth to survey vessels as they may be limited in their ability to maneuver (VRAM) and towing gear out to 300 meters behind the vessel. Vessels in the vicinity of the survey vessels should operate in a manner that will not endanger the vessel or associated equipment

*At any time, vessels may seek shelter in a different zone due to weather

*Wx permitting / Survey operations will be conducted 24/7

Contact

For fisheries related inquiries:

Chris Sarro

RI/MA Fisheries Liaison

Phone: 857.276.1332

Email: CHSAR@orsted.com

Ross Pearsall

Fisheries Stakeholders Relations Manager

Phone: 857.278.2442

Email: ROSPE@orsted.com

Julia Prince

CT/NY Fisheries Liaison

Phone: 857.348.3263

Email: JULPR@orsted.com

Rodney Avila

Corporate Fisheries Liaison

Phone: 857.332.4479

Email: RODAV@orsted.com

