

# Northeast Survey Activity

## Mariners Briefing

Date of notice: September 14, 2020

Notice no. 135

### Overview

These briefings are intended to update mariners on marine operations for Ørsted survey activities. Survey operations are planned for locations throughout the lease areas (see chart) and are expected to last several months. These operations involve only the survey phase of the projects.

Mariners briefings are submitted on Mondays and Thursdays to the U.S. Coast Guard and distributed to the fishing community and interested mariners on our website at: [us.orssted.com/mariners](https://us.orssted.com/mariners) or via email upon request through Rodney Avila (RODAV@orssted.com).

**Vessels will designate a working channel on VHF 16 daily at 0600 and 1800 to communicate work plan for the next 12 hours**

### About the Wind Farms

Sunrise Wind, Revolution Wind, and South Fork Wind are 50-50 joint ventures between Ørsted and Eversource.

**Sunrise Wind:** a planned offshore wind farm located 30 miles east of Montauk Point.

Ongoing Sunrise Wind survey activities

- Projected Beginning: August 2019
- Projected End: Approximately December 2020

**Revolution Wind:** a planned offshore wind farm located 15 miles south of the Rhode Island coast.

Ongoing Revolution Wind survey activities

- Projected Beginning: May 2020
- Projected End: Approximately December 2020

**South Fork Wind:** a planned offshore wind farm located 35 miles east of Montauk Point.

Ongoing South Fork Wind survey activities

- Projected Beginning: April 2020
- Projected End: Approximately December 2020



## Geobay

MV Geobay is used for geotechnical surveying.

Flag: PA

LOA: 285 ft

Beam: 52 ft

Call Sign: 3ETG2

IMO: 7801556

**Project:** South Fork / Revolution Wind



## Provider

MV Provider is used as a scout vessel.

Flag: USA

LOA: 90 ft

Beam: 24 ft

Call Sign: WEY8494

**Project:** South Fork / Revolution Wind



## Kommandor Susan

MV Kommandor Susan is used for geotechnical surveying.

Flag: UK

LOA: 275 ft

Beam: 66 ft

Call Sign: MELY9

IMO: 9177844

**Project:** Revolution Wind



## Dolphin

RV Dolphin is used for geophysical surveying.

Flag: USA

LOA: 49 ft

Beam: 15 ft

Call Sign: WDL6143

MMSI: 338375213

**Project:** South Fork / Revolution Wind



## Deep Helder

MV Deep Helder is used for geophysical surveying.

Flag: NL

LOA: 201 ft

Beam: 51 ft

Call Sign: PBYU

IMO: 9690872

**Project:** South Fork / Revolution Wind



## Ocean Researcher

MV Researcher is used for geophysical surveying

Flag: UK

LOA: 226 ft

Beam: 46 ft

Call Sign: GDLS

IMO: 8207941

**Project:** Sunrise Wind



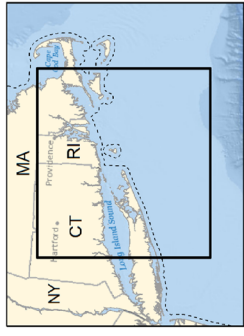
## Red Wing

Red Wing is used for nearshore surveying

LOA: 23 ft

Beam: 8 ft

**Project:** Revolution Wind / Sunrise Wind



# Orsted Survey Zones

1-24

3 Nautical Mile State Waters Boundary

Revolution and South Fork Wind Lease OCS-A 0486

Proposed South Fork Wind Export Cable

Potential Revolution Wind Export Cable Route Alternatives

Lease OCS-A 0500

Sunrise Wind Lease OCS-A 0487

Potential Sunrise Wind Export Cable Alternatives



Nautical Miles  
0 5 10

Kilometers  
0 10 20

Depth Soundings in Fathoms

Source: BOEM, NOAA Chart 12300 (2012)

Projection: NAD 1983 UTM Zone 19N (meters)

Date: 3/10/2020 Survey Zones



Massachusetts

Rhode Island

Connecticut

Brayton Point

Quonset

Nearshore Management Area 6

Hither Hills

Beach Lane

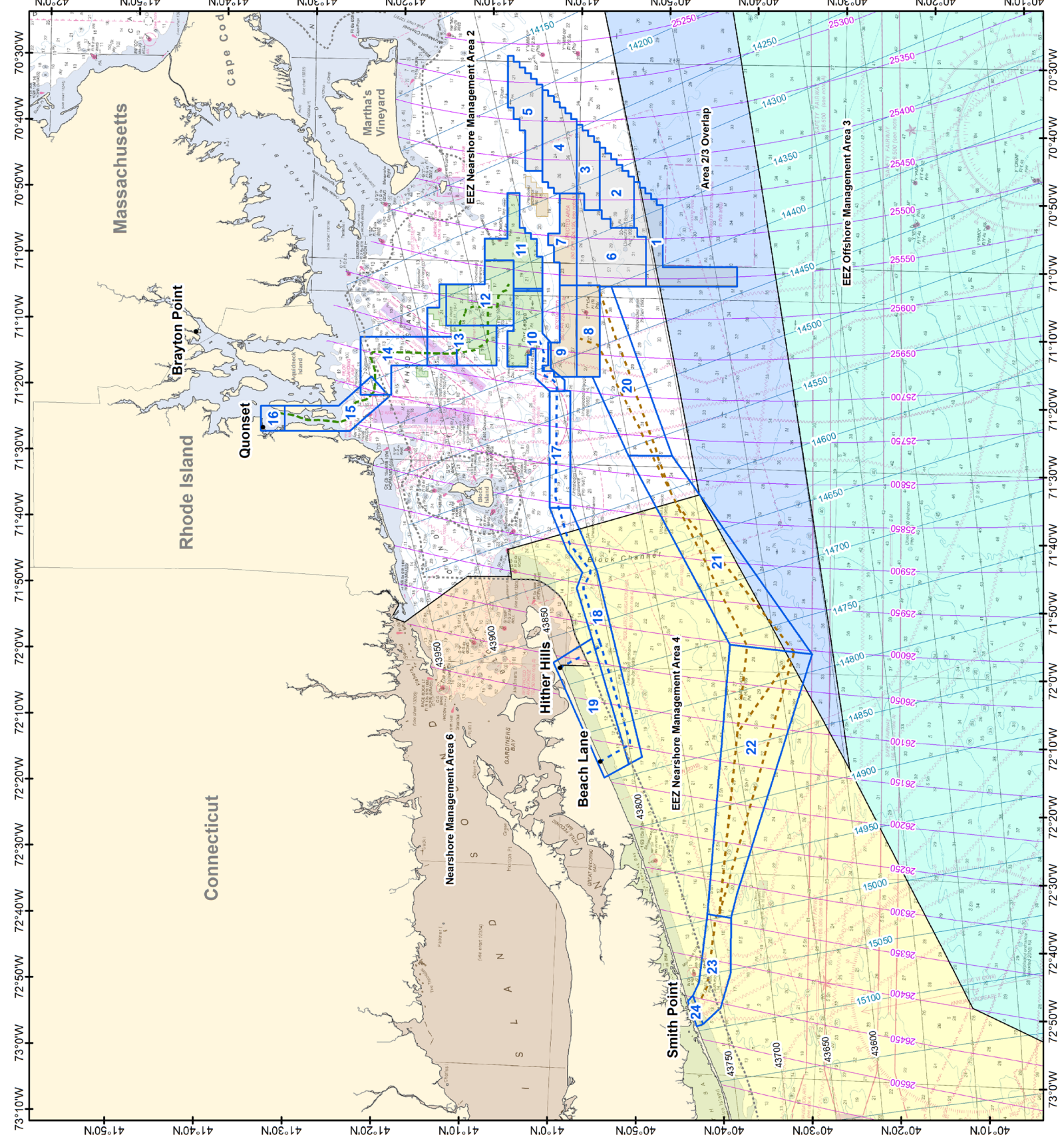
Smith Point

EEZ Nearshore Management Area 2

EEZ Nearshore Management Area 4

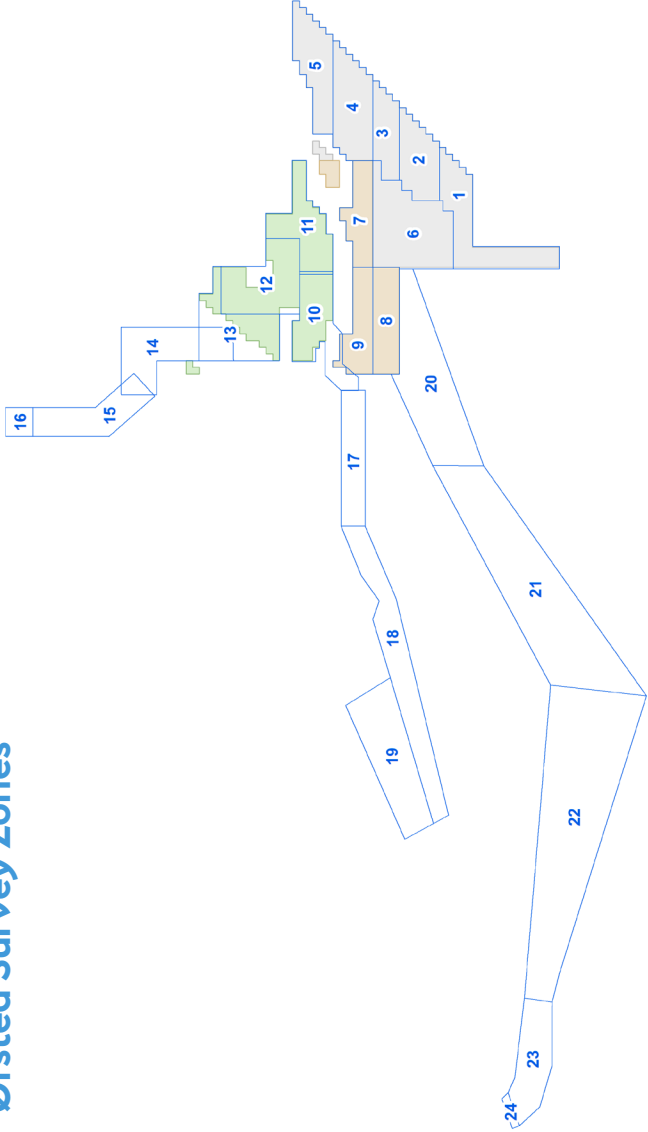
EEZ Offshore Management Area 3

Area 2/3 Overlap



# Northeast Survey Activity

## Ørsted Survey Zones



Survey Zone ID	Latitude	Longitude
6	40° 52.166' N 71° 03.247' W	40° 52.166' N 71° 03.247' W
	40° 41.852' N 71° 02.929' W	40° 53.671' N 70° 54.505' W
	40° 41.903' N 71° 00.019' W	40° 57.603' N 70° 51.978' W
	40° 50.330' N 71° 00.272' W	41° 00.236' N 70° 49.586' W
7	40° 50.485' N 70° 51.026' W	41° 00.005' N 71° 03.276' W
	40° 53.780' N 70° 47.698' W	41° 00.005' N 71° 03.276' W
	40° 53.671' N 70° 54.505' W	41° 00.236' N 70° 49.586' W
	40° 53.780' N 70° 47.698' W	41° 02.181' N 70° 49.639' W
8	40° 57.748' N 70° 42.673' W	41° 03.379' N 70° 55.670' W
	40° 57.603' N 70° 51.978' W	41° 01.950' N 71° 03.336' W
	40° 53.671' N 70° 54.505' W	40° 57.413' N 71° 03.196' W
	40° 57.603' N 70° 51.978' W	41° 00.005' N 71° 03.276' W
9	40° 57.748' N 70° 42.673' W	40° 59.748' N 71° 16.963' W
	41° 00.391' N 70° 39.310' W	40° 57.155' N 71° 16.874' W
	41° 00.236' N 70° 49.586' W	40° 59.748' N 71° 16.963' W
	41° 00.391' N 70° 39.310' W	41° 00.005' N 71° 03.276' W
10	41° 04.353' N 70° 34.274' W	41° 01.950' N 71° 03.336' W
	41° 04.179' N 70° 46.267' W	41° 02.693' N 71° 15.756' W
	41° 04.179' N 70° 46.267' W	41° 01.095' N 71° 19.101' W
	41° 04.179' N 70° 46.267' W	41° 03.763' N 71° 10.540' W

Survey Zone ID	Latitude	Longitude
1	40° 52.166' N 71° 03.247' W	40° 52.166' N 71° 03.247' W
	40° 41.852' N 71° 02.929' W	40° 53.671' N 70° 54.505' W
	40° 41.903' N 71° 00.019' W	40° 57.603' N 70° 51.978' W
	40° 50.330' N 71° 00.272' W	41° 00.236' N 70° 49.586' W
2	40° 50.485' N 70° 51.026' W	41° 00.005' N 71° 03.276' W
	40° 53.780' N 70° 47.698' W	41° 00.005' N 71° 03.276' W
	40° 53.671' N 70° 54.505' W	41° 00.236' N 70° 49.586' W
	40° 53.780' N 70° 47.698' W	41° 02.181' N 70° 49.639' W
3	40° 57.748' N 70° 42.673' W	41° 03.379' N 70° 55.670' W
	40° 57.603' N 70° 51.978' W	41° 01.950' N 71° 03.336' W
	40° 53.671' N 70° 54.505' W	40° 57.413' N 71° 03.196' W
	40° 57.603' N 70° 51.978' W	41° 00.005' N 71° 03.276' W
4	40° 57.748' N 70° 42.673' W	40° 59.748' N 71° 16.963' W
	41° 00.391' N 70° 39.310' W	40° 57.155' N 71° 16.874' W
	41° 00.236' N 70° 49.586' W	40° 59.748' N 71° 16.963' W
	41° 00.391' N 70° 39.310' W	41° 00.005' N 71° 03.276' W
5	41° 04.353' N 70° 34.274' W	41° 01.950' N 71° 03.336' W
	41° 04.179' N 70° 46.267' W	41° 02.693' N 71° 15.756' W
	41° 04.179' N 70° 46.267' W	41° 01.095' N 71° 19.101' W
	41° 04.179' N 70° 46.267' W	41° 03.763' N 71° 10.540' W

## Ørsted Fisheries Outreach Team

### John O'Keeffe

Head of Marine Affairs  
Email: JOHN.O@orsted.com

### Ed LeBlanc

Manager, Marine Affairs  
Email: EDWLE@orsted.com

### Elizabeth Kretovic

Mid-Atlantic Marine Affairs Manager  
Email: ELIKR@orsted.com

### Ross Pearsall

Fisheries Relations Manager  
Email: ROSPE@orsted.com

### Caitlin O'Mara

Marine Affairs Coordinator  
Email: CAIMA@orsted.com

### Rodney Avila

Corporate Fisheries Liaison  
Phone: 857.332.4479  
Email: RODAV@orsted.com

### Julia Prince

CT/NY Fisheries Liaison  
Phone: 857.348.3263  
Email: JULPR@orsted.com

### Kara Gross

Mid-Atlantic Fisheries Liaison  
Phone: 857.330.7699  
Email: KARGR@orsted.com

### Chris Sarro

RI/MA Fisheries Liaison  
Phone: 857.276.1332  
Email: CHSAR@orsted.com

## Fisheries Representatives

### Mass Lobstermen's Association - Massachusetts

Martha's Vineyard Fishermen Preservation Trust - Massachusetts

### New Bedford Port Authority - Massachusetts

Rodman Sykes - Rhode Island

Sid Holbrook - Connecticut

Erling Berg - New Jersey

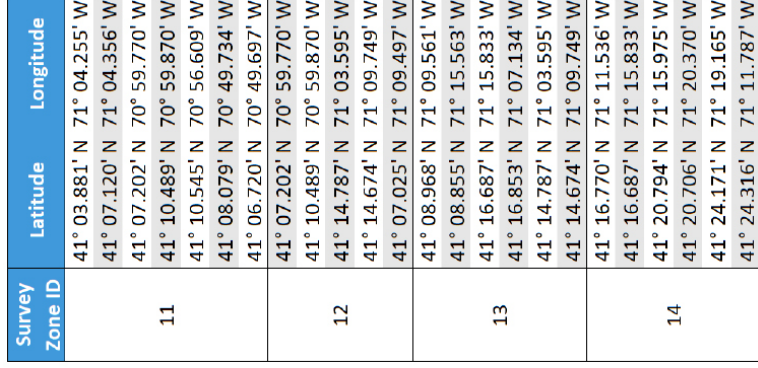
Rodney Isaksen - New Jersey

Julie Evans - New York

Survey briefings are distributed to the fishing community and interested mariners on our website at [us.orsted.com/mariners](http://us.orsted.com/mariners) or via email upon request through Rodney Avila (RODAV@orsted.com).



## Ørsted Survey Zones



Survey Zone ID	Latitude	Longitude
15	41° 22.997' N	71° 17.696' W
	41° 20.706' N	71° 20.370' W
	41° 25.248' N	71° 25.952' W
	41° 26.609' N	71° 22.217' W
	41° 32.694' N	71° 22.439' W
16	41° 32.615' N	71° 26.208' W
	41° 35.287' N	71° 26.308' W
	41° 35.366' N	71° 22.537' W
	41° 32.694' N	71° 22.439' W
	41° 32.615' N	71° 26.208' W
17	41° 02.778' N	71° 19.171' W
	41° 02.405' N	71° 36.593' W
	41° 00.076' N	71° 36.501' W
	41° 00.449' N	71° 19.075' W
	41° 02.405' N	71° 36.593' W
18	41° 00.076' N	71° 36.501' W
	40° 51.018' N	72° 13.257' W
	40° 52.460' N	72° 14.388' W
	40° 55.188' N	72° 16.528' W
	40° 52.460' N	72° 14.388' W
19	40° 52.460' N	72° 14.388' W
	40° 57.159' N	71° 55.873' W
	41° 01.399' N	71° 59.647' W
	40° 56.084' N	71° 03.368' W
	40° 48.684' N	71° 28.347' W
20	40° 53.673' N	71° 28.455' W
	40° 57.958' N	71° 16.902' W
	40° 53.673' N	71° 28.455' W
	40° 48.684' N	71° 28.347' W
	40° 32.181' N	71° 57.124' W
21	40° 41.521' N	71° 56.125' W
	40° 41.521' N	71° 56.125' W
	40° 32.181' N	71° 57.124' W
	40° 40.244' N	72° 36.617' W
	40° 42.931' N	72° 36.235' W
22	40° 42.931' N	72° 36.235' W
	40° 44.156' N	72° 48.402' W
	40° 42.892' N	72° 52.584' W
	40° 40.005' N	72° 44.798' W
	40° 40.244' N	72° 36.617' W
23	40° 44.156' N	72° 48.402' W
	40° 44.724' N	72° 49.252' W
	40° 43.580' N	72° 52.966' W
	40° 42.892' N	72° 52.584' W
	40° 42.892' N	72° 52.584' W

Vessel Name	Site Function	Project	Outlook 09/14-09/16	Projected Outlook 09/17-09/20
Ocean Researcher	Geophysical survey vessel	Sunrise Wind	Conducting survey activity in Survey Zone 6, 7, 8, 9	Conducting survey activity in Survey Zone 6, 7, 8, 9
Geobay	Geotechnical survey vessel	Revolution Wind / South Fork	Conducting survey activity in Survey Zone 11	Conducting survey activity in Survey Zone 11
Deep Helder	Geophysical survey vessel	Revolution Wind / South Fork	Conducting survey activity in Survey Zone 12	Conducting survey activity in Survey Zone 12
Provider	Scout vessel	Revolution Wind / South Fork	Conducting scout vessel activity in Survey Zone 12	Conducting scout vessel activity in Survey Zone 12
Dolphin	Geophysical survey vessel	Revolution Wind / South Fork	Conducting scout vessel activity in Survey Zone 19	Conducting scout vessel activity in Survey Zone 19
Red Wing	Nearshore survey activity	Revolution Wind	Conducting survey activity in Survey Zone 16	Conducting survey activity in Survey Zone 16
Kommandor Susan	Geotechnical survey vessel	Revolution Wind	Conducting survey vessel activity in Survey Zone 10, 12	Conducting survey vessel activity in Survey Zone 11

\*All Mariners transiting or fishing in the survey area are requested to give a wide berth to survey vessels as they may be limited in their ability to maneuver (VRAM) and towing gear out to 300 meters behind the vessel. Vessels in the vicinity of the survey vessels should operate in a manner that will not endanger the vessel or associated equipment

\*At any time, vessels may seek shelter in a different zone due to weather

\*Wx permitting / Survey operations will be conducted 24/7

## Contact

### For fisheries related inquiries:

#### Rodney Avila

##### Corporate Fisheries Liaison

Phone: 857.332.4479

Email: RODAV@orsted.com

#### Ross Pearsall

##### Fisheries Stakeholders Relations Manager

Phone: 857.278.2442

Email: ROSPE@orsted.com

#### Julia Prince

##### CT/NY Fisheries Liaison

Phone: 857.348.3263

Email: JULPR@orsted.com

#### Chris Sarro

##### RI/MA Fisheries Liaison

Phone: 857.276.1332

Email: CHSAR@orsted.com

