

Northeast Survey Activity

Mariners Briefing

Date of notice: August 10, 2020

Notice no. 125

Overview

These briefings are intended to update mariners on marine operations for Ørsted survey activities. Survey operations are planned for locations throughout the lease areas (see chart) and are expected to last several months. These operations involve only the survey phase of the projects.

Mariners briefings are submitted on Mondays and Thursdays to the U.S. Coast Guard and distributed to the fishing community and interested mariners on our website at: us.orssted.com/mariners or via email upon request through Rodney Avila (RODAV@orssted.com).

Vessels will designate a working channel on VHF 16 daily at 0600 and 1800 to communicate work plan for the next 12 hours

About the Wind Farms

Sunrise Wind, Revolution Wind, and South Fork Wind are 50-50 joint ventures between Ørsted and Eversource.

Sunrise Wind: a planned offshore wind farm located 30 miles east of Montauk Point.

Ongoing Sunrise Wind survey activities

- Projected Beginning: August 2019
- Projected End: Approximately December 2020

Revolution Wind: a planned offshore wind farm located 15 miles south of the Rhode Island coast.

Ongoing Revolution Wind survey activities

- Projected Beginning: May 2020
- Projected End: Approximately December 2020

South Fork Wind: a planned offshore wind farm located 35 miles east of Montauk Point.

Ongoing South Fork Wind survey activities

- Projected Beginning: April 2020
- Projected End: Approximately December 2020





Ocean Observer

MV Ocean Observer is used for geotechnical surveying.

Flag: UK

LOA: 264 ft

Beam: 47 ft

Call Sign: GHXX

IMO: 8511275

Project: Sunrise Wind



Searcher

MV Searcher is used for geophysical surveying.

Flag: PA

LOA: 215 ft

Beam: 47 ft

Call Sign: 3EUY6

IMO: 9504011

Project: Sunrise Wind



Ocean Researcher

MV Researcher is used for geophysical surveying

Flag: UK

LOA: 226 ft

Beam: 46 ft

Call Sign: GDLS

IMO: 8207941

Project: Sunrise Wind



NorthStar Challenger

MV NorthStar Challenger is used for benthic assessment surveying.

LOA: 96 ft

Beam: 26 ft

Project: Sunrise Wind



Dolphin

RV Dolphin is used for geophysical surveying.

Flag: USA

LOA: 49 ft

Beam: 15 ft

Call Sign: WDL6143

MMSI: 338375213

Project: South Fork / Revolution Wind



Geobay

MV Geobay is used for geotechnical surveying.

Flag: PA

LOA: 285 ft

Beam: 52 ft

Call Sign: 3ETG2

IMO: 7801556

Project: South Fork / Revolution Wind



Provider

MV Provider is used as a scout vessel.

Flag: USA

LOA: 90 ft

Beam: 24 ft

Call Sign: WEY8494

Project: South Fork / Revolution Wind



Deep Helder

MV Deep Helder is used for geophysical surveying.

Flag: NL

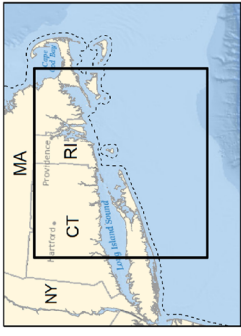
LOA: 201 ft

Beam: 51 ft

Call Sign: PBYU

IMO: 9690872

Project: South Fork / Revolution Wind



Orsted Survey Zones

1-24

3 Nautical Mile State Waters
Boundary

Revolution and South Fork Wind
Lease OCS-A 0486

Proposed South Fork Wind
Export Cable

Potential Revolution Wind
Export Cable Route
Alternatives

Lease OCS-A 0500

Sunrise Wind
Lease OCS-A 0487

Potential Sunrise Wind Export
Cable Alternatives



Nautical Miles
0 5 10

Kilometers
0 10 20

Depth Soundings in Fathoms

Source: BOEM, NOAA Chart 12300 (2012)

Projection: NAD 1983 UTM Zone 19N (meters)

Date: 3/10/2020 Survey Zones



Massachusetts

Rhode Island

Connecticut

Brayton Point

Quonset

Nearshore Management Area 6

Hither Hills

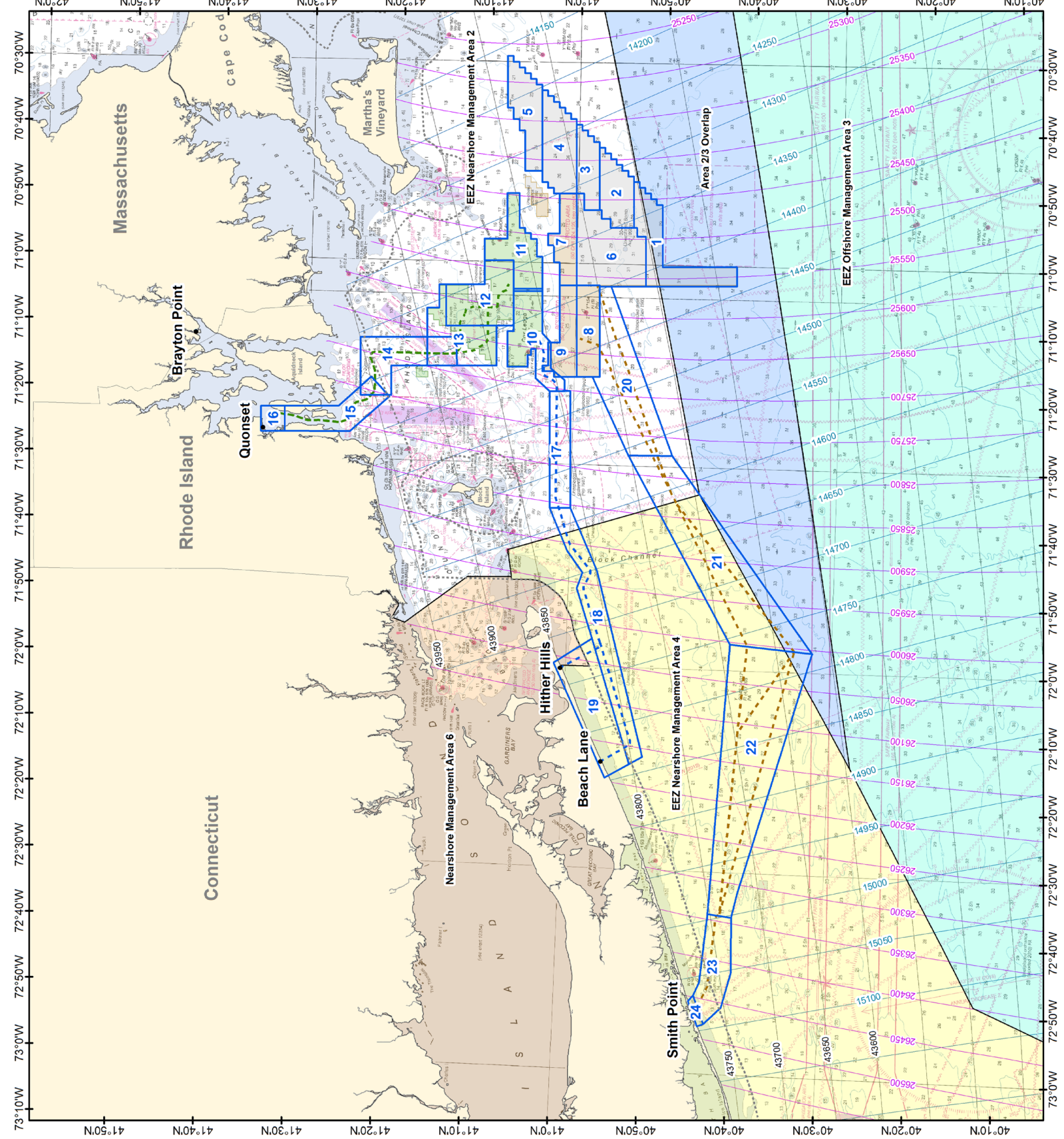
Beach Lane

Smith Point

EEZ Nearshore Management Area 2

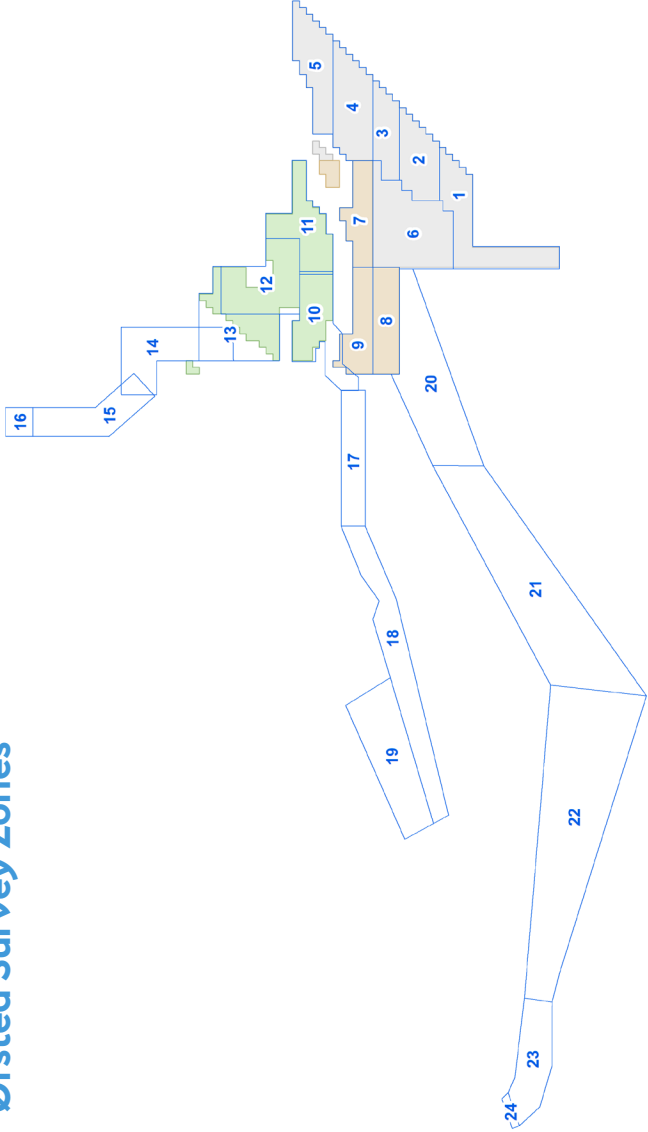
Area 2/3 Overlap

EEZ Offshore Management Area 3



Northeast Survey Activity

Ørsted Survey Zones



Survey Zone ID	Latitude	Longitude	Survey Zone ID	Latitude	Longitude
1	40° 52.166' N 71° 03.247' W	40° 52.166' N 71° 03.247' W	6	40° 52.166' N 71° 03.247' W	40° 52.166' N 71° 03.247' W
	40° 41.852' N 71° 02.929' W	40° 41.852' N 71° 02.929' W		40° 53.671' N 70° 54.505' W	40° 53.671' N 70° 54.505' W
	40° 41.903' N 71° 00.019' W	40° 41.903' N 71° 00.019' W		40° 57.603' N 70° 51.978' W	40° 57.603' N 70° 51.978' W
	40° 50.330' N 71° 00.272' W	40° 50.330' N 71° 00.272' W		41° 00.236' N 70° 49.586' W	41° 00.236' N 70° 49.586' W
2	40° 50.485' N 70° 51.026' W	40° 50.485' N 70° 51.026' W	7	41° 00.005' N 71° 03.276' W	41° 00.005' N 71° 03.276' W
	40° 53.780' N 70° 47.698' W	40° 53.780' N 70° 47.698' W		41° 00.236' N 70° 49.586' W	41° 00.236' N 70° 49.586' W
	40° 53.671' N 70° 54.505' W	40° 53.671' N 70° 54.505' W		41° 02.181' N 70° 49.639' W	41° 02.181' N 70° 49.639' W
	40° 53.780' N 70° 47.698' W	40° 53.780' N 70° 47.698' W		41° 03.379' N 70° 55.670' W	41° 03.379' N 70° 55.670' W
3	40° 57.748' N 70° 42.673' W	40° 57.748' N 70° 42.673' W	8	41° 01.950' N 71° 03.336' W	41° 01.950' N 71° 03.336' W
	40° 57.603' N 70° 51.978' W	40° 57.603' N 70° 51.978' W		40° 57.413' N 71° 03.196' W	40° 57.413' N 71° 03.196' W
	40° 57.603' N 70° 51.978' W	40° 57.603' N 70° 51.978' W		41° 00.005' N 71° 03.276' W	41° 00.005' N 71° 03.276' W
	40° 57.748' N 70° 42.673' W	40° 57.748' N 70° 42.673' W		40° 59.748' N 71° 16.963' W	40° 59.748' N 71° 16.963' W
4	41° 00.391' N 70° 39.310' W	41° 00.391' N 70° 39.310' W	9	40° 57.155' N 71° 16.874' W	40° 57.155' N 71° 16.874' W
	41° 00.236' N 70° 49.586' W	41° 00.236' N 70° 49.586' W		40° 59.748' N 71° 16.963' W	40° 59.748' N 71° 16.963' W
	41° 00.236' N 70° 49.586' W	41° 00.236' N 70° 49.586' W		41° 00.005' N 71° 03.276' W	41° 00.005' N 71° 03.276' W
	41° 00.391' N 70° 39.310' W	41° 00.391' N 70° 39.310' W		41° 01.950' N 71° 03.336' W	41° 01.950' N 71° 03.336' W
5	41° 04.353' N 70° 34.274' W	41° 04.353' N 70° 34.274' W	10	41° 02.693' N 71° 15.756' W	41° 02.693' N 71° 15.756' W
	41° 04.179' N 70° 46.267' W	41° 04.179' N 70° 46.267' W		41° 01.095' N 71° 19.101' W	41° 01.095' N 71° 19.101' W
	41° 04.179' N 70° 46.267' W	41° 04.179' N 70° 46.267' W		41° 03.763' N 71° 10.540' W	41° 03.763' N 71° 10.540' W
	41° 04.353' N 70° 34.274' W	41° 04.353' N 70° 34.274' W		41° 03.881' N 71° 04.255' W	41° 03.881' N 71° 04.255' W

Ørsted Fisheries Outreach Team

John O'Keeffe

Head of Marine Affairs
Email: JOHN.O@orsted.com

Ed LeBlanc

Manager, Marine Affairs
Email: EDWLE@orsted.com

Elizabeth Kretovic

Mid-Atlantic Marine Affairs Manager
Email: ELIKR@orsted.com

Ross Pearsall

Fisheries Relations Manager
Email: ROSPE@orsted.com

Caitlin O'Mara

Marine Affairs Coordinator
Email: CAIMA@orsted.com

Rodney Avila

Corporate Fisheries Liaison
Phone: 857.332.4479
Email: RODAV@orsted.com

Julia Prince

CT/NY Fisheries Liaison
Phone: 857.348.3263
Email: JULPR@orsted.com

Kara Gross

Mid-Atlantic Fisheries Liaison
Phone: 857.330.7699
Email: KARGR@orsted.com

Chris Sarro

RI/MA Fisheries Liaison
Phone: 857.276.1332
Email: CHSAR@orsted.com

Fisheries Representatives

Mass Lobstermen's Association - Massachusetts

Martha's Vineyard Fishermen Preservation Trust - Massachusetts

New Bedford Port Authority - Massachusetts

Rodman Sykes - Rhode Island

Sid Holbrook - Connecticut

Erling Berg - New Jersey

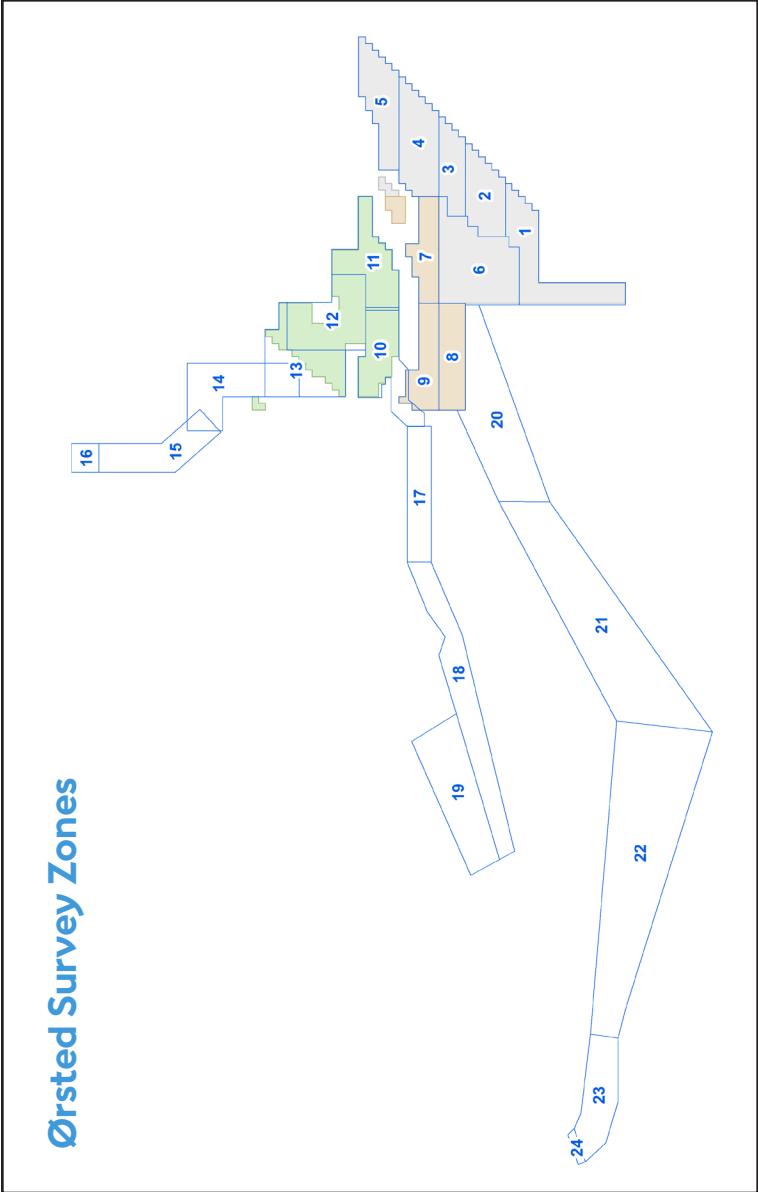
Rodney Isaksen - New Jersey

Julie Evans - New York

Survey briefings are distributed to the fishing community and interested mariners on our website at us.orsted.com/mariners or via email upon request through Rodney Avila (RODAV@orsted.com).



Northeast Survey Activity (continued)



Survey Zone ID	Latitude	Longitude
11	41° 03.881' N	71° 04.255' W
	41° 07.120' N	71° 04.356' W
	41° 07.202' N	70° 59.770' W
	41° 10.489' N	70° 59.870' W
	41° 10.545' N	70° 56.609' W
	41° 08.079' N	70° 49.734' W
	41° 06.720' N	70° 49.697' W
	41° 07.202' N	70° 59.770' W
12	41° 10.489' N	70° 59.870' W
	41° 14.787' N	71° 03.595' W
	41° 14.674' N	71° 09.749' W
	41° 07.025' N	71° 09.497' W
	41° 08.968' N	71° 09.561' W
	41° 08.855' N	71° 15.563' W
	41° 16.687' N	71° 15.833' W
	41° 16.853' N	71° 07.134' W
13	41° 14.787' N	71° 03.595' W
	41° 14.674' N	71° 09.749' W
	41° 16.770' N	71° 11.536' W
	41° 16.687' N	71° 15.833' W
	41° 20.794' N	71° 15.975' W
	41° 20.706' N	71° 20.370' W
	41° 24.171' N	71° 19.165' W
	41° 24.316' N	71° 11.787' W

Survey Zone ID	Latitude	Longitude
15	41° 22.997' N	71° 17.696' W
	41° 20.706' N	71° 20.370' W
	41° 25.248' N	71° 25.952' W
	41° 26.609' N	71° 22.217' W
	41° 32.694' N	71° 22.439' W
	41° 32.615' N	71° 26.208' W
	41° 35.287' N	71° 26.308' W
	41° 35.366' N	71° 22.537' W
16	41° 32.694' N	71° 22.439' W
	41° 32.615' N	71° 26.208' W
	41° 02.778' N	71° 19.171' W
	41° 02.405' N	71° 36.593' W
17	41° 00.076' N	71° 36.501' W
	41° 00.449' N	71° 19.075' W
	41° 02.405' N	71° 36.593' W
	41° 00.076' N	71° 36.501' W
18	40° 51.018' N	72° 13.257' W
	40° 52.460' N	72° 14.388' W
	40° 55.188' N	72° 16.528' W
	40° 52.460' N	72° 14.388' W
19	40° 57.159' N	71° 55.873' W
	41° 01.399' N	71° 59.647' W
	40° 56.084' N	71° 03.368' W
	40° 48.684' N	71° 28.347' W
20	40° 53.673' N	71° 28.455' W
	40° 57.958' N	71° 16.902' W
	40° 53.673' N	71° 28.455' W
	40° 48.684' N	71° 28.347' W
21	40° 32.181' N	71° 57.124' W
	40° 41.521' N	71° 56.125' W
	40° 41.521' N	71° 56.125' W
	40° 32.181' N	71° 57.124' W
22	40° 40.244' N	72° 36.617' W
	40° 42.931' N	72° 36.235' W
	40° 42.931' N	72° 36.235' W
	40° 44.156' N	72° 48.402' W
23	40° 42.892' N	72° 52.584' W
	40° 40.005' N	72° 44.798' W
	40° 40.244' N	72° 36.617' W
	40° 44.156' N	72° 48.402' W
24	40° 44.724' N	72° 49.252' W
	40° 43.580' N	72° 52.966' W
	40° 42.892' N	72° 52.584' W
	40° 44.156' N	72° 48.402' W



Vessel Name	Site Function	Project	Outlook 08/10-08/12	Projected Outlook 08/13-08/16
Searcher	Geophysical survey vessel	Sunrise Wind	Conducting survey activity in Survey Zone 20, 8	Conducting survey activity in Survey Zone 20, 21
Ocean Researcher	Geophysical survey vessel	Sunrise Wind	Conducting survey activity in Survey Zone 6, 7	Conducting survey activity in Survey Zone 6, 7
Ocean Observer	Geotechnical survey vessel	Sunrise Wind	Conducting survey activity in Survey Zone 23	Conducting survey activity in Survey Zone 23
Northstar Challenger	Benthic Assessment survey vessel	Sunrise Wind	Vessel not yet mobilized	Vessel not yet mobilized
Dolphin	Geophysical survey vessel	Revolution Wind / South Fork	Vessel not yet mobilized	Vessel not yet mobilized
Geobay	Geotechnical survey vessel	Revolution Wind / South Fork	Conducting survey activity in Survey Zone 13	Conducting survey activity in Survey Zone 13
Deep Helder	Geophysical survey vessel	Revolution Wind / South Fork	Conducting survey activity in Survey Zone 12	Conducting survey activity in Survey Zone 12
Provider	Scout vessel	Revolution Wind / South Fork	Conducting scout vessel activity in Survey Zone 12	Conducting scout vessel activity in Survey Zone 12

*All Mariners transiting or fishing in the survey area are requested to give a wide berth to survey vessels as they may be limited in their ability to maneuver (VRAM) and towing gear out to 300 meters behind the vessel. Vessels in the vicinity of the survey vessels should operate in a manner that will not endanger the vessel or associated equipment

*At any time, vessels may seek shelter in a different zone due to weather

*Wx permitting / Survey operations will be conducted 24/7

Contact

For fisheries related inquiries:

Rodney Avila

Corporate Fisheries Liaison

Phone: 857.332.4479

Email: RODAV@orsted.com

Ross Pearsall

Fisheries Stakeholders Relations Manager

Phone: 857.278.2442

Email: ROSPE@orsted.com

Julia Prince

CT/NY Fisheries Liaison

Phone: 857.348.3263

Email: JULPR@orsted.com

Chris Sarro

RI/MA Fisheries Liaison

Phone: 857.276.1332

Email: CHSAR@orsted.com

