

# Mid-Atlantic Survey Activity

## Mariners Briefing

Date of notice: July 27, 2020

Notice no. 061

### Overview

These briefings are intended to update mariners on marine operations for the Mid-Atlantic survey activities. Survey operations are planned for locations throughout the lease area (see chart) and are expected to last several months. These operations involve only the survey phase of the projects.

Mariners briefings are submitted as needed to the U.S. Coast Guard and distributed to the fishing community and interested mariners on our website at: [us.orsted.com/mariners](https://us.orsted.com/mariners) or via email upon request through Rodney Avila (RODAV@orsted.com).

**Vessels will designate a working channel on VHF 16 daily at 0600 and 1800**

### About the wind farms

**Ocean Wind (OCW)**, with the support of PSEG, is a planned offshore wind farm located 15 miles off the New Jersey coast. OCW will contain an offshore substation and a subsea transmission system able to deliver clean energy to the New Jersey electrical grid.

Ongoing OCW survey activities

- Projected Beginning: April 2019
- Projected End: September 2020

### Contact

**For fisheries related inquiries:**

**Rodney Avila**  
**Corporate Fisheries Liaison**  
Phone: 857.332.4479  
Email: RODAV@orsted.com

**Ross Pearsall**  
**Fisheries Stakeholders Relations Manager**  
Phone: 857.278.2442  
Email: ROSPE@orsted.com

**Kara Gross**  
**Mid-Atlantic Fisheries Liaison**  
Phone: 857.330.7699  
Email: KARGR@orsted.com



**Vision**  
LB Vision is used for geotechnical surveying.  
Flag: USA  
LOA: 70 ft  
Beam: 39 ft

Call Sign: WDF6746  
IMO: 8990976

**Project:** Ocean Wind



**Henry Hudson**  
RV Henry Hudson is used for the crew transfer vessel / on-site watch vessel for L/B Vision.  
Flag: USA  
LOA: 45 ft  
Beam: 15 ft

Call Sign: WDG4894  
MMSI: 367541190

**Project:** Ocean Wind



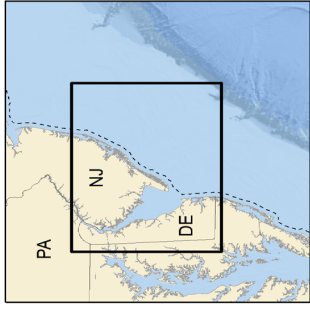
**Northstar Commander**  
MV Northstar Commander is used for geotechnical surveying.  
Flag: USA  
LOA: 240 ft  
Beam: 56 ft

Call Sign: WDJ9154  
IMO: 9132234

**Project:** Ocean Wind

Vessel name	Site function	Project	Activity	Projected outlook
Vision	Geotechnical survey vessel	Ocean Wind	Vessel will continue survey activities along Oyster Creek cable route	Vessel will continue survey activities along Oyster Creek cable route
Henry Hudson	Support vessel	Ocean Wind	Vessel will support LB Vision's survey activities along Oyster Creek cable route	Vessel will support LB Vision's survey activities along Oyster Creek cable route
Northstar Commander	Geotechnical survey vessel	Ocean Wind	Vessel will continue survey activities in lease area and along Oyster Creek cable route	Conducting survey activities in the lease area and Oyster Creek cable route

**\*\*All Mariners transiting or fishing in the survey area are requested to give a wide berth to survey vessels as they may be limited in their ability to maneuver (VRAM) and towing gear out to 300 meters behind the vessel. Vessels in the vicinity of the survey vessels should operate in a manner that will not endanger the vessel or associated equipment\*\***



3 Nautical Mile State Waters  
Boundary

BOEM Lease Areas

Lease OCS-A 0498

Proposed Ocean Wind Export  
Cable

Ocean Wind Area

Lease OCS-A 0519

Skipjack Area

Proposed Skipjack Wind Farm  
Export Cable



Nautical Miles  
0 5 10

Kilometers  
0 10 20



Depth Soundings in Fathoms

Source: BOEM, NOAA Chart 13003

Projection: NAD 1983 UTM Zone 18N (meters)

Date: 5/11/2020 MidAtlantic Overview North

