

Mid-Atlantic Survey Activity

Mariners Briefing

Date of notice: June 29, 2020

Notice no. 057

Overview

These briefings are intended to update mariners on marine operations for the Mid-Atlantic survey activities. Survey operations are planned for locations throughout the lease area (see chart) and are expected to last several months. These operations involve only the survey phase of the projects.

Mariners briefings are submitted as needed to the U.S. Coast Guard and distributed to the fishing community and interested mariners on our website at: us.orsted.com/mariners or via email upon request through Rodney Avila (RODAV@orsted.com).

Vessels will designate a working channel on VHF 16 daily at 0600 and 1800

About the wind farms

Ocean Wind (OCW), with the support of PSEG, is a planned offshore wind farm located 15 miles off the New Jersey coast. OCW will contain an offshore substation and a subsea transmission system able to deliver clean energy to the New Jersey electrical grid.

Ongoing OCW survey activities

- Projected Beginning: April 2019
- Projected End: August 2020

Contact

For fisheries related inquiries:

Rodney Avila
Corporate Fisheries Liaison
Phone: 857.332.4479
Email: RODAV@orsted.com

Ross Pearsall
Fisheries Stakeholders Relations Manager
Phone: 857.278.2442
Email: ROSPE@orsted.com

Kara Gross
Mid-Atlantic Fisheries Liaison
Phone: 857.330.7699
Email: KARGR@orsted.com



Vision
LB Vision is used for geotechnical surveying.
Flag: USA
LOA: 70 ft
Beam: 39 ft

Call Sign: WDF6746
IMO: 8990976
Project: Ocean Wind



Henry Hudson
RV Henry Hudson is used for the crew transfer vessel / on-site watch vessel for L/B Vision.
Flag: USA
LOA: 45 ft
Beam: 15 ft

Call Sign: WDG4894
MMSI: 367541190
Project: Ocean Wind



Explorer
MV Explorer is used for geotechnical surveying
Flag: PA
LOA: 261 ft
Beam: 52 ft

Call Sign: 3FEV9
MMSI: 357456000
Project: Ocean Wind



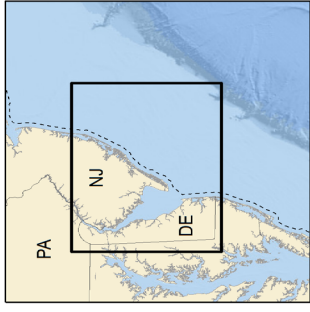
Northstar Commander
MV Northstar Commander is used for geotechnical surveying.
Flag: USA
LOA: 240 ft
Beam: 56 ft

Call Sign: WDJ9154
IMO: 9132234

Project: Ocean Wind

Vessel name	Site function	Project	Activity	Projected outlook
Vision	Geotechnical survey vessel	Ocean Wind	Vessel will conduct survey activities in nearshore waters off Ocean City	Vessel will conduct survey activities in nearshore waters off Ocean City
Henry Hudson	Support vessel	Ocean Wind	Vessel will support LB Vision's survey activities in nearshore waters off Ocean City	Vessel will support LB Vision's survey activities in nearshore waters off Ocean City
Explorer	Geotechnical survey vessel	Ocean Wind	Conducting survey activities in the lease area	Conducting survey activities in the lease area
Northstar Commander	Geotechnical survey vessel	Ocean Wind	Conducting survey activities in the lease area and Oyster Creek cable route	Conducting survey activities in the lease area and Oyster Creek cable route

****All Mariners transiting or fishing in the survey area are requested to give a wide berth to survey vessels as they may be limited in their ability to maneuver (VRAM) and towing gear out to 300 meters behind the vessel. Vessels in the vicinity of the survey vessels should operate in a manner that will not endanger the vessel or associated equipment****



3 Nautical Mile State Waters
Boundary

BOEM Lease Areas

Lease OCS-A 0498

Proposed Ocean Wind Export
Cable

Ocean Wind Area

Lease OCS-A 0519

Skipjack Area

Proposed Skipjack Wind Farm
Export Cable



0 5 10
Nautical Miles

0 10 20
Kilometers



Depth Soundings in Fathoms

Source: BOEM, NOAA Chart 13003

Projection: NAD 1983 UTM Zone 18N (meters)

Date: 5/11/2020 MidAtlantic Overview North

