



# Navigating in South Fork Wind (SFW)

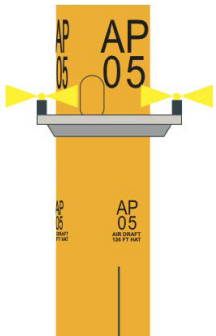


This summer, Ørsted and Eversource will install and construct the offshore components for South Fork Wind. Mariners can expect to see large construction vessels and many smaller support vessels in the lease area. There is no exclusion zone at the wind farm. Mariners can navigate and fish within the wind farm, except directly where construction vessels are operating.

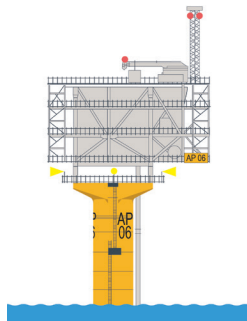
Starting in June, we anticipate the installation of 13 fixed-bottom foundations, which are about 70 feet tall, and the offshore electrical substation.

Temporary yellow lights mark these locations, each with a 5 NM range. Each location has a unique name, such as AP 05, seen here. Some will have AIS and fog horns. Key VHF Channel 83A five (5) times to activate the foghorn.

Starting in August, we will install the remaining sections - the wind turbine and its three blades. The finished towers will have lower intensity yellow lights, which will flash together.



⬆ Each location has a unique name like AP 05



⬆ Fixed-bottom foundations, which are about 70ft tall and the offshore electrical substation

Fully constructed towers will be 788 feet tall, have a blade clearance to the sea of 125 feet, and collectively power 70,000 homes. The wind turbines will be spaced in a uniform layout of 1 nautical mile by 1 nautical mile

## Frequently Asked Questions

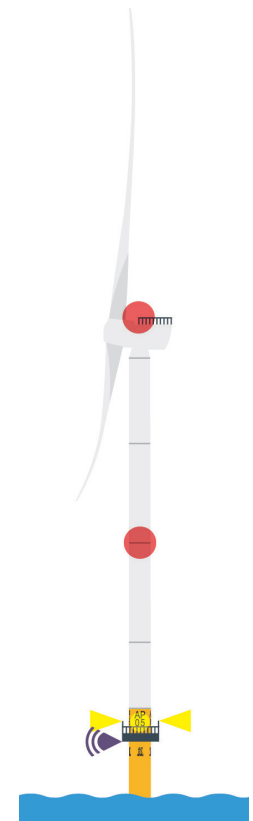
### Q: Is the wind farm closed to vessel traffic?

A. A wind farm is open for navigation and fishing, except where major construction vessels are working. Listen for USCG Safety Zone Broadcasts and monitor the VHF radio to stay aware of on-water activities. Marked safety vessels will be on scene.

### Q: What's HAT?

A.: Wind turbine blade clearances are measured to Highest Astronomical Tide, or HAT, to make sure the distance between the surface of the water and the blades is never less than indicated.

For questions and updated construction schedules, please visit [us.ored.com/mariners](http://us.ored.com/mariners)



⬆ Diagram of fully constructed offshore wind towers

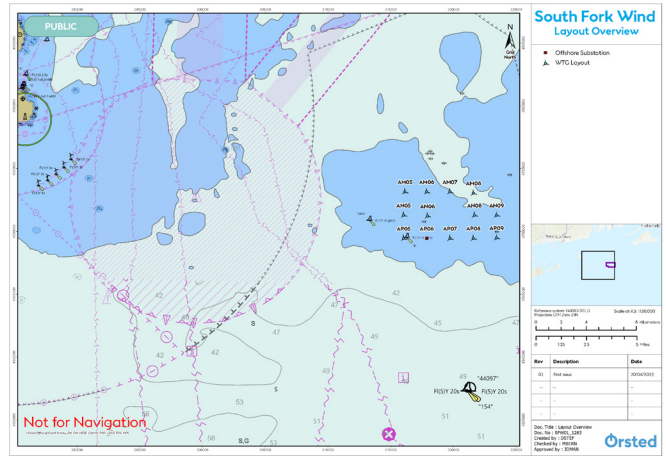


We follow the U.S. Coast Guard's rules for marine lighting and marking. NOAA charts will contain all relevant information.

The foundation locations should not be anchored on or moored to.

📍 Wind Turbine Locations

Name	Type	Latitude	Longitude
AM05	WTG	41.109 N	071.191 W
AM06	WTG	41.109 N	071.169 W
AM07	WTG	41.110 N	071.147 W
AM08	WTG	41.110 N	071.125 W
AN05	WTG	41.092 N	071.190 W
AN06	WTG	41.092 N	071.168 W
AN08	WTG	41.093 N	071.124 W
AN09	WTG	41.094 N	071.102 W
AP05	WTG	41.075 N	071.190 W
AP06	OSS	41.076 N	071.168 W



📍 South Fork Wind layout overview

**Ørsted Marine Affairs contacts:**

**For general questions, please reach out to** [MANEP@orsted.com](mailto:MANEP@orsted.com).

**New England Region:**

John Mansolillo: [JOMAN@orsted.com](mailto:JOMAN@orsted.com)

**CT/NY Region:**

Julia Prince: [JULPR@orsted.com](mailto:JULPR@orsted.com)

**RI/MA Region:**

Claire Hodson: [CLAHO@orsted.com](mailto:CLAHO@orsted.com)

**Commercial Fishing:**

Rodney Avila: [RODAV@orsted.com](mailto:RODAV@orsted.com)

**About Ørsted**

A global clean energy leader, Ørsted develops, constructs, and operates offshore and land-based wind farms, solar farms, energy storage facilities, and bioenergy plants. Ørsted is the only energy company in the world with a science-based net-zero emissions target as validated by the Science Based Targets initiative.

In the United States, the company has approximately 650 employees and a growing portfolio of clean

energy assets and partnerships that includes offshore wind energy, land-based wind energy, solar, storage technologies and e-fuels. A leader across the renewable energy sector in the United States, Ørsted holds the top position in offshore wind energy with approximately 5 gigawatts in development and operates America's first offshore wind farm, located off the coast of Block Island. Ørsted has a total U.S. land-based capacity of 5 gigawatts across wind, solar, storage technologies and e-fuels.