

# Notice to Mariners

## South Fork Wind Export Cable Landing

### Acoustic telemetry study examining fish behavior around offshore wind cables

Date of notice: September 9th, 2021

Notice no. 210

## About the Wind Farm

South Fork Wind is a 50-50 joint ventures between Ørsted and Eversource.

**South Fork Wind** is a planned offshore wind farm located 35 miles east of Montauk Point.

As part of the South Fork Wind (SFW) fisheries monitoring plan, SUNY Stony Brook, Cornell University Cooperative Extension and Monmouth University deployed an array of acoustic receivers around the SFW cable landing near Wainscott Beach. The study uses acoustic tags and receivers to help evaluate whether the electromagnetic fields (EMF) produced by the SFW export cable influences the migration or behavior of tagged fish. This project directly addresses concerns of stakeholders that EMF produced by the SFW export cable could affect commercially, recreationally and ecologically important species in the area.

The acoustic receivers in the study area are anchored to the seafloor with concrete moorings. To avoid entanglement with marine mammals and sea turtles, surface markers were not used to mark the receiver locations. These receivers will be left in place for the duration of the study, which intended to occur through 2025. Mariners are urged to use special caution when navigating in the vicinity of Wainscott Beach.

This information is also posted on our website [us.ored.com/mariners](https://us.ored.com/mariners). If you have any questions or concerns please contact Orsted's regional fisheries liaisons.

#### For fisheries related inquiries:

**Chris Sarro**  
**RI/MA Fisheries Liaison**  
Phone: 857.276.1332  
Email: CHSAR@ored.com

**Ross Pearsall**  
**Fisheries Stakeholders Relations Manager**  
Phone: 857.278.2442  
Email: ROSPE@ored.com

**Kara Gross**  
**Mid-Atlantic Fisheries Liaison**  
Phone: 857.330.7699  
Email: KARGR@ored.com

**Julia Prince**  
**CT/NY Fisheries Liaison**  
Phone: 857.348.3263  
Email: JULPR@ored.com

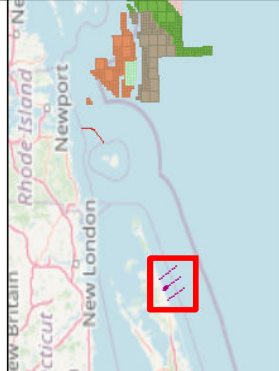
**Rodney Avila**  
**Corporate Fisheries Liaison**  
Phone: 857.332.4479  
Email: RODAV@ored.com



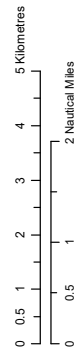
# South Fork Wind Cable Receivers

South Fork Export Cable Receivers

LORAN Lines (Inspire Environmental)



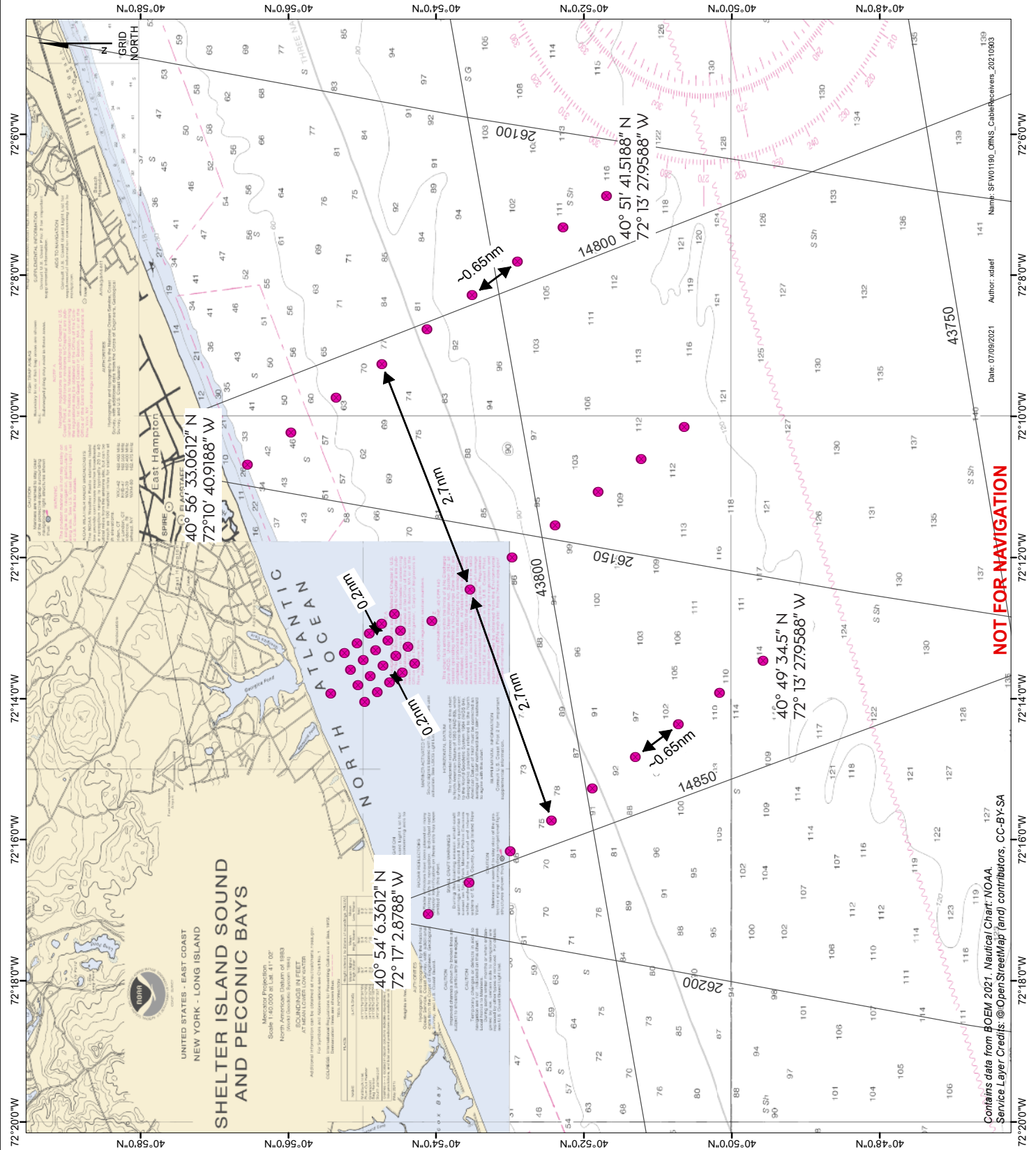
Reference system: WGS84 Scale@A4:1:130000



REV	REMARK	DATE
01	First Issue	08/09/2021
...	...	...
...	...	...
...	...	...

**Orsted**

Cable Receivers  
 Document no: SFW01180  
 Created by: AMJA  
 Checked by: MATJO  
 Approved by: CHSAR



Contains data from BOEM 2021, Nautical Chart: NOAA, Service Layer Credits: ©OpenStreetMap (and) contributors, CC-BY-SA

**NOT FOR NAVIGATION**

Date: 07/09/2021 Author: xtaef Name: SFW01180\_ORINS\_CableReceivers\_2021.0903