

# Notice to Mariners

## Block Island Wind Farm Activity

### HDPE Pullback Operation, Block Island Wind Farm Export Cable

Depending on Weather, it is expected that on January 6th 2021, Contractor JT Cleary will operate a pullback of the high density polyethylene (HDPE) pipe from Crescent Beach, Block Island to the offshore location of the Horizontal Directional Drilling (HDD) exit pit. This operation involves vessels pulling out a 3,500 ft long pipe from the beach to the offshore location. It is possible timing may vary depending on the weather and therefore this operation may occur after the 6th January, therefore all vessels should remain aware while in the area.

#### Communication:

VHF channels 13 and 16 will be monitored by JT Cleary at all times. JT Cleary's on-scene point of contact is Superintendent Tom McIntosh who can be reached 24/7 at 201-417-4115.

Mariners are requested to take extra precautions when navigating in the vicinity of these cable repair operations.

#### For more information, contact:

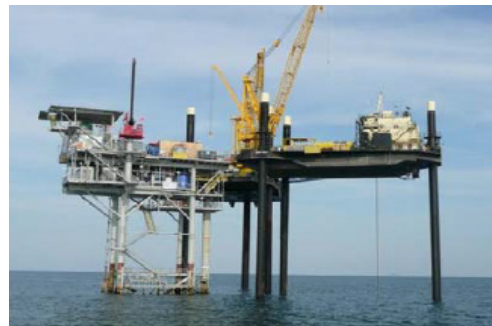
Caitlin O'Mara  
Marine Affairs Coordinator  
Phone: 857-332-4487  
Email: [caima@orsted.com](mailto:caima@orsted.com)

Mary Colbert  
Environment and Permitting Specialist  
Phone: 508-216-4158  
Email: [macol@orsted.com](mailto:macol@orsted.com)

#### Vessels Included:

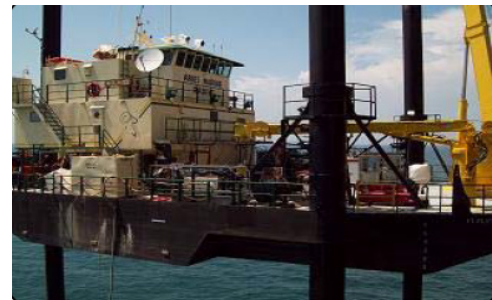
##### M/V Ram XV

Liftboat Class 175'  
Length Overall 113'  
Length (Barge Only) 98'  
Beam Overall 70'  
Beam (Barge Only) 40'  
Depth (Barge Only) 9'



##### M/V Ram VII

Liftboat Class 145'  
Length (Overall) 81' Open Deck Area 2,500 sq ft  
Beam (Overall) 63'  
Beam (Barge Only) 38'  
Depth (Barge Only) 8'



## Proposed Assist Vessels:



### Anthony Miller

LOA: 32 ft

Beam: 11 ft

Call Sign: WAV 5236

Registry Number: D985516



### Jacob Miller

LOA: 35 ft

Beam: 10 ft

Call Sign: WDD 2848

Registry Number: NY 6127FM



### Tommy Miller

LOA: 26 ft

Beam: 11 ft

Call Sign: WDD 2322

Official Number: NY8769FF



### Gaines Miller

LOA: 38 ft

Beam: 14 ft

Call Sign: WDI5495

Registry Number: 1174896



## Marguerite Miller

LOA: 28 ft

Beam: 10 ft

Call Sign: WCY 8888

Registry Number: NY 9504 GK



## Shawn Miller

LOA: 50 ft

Beam: 20 ft

Call Sign: WDD 2268

Official Number: 535080



## Barbara Miller

LOA: 57 ft

Beam: 15.5 ft

Call Sign: WDA 4712

Official Number: D1024685



## Berto Miller

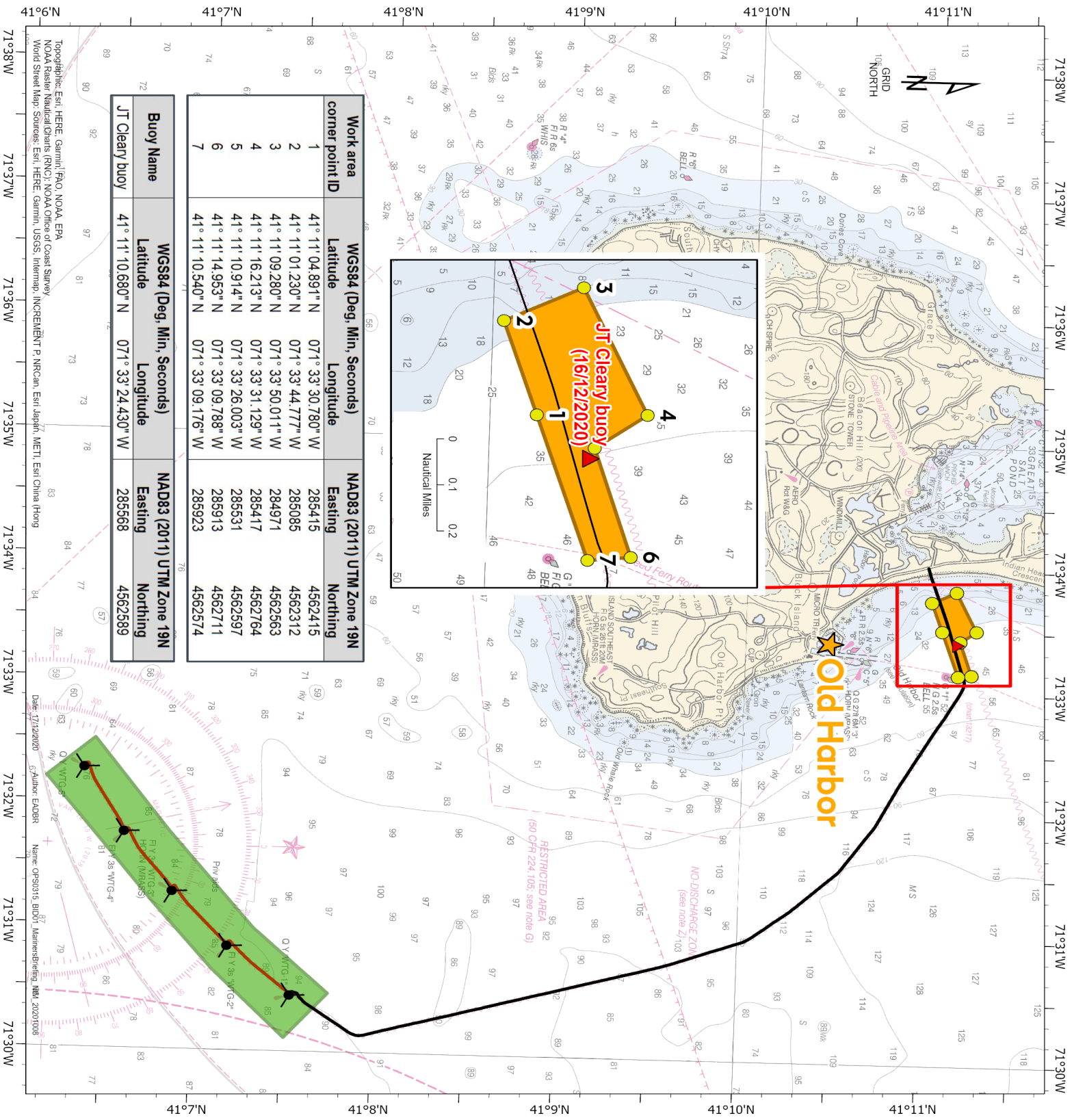
LOA: 152 ft

Beam: 44 ft

Call Sign: DA 4712

Official Number: D1024685





Work area		WG84 (Deg, Min, Seconds)		NAD83 (2011) UTM Zone 19N	
corner point ID		Latitude	Longitude	Easting	Northing
1		41° 11' 04.891" N	071° 33' 30.780" W	285415	4562415
2		41° 11' 01.230" N	071° 33' 44.777" W	285085	4562312
3		41° 11' 09.280" N	071° 33' 50.011" W	284971	4562563
4		41° 11' 16.213" N	071° 33' 31.129" W	285417	4562764
5		41° 11' 10.914" N	071° 33' 26.003" W	285531	4562597
6		41° 11' 14.953" N	071° 33' 09.788" W	285913	4562711
7		41° 11' 10.540" N	071° 33' 09.176" W	285923	4562574

Buoy Name		WG84 (Deg, Min, Seconds)		NAD83 (2011) UTM Zone 19N	
		Latitude	Longitude	Easting	Northing
JT Cleary buoy		41° 11' 10.680" N	071° 33' 24.430" W	285568	4562589

### Cable Repair Operations

Block Island Wind Farm  
Export Cable

- JT Cleary waterlander buoy
- Cable repair work area corner points
- Cable repair work area
- Block Island wind turbine generator (WTG)
- Block Island export cable
- Block Island array cable
- Block Island offshore wind farm
- Old Harbor

Coord System: NAD83 (2011)  
Projection: UTM Zone 19N  
Scale@A3: 1:55,000

0 500 1,000 1,500 2,000 Meters

0 0.25 0.5 0.75 1 Nautical Miles

Document No: OFS0315 B  
Created by: EADBR  
Checked by: WILLGI  
Approved by: CAIMA