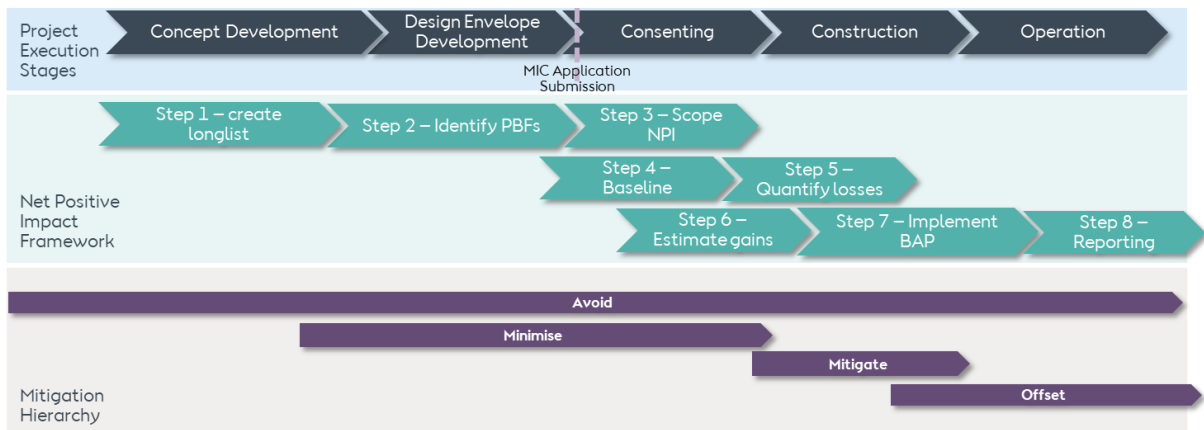


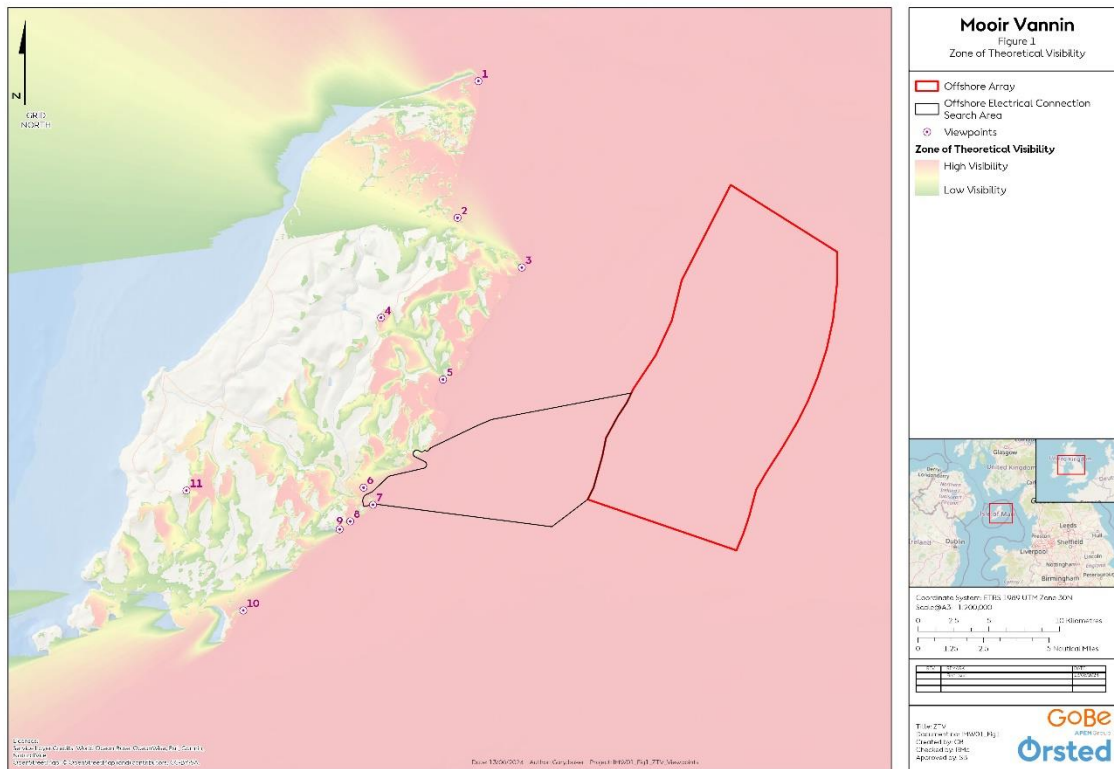
Next Steps: Surveys and Assessments

Biodiversity Strategy



- Ørsted have set a voluntary ambition for all projects commissioned from 2030 to deliver Net Position biodiversity Impact (NPI).
- Moor Vannin has set out the steps to achieve NPI for the Isle of Man in the Moor Vannin Biodiversity Strategy.
- The Biodiversity Strategy aims to identify a set of Priority Biodiversity Features (PBFs) on the Isle of Man, with subsequent surveys carried out to verify their presence and establish a baseline.
- A set of biodiversity initiatives, outlined in a Biodiversity Action Plan (BAP), will be applied to the residual impacts from the projects in order to deliver NPI.
- The Biodiversity Strategy has been shared with the Biodiversity Technical Advisory Group (TAG) to agree the steps to achieve NPI.
- The commitment to produce a BAP to achieve NPI will be submitted with the application for Marine Infrastructure Consent, with the biodiversity initiatives to be implemented in the post-consent phase (post-2026).

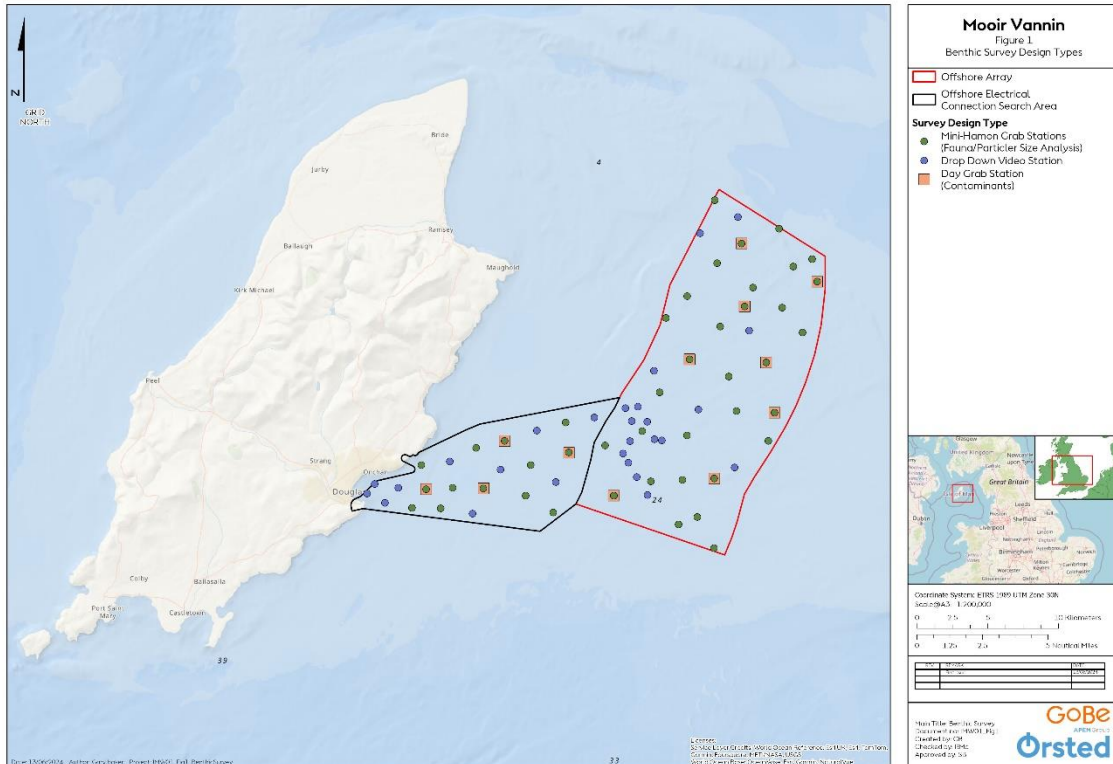
Seascape, Landscape and Visual Impact Assessment (SLVIA)



- The photos for the photomontages will be finalised. This means re-taking any that need to be clearer, taking photos from the new viewpoint 11), and taking night-time photos for any areas where night-time photomontages are needed.
- The assessment of potential impacts on seascape, landscape and visual receptors will be completed and presented to the Seascape, Landscape and Heritage Impact Technical Advisory Group.
- We will identify and plan any potential mitigation that may be required based upon our discussions with the TAG, feedback from the public consultation events, and our technical experience.
- Finally, we will seek to refine the design of the project for application based upon the identified appropriate mitigation.

This document is part of a suite of preliminary environmental materials prepared to fulfil pre-application consultation requirements under The Infrastructure Planning (Environmental Impact Assessment) Regulations 2017 (of Parliament) as applied to the Island by the Climate Change (Infrastructure Planning) (Environmental Impact Assessment) (Application) Order 2024.

Benthic



- The sediment samples and drop-down videos taken in the spring 2024 survey will be sent to a laboratory and specialist team for analysis and testing.
- This analysis will identify the characteristics of the sediment and any protected species or habitats. This information will be: included within the baseline characterisation of the area; fed into the modelling for marine processes; shared with the Department of Environment Food and Agriculture; and fed into our Route Planning and Site Selection of the cable and infrastructure.
- Once the baseline is updated, the impact assessment will be completed, and the outcomes shared with the Offshore Environment Technical Advisory Group (TAG).
- Based upon the assessment outcomes and feedback from the TAG we will plan appropriate mitigation for any predicted significant impacts.

Noise Baseline Surveys

To determine the baseline sound levels at the nearest Noise Sensitive Receptors (NSR) (such as residential houses and businesses), baseline sound measurements were undertaken to make sure that we can adequately assess the impacts from the noise generated during the construction of the Offshore Array and during landfall works at Groulle Bay and/ or Port Skillion.

This document is part of a suite of preliminary environmental materials prepared to fulfil pre-application consultation requirements under The Infrastructure Planning (Environmental Impact Assessment) Regulations 2017 (of Parliament) as applied to the Island by the Climate Change (Infrastructure Planning) (Environmental Impact Assessment) (Application) Order 2024.

Moor Vannin

Offshore Wind Farm

Two surveyors from SLR Consulting Ltd conducted baseline sound measurements at 12 locations along the east coast of the Isle of Man (as shown in the figure). The locations were previously agreed in consultation with DEFA.

The data were collected over the period of 20 – 24 May 2024 and surveys were completed during both day and night.

The data will now be processed and incorporated within the EIA to inform assessment and any monitoring or commitments.

