

Ørsted Community Newsletter

March
2019



Hornsea One and Two Offshore Wind Farms

Welcome to the latest community newsletter for Hornsea One and Two

Just over a year ago we began offshore construction on Hornsea One, and now, 120 km off the coast, the first of 174 turbines have been installed and are generating clean, renewable electricity. Following a series of local information events held along our onshore cable route, the onshore construction phase for Hornsea Two is now underway. We will continue to work to the highest standards already demonstrated by the teams involved, and together deliver the largest renewable energy projects in the UK.



Duncan Clark
Programme Director, Hornsea One and Two

About Ørsted

We are a renewable energy company with the **vision to create a world that runs entirely on green energy**. Climate change is one of the biggest challenges for life on earth; we need to transform the way we power the world.

We have invested significantly in the UK, where we now develop, construct and operate offshore wind farms and innovative biotechnology which generates energy from household waste without incineration.

Over the last decade, we have undergone a truly green transformation, halving our CO₂ emissions and focusing our activities on renewable sources of energy.

We want to revolutionise the way we provide power to people by developing market leading green energy solutions that benefit the planet and our customers alike.

Where are the Hornsea offshore wind farm projects?



- Hornsea One and Two
- Hornsea Three
- Proposed location of Hornsea Four
- Operational Ørsted offshore wind farms

Hornsea One is located 120 km from the Yorkshire coast and is under construction offshore. Hornsea Two is adjacent to Hornsea One and will be situated 89 km from the coast.

Hornsea Three is currently in its development and planning stage and will connect into the national grid in Norfolk. To find out more, please visit: www.hornseaproject3.co.uk

Recently, Hornsea Four entered the pre-application consultation phase and is due to submit a Development Consent Order (DCO) application over the next couple of years. For further information on the proposals, please visit: www.hornseaprojects.co.uk/Hornsea-Project-Four

Hornsea One offshore wind farm



Hornsea One has a capacity of 1.2 GW



It will provide enough power for well over 1 million homes



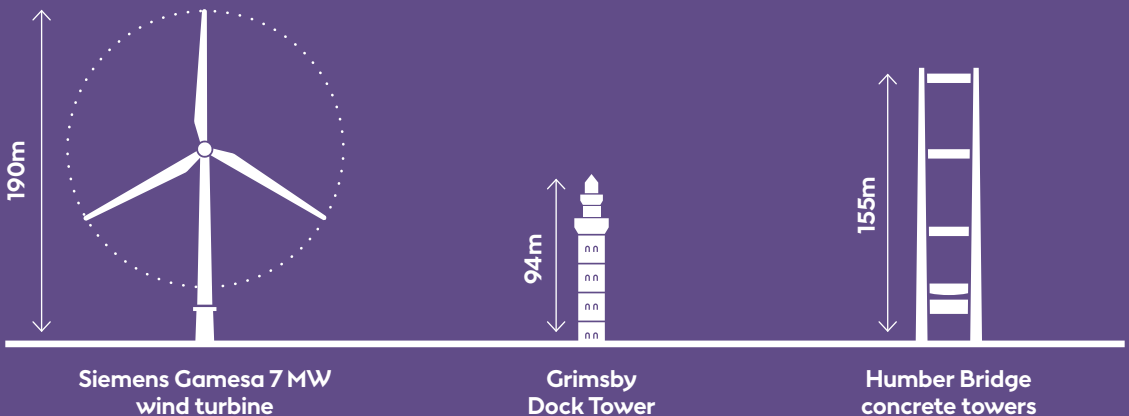
The wind farm is as far away from shore as Hull is from Hartlepool as the crow flies



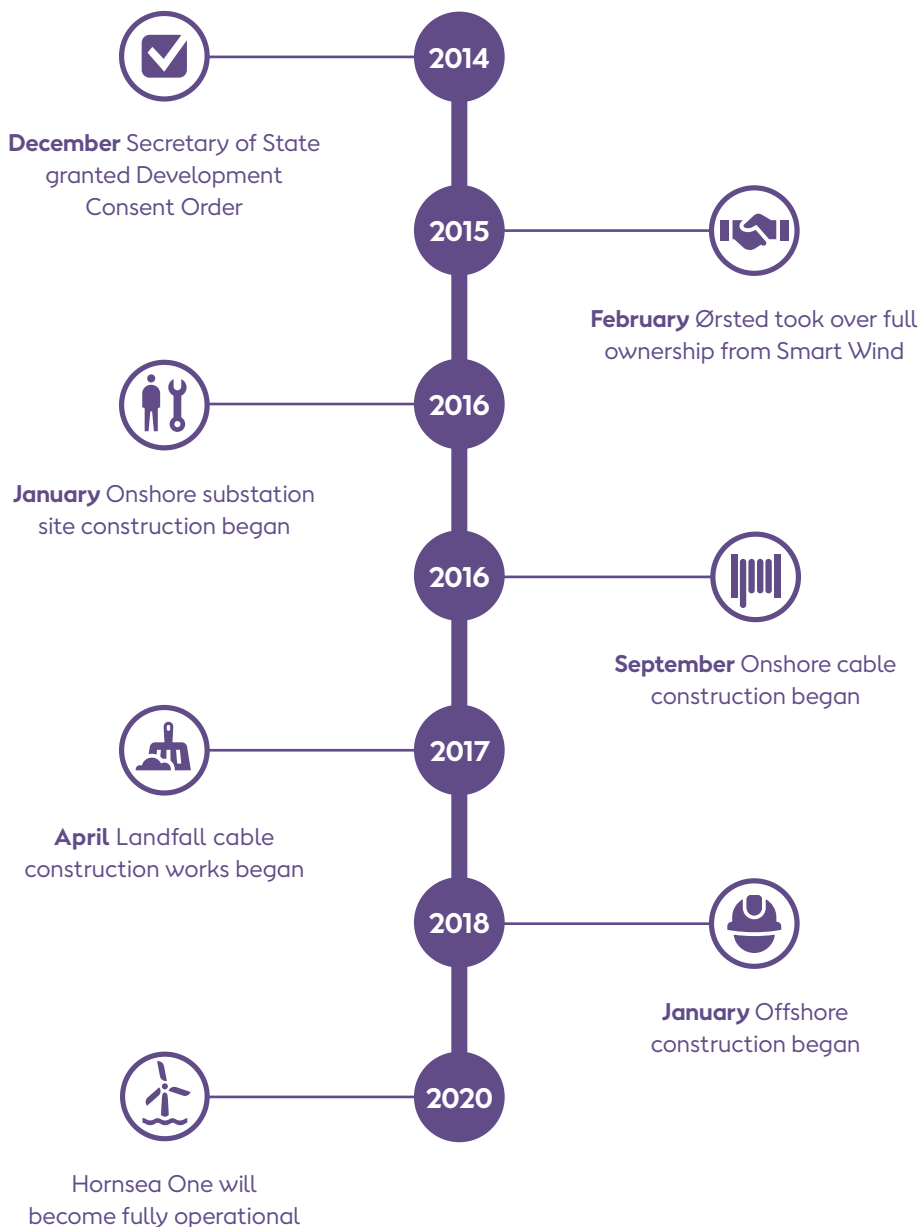
All onshore cables have been installed and reinstatement of the land is almost complete



172 foundations have been installed offshore



Hornsea One timeline



Latest news

A milestone has been reached on Hornsea One. The first turbine which left Hull on February 5 2019, was installed just five days later and is now producing electricity.

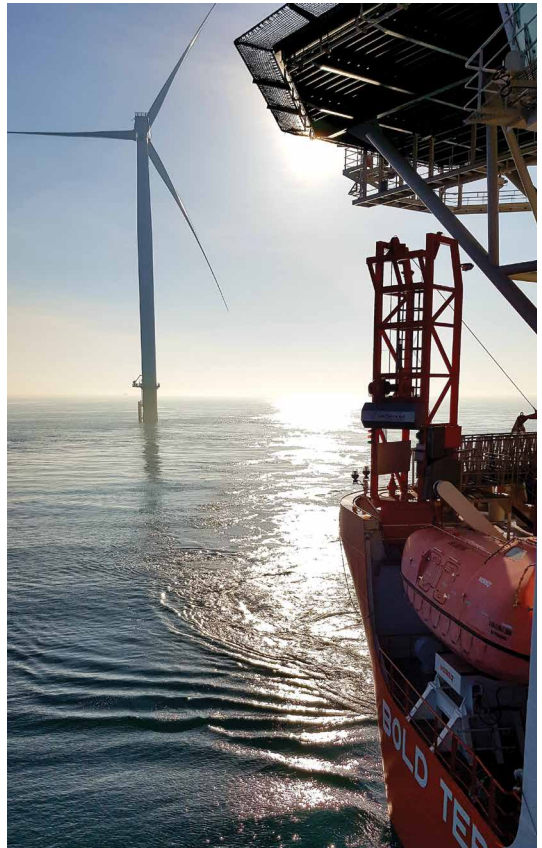
When fully operational, Hornsea One will be nearly double the size of the world's current largest offshore wind farm, Walney Extension, and will be capable of powering well over one million UK homes.

“Hornsea One is the first of a new generation of offshore wind farms that now rival the capacity of traditional fossil fuel power stations. The ability to generate clean electricity offshore at this scale is a globally significant milestone, at a time when urgent action needs to be taken to tackle climate change.

Ten years ago, the thought of a project of this size was just a dream, but thanks to continued innovation, a determined effort from both the industry and supply chain to drive down costs, and the natural geographical benefits that surround us, the UK has positioned itself as a world-leader in offshore wind.

Our company's vision is a world that runs entirely on green energy, and this flagship project is a significant step on that journey, proving that large-scale renewable energy is not just an idea of the future, it's here, right now.

Matthew Wright, UK Managing Director at Ørsted



Hornsea One operational turbine offshore

Photo credit to Tony Cato, Fred. Olsen Windcarrier

Hornsea One is located 120 km off the Yorkshire Coast and will consist of 174 Siemens Gamesa 7 MW turbines.

To date, 172 foundations have been installed offshore with turbine installation expected to continue until late summer 2019.

The electricity generated by the turbines will pass via undersea cables through one of three

large offshore substations and the world's first offshore reactive compensation station, all of which are fully installed, before reaching shore at Horseshoe Point, Lincolnshire.

The electricity will then be transported via underground cables to the onshore substation in North Killingholme, where it will connect to the UK national grid. Hornsea One is currently on schedule to become fully operational in 2020.



Hornsea One offshore substation
Photo credit to Bladt

Hornsea Two offshore wind farm



Hornsea Two has a capacity of 1.4 GW



It will provide enough power for well over 1.3 million homes



The wind farm will be located 89 km off the coast of Yorkshire



The onshore cable route will run in parallel to that of Hornsea One — between landfall at Horseshoe Point and the onshore substation in North Killingholme



Hornsea Two is due to be completed in 2022

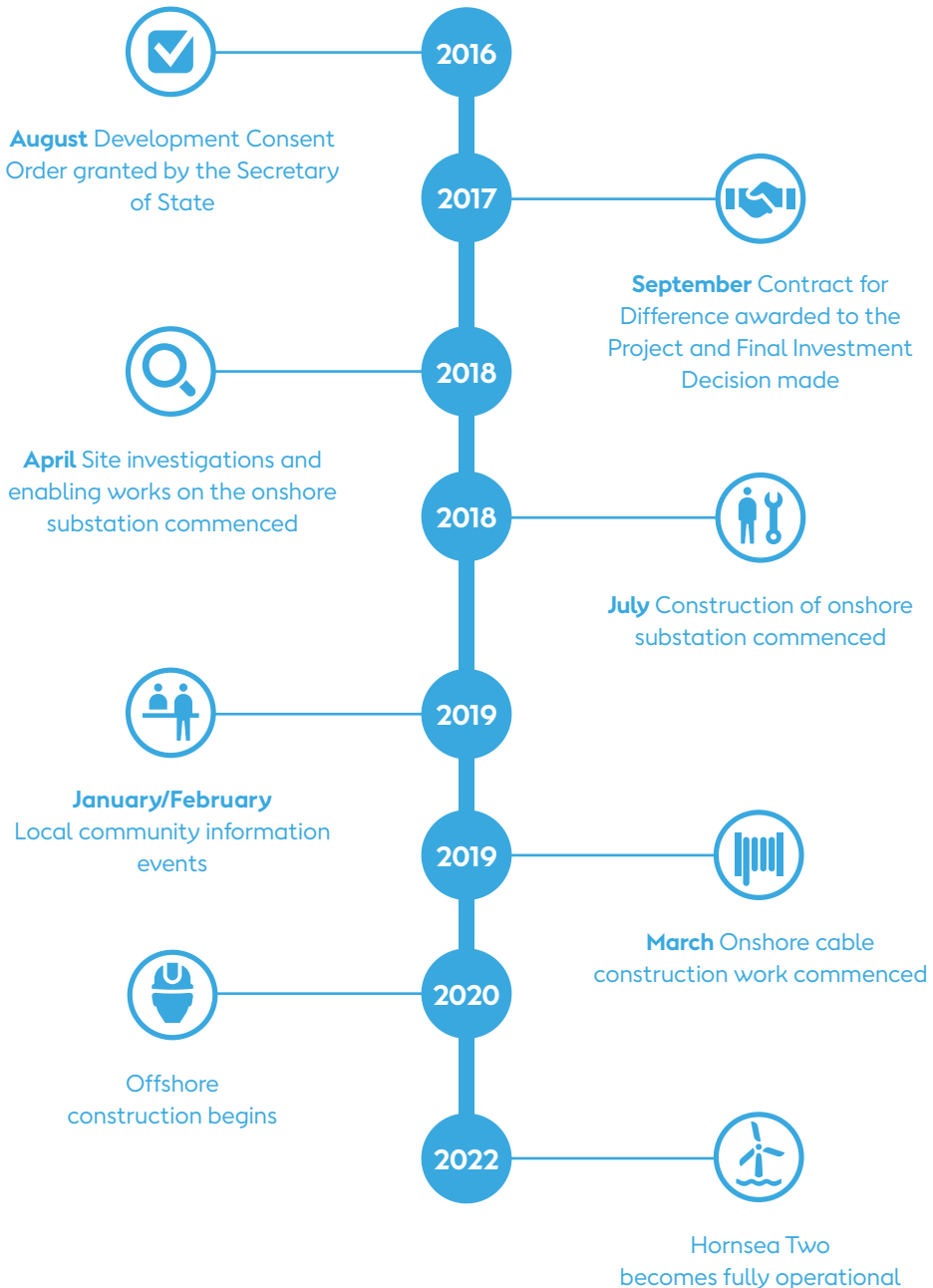


The onshore cables will be installed via ducts to speed up the cable laying process



Archaeological investigations along the cable route are ongoing

Hornsea Two timeline



Latest news

Onshore cable route events

We recently held three information events along our onshore cable route at venues in South Killingholme, Waltham and Tetney. Over 100 people from local communities attended the events to view plans for Hornsea Two's onshore cable works and to find out about environmental aspects of the project, methods of cable installation and traffic management.

Members of the project team from Ørsted and from our onshore cable installation contractors, VolkerInfra, were on hand at each event to explain more about the project, the onshore cable route and the programme of works.

“ We would like to thank all those who attended our community information events. At Ørsted we are committed to engaging with local communities.

We recognise the benefits of proactively and openly engaging to create positive relationships whilst we deliver what will become the world's largest offshore wind farm.

Imran Nawaz, Stakeholder Advisor, Hornsea Two



Information event, South Killingholme

Onshore works

Our onshore cable installation works for Hornsea Two are scheduled to commence in March 2019 following enabling works over the preceding months. Initially, work will be focused on the southern half of the route, with works and re-instatement expected to be completed in this section during 2019. From 2020 and beyond, works will be progressing north and will end at the onshore substation in North Killingholme where we will connect the project to the national grid in 2022.

Preparatory works have begun at landfall near Horseshoe Point. Here, the offshore cables will be pulled ashore to be connected to the onshore cables. The landfall bridge that was constructed during Hornsea One will be retained for Hornsea Two. This bridge will help to facilitate access to the intertidal area and will minimise impact on the sand dunes which are set in a Site of Special Scientific Interest (SSSI).



- Onshore substation
- Landfall
- Proposed main site compound
- Hornsea One cable route
- Hornsea Two cable route
- Railway line



East Coast Community Fund

The East Coast Community Fund is part of Ørsted's community engagement programme for our Race Bank and Hornsea offshore wind farms which are located off the Yorkshire, Lincolnshire and North Norfolk coast.

We have committed to a Community Fund worth £465,000 each year for the next 20 years. There are two funding rounds each year. To be eligible to apply for a grant your project must be both located and for the benefit of communities within the funding area. Grants from £1,000 up to £50,000 are available.

Applications for the latest round of funding closed on 23 January 2019 and decisions will be announced by mid-April 2019. The next round of funding is open to applications until 14 August 2019. For more information on the Fund and to check eligibility criteria, visit: www.grantscape.org.uk/fund/eastcoastcommunityfund

GrantScape is the national grant making charity that administers the Fund on our behalf.

You can contact GrantScape on 01908 247634 or via email at eccf@grantscape.org.uk.

East Coast Skills Fund

Up to £75,000 of Ørsted's annual £465,000 East Coast Community Fund is ring fenced for a Skills Fund to support projects relating to Science, Engineering, Technology and Maths (STEM). The overall aim of the Skills Fund is to provide educational and learning opportunities for people within the Fund's benefit area to help to improve their skills and employment opportunities.

In the last round of funding announced in October 2018, Franklin College in Grimsby was awarded £12,015 to allow students in its STEM academy to undertake paid internships, enabling them to gain vital work experience.

“ Franklin College is delighted to have been awarded money from the East Coast Community Fund provided by Ørsted. This money will allow us to support a number of our Year 12 students on summer internships within the STEM sector enabling them to explore the vast range of careers and develop key employability skills. This funding really will make a difference to our students and we are looking forward to working with local organisations in placing our students into quality internships that will allow them to experience working within the STEM sector first hand.

Emma Swinburn, Employer Engagement Manager at Franklin College

The next round of the Skills Fund will open to applications in March 2019. For further details on this and the main community fund, please visit the GrantScape website: www.grantscape.org.uk/fund/east-coast-community-skills-fund



Franklin College, Grimsby

“ Our community funds are designed to give back to the communities in which we operate, but we've ringfenced a part of that specifically to enable organisations to develop and deliver STEM-related training. As a predominantly engineering-based company, we recognise the importance of developing STEM skills, especially in the areas where we will be operating for a number of years.

Natasha Nanuck, Senior Stakeholder and Regulatory Advisor, Ørsted

Grimsby Renewables Partnership Conference

In early February, we were delighted to be a headline sponsor of the Grimsby Renewables Partnership Annual Conference and Exhibition.

The UK is home to the largest offshore wind farm and industry in the world. The Humber region plays a large role in the growth of the sector and Ørsted maintains a sizeable presence in the area.

Our East Coast Hub in the port of Grimsby will be the largest operations and maintenance

base for offshore wind in the UK. We have invested £14 million in this facility to date from where we support Westermost Rough, Lincs, Race Bank, Gunfleet Sands and the Hornsea projects.

At Ørsted we are committed to continued investment into the local areas in which we work and operate. We currently have over 300 employees at our East Coast Hub, and this number is expected to rise once Hornsea One and Two are commissioned.

Grimsby Renewables Partnership Conference



Community engagement methods

We have a range of engagement initiatives which allow you to follow the progress of the projects or to contact us with your questions. These include:



Local community events

We held events in January and February 2019 to explain more about the onshore works for Hornsea Two.



Local engagement

The project team meets with several parish councils to share plans and engage with the local community.



Website

orsted.co.uk



Twitter

[@OrstedUK](https://twitter.com/OrstedUK)



Freephone information line

0800 111 4478

The Freephone information line is open for calls between 9am and 5pm, Monday to Friday, with an answer phone facility to take messages outside these hours.



Community Liaison Officer

We have a dedicated community liaison officer, Dereth Morgan, who covers both projects in an onshore capacity. Dereth is the first point of contact for onshore enquiries from the local community.

You can contact Dereth by calling **07472 617 839**
or by emailing community@hornsea1and2.co.uk

Ørsted
5 Howick Place
London
SW1P 1WG

© Ørsted 2019. All rights reserved. No parts of this publication may be reproduced by any means without prior written permission from Ørsted.

All graphics in this document are for illustrative purposes. Dates are based on available information and are subject to change.



orsted.co.uk

Ørsted