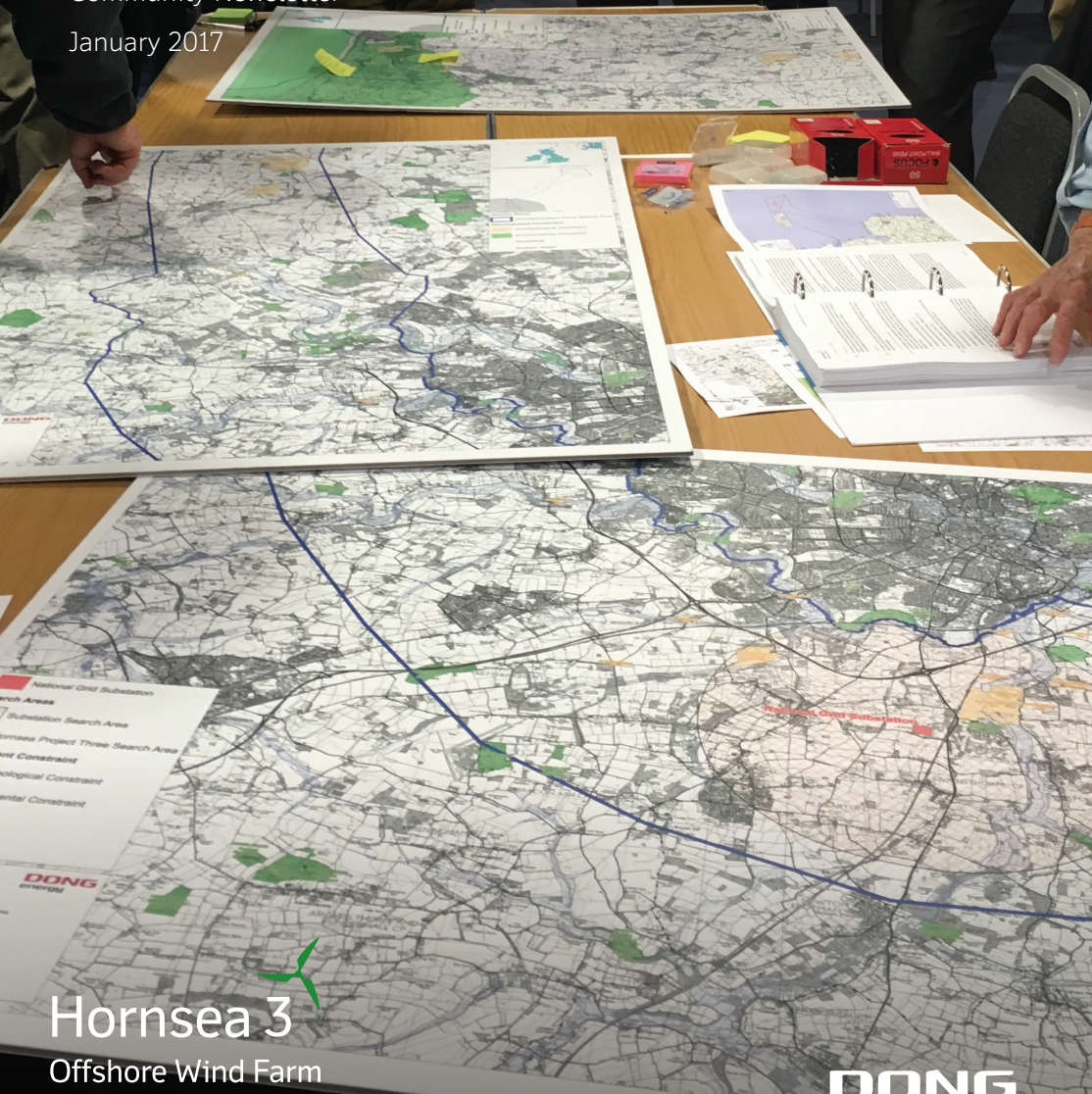


# HORNSEA PROJECT THREE

Offshore Wind Farm

Community Newsletter

January 2017



National Grid Substation Search Area  
Substation Search Area  
Hornsea Project Three Search Area  
Aviation Constraint  
Ecological Constraint  
Historical Constraint

**DONG**  
energy



## Hornsea 3

Offshore Wind Farm

[www.dongenergy.co.uk/hornseaproject3](http://www.dongenergy.co.uk/hornseaproject3)

**DONG**  
energy

THE NORFOLK DISTRICT

# Introduction

## Welcome to the second community newsletter for Hornsea Project Three, a new offshore wind farm DONG Energy is proposing to develop in the North Sea, over 120 km off the North Norfolk coast.

This newsletter contains the latest Project information, including an update on our recent activities and how you and your community can get involved in the consultation process.



If built out to full capacity (2.4 GW), Hornsea Project Three could be the world's largest offshore wind farm, capable of powering every home in Norfolk **5 times** over<sup>1</sup>.



Hornsea Project Three is currently investigating a Project area of 696 km<sup>2</sup>, which is over **17 times** the size of Norwich.

## Who is DONG Energy?

DONG Energy is the global leader in the development, construction and operation of offshore wind farms. The UK is our largest market and we currently have eight operational offshore wind farms and a further four under construction.

“We are in the earliest stages of developing our proposal. The feedback we receive at this stage is incredibly important and will help us to further refine our proposal. We understand that you will undoubtedly have lots of questions regarding our proposal and encourage you to get in touch to let us know your thoughts.”



Quote from Emily Woolfenden,  
Consultation Manager,  
Hornsea Project Three



<sup>1</sup> This figure assumes a load factor of 42% and a household consumption of 4.1MWh per year. Source: DECC (July 2015). This is based on 2011 census data.

# Community Engagement

In late October / early November 2016, we held our first round of community consultation events in six locations across Norfolk. These events were an opportunity for members of the public to come and hear more about our Project, ask any questions they may have and comment on our plans at that point in time.

During and after the events, we were able to capture a lot of useful information from people who know the area best, covering a range of topics including traffic management, planned developments, local wildlife and sensitive areas. Understanding what areas are most important for the local community is key, and the feedback gathered at these consultation events will help us to shape our proposal going forward.

## Community Feedback

All of the feedback we received at these events has now been compiled into a Consultation Summary Report, which is available on our website ([www.dongenergy.co.uk/hornseaproject3](http://www.dongenergy.co.uk/hornseaproject3)) and at your Community Access Point (CAP sites). Details of your nearest CAP site can also be found on our website. We will consider all of the comments received and, where possible, will try to incorporate these as the Project develops. At this stage, no final decisions have been made and there are plenty of opportunities for you to engage in this process over the next year.

We have prepared this Consultation Summary Report, to reflect our understanding of local concerns and how we propose to address them. However, we will also be preparing a more detailed Consultation Report as part of our DCO (Development Consent Order) application to be submitted in 2018, which will provide a full overview of the consultation process, including a summary of the responses received and any changes made to the Project as a result of this feedback.



## Upcoming Community Consultation Events

Based on the feedback we received at the first set of events and progress in the development of our proposal, we have decided to run an additional round of consultation events in early 2017. We will also be running Phase Two autumn 2017 events (see Consultation Timeline). We are aware that many of you are keen to understand how the Project might affect you, your land or your community. Also many of you told us that you would like to be kept informed of any developments, particularly concerning the proposed onshore cable route refinement.

We are currently in the process of refining the original 5 km onshore search area (see Consultation Zone map), following early consultation with both statutory bodies and local communities. We hope to present these plans in March 2017 at our public events, so that you and your community have the opportunity to comment on these plans at the earliest stage. These events are another opportunity for you to come and meet with us to discuss our proposal, and have your say.

These upcoming events will focus on communities living within or close to the refined cable corridor and the venues selected reflect this. Everyone is very welcome to attend. As with our last set of events, we will make all of the information available online should you not be able to attend in person. We will continue to consult with a range of stakeholders, including various local community groups, and will provide briefings to groups who would like to hear more about our plans. If you know of any particular groups that would be interested please let us know.

Thursday 2nd March 2017 <b>1:30pm – 5:30pm</b> <b>Reepham Town Hall</b> , Church Street, Reepham, Norwich, NR10 4JW
Friday 3rd March 2017 <b>3pm – 7pm</b> <b>Weybourne Village Hall</b> , Beach Lane, Weybourne, Holt, NR25 7AH
Monday 6th March 2017 <b>1pm – 5pm</b> <b>The King’s Centre</b> , King Street, Norwich, NR1 1PH
Tuesday 7th March 2017 <b>3pm – 7pm</b> <b>Hall for All</b> , Church Street, Weston Longville, Norwich, NR9 5JU
Wednesday 8th March 2017 <b>3pm – 7pm</b> <b>Corpusty and Saxthorpe Village Hall</b> , Heydon Road, Corpusty, NR11 6QQ
Thursday 9th March 2017 <b>4pm – 8pm</b> <b>Holt Community Centre</b> , Kerridge Way, Holt, NR25 6DN
Friday 10th March 2017 <b>2pm – 6pm</b> <b>Swardeston Social Club and Village Hall</b> , The Common, Swardeston Common, Norwich, NR14 8DX

More information regarding our plans for community consultation is available in our Statement of Community Consultation (SoCC). This document is available on our website and at our CAP sites.

## Consultation Timeline <sup>2</sup>

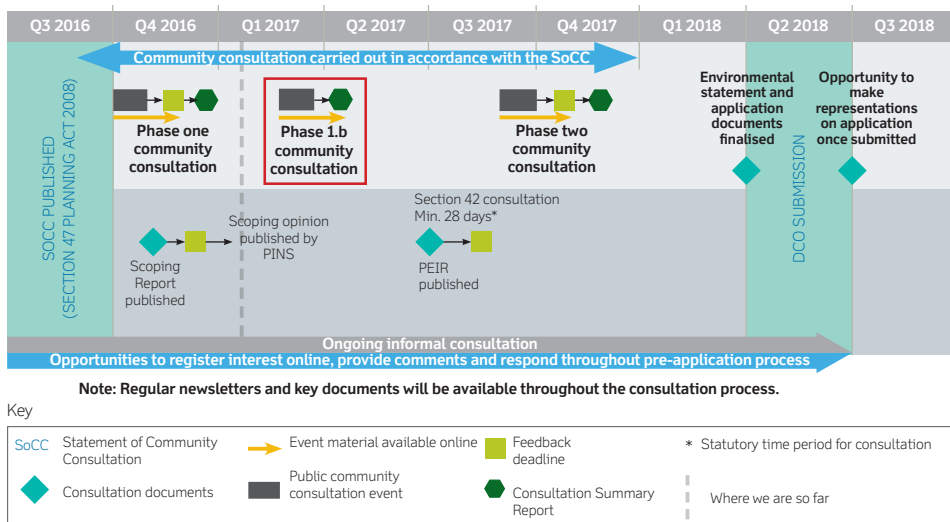


Figure 1: Diagram showing the consultation timeline in the lead up to submission of our DCO application.

<sup>2</sup>This diagram has been updated since it first featured in our Statement of Community Consultation (September 2016) and now includes the additional round of community consultation events (1.B) scheduled for early 2017.

# Environmental Impact Assessment

In parallel to this community consultation, we have recently published a Scoping Report as part of our Environmental Impact Assessment for Hornsea Project Three. This document includes desk-based research on the existing offshore and onshore environments within our search area. It also includes information on the Project parameters (e.g. maximum number of turbines), the proposed methods that will be used to further characterise the environment and details of how any potential impacts will be assessed.

This report was submitted to the Planning Inspectorate in October 2016, who coordinated responses from statutory bodies and have since formulated a Scoping Opinion. The Project team received this in early December 2016. We are currently reviewing all of the comments received and will meet with statutory bodies in the coming months to discuss their comments in more detail. This will enable us to make any necessary changes to our project before publishing our Preliminary Environmental Information Report later this year (Summer 2017).

## Where is Hornsea Project Three?



# Project Update

## Seabed Investigations

In October, our site investigation team completed the first set of seabed investigations at the Hornsea Project Three site (the area in which the turbines will be located). Our team are currently in the process of interpreting the data to understand the geology and the seabed features of the site.

## Landfall Investigations

We are undertaking some planned onshore geotechnical and geophysical investigations during the winter months (2016 / 2017) at potential cable landing areas, in order to determine the feasibility of these areas. The investigation will consist of a number of drilled boreholes with a small rig and surveying with hand held equipment.

## Consultation with Landowners

We are currently consulting with landowners and occupiers within an indicative revised search area. This is so we can learn of any other factors that we should be aware of when refining the corridor further, prior to the next set of public events. During the period leading up to the Development Consent Order (DCO) submission in 2018, the current indicative search area will be refined further to a final 80 m wide corridor for cable installation purposes.



## Environmental Surveys

Over the next 12 months, we will be undertaking Phase 2 environmental surveys within the refined onshore cable corridor as part of our route assessment work, looking at various species and habitat sites. The Project needs to get the necessary information on ecology, soils, landscape, archaeology, land use and drainage before the Project can decide where to site the substation / HVAC booster station / cable route. We would like to access land within the refined indicative search area to understand if there is anything of ecological and archaeological importance. Our Land Agents, Dalcour Maclaren, will be contacting landowners where survey access is needed in the near future to confirm details on timing. Where possible we will seek to combine surveys to reduce any disturbance to anyone's operations.

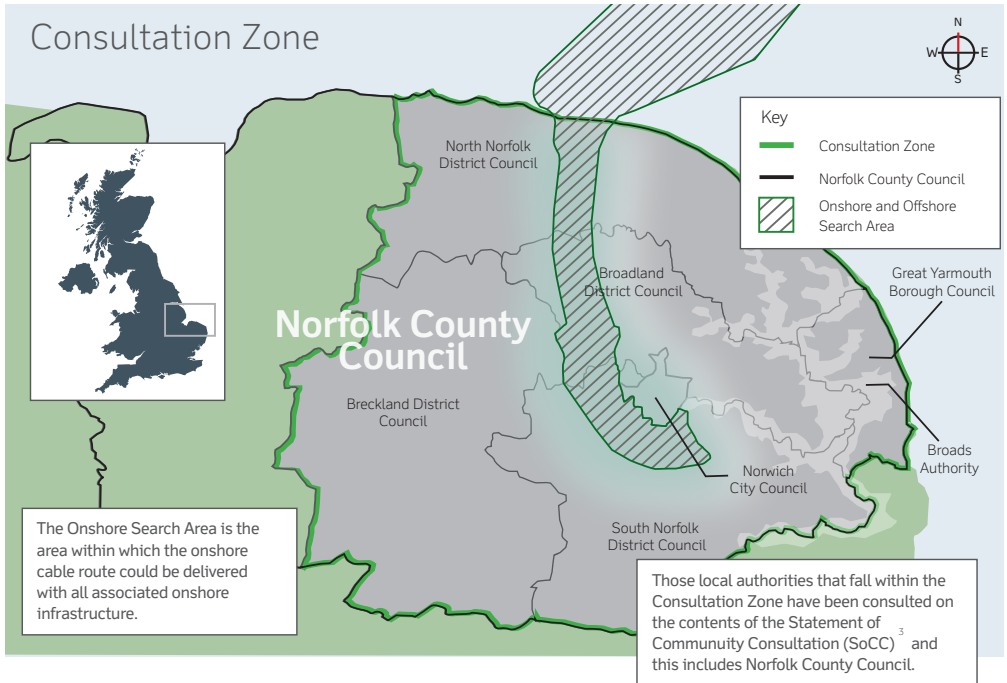
## Offshore Stakeholders

In addition to consultation already conducted along the onshore route, the Project team has also been in consultation with a number of stakeholders along the offshore export cable corridor. The cables which bring the electricity to shore from the offshore wind farm will be laid within this corridor. The consultation so far has included discussions with oil and gas developers regarding offshore platforms and pipelines in the immediate vicinity of the corridor. Other key environmental stakeholders, such as Trinity House and the Marine Management Organisation, have also been consulted for more technical matters related to the consent application. This consultation will continue over the coming months, as the export cable corridor and plans for the Project area are better defined.

# Keeping You Informed

We want to keep you informed throughout the consultation period, so that you understand how the Project is developing and how you can engage in the process. You can sign up to receive electronic or hardcopies of this newsletter by 'Registering Your Interest' in the Project via our website or by contacting us directly.

Alternatively, you can visit one of our Community Access Points (CAP sites), located across the Consultation Zone. These include council offices, parish councils, cafes and libraries.



## Find your nearest information point



You can find your nearest information point by entering your postcode into our interactive online map, now available on our dedicated website. If you do not have access to a computer, give us a call (details provided at the back of this document) and we can help you over the phone.

If you are unable to visit one of our CAP sites or your nearest council office, let us know and we can send electronic or hardcopies of the documents directly to you.

<sup>3</sup>SoCC - This document sets out how we propose to consult people living within the vicinity of the land on the proposed development.<sup>11</sup>

# What do you think?

We want to hear your thoughts on our proposal. There are a number of ways you can get in touch with us, both during the pre-application consultation period and beyond, to let us know your views.



**Attend one of our events.**



**Visit our website:**

[www.dongenergy.co.uk/hornseaproject3](http://www.dongenergy.co.uk/hornseaproject3)



**Send us an email:**

[contact@hornsea-project-three.co.uk](mailto:contact@hornsea-project-three.co.uk)



**Call our Freephone information line:**

0800 0288 466



**Send us a letter:**

Hornsea Project Three Offshore Wind Farm,  
c/o Emily Woolfenden,  
DONG Energy Power (UK) Ltd,  
5 Howick Place, Victoria,  
London, SW1P 1WG

All documents mentioned in this newsletter are available via our website, at one of our CAP Sites across Norfolk, or at one of the council offices listed below:

- **North Norfolk District Council** Council Offices, Holt Road, Cromer, Norfolk, NR27 9EN  
Monday, Tuesday and Thursday: 8:30am-5pm, Wednesday: 10am-5pm  
Friday: 8:30am-4:30pm
- **Broadland District Council** 1 Yarmouth Road, Thorpe St Andrew, Norwich, NR7 0DU  
Monday-Friday: 8:30am-5pm
- **South Norfolk District Council** South Norfolk House, Cygnet Court, Long Stratton, Norwich, NR15 2XE Monday-Friday: 8:15am-5pm
- **Broads Authority** Yare House, 62-64 Thorpe Road, Norwich, NR1 1RY  
Monday-Friday: 9am-5pm
- **Breckland District Council** Elizabeth House, Walpole Loke, Dereham, NR19 1EE  
Monday-Thursday: 8am-6pm
- **Great Yarmouth Borough Council** Town Hall, Hall Plain, Great Yarmouth, NR30 2QF  
Monday-Friday: 9am-5pm
- **Norwich City Council** City Hall, St Peters Street, Norwich, NR2 1NH  
Monday-Friday: 8am-5pm, Customer Centre: Monday, Tuesday, Thursday and Friday:  
8:45am-5pm, Wednesday: 1pm-5pm
- **Norfolk County Council** County Hall, Martineau Lane, Norwich, Norfolk, NR1 2DH  
Monday-Friday: 9am-5pm

Note: There will also be copies of the full DCO application available at some of the council offices listed above when this is submitted in 2018.

Should you require this document in large print, audio or Braille then please call **0800 111 4478**.

All graphics and maps in this document are for illustrative purposes only.  
Dates and figures are based on available information and are subject to change.

Printed on  
recycled paper

