

Hornsea Project Three  
Offshore Wind Farm



## Hornsea Project Three Offshore Wind Farm

Preliminary Environmental Information Report:  
Annex 2.3 – Surface Water Abstraction Licenses, Discharge Consents and Pollution Incidents

Date: July 2017

Hornsea 3  
Offshore Wind Farm

**DONG**  
energy

**Environmental Impact Assessment**

**Preliminary Environmental Information Report**

**Volume 6**

**Annex 2.3 – Surface Water Abstraction Licences, Discharge Consents and Pollution Incidents**

**Liability**

This report has been prepared by RPS, with all reasonable skill, care and diligence within the terms of their contract with DONG Energy Power (UK) Ltd.

Report Number: P6.6.2.3

Version: Final

Date: July 2017

This report is also downloadable from the Hornsea Project Three offshore wind farm website at:  
[www.dongenergy.co.uk/hornseaproject3](http://www.dongenergy.co.uk/hornseaproject3)

DONG Energy Power (UK) Ltd.

5 Howick Place,

London, SW1P 1WG

© DONG Energy Power (UK) Ltd, 2017. All rights reserved

Front cover picture: Kite surfer near one of DONG Energy's UK offshore wind farms © DONG Energy Hornsea Project Three (UK) Ltd., 2016.

Prepared by: RPS

Checked by: Jennifer Brack and Sarah Drijaca

Accepted by: Sophie Banham

Approved by: Sophie Banham

## Table of Contents

1. Introduction.....	1
1.1 Purpose.....	1

## List of Tables

Table 1.1: Incident categories.....	1
Table 1.2: Surface Water abstraction licences, discharge consents and pollution incidents.....	2

## List of Figures

Figure 1.1: Abstraction Licences, Drainage Consents and Pollution Incidents.....	4
--	---

## 1. Introduction

### 1.1 Purpose

- 1.1.1.1 This annex (Annex 2.3) sets out the surface water abstraction licences, discharge consents and pollution incidents within the hydrology and flood risk study area for Hornsea Three. The data has been used to inform the baseline and impact assessment of volume 3, chapter 2: Hydrology and Flood Risk. Abstraction licences are a good indication of how the surface watercourses in the hydrology and flood risk study area are utilised. Discharge consents may affect the baseline quality of the receiving surface water, whilst pollution incidents identify where the quality of watercourses within the hydrology and flood risk study area may have been affected by pollution.
- 1.1.1.2 Details of the licences, consents and incidents have been obtained from a commercial data supplier (Groundsure Limited) and local authorities (North Norfolk District Council, Broadland District Council and South Norfolk District Council) in December 2016. The information is regulated by the Environment Agency and local authorities.
- 1.1.1.3 It is noted that pollution incidents are classified by the Environment Agency into one of four categories using their Common Incident Classification Scheme (CICS) (Environment Agency). The different categories of pollution incidents are defined in Table 1.1 below. The abstraction licences, discharge consents and pollution incidents are set out in Table 1.2 below and shown on Figure 1.1 Sheets 1 to 7.

Table 1.1: Incident categories.

Category	Criteria
Category 1	Major, serious, persistent or extensive impact or effect on the environment, people and/or property.
Category 2	Significant impact of effect on the environment, people and/or property.
Category 3	Minor or minimal impact or effect on the environment, people and/or property.
Category 4	Substantiated incident with no impact.



Table 1.2: Surface Water abstraction licences, discharge consents and pollution incidents.

Reference	Licence Type	Easting	Northing	Licence Number	Operator	Abstraction Type	Source of Abstraction
<b>Abstraction Licences</b>							
1	Abstraction Licence	610760	330490	<b>AN/034/0006/007</b>	C J C Lee (Saxthorpe) Ltd	Spray Irrigation - Storage	River Bure at Little London, Norfolk
2	Abstraction Licence	613110	311470	<b>7/34/12/*S/0066</b>	Honingham Aktieselskab	Spray Irrigation - Direct	River Tud AT HONINGHAM & EASTON
3	Abstraction Licence	613110	311470	<b>AN/034/0012/002</b>	Honingham Aktieselskab	Spray Irrigation - Storage	River Tud at Hill Farm
4	Abstraction Licence	614030	308920	<b>7/34/13/*S/0136</b>	Great Melton Farms Ltd	Spray Irrigation - Direct	River Yare, Marlingford
5	Abstraction Licence	616560	304970	<b>7/34/13/*S/0259</b>	H W & H G Back	Spray Irrigation - Storage	River Yare, Ketteringham stream, Hethersett
6	Abstraction Licence	616540	304980	<b>7/34/13/*S/0259</b>	H W & H G Back	Spray Irrigation - Storage	River Yare, Tributary of the Ketteringham Stream, Hethersett
7	Abstraction Licence	622035	303426	<b>AN/034/0014/003</b>	Tarmac Aggregates Limited	Mineral Washing, Dust Suppression, Process Water	Borehole/groundwater
Reference	Licence Type	Easting	Northing	EA Reference	Operator	Effluent Type	Receiving Environment
<b>Discharge Consents</b>							
8	Discharge Consent	610930	343460	<b>AEENF12379</b>	Sewerage Network - Pumping Station - water company	Final/treated effluent; Sewage Discharge – Storm Overflow / Storm Tank- Water Company; Sewage discharges - Pumping Station - water Company	Pond draining to Shingle Ridge
9	Discharge Consent	615136	306806	<b>PRENF16229</b>	Domestic Property (Single)	Final/treated effluent	Tributary of the River Yare
10	Discharge Consent	613610	309130	<b>PRENF20419</b>	Domestic Property (Single)	Final/treated effluent	River Yare
11	Discharge Consent	611479	335816	<b>NPSWQD007307</b>	Domestic Property (Multiple)	Final/treated effluent	Unnamed Drain
12	Discharge Consent	615360	306390	<b>PRENF15395</b>	Sewage disposal works - other	Final/treated effluent	Tributary of the River Yare
13	Discharge Consent	613150	309150	<b>PRENF14104</b>	Public Houses and Bars	Unspecified	Tributary of the River Yare
14	Discharge Consent	613692	309148	<b>PR4NF1023X</b>	Domestic Property (Single)	Final/treated effluent	River Yare
15	Discharge Consent	613110	309285	<b>PRENF21048</b>	Sewage disposal works - other	Final/treated effluent	Ditch Tributary of the River Yare
16	Discharge Consent	612800	317100	<b>PRENF13605</b>	Sewage disposal works - other	Final/treated effluent	River Wensum
17	Discharge Consent	611510	339510	<b>PRENF20356</b>	Sewage disposal works - other	Final/treated effluent	River Glaven
18	Discharge Consent	610700	343700	<b>AW4NF13BX</b>	Sewage Disposal Works - water company	Final/treated effluent	Shingle Ditch The Sea
19	Discharge Consent	613160	309120	<b>PRENF15315</b>	Domestic Property (Single)	Final/treated effluent	Tributary of the River Yare

Reference	Licence Type	Easting	Northing	EA Reference	Operator	Effluent Type	Receiving Environment
20	Discharge Consent	612048	339371	<b>EPRVP3625GK</b>	Other Tourist/Short Stay Accommodation	Final/treated effluent	Tributary of the River Glaven
21	Discharge Consent	613740	309120	<b>PRENF16586</b>	Domestic Property (Single)	Final/treated effluent	River Yare
22	Discharge Consent	615930	306790	<b>AW4NF1037</b>	Sewerage Network - Pumping Station - water company	Sewage discharges - Pumping Station - water Company	Unknown Tributary of the River Yare
23	Discharge Consent	610400	332100	<b>PR2NFE25766</b>	-	Miscellaneous Discharge – Surface Water	Tributary Stour Estuary
24	Discharge Consent	612980	309170	<b>PRENF00885</b>	Sewage disposal works - other	Final/treated effluent	Tributary of the River Yare
25	Discharge Consent	615460	306370	<b>PRENF15042</b>	Domestic Property (Single)	Final/treated effluent	Tributary of the River Yare
26	Discharge Consent	615900	306800	<b>AEENF2472</b>	Sewage Disposal Works - water company	Miscellaneous Discharge – Emergency Discharges	Ditch
27	Discharge Consent	610500	330700	<b>PR4NF1524</b>	Domestic Property (Single)	Final/treated effluent	River Bure
28	Discharge Consent	613000	310000	<b>PR4NF237X</b>	Sewage disposal works - other	Final/treated effluent	River Yare
29	Discharge Consent	619700	303100	<b>AEENF2228</b>	Sewerage Network - Pumping Station - water company	Sewerage Network - Pumping Station - water company	Main IDB Ditch Tributary River Yare
30	Discharge Consent	609920	333180	<b>PRELF01079</b>	-	Unspecified	Land
31	Discharge Consent	609920	333720	<b>PR4NF1334</b>	Sewage disposal works - other	Final/treated effluent	Tributary River Bure
32	Discharge Consent	609820	333180	<b>PRELF03073</b>	-	Unspecified	Land
33	Discharge Consent	609800	333200	<b>PR4LF83009</b>	Domestic Property (Single)	Final/treated effluent	Land
Reference	Licence Type	Easting	Northing	Incident Reference	Pollutant	Water Impact	Date
<b>Pollution Incidents</b>							
34	Pollution Incidents	611680	339640	<b>169308</b>	Oils and Fuel	Category 4 (No Impact)	27/06/2003
35	Pollution Incidents	622099	302186	<b>196489</b>	Inert Materials and Wastes	Category 4 (No Impact)	16/10/2003
37	Pollution Incidents	616720	304990	<b>133869</b>	Sewage Materials	Category 4 (No Impact)	17/01/2003
38	Pollution Incidents	612296	322426	<b>23066</b>	Specific Waste Materials	Category 4 (No Impact)	09/08/2001
39	Pollution Incidents	613070	311010	<b>137684</b>	Inorganic Chemicals/Products	Category 4 (No Impact)	18/02/2003
40	Pollution Incidents	613092	310866	<b>62739</b>	Oils and Fuel	Category 4 (No Impact)	08/03/2002
41	Pollution Incidents	611520	336590	<b>156913</b>	Agricultural Materials and Wastes	Category 4 (No Impact)	08/05/2003
42	Pollution Incidents	620125	303004	<b>136271</b>	Sewage Materials	Category 3 (Minor)	11/02/2003
43	Pollution Incidents	620040	303080	<b>187336</b>	Other Pollutant	Category 3 (Minor)	04/09/2003



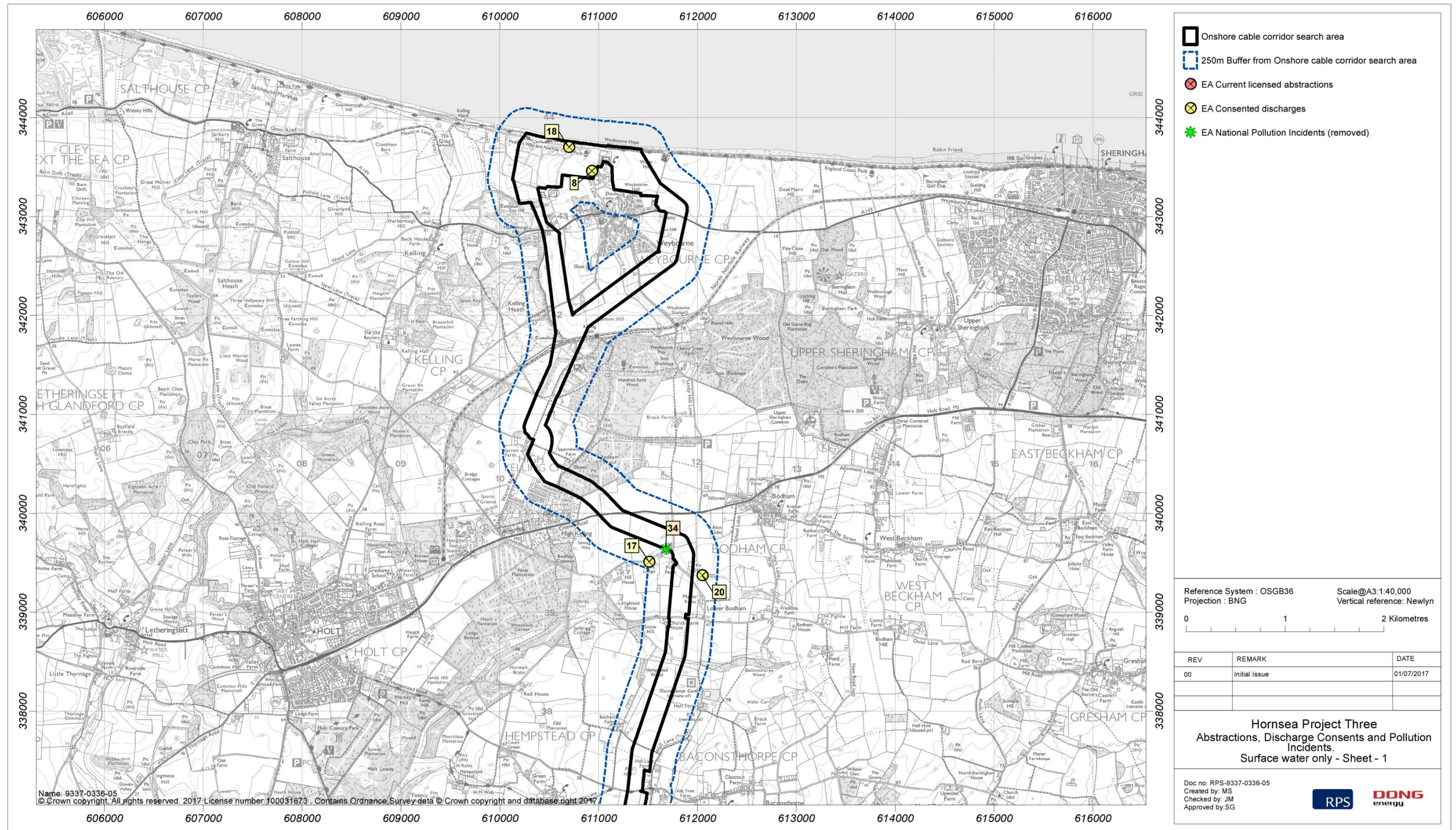


Figure 1.1: Abstraction Licences, Drainage Consents and Pollution Incidents.







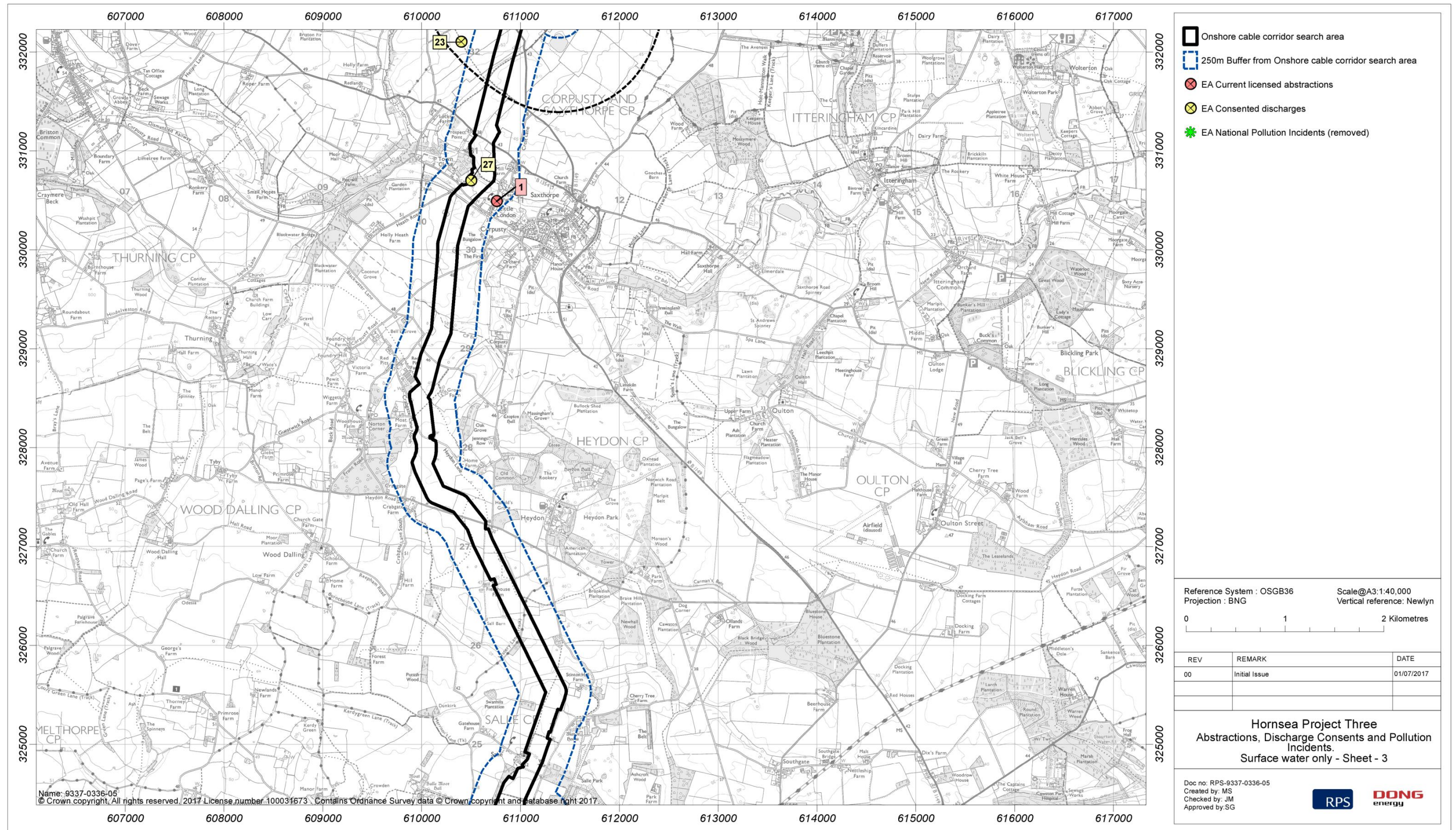


Figure 1.1: Abstraction Licences, Discharge Consents and Pollution Incidents.



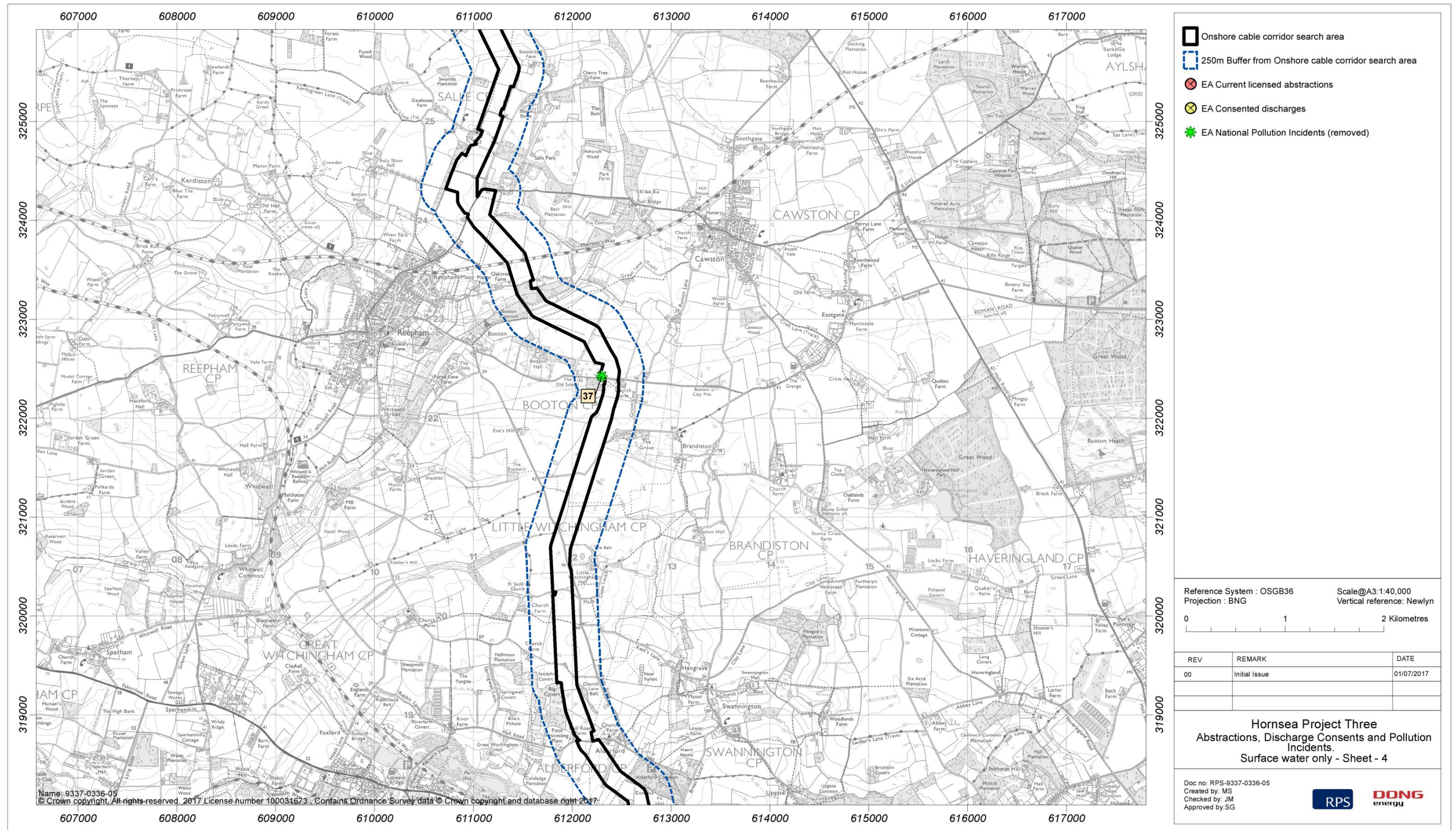


Figure 1.1: Abstraction Licences, Discharge Consents and Pollution Incidents.



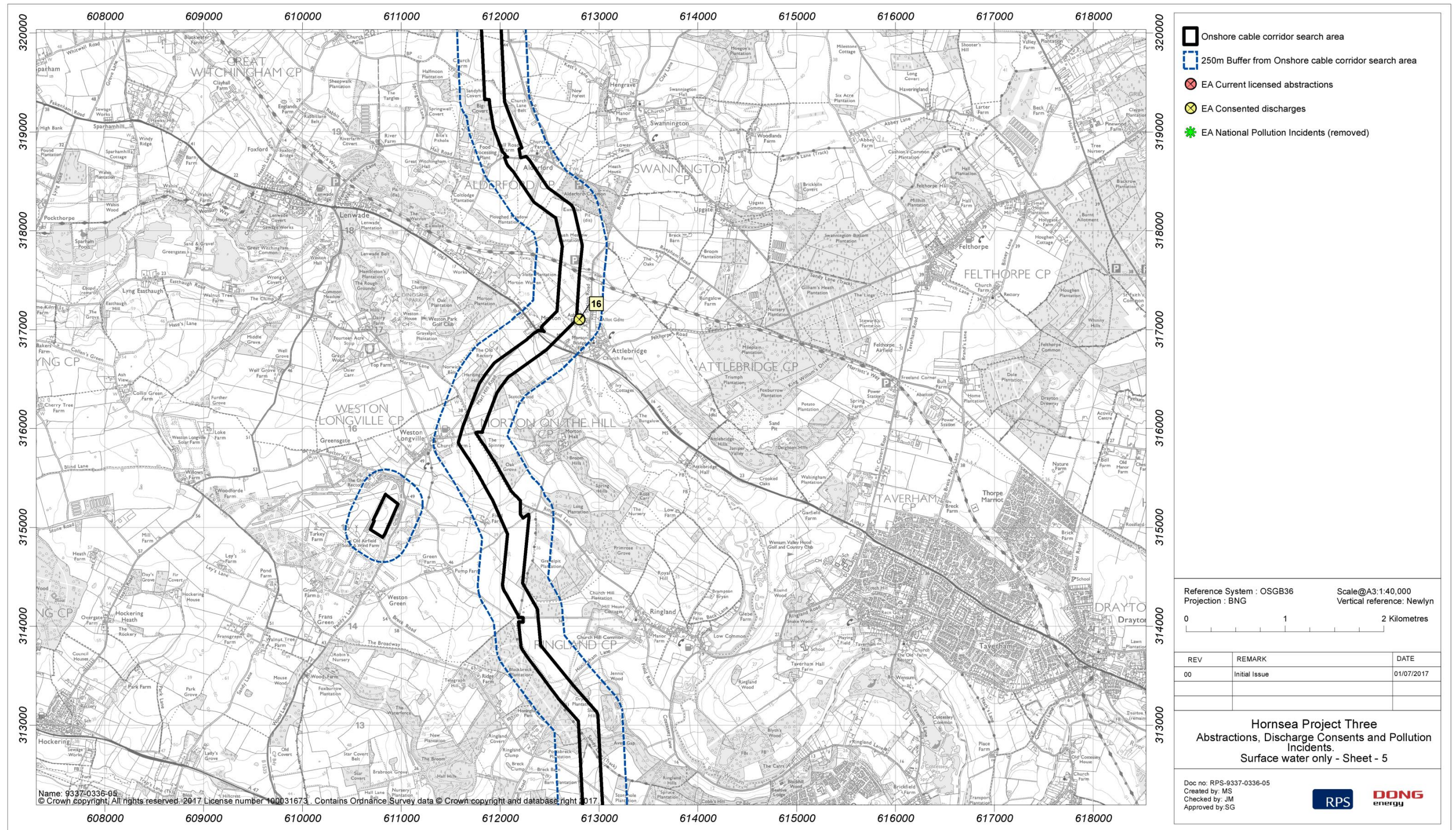


Figure 1.1: Abstraction Licences, Discharge Consents and Pollution Incidents.



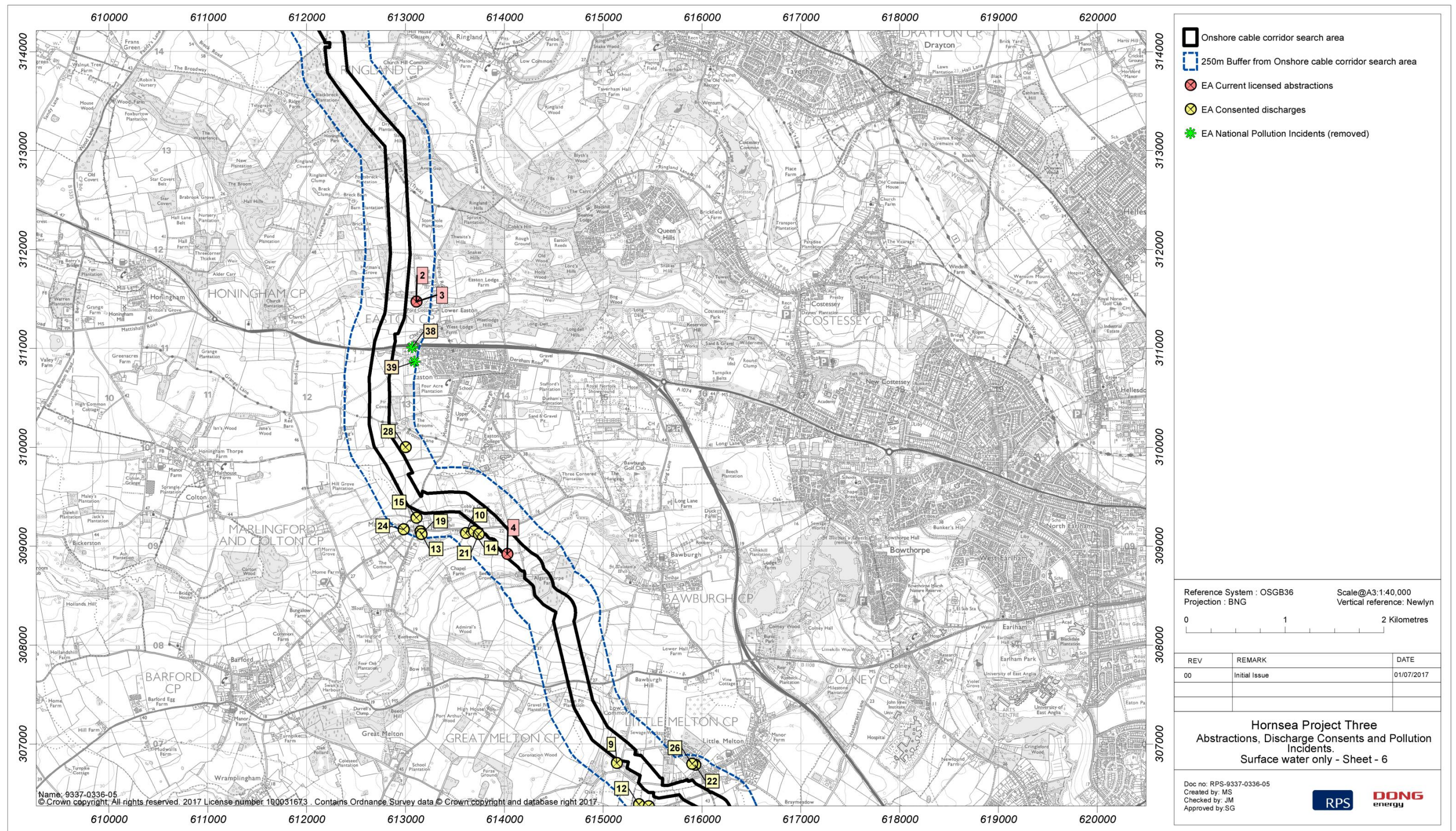


Figure 1.1: Abstraction Licences, Discharge Consents and Pollution Incidents.



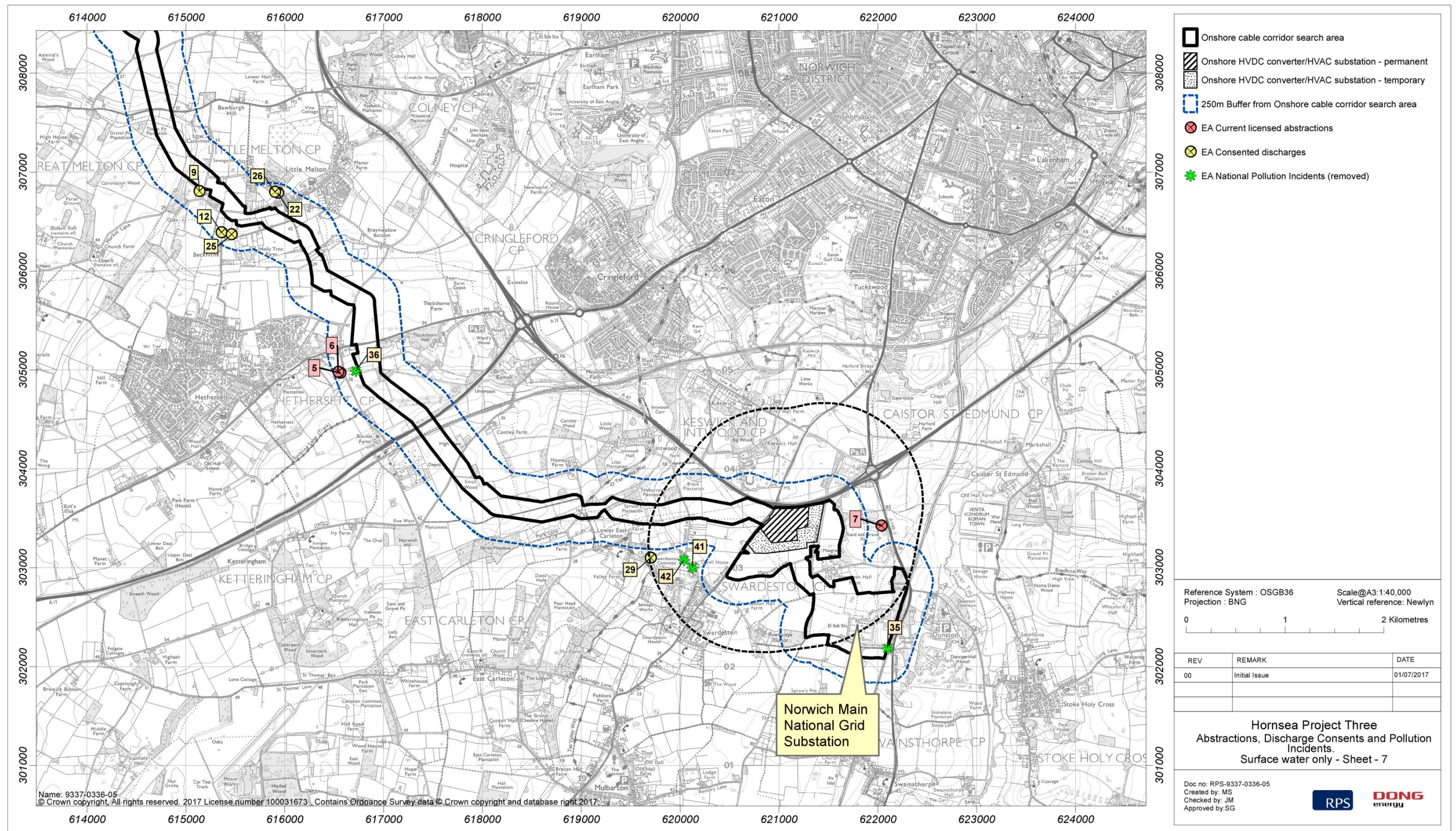


Figure 1.1: Abstraction Licences, Discharge Consents and Pollution Incidents.