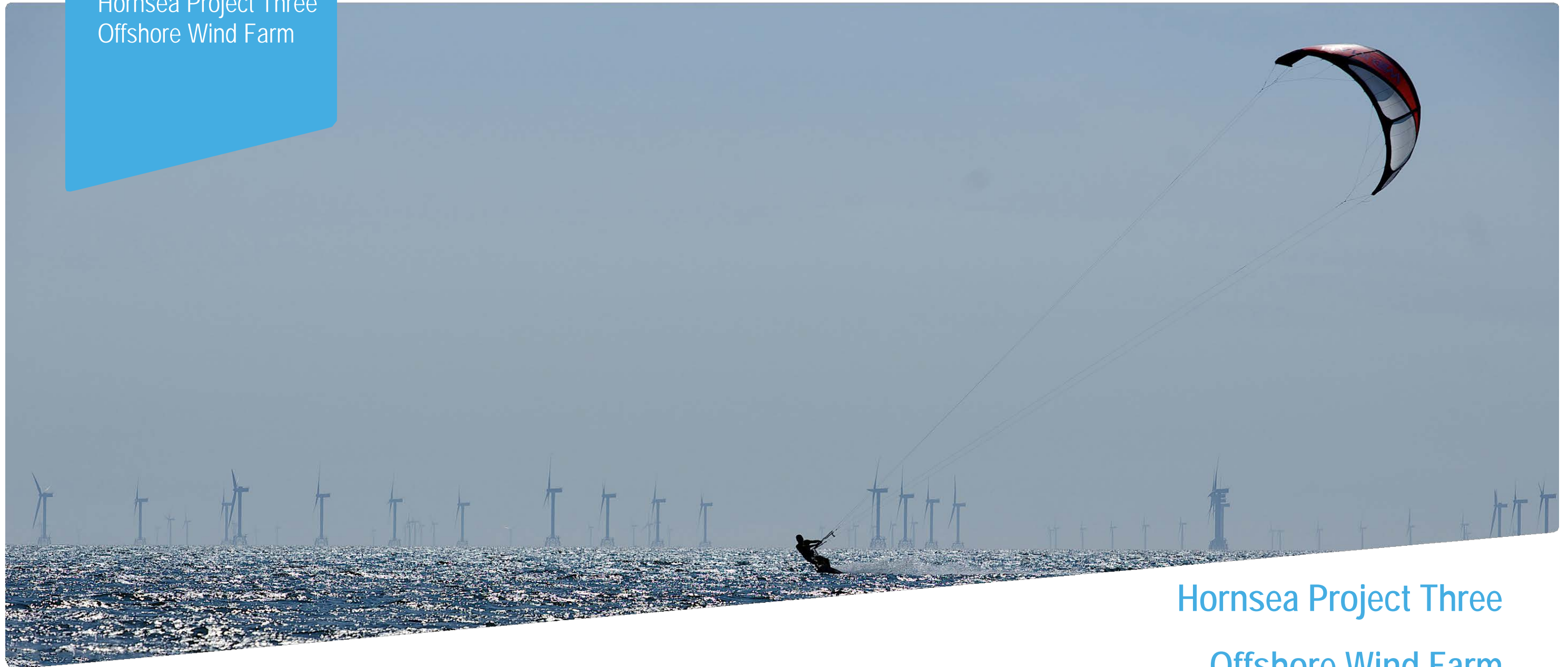


Hornsea Project Three
Offshore Wind Farm



Hornsea Project Three Offshore Wind Farm

Environmental Statement:
Volume 5, Annex 10.2 - Seascape and Visual Resources Wirelines

PINS Document Reference: A6.5.10.2
APFP Regulation 5(2)(a)

Date: May 2018


Hornsea 3
Offshore Wind Farm

 **Orsted**

Environmental Impact Assessment

Environmental Statement

Volume 5

Annex 10.2 – Seascape and Visual Resources Wirelines

Liability

This report has been prepared by RPS, with all reasonable skill, care and diligence within the terms of their contracts with Orsted Power (UK) Ltd.

Report Number: A6.5.10.2

Version: Final

Date: May 2018

This report is also downloadable from the Hornsea Project Three offshore wind farm website at:

www.hornseaproject3.co.uk

Ørsted

5 Howick Place,

London, SW1P 1WG

© Orsted Power (UK) Ltd., 2018. All rights reserved

Front cover picture: Kite surfer near a UK offshore wind farm © Orsted Hornsea Project Three (UK) Ltd., 2018.

Prepared by: RPS

Checked by: Jennifer Brack

Accepted by: Sophie Banham

Approved by: Sophie Banham

List of Figures

Figure 1:	Hornsea Three, as well as RYA, ferry routes, and existing oil and gas platforms.....	1
Figure 2:	Viewpoint 1: Newcastle to Amsterdam ferry route – 75° and 180° field of vision (Layout A - 300 turbines with a maximum blade tip height of 250 m).....	2
Figure 3:	Viewpoint 2: Newcastle to Amsterdam ferry route – 75° and 180° field of vision (Layout A - 300 turbines with a maximum blade tip height of 250 m).....	3
Figure 4:	Viewpoint 3: Newcastle to Amsterdam ferry route – 75° and 180° field of vision (Layout A - 300 turbines with a maximum blade tip height of 250 m).....	4
Figure 5:	Viewpoint 4: RYA cruising route – 75° and 180° field of vision (Layout A - 300 turbines with a maximum blade tip height of 250 m).....	5
Figure 6:	Viewpoint 5: J6A platform – 75° and 180° field of vision (Layout A - 300 turbines with a maximum blade tip height of 250 m).....	6
Figure 7:	Viewpoint 6: Murdoch platform – 75° and 180° field of vision (Layout A - 300 turbines with a maximum blade tip height of 250 m).....	7
Figure 8:	Viewpoint 1: Newcastle to Amsterdam ferry route – 75° and 180° field of vision (Layout B - 160 turbines with a maximum blade tip height of 325 m).....	8
Figure 9:	Viewpoint 2: Newcastle to Amsterdam ferry route – 75° and 180° field of vision (Layout B - 160 turbines with a maximum blade tip height of 325 m).....	9
Figure 10:	Viewpoint 3: Newcastle to Amsterdam ferry route – 75° and 180° field of vision (Layout B - 160 turbines with a maximum blade tip height of 325 m).....	10
Figure 11:	Viewpoint 4: RYA cruising route – 75° and 180° field of vision (Layout B - 160 turbines with a maximum blade tip height of 325 m).....	11
Figure 12:	Viewpoint 5: J6A platform – 75° and 180° field of vision (Layout B - 160 turbines with a maximum blade tip height of 325 m).....	12
Figure 13:	Viewpoint 6: Murdoch platform – 75° and 180° field of vision (Layout B - 160 turbines with a maximum blade tip height of 325 m).....	13

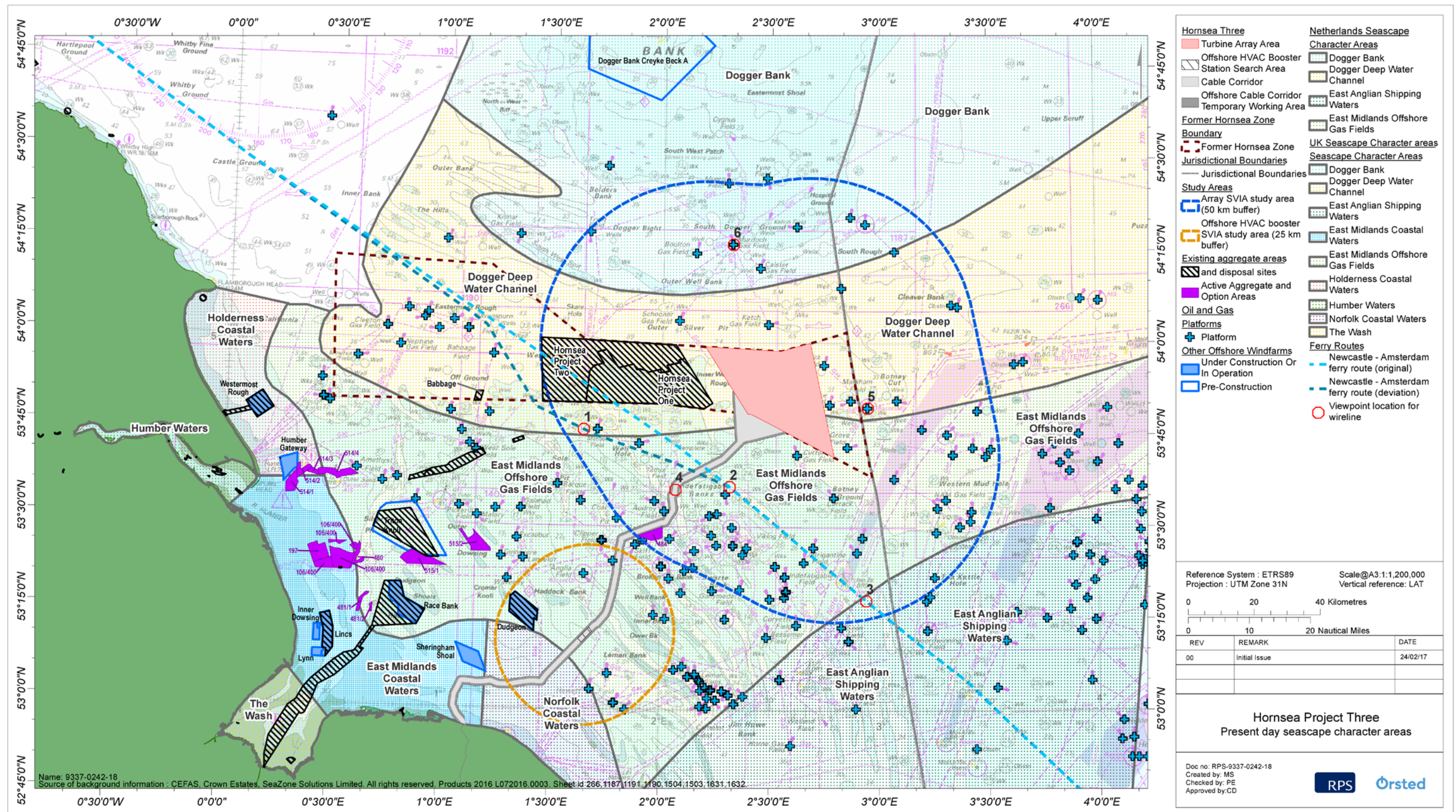


Figure 1: Hornsea Three, as well as RYA, ferry routes, and existing oil and gas platforms.



Figure 2: Viewpoint 1: Newcastle to Amsterdam ferry route – 75° and 180° field of vision (Layout A - 300 turbines with a maximum blade tip height of 250 m).



Figure 3: Viewpoint 2: Newcastle to Amsterdam ferry route – 75° and 180° field of vision (Layout A - 300 turbines with a maximum blade tip height of 250 m).



Figure 4: Viewpoint 3: Newcastle to Amsterdam ferry route – 75° and 180° field of vision (Layout A - 300 turbines with a maximum blade tip height of 250 m).



Figure 5: Viewpoint 4: RYA cruising route – 75° and 180° field of vision (Layout A - 300 turbines with a maximum blade tip height of 250 m).

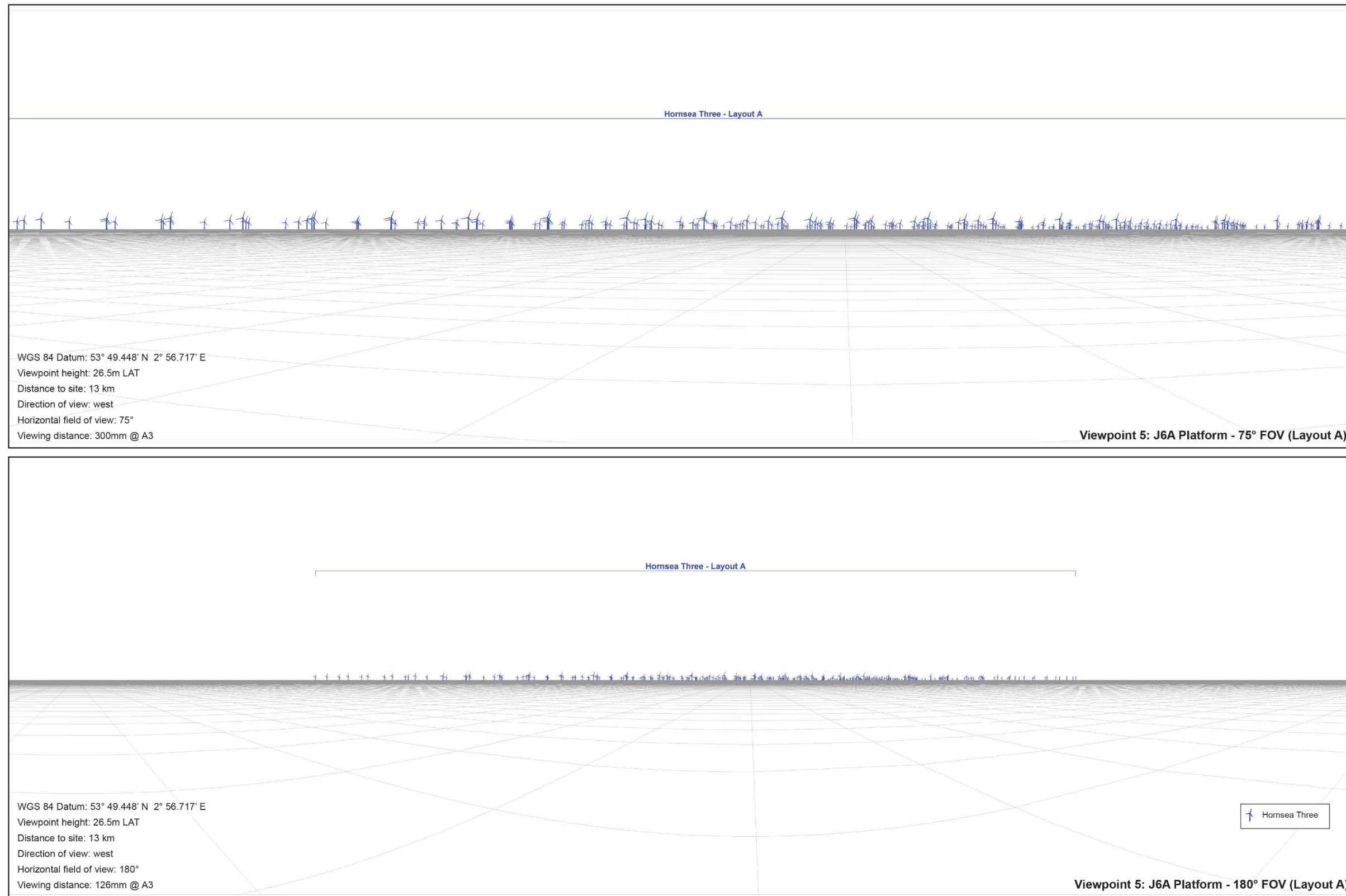


Figure 6: Viewpoint 5: J6A platform – 75° and 180° field of vision (Layout A - 300 turbines with a maximum blade tip height of 250 m).

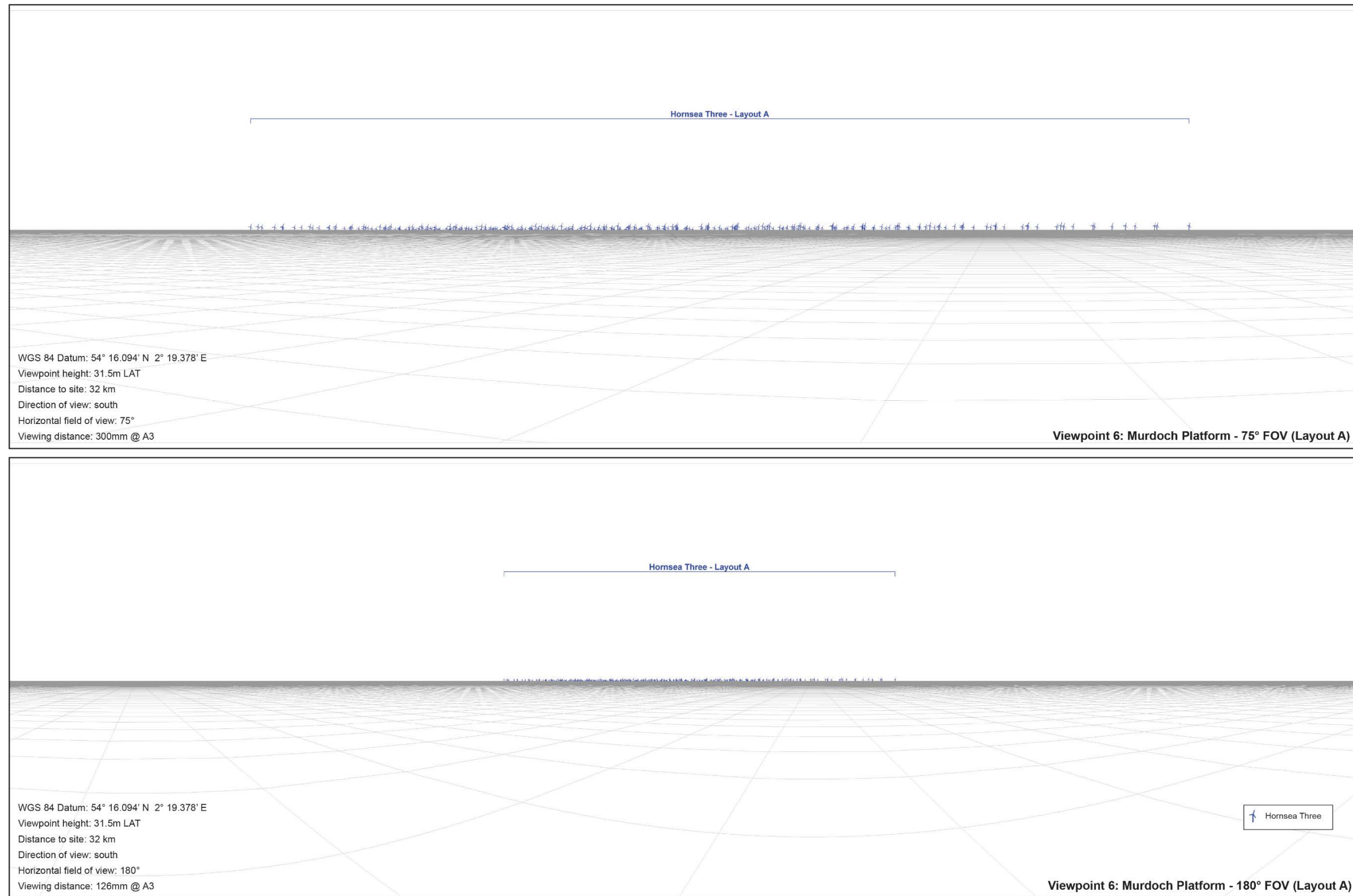


Figure 7: Viewpoint 6: Murdoch platform – 75° and 180° field of vision (Layout A - 300 turbines with a maximum blade tip height of 250 m).

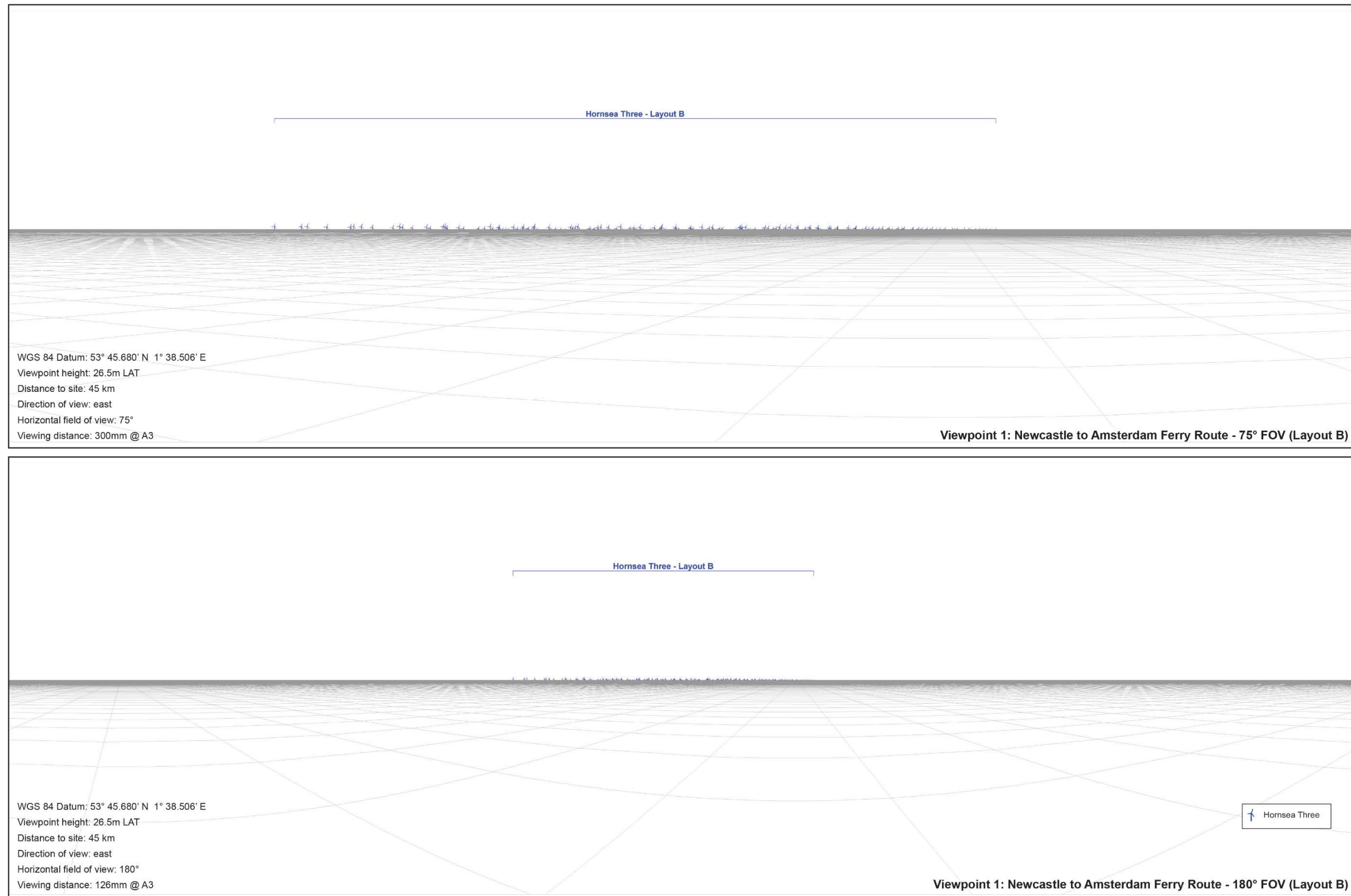


Figure 8: Viewpoint 1: Newcastle to Amsterdam ferry route – 75° and 180° field of vision (Layout B - 160 turbines with a maximum blade tip height of 325 m).

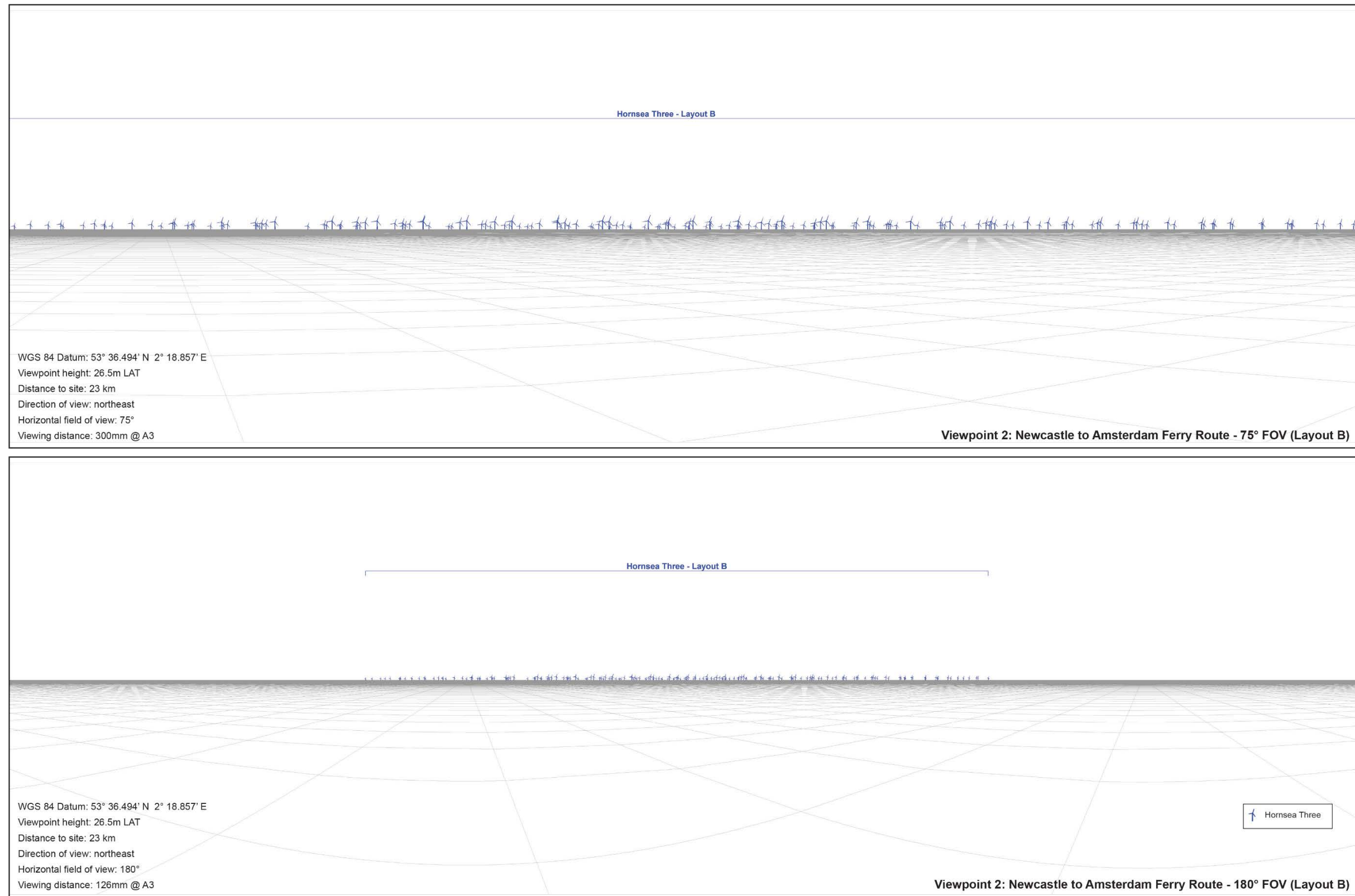


Figure 9: Viewpoint 2: Newcastle to Amsterdam ferry route – 75° and 180° field of vision (Layout B - 160 turbines with a maximum blade tip height of 325 m).



Figure 10: Viewpoint 3: Newcastle to Amsterdam ferry route – 75° and 180° field of vision (Layout B - 160 turbines with a maximum blade tip height of 325 m).



Figure 11: Viewpoint 4: RYA cruising route – 75° and 180° field of vision (Layout B - 160 turbines with a maximum blade tip height of 325 m).

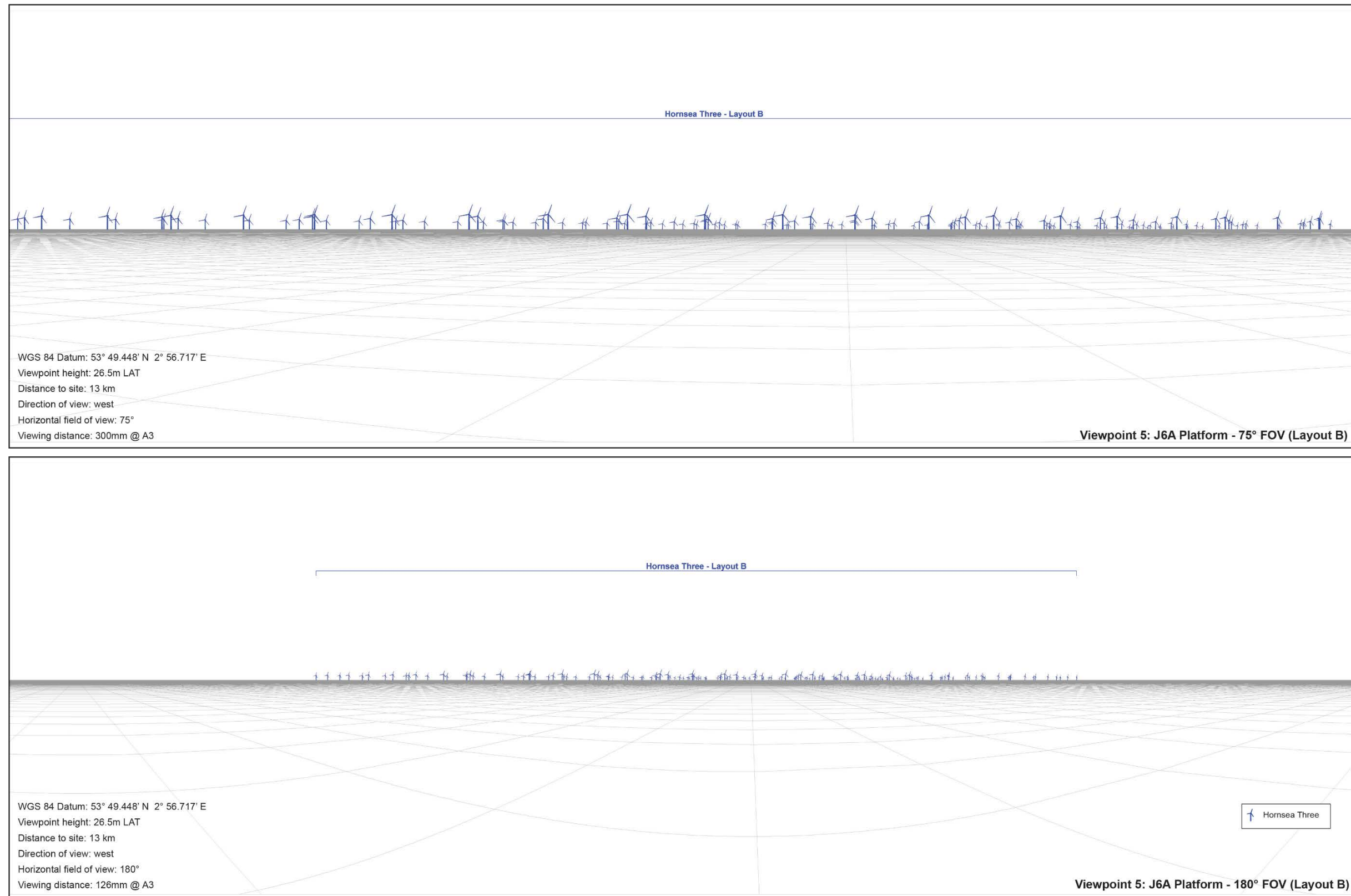


Figure 12: Viewpoint 5: J6A platform – 75° and 180° field of vision (Layout B - 160 turbines with a maximum blade tip height of 325 m).

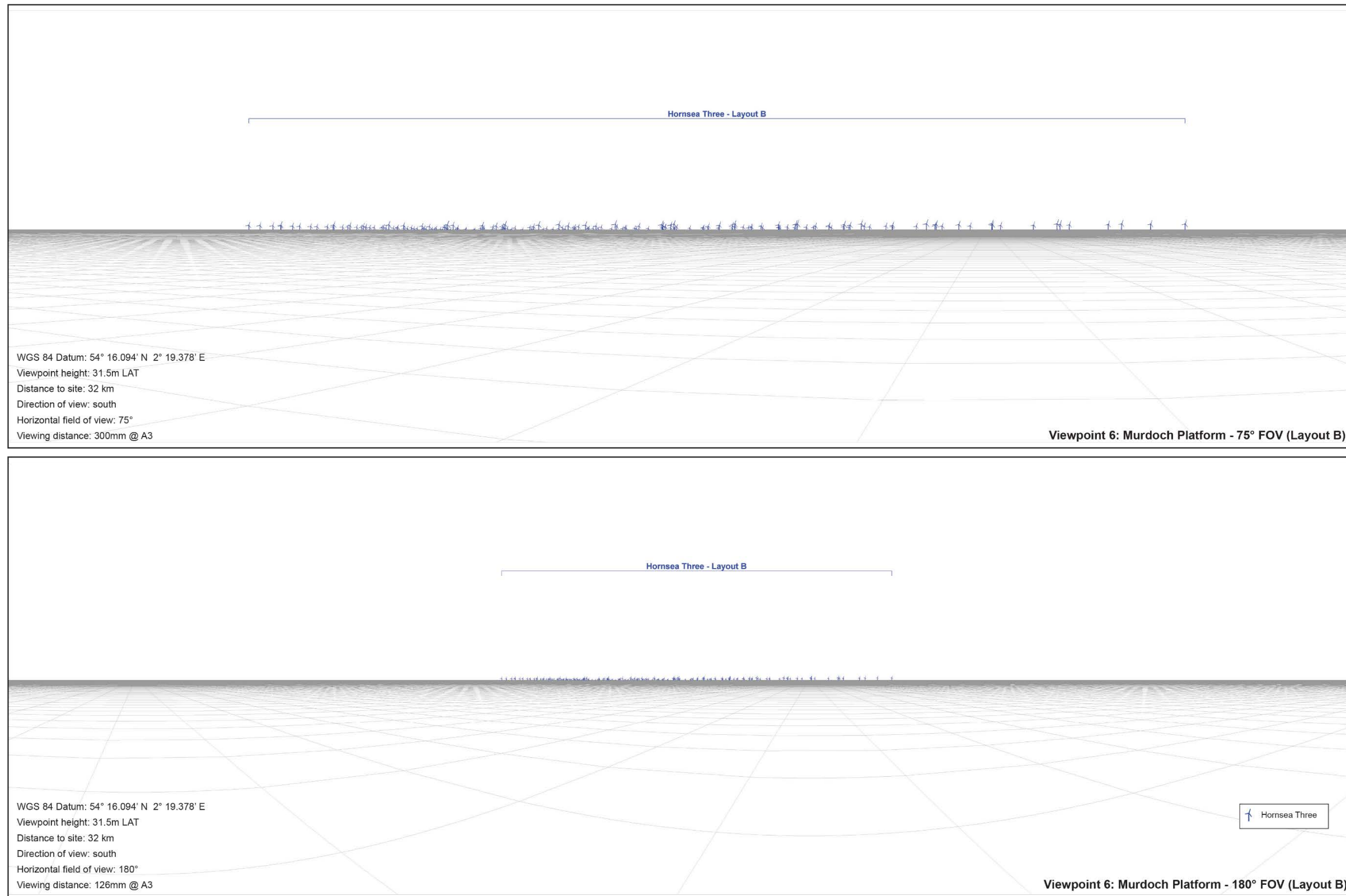


Figure 13: Viewpoint 6: Murdoch platform – 75° and 180° field of vision (Layout B - 160 turbines with a maximum blade tip height of 325 m).