

Hornsea Project Four: Preliminary Environmental Information Report (PEIR)

Volume 4, Annex 4.2: Onshore Crossing Schedule

Prepared David Brooks, Ørsted, 15 July 2019
Checked Ant Sahota, Ørsted, 16 July 2019
Accepted Tom Watts, Ørsted, 16 July 2019
Approved Julian Carolan, Ørsted, 19 July 2019

Hornsea 4



Contents

1	Glossary and Acronyms	Presents defined terms and acronyms used within the onshore Crossing Schedule	2
2	Guide - How to read the Hornsea Four Onshore Crossing Schedule	Provides an a guide on the information contained within the Crossing Schedule and how it is intended to be read	3
3	Onshore Crossing Schedule	Contains the list of all crossings identified to be crossed by Hornsea Four	5
4	Plans	Accompanying plans showing all crossings identified to be crossed by Hornsea Four	15

Hornsea 4



Glossary

Term	Definition
Export cable corridor (ECC)	The specific corridor of seabed (seaward of Mean High Water Springs (MHWS)) and land (landward of MHWS) from the Hornsea Project Four array area to the Creyke Beck National Grid substation, within which the export cables will be located.
Haul Road	The track along the onshore ECC which the construction traffic would use to access work fronts.
Landfall	The generic term applied to the entire landfall area between Mean Low Water Spring (MLWS) tide and the Transition Joint Bay (TJB) inclusive of all construction works, including the offshore and onshore ECC, intertidal working area and landfall compound.
Onshore substation / OnSS	Located as close as practical to the NGET substation at Creyke Beck and will include all necessary electrical plant to meet the requirements of the National Grid.
Trenchless Techniques	Also referred to as trenchless crossing techniques or trenchless methods. These techniques include HDD, thrust boring, auger boring, and pipe ramming, which allow ducts to be installed under an obstruction without breaking open the ground and digging a trench.

Units

Term	Definition
kV	kilovolt

Acronyms

Acronym	Definition
ACC	Access (Access track)
Co	Commitment
EA	Environment Agency
ECC	Export cable corridor (onshore export cable corridor)
EN	Environment
ERY	East Riding of Yorkshire
ERYC	East Riding of Yorkshire Council
HC	Haul road crossing
HDD	Horizontal Directional Drilling
ID	Identifier
IDB	Internal Drainage Board (Beverley and North Holderness)
LC	Logistics Compound
LF	Landfall
LLFA	Lead Local Flood Authority (ERYC)
LWS	Local Wildlife Site
No.	Number
OS	Ordnance Survey
PRoW	Public right of way
PW	Public right of way
RA	Railway
RO	Road
SS	Substation (Onshore substation)
SSSI	Site of Special Scientific Interest
UT	Utility
WA	Water

How to read the Hornsea Four Onshore Crossing Schedule

Heading in Crossing Schedule	Explanation of Information within column
Ørsted Crossing Identification Number (No.)	<p>1. The crossing IDs are split according to the different elements of the onshore infrastructure. The permanent onshore infrastructure elements of Hornsea Four are identified as follows, and form the first part of the Crossing ID:</p> <ul style="list-style-type: none"> (a) the landfall - crossings at the landfall begin with 'LF'; (b) the onshore export cable corridor (ECC) - crossings along the onshore ECC begin with 'ECC'; and (c) the onshore substation (OnSS) - crossings at the OnSS begin with 'SS' <p>The temporary onshore infrastructure elements are identified as follows, and are identified in relation to the permanent infrastructure elements they are intended to serve:</p> <ul style="list-style-type: none"> (a) Logistics Compound - where the crossing is identified in a logistics compound, 'LC' will follow the identifier for the element of the permanent infrastructure. For example, 'ECC_LC...' or 'SS_LC...'; and (b) Access track - where the crossing is identified on an access track, 'ACC' will follow the identifier for the element of the permanent infrastructure. For example, 'ECC_ACC...' or 'LF_ACC...' <p>Logistics compound and access track crossings are numbered sequentially along with the cable crossings. Where a crossing is associated to either a Haul Road Crossing or a Highway Access Point, the associated Haul Road Crossing ID [Column N of the 'Crossing Schedule' sheet] or Highway Access Point ID [Column O of the 'Crossing Schedule' sheet] has been added to schedule for each associated point (see Cell B18 and B19 of this Guide for a further explanation of Haul Road Crossings and Highway Access Points).</p> <p>N.B. The Crossing ID will only include a reference to 'Logistics Compound/ Access' (LC/ ACC) where applicable. If the ID does not include either of these markers, then it should be assumed that the crossing sits within the permanent footprint of the landfall, onshore ECC or OnSS.</p> <p>2. The second part of the crossing ID relates to the crossing categories:</p> <ul style="list-style-type: none"> Roads (RO) – public, private, access tracks, bridges etc. Rail (RA) - railways Environment (EN) – hedgerows, habitats, trees etc. Water (WA) – rivers, streams, drains, ditches, ponds etc. Utility (UT) – pipelines, underground cables & overhead lines etc. Public Right of Ways (PW) – footpaths, bridleways, cycle paths etc <p>3. The third part of the Crossing ID relates to number of the crossing which runs largely in numerical order from '001'. (The exceptions to these being crossing which were identified at a later stage, and therefore follow on from the last used number).</p> <p>See the 'Plan' sheet for plans showing all Crossing Identification Numbers.</p>
Type of Obstacle	<p>Provides a more detailed description of the obstacle, moving on from 'WA'/'RO' categories used in the Crossing ID. The types of road should be listed. For example:</p> <ul style="list-style-type: none"> Roads - are identified as A, B, classified, unclassified roads; Designated Rights of Way - as identified as bridleways, footpaths, cycleways; Watercourse - is used to cover all drains and rivers; Isolated waterbodies - are identified as ponds; Other areas of environmental value - are described as woodland, hedgerow, trees; and Utilities - are described as cables, pipelines
Obstacle Name	<p>This will give the details of any name already assigned to the feature being crossed, e.g. name/ number of the road, footpath or cycle path number, river/ drain name, pond name, woodland name, SSSI name.</p> <p>N.B. If a crossing is not named then for example, the road or drain is called 'unnamed' road/drain.</p>
Obstacle Description	<p>To describe further details about the obstacle e.g. SSSI, Semi Natural Broad Leaved Woodland, Species Poor Intact Hedgerow, Species Poor Defunct Hedgerow, Main River, Ordinary Watercourse.</p>

Hornsea 4



Heading in Crossing Schedule	Explanation of Information within column
Asset Owner/ Responsible Authority	<p>All known 'Asset owners' are listed here. For example: Utilities - Northern power grid, National Grid, Yorkshire Water Railway - Network Rail Hedgerows/ trees - Private, Unknown, Local Highways Authority Roads - Private, Local Highways Authority</p> <p>'Responsible Authorities' are used for Watercourses. The responsible authorities include the Environment Agency (EA) for Main Rivers, ERYC for Ordinary Watercourses not maintained by the IDB (as the LLFA) and the IDB for all IDB maintained drains.</p> <p>See the 'Plan' sheet for data layers relating to utilities, roads and railways.</p>
Obstacle Comments	<p>These comments are limited to general comments about the obstacle itself, and details about its features.</p>
Proposed Crossing Method	<p>High level details as to the proposed crossing method. i.e. Horizontal Directional Drilling (HDD) / Open Cut, or just 'HDD' or 'Open Cut.'</p> <p>Where the crossing identified is on an access track (ACC) or possibly logistics compound (LC), the proposed crossing method will state 'bridge/ culvert' where relevant.</p> <p>The 'Indicative drill line' layer on the accompanying plans on the 'Plan' sheet shows the indicative HDD locations for onshore elements of Hornsea Four.</p>
Ørsted HDD Category	<p>This refers to the indicative proposed maximum design scenario HDD rig to be used as each crossing. 1 = large (i.e. landfall) 2 = medium (i.e all HDDs along the route, apart from landfall)</p> <p>See Volume 1, Chapter 4: Project Description for details on the types of HDD rigs which are likely to be used for Hornsea Four.</p>
Ørsted HDD ID	<p>Each individual indicative HDD has been given its own reference. Where multiple obstacles are being crossed using the same HDD they are grouped in reference to the same HDD ID.</p>
PRoW management	<p>Where we may be crossing a footpath or bridleway by HDD or open cut, we may be required to 'Divert', 'Manage' or 'Stop up' the PROW. Where permanent rights may be required, 'Permanent' is used as a prefix. i.e. 'Permanent Diversion' for the OnSS.</p>
Related Commitment (Co) Number	<p>This column denotes any relevant Commitment number which relates to a crossing. E.g. Where Ørsted has made a commitment to using trenchless techniques, such as HDD to cross a certain type of obstacle, the corresponding commitment number will be listed here.</p> <p>For full details of the Commitments, please refer to Annex 4.5.2: Commitments Register.</p>
Haul Road Crossing	<p>Illustrates the Haul road crossing number where a haul road crossing is currently required across an obstacle (e.g. road or watercourse), regardless of the 'Crossing technique.' i.e. Open Cut/ HDD.</p> <p>See also the 'Haul Road Crossing' data layer on the 'Plan' sheet for all indicative locations where haul road crossing of obstacles are currently proposed.</p>
Highway Access Point	<p>Highway Access Points denote all propose points where construction or operational traffic is proposed to take access from an existing highway network. If there is a temporary or permanent access track with crossing points, those points will be associated to the corresponding access point in this column in the 'Crossing Schedule' sheet.</p> <p>See also the 'Access Point' layer on the 'Plan' sheet for all indicative locations where access from existing highways is proposed.</p>
District	<p>The name of the District within which the obstacle lies.</p>

Hornsea 4



Onshore Crossing Schedule

X Coordinate	Y Coordinate	Ørsted Crossing Identification No.	Type of Obstacle	Obstacle Name	Obstacle Description	Asset Owner / Responsible Authority	Obstacle Comments	Proposed Crossing Method	Ørsted HDD Category	Ørsted HDD ID	PRoW management	Related Co Number	Haul Road Crossing	Highway Access Point	District
516896.6317	462779.8474	LF_ACC_001	Watercourse	Auburn Beck	Ordinary watercourse (LLFA)	Unknown Owner / ERYC		n/a		n/a			HC_044		ERY
517000.5938	462756.5625	LF_ACC_002	Watercourse		Ordinary watercourse (LLFA)	Private / ERYC		HDD / Open Cut	1	1					ERY
516459.6404	461403.0072	LF_A3_WA_003	Watercourse	Earl's Dike (Watermill Beck - to road)	Ordinary watercourse (IDB maintained drain)	Beverley and North Holderness IDB		HDD	1	3		1	HC_001		ERY
516521.1253	461102.5948	LF_A3_ACC_PW_004	Footpath	Barmston Footpath No. 4		ERYC		n/a		n/a	To be confirmed				ERY
516568.8896	460899.7923	LF_A4_PW_005	Footpath	Barmston Footpath No. 4	Commences at the outlet of Earl's Dike and runs parallel to the south of Earl's Dike in a westerly direction for approximately 400 m and then in a generally southerly direction to Occupation Road in Barmston village	ERYC		Open Cut	1	2	To be confirmed				ERY
516567.4114	460876.4203	LF_A4_WA_006	Watercourse		Ordinary watercourse (LLFA)	Private / ERYC	Drain at edge of field	Open Cut	1	2					ERY
515988.5186	460838.9214	LF_A3_WA_007	Watercourse		Ordinary watercourse (LLFA)	Private / ERYC	Drain at edge of field	Open Cut	1	10			HC_003		ERY
516022.0544	460822.4957	LF_A3_EN_008	Trees			Private		Open Cut	1	10			HC_003		ERY
515978.9549	460810.6138	LF_A3_WA_009	Watercourse		Ordinary watercourse (LLFA)	Private / ERYC	Drain at edge of field	Open Cut	1	10			HC_003		ERY
515828.5117	460690.6956	ECC_EN_010	Hedgerow			Private		HDD / Open Cut	2	4			HC_004		ERY
515784.5022	460672.1701	ECC_UT_011	Cable		Overhead Line	Northern Powergrid (Yorkshire)		HDD / Open Cut	2	4			HC_004		ERY
515673.7295	460515.8754	ECC_PW_012	Footpath	Barmston Footpath No. 3	Commences at the Fraisthorpe road 80 m west of the junction and leads in a southerly direction to the junction with Barmston main street at a point opposite the Rectory	ERYC		Open Cut		n/a	To be confirmed				ERY
515582.3666	460280.2704	ECC_EN_013	Hedgerow			Private		Open Cut		n/a					ERY
515568.9968	460101.9616	ECC_PW_014	Footpath	Barmston Footpath No. 2	Commences at the Bridlington Road, A165 at Quintin Garth and leads in a south easterly direction to junction with Footpath No. 3	ERYC		Open Cut		n/a	To be confirmed				ERY
515592.5797	460043.0129	ECC_EN_015	Trees			Private		HDD / Open Cut	2	5					ERY
515534.2982	460036.1557	ECC_EN_016	Trees			Private		HDD / Open Cut	2	5					ERY
515304.4974	459584.5846	ECC_EN_017	Hedgerow			Local Highway Authority / Private	Natural border between landowners	HDD	2	6					ERY
515299.1318	459577.956	ECC_RO_018	A Road	A165 / Bridlington Road		Local Highway Authority		HDD	2	6					ERY
515293.4418	459572.4165	ECC_UT_019	Pipeline		Water	Yorkshire Water		HDD	2	6			HC_005	AP_003	ERY
515293.824	459568.5873	ECC_UT_020	Cable		Telecommunications	Openreach (British Telecommunications)		HDD	2	6			HC_005	AP_003	ERY
515291.6849	459564.6531	ECC_EN_021	Hedgerow			Local Highway Authority / Private	Natural border between landowners	HDD	2	6			HC_005	AP_003	ERY
515311.8237	459490.1073	ECC_LC_UT_022	Cable		Telecommunications	Openreach (British Telecommunications)	Identified in aerial imagery, not in utility data	n/a		n/a			HC_005	AP_003	ERY
514939.9691	459319.6417	ECC_WA_023	Watercourse		Ordinary watercourse (LLFA)	Private / ERYC	Drain at edge of field	Open Cut		n/a			HC_006		ERY
514668.0469	458993.1045	ECC_EN_024	Trees			Private		HDD	2	7			HC_007		ERY

514678.7711	458979.8344	ECC_WA_025	Watercourse	Gransmoor Drain	Ordinary watercourse (IDB maintained drain)	Beverley and North Holderness IDB		HDD	2	7		1	HC_007		ERY
514681.3212	458792.5613	ECC_WA_026	Watercourse		Ordinary watercourse (LLFA)	Private / ERYC	Drain at edge of field	Open Cut		n/a			HC_008		ERY
514544.3498	458673.4197	ECC_EN_027	Trees			Private		HDD / Open Cut	2	8					ERY
514215.6207	458521.0724	ECC_EN_028	Hedgerow			Local Highway Authority / Private	Natural border between landowners	HDD	2	9			HC_005	AP_003	ERY
514214.9373	458520.7076	ECC_UT_029	Pipeline		Water	Yorkshire Water		HDD	2	9			HC_009		ERY
514214.5843	458520.5098	ECC_UT_030	Cable		Telecommunications	Openreach (British Telecommunications)		HDD	2	9			HC_009		ERY
514202.1234	458519.7061	ECC_EN_031	Hedgerow			Local Highway Authority / Private	Natural border between landowners	HDD	2	9			HC_005	AP_003	ERY
514206.2419	458517.5231	ECC_UT_033	Pipeline		Water	Yorkshire Water		HDD	2	9			HC_009		ERY
514209.2742	458518.7289	ECC_RO_032	Classified Unnumbered Road	Gransmoor Road		Local Highway Authority		HDD	2	9			HC_046		ERY
514202.9847	458516.0213	ECC_UT_034	Pipeline		Water	Yorkshire Water		HDD	2	9			HC_009		ERY
514122.3634	458475.4972	ECC_UT_035	Cable		Overhead Line	Northern Powergrid (Yorkshire)		n/a		n/a			HC_009		ERY
513869.474	458308.632	ECC_RO_036	Track			Private		HDD	2	11			HC_010		ERY
513869.0924	458303.8118	ECC_EN_037	Trees			Private		HDD	2	12			HC_010		ERY
513793.7035	457682.8888	ECC_EN_038	Hedgerow			Private		HDD / Open Cut	2	13			HC_011		ERY
513722.2988	457496.8681	ECC_UT_039	Cable		Underground Cable	Northern Powergrid (Yorkshire)		HDD / Open Cut	2	14			HC_012		ERY
513722.258	457496.7393	ECC_UT_040	Cable		Underground Cable	Northern Powergrid (Yorkshire)		HDD / Open Cut	2	14			HC_012		ERY
513722.2171	457496.6105	ECC_UT_041	Cable		Underground Cable	Northern Powergrid (Yorkshire)		HDD / Open Cut	2	14			HC_012		ERY
513720.6881	457491.7868	ECC_RO_042	Track			Private		HDD / Open Cut	2	14			HC_012		ERY
513719.2694	457487.311	ECC_EN_043	Hedgerow			Private		HDD / Open Cut	2	14			HC_012		ERY
513679.8188	457384.9009	ECC_UT_044	Pipeline	FM06 - Burton Agnes to Paull	750 mm Diameter	National Grid		HDD	2	15			HC_013		ERY
513646.7408	457298.3498	ECC_EN_045	Hedgerow			Private	Natural border between landowners	HDD / Open Cut	2	15			HC_009		ERY
513645.4941	457295.0877	ECC_RO_046	Road		Unclassified	Private		HDD / Open Cut	2	15			HC_013		ERY
513644.231	457291.5823	ECC_UT_047	Cable		Telecommunications	Openreach (British Telecommunications)		HDD / Open Cut	2	15			HC_013		ERY
513415.8447	456955.3316	ECC_EN_049	Trees			Private		Open Cut		n/a					ERY
513392.6154	456973.8433	ECC_EN_048	Hedgerow			Private		Open Cut		n/a					ERY
513201.4691	456820.9438	ECC_WA_050	Watercourse	Barmston Sea Drain	Ordinary watercourse (IDB maintained drain)	Beverley and North Holderness IDB		HDD	2	16		1	HC_014		ERY
512742.8729	456661.8686	ECC_EN_052	Hedgerow			Private		Open Cut		n/a					ERY
512004.2438	456486.0442	ECC_WA_053	Watercourse		Ordinary watercourse (LLFA)	Private / ERYC	Drain at edge of field	HDD / Open Cut	2	17			HC_015		ERY
512001.2241	456486.0069	ECC_EN_054	Hedgerow			Private	Natural border between landowners	HDD / Open Cut	2	17			HC_009		ERY
511735.8324	456585.138	ECC_WA_056	Watercourse	Barmston Sea Drain	Ordinary watercourse (IDB maintained drain)	Beverley and North Holderness IDB		HDD	2	18		1	HC_016		ERY
511634.4566	456605.7571	ECC_EN_057	Hedgerow			Local Highway Authority / Private	Natural border between landowners	HDD / Open Cut	2	19			HC_009		ERY
511631.2192	456605.2899	ECC_PW_058	Footpath	Foston on the Wolds Footpath No. 10	Commences at the southern end of the County Council maintained section of Out Gates Lane and continues southwards to the Beeford parish boundary to join Footpath No. 3	ERYC		HDD / Open Cut	2	19	To be confirmed				ERY
511630.3247	456605.1608	ECC_RO_059	Road	Out Gates	Unclassified	Unknown		HDD / Open Cut	2	19			HC_049		ERY
511624.1688	456604.2723	ECC_EN_060	Hedgerow			Local Highway Authority / Private	Natural border between landowners	HDD / Open Cut	2	19			HC_013		ERY
511615.7784	456628.2406	ECC_EN_061	Trees			n/a	Natural border between landowners	HDD / Open Cut	2	19			HC_015		ERY
511589.4258	456623.7956	ECC_EN_062	Trees			n/a	Natural border between landowners	HDD / Open Cut	2	19					ERY
511494.1757	456578.2343	ECC_EN_063	Tree			Private		Open Cut		n/a					ERY
511420.4298	456546.7261	ECC_EN_064	Trees			Private		Open Cut		n/a					ERY
511329.3491	456518.3339	ECC_EN_065	Trees			Private		Open Cut		n/a					ERY

511278.7069	456497.1863	ECC_EN_066	Hedgerow			Private		Open Cut		n/a							ERY
511063.9855	456361.3111	ECC_UT_067	Pipeline		Water	Yorkshire Water		HDD	2	20							ERY
511059.2505	456357.482	ECC_UT_068	Pipeline		Gas	Northern Gas Networks		HDD	2	20							ERY
510834.7522	456279.9811	ECC_EN_069	Hedgerow			Local Highway Authority / Private	Natural border between landowners	HDD	2	21							ERY
510830.5667	456279.8761	ECC_UT_070	Pipeline		Water	Yorkshire Water		HDD	2	21						HC_017	ERY
510826.9664	456279.7858	ECC_RO_71	Road	Old Howe Lane	Classified Unnumbered	Unknown		HDD	2	21						HC_049	ERY
510818.0428	456281.6898	ECC_EN_073	Hedgerow			Local Highway Authority / Private	Natural border between landowners	HDD	2	21							ERY
510819.8697	456279.7486	ECC_UT_072	Cable		Telecommunications	Openreach (British Telecommunications)		HDD	2	21						HC_017	ERY
510633.1216	456274.455	ECC_WA_074	Watercourse		Ordinary watercourse (LLFA)	Private / ERYC	Drain at edge of field	Open Cut		n/a						HC_018	ERY
510523.5872	456271.3501	ECC_UT_075	Cable		Overhead Line	Northern Powergrid (Yorkshire)		n/a		n/a							ERY
510427.9542	456317.6946	ECC_EN_076	Hedgerow			Local Highway Authority / Private	Natural border between landowners	HDD	2	23						HC_019	ERY
510419.1003	456320.1102	ECC_UT_077	Cable		Telecommunications	Openreach (British Telecommunications)		HDD	2	23						HC_019	ERY
510414.8251	456303.6168	ECC_UT_078	Cable		Underground Cable	Northern Powergrid (Yorkshire)		HDD	2	23						HC_019	ERY
510414.7029	456303.653	ECC_UT_079	Cable		Underground Cable	Northern Powergrid (Yorkshire)		HDD	2	23						HC_019	ERY
510414.5858	456303.6954	ECC_UT_080	Cable		Underground Cable	Northern Powergrid (Yorkshire)		HDD	2	23						HC_019	ERY
510414.5136	456303.701	ECC_UT_081	Pipeline		Water	Yorkshire Water		HDD	2	23						HC_019	ERY
510414.447	456303.7361	ECC_UT_082	Cable		Underground Cable	Northern Powergrid (Yorkshire)		HDD	2	23						HC_019	ERY
510414.3144	456303.7683	ECC_UT_083	Cable		Underground Cable	Northern Powergrid (Yorkshire)		HDD	2	23						HC_019	ERY
510414.1808	456303.7983	ECC_UT_084	Cable		Underground Cable	Northern Powergrid (Yorkshire)		HDD	2	23						HC_019	ERY
510414.0498	456303.8382	ECC_UT_085	Cable		Underground Cable	Northern Powergrid (Yorkshire)		HDD	2	23						HC_019	ERY
510413.7542	456303.9073	ECC_EN_086	Cable		Telecommunications	Openreach (British Telecommunications)		HDD	2	23						HC_019	ERY
510411.4979	456304.6039	ECC_RO_087	Road		Classified Unnumbered	Unknown		HDD	2	23						HC_051	ERY
510403.2718	456307.0443	ECC_EN_091	Hedgerow			Local Highway Authority / Private	Natural border between landowners	HDD	2	23							ERY
510406.7967	456305.9908	ECC_UT_088	Cable		Underground Cable	Northern Powergrid (Yorkshire)		HDD	2	23						HC_019	ERY
510406.6354	456306.0117	ECC_UT_089	Cable		Underground Cable	Northern Powergrid (Yorkshire)		HDD	2	23						HC_019	ERY
510406.5228	456306.0324	ECC_UT_090	Cable		Underground Cable	Northern Powergrid (Yorkshire)		HDD	2	23						HC_019	ERY
510280.179	456333.544	ECC_EN_092	Hedgerow			Private		Open Cut		n/a							ERY
509718.206	456018.3868	ECC_WA_093	Watercourse		Ordinary watercourse (LLFA)	Private / ERYC	Drain at edge of field	Open Cut		n/a						HC_020	ERY
509563.3052	455882.5205	ECC_PW_094	Footpath	Foston on the Wolds Footpath No. 12		ERYC		Open Cut		n/a			To be confirmed				ERY
509405.1523	455729.4965	ECC_EN_095	Hedgerow			Private		Open Cut		n/a							ERY
509113.3395	455487.8475	ECC_EN_096	Trees			Private		HDD	2	24							ERY
509119.5847	455461.6191	ECC_WA_097	Watercourse	River Hull Headwaters (SSSI)	River Hull Headwaters (SSSI) / Main River (EA)	EA		HDD	2	24			1				ERY
509111.6886	455459.5513	ECC_PW_099	Footpath	Foston on the Wolds Footpath No. 12		ERYC		HDD	2	24			To be confirmed				ERY
508982.5491	455425.6168	ECC_UT_100	Cable		Overhead Line	Northern Powergrid (Yorkshire)		HDD	2	25							ERY
509093.0016	454934.5448	ECC_ACC_EN_109	Hedgerow			Local Highway Authority / Private	Natural border between landowners	n/a		n/a							ERY
508935.5178	455413.1802	ECC_EN_101	Hedgerow			Private		HDD	2	25							ERY
508931.0188	455411.9905	ECC_RO_102	Track		Access track to Carr House Farm	Private		HDD	2	25							ERY
508926.3781	455410.7633	ECC_UT_103	Cable		Telecommunications	Openreach (British Telecommunications)		HDD	2	25							ERY
508616.6766	455328.8678	ECC_EN_104	Hedgerow			Private		HDD	2	26						HC_022	ERY
508613.4139	455328.005	ECC_WA_106	Watercourse	White Dike	Main River (EA)	EA		HDD	2	27			1			HC_022	ERY
508369.396	455187.787	ECC_UT_107	Cable		Overhead Line	Northern Powergrid (Yorkshire)		HDD	2	28						HC_023	ERY

508365.2404	455184.4763	ECC_WA_108	Watercourse	Nafferton Drain	Ordinary watercourse (IDB maintained drain)	Beverley and North Holderness IDB		HDD	2	28		1	HC_023		ERY
508097.4397	454913.3136	ECC_EN_110	Hedgerow			Local Highway Authority / Unknown	Natural border between landowners	HDD	2	29			HC_017		ERY
508090.8251	454909.3192	ECC_UT_111	Cable		Underground Cable	Northern Powergrid (Yorkshire)		HDD	2	29			HC_024	AP_007	ERY
508090.7376	454909.2664	ECC_UT_112	Cable		Underground Cable	Northern Powergrid (Yorkshire)		HDD	2	29			HC_024	AP_007	ERY
508090.6063	454909.1871	ECC_UT_113	Cable		Underground Cable	Northern Powergrid (Yorkshire)		HDD	2	29			HC_024	AP_007	ERY
508090.4926	454909.1184	ECC_UT_114	Cable		Underground Cable	Northern Powergrid (Yorkshire)		HDD	2	29			HC_024	AP_007	ERY
508090.3789	454909.0498	ECC_UT_115	Cable		Underground Cable	Northern Powergrid (Yorkshire)		HDD	2	29			HC_024	AP_007	ERY
508090.2476	454908.9705	ECC_UT_116	Cable		Underground Cable	Northern Powergrid (Yorkshire)		HDD	2	29			HC_024	AP_007	ERY
508090.1601	454908.9177	ECC_UT_117	Cable		Underground Cable	Northern Powergrid (Yorkshire)		HDD	2	29			HC_024	AP_007	ERY
508089.5086	454908.5243	ECC_UT_118	Pipeline		Water	Yorkshire Water		HDD	2	29			HC_024	AP_007	ERY
508085.567	454906.1441	ECC_RO_119	B Road	B1249		Local Highway Authority		HDD	2	29			HC_054	AP_020	ERY
508080.018	454902.7932	ECC_EN_120	Hedgerow			Local Highway Authority / Unknown	Natural border between landowners	HDD	2	29			HC_017		ERY
507851.4235	454778.3755	ECC_EN_121	Hedgerow			Unknown		Open Cut		n/a			HC_017		ERY
508005.5146	454634.5393	ECC_ACC_WA_122	Watercourse	Nafferton Drain	Ordinary watercourse (IDB maintained drain)	Beverley and North Holderness IDB		Bridge / Culvert		n/a		1			ERY
507664.1844	454410.167	ECC_EN_123	Hedgerow			Private		Open Cut		n/a					ERY
507663.3244	454408.5065	ECC_UT_124	Cable		Overhead Line	Northern Powergrid (Yorkshire)		Open Cut		n/a					ERY
507617.623	454308.0597	ECC_EN_125	Hedgerow			Private		HDD	2	30			HC_025		ERY
507615.696	454303.5479	ECC_EN_126	Trees			Private		HDD	2	30			HC_025		ERY
507613.5714	454299.4462	ECC_WA_127	Watercourse	Nafferton Drain	Ordinary watercourse (IDB maintained drain)	Beverley and North Holderness IDB		HDD	2	30		1	HC_025		ERY
507541.5101	454221.0074	ECC_UT_129	Cable		Overhead Line	Northern Powergrid (Yorkshire)		HDD	2	31					ERY
507502.7679	454211.0557	ECC_PW_130	Bridleway	Foston on the Wolds Bridleway No. 9		ERYC		HDD	2	31	To be confirmed				ERY
507488.673	454207.4352	ECC_WA_131	Watercourse	Driffield Navigation Canal	Main River (EA)	EA		HDD	2	31		1			ERY
507381.7495	454179.9698	ECC_EN_132	Hedgerow			Private		Open Cut		n/a					ERY
507144.1053	454118.9263	ECC_UT_133	Cable		Underground Cable	Northern Powergrid (Yorkshire)		HDD / Open Cut	2	32					ERY
507144.0043	454118.8798	ECC_UT_134	Cable		Underground Cable	Northern Powergrid (Yorkshire)		HDD / Open Cut	2	32					ERY
507143.9081	454118.8757	ECC_UT_135	Cable		Underground Cable	Northern Powergrid (Yorkshire)		HDD / Open Cut	2	32					ERY
506860.5467	453737.6515	ECC_PW_136	Bridleway	Foston on the Wolds Bridleway No. 6		ERYC		Open Cut		n/a	To be confirmed		HC_026		ERY
506753.7273	453444.2475	ECC_EN_137	Hedgerow			Private	Natural border between landowners	Open Cut		n/a			HC_019		ERY
506627.474	452925.3971	ECC_WA_138	Watercourse	Nafferton Drain	Ordinary watercourse (IDB maintained drain)	Beverley and North Holderness IDB		HDD	2	33		1			ERY
506625.2334	452914.2161	ECC_EN_139	Trees			Private		HDD	2	33					ERY
506620.3811	452892.2464	ECC_WA_140	Watercourse	Foston Beck / Lowthorpe Beck / Kelk Beck	River Hull Headwaters (SSSI) / Main River (EA)	EA		HDD	2	33		1			ERY
506550.1093	452558.1056	ECC_UT_141	Cable		Overhead Line	Northern Powergrid (Yorkshire)		Open Cut		n/a					ERY
506308.5304	451936.5467	ECC_EN_142	Hedgerow			Local Highway Authority / Private	Natural border between landowners	HDD	2	34			HC_019	AP_006	ERY
506305.5626	451934.3584	ECC_RO_144	Road	Rotsea Lane	Unclassified	Unknown		HDD / Open Cut	2	34					ERY
506298.9959	451929.5165	ECC_EN_146	Hedgerow			Local Highway Authority / Private	Natural border between landowners	HDD	2	34			HC_024	AP_007	ERY
506302.2089	451931.8856	ECC_UT_145	Cable		Telecommunications	Openreach (British Telecommunications)		HDD	2	34			HC_027	AP_010	ERY
505989.9543	451615.9322	ECC_WA_147	Watercourse	Rotsea Drain	Ordinary watercourse (IDB maintained drain)	Beverley and North Holderness IDB		HDD	2	35		1	HC_028		ERY
505990.5771	451612.0471	ECC_EN_149	Hedgerow			Private		HDD	2	35			HC_028		ERY

505987.4013	451602.9376	ECC_PW_150	Footpath	Hutton Cranswick Footpath No. 10		ERYC		HDD	2	35	To be confirmed		HC_028		ERY
505682.7392	450828.3738	ECC_EN_151	Hedgerow			Private		Open Cut		n/a					ERY
505579.7492	450628.6449	ECC_WA_152	Watercourse	Scurf Dike	Main River (EA)	EA		HDD	2	36		1	HC_029		ERY
505575.7195	450616.2781	ECC_PW_153	Footpath	Watton Footpath No. 18		ERYC		HDD	2	36	To be confirmed		HC_029		ERY
505475.4518	450258.2151	ECC_UT_154	Cable		Overhead Line	National Grid	Identified from Aerial, not in utility data	Open Cut		n/a					ERY
505214.2121	449801.7153	ECC_UT_155	Cable		Overhead Line	Northern Powergrid (Yorkshire)		Open Cut		n/a					ERY
505135.7193	449748.8449	ECC_WA_156	Watercourse		Ordinary watercourse (LLFA)	Private / ERYC	Drain at edge of field	HDD	2	37			HC_030		ERY
505134.7206	449748.1719	ECC_EN_157	Hedgerow			Private	Natural border between landowners	HDD	2	37			HC_030		ERY
505133.9826	449747.6747	ECC_UT_158	Cable		Telecommunications	Openreach (British Telecommunications)		HDD	2	37			HC_030		ERY
505129.8491	449744.8895	ECC_RO_159	Road		Unclassified	Unknown Owner		HDD	2	37			HC_030		ERY
505121.8765	449739.5176	ECC_EN_160	Hedgerow			Private	Natural border between landowners	HDD	2	37			HC_030		ERY
504908.7655	449619.1283	ECC_WA_161	Watercourse		Ordinary watercourse (LLFA)	Private / ERYC	Drain at edge of field	Open Cut		n/a			HC_031		ERY
504905.6538	449617.5012	ECC_EN_162	Hedgerow			Private		Open Cut		n/a			HC_031		ERY
504867.1192	449556.9358	ECC_EN_163	Tree			Private		HDD	2	38			HC_032		ERY
504821.2786	449552.214	ECC_WA_164	Watercourse	Kirby Drain	Ordinary watercourse (IDB maintained drain)	Beverley and North Holderness IDB		HDD	2	38		1	HC_032		ERY
504810.2359	449542.796	ECC_PW_165	Bridleway	Watton Bridleway No. 13		Private		HDD	2	38	To be confirmed		HC_032		ERY
504516.0095	448959.8022	ECC_EN_167	Hedgerow			Local Highway Authority / Private	Natural border between landowners	HDD	2	39			HC_024	AP_007	ERY
504516.2162	448960.9026	ECC_UT_166	Cable		Telecommunications	Openreach (British Telecommunications)		HDD	2	39			HC_033	AP_011	ERY
504515.8565	448958.9875	ECC_UT_168	Cable		Telecommunications	Openreach (British Telecommunications)		HDD	2	39			HC_033	AP_011	ERY
504515.2023	448955.504	ECC_RO_169	Road	Carr Lane	Unclassified	Unknown		HDD	2	39					ERY
504514.5127	448951.8319	ECC_EN_170	Trees			n/a	Natural border between landowners	HDD	2	39			HC_024	AP_007	ERY
504514.1364	448949.8286	ECC_WA_171	Watercourse		Ordinary watercourse (LLFA)	Local Highway Authority / Private	Natural border between landowners; Drain at edge of field	HDD	2	39					ERY
504541.7791	448943.1881	ECC_EN_172	Tree			n/a	Natural border between landowners	HDD	2	39					ERY
504472.7413	448745.4898	ECC_WA_173	Watercourse	Watton Beck	Main River (EA)	EA		HDD	2	39		1	HC_034		ERY
504157.6724	448474.0264	ECC_EN_174	Hedgerow			Private		Open Cut		n/a			HC_035		ERY
504155.466	448472.4789	ECC_WA_175	Watercourse		Ordinary watercourse (LLFA)	Private / ERYC	Drain at edge of field	Open Cut		n/a			HC_035		ERY
504019.5646	448377.1612	ECC_EN_176	Trees			n/a	Natural border between landowners	HDD	2	40			HC_027	AP_010	ERY
504018.1163	448376.1454	ECC_UT_177	Cable		Overhead Line	Northern Powergrid (Yorkshire)		HDD	2	40			HC_036	AP_012	ERY
504011.2708	448371.3442	ECC_UT_179	Cable		Telecommunications	Openreach (British Telecommunications)		HDD	2	40			HC_036	AP_012	ERY
504014.5103	448373.6163	ECC_RO_178	Road	Wilfholme Road	Classified Unnumbered	Unknown		HDD	2	40					ERY
504007.4688	448368.6776	ECC_EN_180	Hedgerow			Local Highway Authority / Private	Natural border between landowners	HDD	2	40			HC_027	AP_010	ERY
504005.4447	448367.2579	ECC_WA_181	Watercourse	Kilwick Arm	Ordinary watercourse (IDB maintained drain)	Beverley and North Holderness IDB		HDD	2	40		1	HC_036	AP_012	ERY
503806.8162	448069.0376	ECC_UT_182	Cable		Overhead Line	Northern Powergrid (Yorkshire)		n/a		n/a			HC_037		ERY
503766.7963	448005.0378	ECC_WA_183	Watercourse	Beswick New Cut	Ordinary watercourse (IDB maintained drain)	Beverley and North Holderness IDB		HDD	2	42		1	HC_037		ERY
503580.1068	447801.8062	ECC_WA_184	Watercourse		Ordinary watercourse (LLFA)	Private / ERYC	Drain at edge of field	Open Cut		n/a			HC_038		ERY
503529.0832	447703.3625	ECC_RO_185	Road	Barfhill Causeway	Unclassified	Unknown Owner		HDD	2	43			HC_039	AP_013	ERY
503526.5979	447699.6217	ECC_EN_186	Hedgerow			Private		HDD	2	43			HC_039	AP_013	ERY
503427.8719	447579.8607	ECC_EN_187	Hedgerow			Private		Open Cut		n/a					ERY
503122.0607	447566.0514	ECC_WA_188	Watercourse		Ordinary watercourse (LLFA)	Private / ERYC	Drain at edge of field	Open Cut		n/a			HC_040		ERY
503120.129	447565.9642	ECC_EN_189	Hedgerow			Private		Open Cut		n/a			HC_040		ERY

502820.3961	447552.4294	ECC_EN_190	Hedgerow			Private		Open Cut		n/a			HC_041		ERY
502814.4399	447552.1604	ECC_PW_191	Bridleway	Beswick Bridleway No. 23		ERYC		Open Cut		n/a	To be confirmed		HC_041		ERY
502579.9833	447541.5733	ECC_UT_192	Cable		Track Electricity Cables	Network Rail		HDD	2	44					ERY
502576.8713	447541.4328	ECC_UT_193	Cable		Track Electricity Cables	Network Rail		HDD	2	44					ERY
502574.6597	447541.3329	ECC_RA_194	Railway			Network Rail		HDD	2	44					ERY
502573.3269	447541.2727	ECC_UT_195	Cable		Track Electricity Cables	Network Rail		HDD	2	44					ERY
502566.8644	447540.9809	ECC_EN_196	Hedgerow			Local Highway Authority / Private	Natural border between landowners	HDD	2	44			HC_027	AP_010	ERY
502330.9891	447378.7632	ECC_EN_197	Hedgerow			Private		Open Cut		n/a					ERY
502217.8215	447236.7414	ECC_EN_198	Hedgerow			Private		Open Cut		n/a					ERY
502021.6801	447006.705	ECC_EN_199	Hedgerow			Private		Open Cut		n/a					ERY
502016.1147	446997.3474	ECC_UT_200	Cable		Overhead Line	Northern Powergrid (Yorkshire)		Open Cut		n/a					ERY
501938.7273	446933.9379	ECC_UT_201	Cable		Overhead Line	Northern Powergrid (Yorkshire)		Open Cut		n/a			HC_043		ERY
501858.9184	446884.553	ECC_WA_202	Watercourse		Ordinary watercourse (LLFA)	Private / ERYC	Drain at edge of field	Open Cut		n/a			HC_043	AP_014	ERY
501698.3572	446787.5315	ECC_UT_203	Cable		Telecommunications	Openreach (British Telecommunications)		HDD	2	45					ERY
501686.5012	446777.8631	ECC_UT_204	Pipeline		Water	Yorkshire Water		HDD	2	45					ERY
501668.096	446774.235	ECC_RO_205	Road	Station Road		Unknown		HDD	2	45					ERY
501460.68	446720.89	ECC_LC_UT_206	Pipeline		Water	Yorkshire Water		n/a		n/a			HC_044	AP_015	ERY
501497.5822	446660.962	ECC_EN_207	Hedgerow			Local Highway Authority / Private	Natural border between landowners	HDD	2	46			HC_044		ERY
501494.7938	446659.2365	ECC_UT_208	Cable		Telecommunications	Openreach (British Telecommunications)		HDD	2	46			HC_044		ERY
501492.4138	446657.7638	ECC_UT_209	Cable		Telecommunications	KCOM Group		HDD	2	46			HC_044		ERY
501489.0209	446655.6643	ECC_RO_210	Road	A164	A Road	Unknown		HDD	2	46					ERY
501483.3687	446651.5493	ECC_UT_211	Pipeline		Water Pipeline	Yorkshire Water		HDD	2	46			HC_044		ERY
501478.3223	446649.0441	ECC_EN_212	Hedgerow			Local Highway Authority / Unknown	Natural border between landowners	HDD	2	46			HC_027	AP_010	ERY
501362.6552	446752.1094	ECC_LC_PW_205	Footpath	Lockington Footpath No. 8		ERYC		n/a		n/a	To be confirmed			AP_015	ERY
501120.9157	446216.7374	ECC_EN_213	Trees			n/a	Natural border between landowners	HDD	2	47			HC_033	AP_011	ERY
501090.2858	446212.1602	ECC_WA_214	Watercourse	Bryan Mills Beck	Designated LWS / Main River (EA and IDB Maintained)	EA		HDD	2	47		1			ERY
501053.01	446034.67	ECC_EN_215	Hedgerow			Private		Open Cut		n/a					ERY
500939.5154	445981.0433	ECC_EN_216	Hedgerow			Private		Open Cut		n/a					ERY
500790.1312	445868.0943	ECC_PW_217	Footpath	Leconfield Footpath No. 1		ERYC		Open Cut		n/a	To be confirmed				ERY
500786.5477	445864.5101	ECC_EN_218	Hedgerow			Private		Open Cut		n/a					ERY
500652.3704	445730.3068	ECC_PW_219	Bridleway	Leconfield Bridleway No. 2		ERYC		Open Cut		n/a	To be confirmed		HC_045		ERY
500451.3719	445458.7169	ECC_WA_221	Watercourse	Bealey's Beck (Lockington) / Scorborough Beck	Ordinary watercourse (LLFA)	Private	Natural border between landowners, Candidate LWS	HDD	2	48			HC_033	AP_011	ERY
500451.827	445462.8841	ECC_EN_220	Trees			Private		HDD	2	48			HC_046		ERY
500322.3146	445028.4429	ECC_RO_222	Track		Farm Access Track	Private		Open Cut		n/a					ERY
500274.7569	444904.9927	ECC_EN_223	Hedgerow			Private		Open Cut		n/a					ERY
500270.5586	444898.1672	ECC_PW_224	Footpath	Leconfield Footpath No. 7		ERYC		Open Cut		n/a	To be confirmed				ERY
500401.3225	444632.3173	ECC_PW_225	Footpath	Leconfield Footpath No. 7		ERYC		Open Cut		n/a	To be confirmed		HC_047		ERY
500406.8161	444614.5728	ECC_UT_226	Cable		Telecommunications	Openreach (British Telecommunications)		HDD	2	49			HC_047		ERY
500393.5774	444607.2811	ECC_UT_227	Cable		Telecommunications	Openreach (British Telecommunications)		HDD	2	49			HC_047		ERY
500372.3084	444593.309	ECC_UT_228	Cable		Telecommunications	Openreach (British Telecommunications)		HDD	2	49			HC_047		ERY
500372.9467	444591.2426	ECC_PW_229	Bridleway	Leconfield Bridleway No. 9		ERYC		HDD	2	49	To be confirmed		HC_047		ERY
500373.2672	444590.2049	ECC_RO_230	Track		Private Access Road	Private		HDD	2	49			HC_047		ERY
500373.7225	444588.7308	ECC_UT_231	Cable		Overhead Line	Northern Powergrid (Yorkshire)		HDD	2	49			HC_047		ERY
500415.8296	444434.2753	ECC_PW_232	Footpath	Leconfield Footpath No. 10		ERYC		Open Cut		n/a	To be confirmed				ERY
500433.997	444334.3696	ECC_PW_233	Footpath	Leconfield Footpath No. 11		ERYC		Open Cut		n/a	To be confirmed				ERY

500579.9729	444291.8828	ECC_ACC_UT_234	Cable		Telecommunications	Openreach (British Telecommunications)		n/a		n/a				AP_017	ERY
500626.3325	444290.5513	ECC_ACC_UT_235	Pipeline	Yorkshire Water	Water	Yorkshire Water		n/a		n/a				AP_017	ERY
500409.7785	444081.9358	ECC_PW_236	Bridleway	Leconfield Bridleway No. 12		ERYC		Open Cut		n/a	To be confirmed		HC_048		ERY
500407.5296	444058.4956	ECC_EN_237	Hedgerow			Private		Open Cut		n/a			HC_048		ERY
500399.4996	443974.7974	ECC_EN_238	Hedgerow			Private		Open Cut		n/a					ERY
500494.1094	443738.8117	ECC_EN_239	Trees			Private		Open Cut		n/a					ERY
500456.8617	443349.1515	ECC_EN_240	Hedgerow			Local Highway Authority / Private	Natural border between landowners	HDD	2	50			HC_033	AP_011	ERY
500456.3306	443345.8692	ECC_UT_241	Pipeline		Water	Yorkshire Water		HDD	2	50			HC_049		ERY
500454.8426	443337.9121	ECC_UT_243	Cable		Telecommunications	Openreach (British Telecommunications)		HDD	2	50			HC_049		ERY
500454.5227	443336.9433	ECC_UT_244	Pipeline		Gas	Northern Gas Networks		HDD	2	50			HC_049		ERY
500455.7107	443343.1436	ECC_RO_242	Road	Miles Lane	Classified Unnumbered	Unknown		HDD	2	50					ERY
500279.1275	442939.5454	ECC_WA_245	Watercourse		Ordinary watercourse (LLFA)	Private / ERYC	Drain at edge of field	Open Cut		n/a			HC_050	AP_018	ERY
500209.7577	442937.3945	ECC_ACC_UT_247	Cable		Telecommunications	Openreach (British Telecommunications)		n/a		n/a			HC_050	AP_018	ERY
500302.7389	442938.5433	ECC_EN_246	Tree			Private		Open Cut		n/a			HC_050	AP_018	ERY
500331.0522	442563.0905	ECC_UT_248	Cable		Telecommunications	Openreach (British Telecommunications)		HDD	2	51			HC_051		ERY
500331.9028	442556.9243	ECC_UT_250	Cable		Overhead Line	Northern Powergrid (Yorkshire)		HDD	2	51			HC_051		ERY
500332.6417	442551.5673	ECC_EN_251	Hedgerow			Local Highway Authority / Private	Natural border between landowners	HDD	2	51			HC_051		ERY
500331.6117	442559.0343	ECC_RO_249	Road	Rose Lane	Unclassified	Unknown		HDD	2	51					ERY
500323.6353	442377.4262	ECC_EN_256	Hedgerow	Raventhorpe Embankment	Designated LWS	Private		HDD	2	52					ERY
500321.6127	442371.8253	ECC_PW_257	Footpath	Cherry Burton Footpath No. 2	Dismantled Railway	ERYC	Dismantled Railway	HDD	2	52	To be confirmed				ERY
500319.3049	442365.4344	ECC_EN_258	Trees			Private		HDD	2	52					ERY
500318.4791	442363.1475	ECC_UT_259	Cable		Overhead Line	Northern Powergrid (Yorkshire)		HDD	2	52					ERY
500314.3238	442351.6406	ECC_UT_260	Cable		Underground Cable	Northern Powergrid (Yorkshire)		HDD	2	52					ERY
500268.915	442228.9397	ECC_UT_264	Cable		Underground Cable	Northern Powergrid (Yorkshire)		HDD / Open Cut	2	53					ERY
500238.337	441976.8557	ECC_PW_265	Footpath	Cherry Burton Footpath No. 3		ERYC		Open Cut		n/a	To be confirmed		HC_052		ERY
500242.8354	441970.9815	ECC_WA_266	Watercourse		Ordinary watercourse (LLFA)	Private / ERYC	Drain at edge of field	Open Cut		n/a			HC_052		ERY
500649.6288	441503.6685	ECC_RO_267	Track		Access track to property	Private		HDD	2	54			HC_053		ERY
500653.2375	441498.9561	ECC_UT_268	Cable		Telecommunications	Openreach (British Telecommunications)		HDD	2	54			HC_053		ERY
500647.9593	441178.1706	ECC_EN_269	Hedgerow			Local Highway Authority / Private	Natural border between landowners	HDD	2	55			HC_054	AP_020	ERY
500647.7084	441176.1451	ECC_UT_270	Cable		Telecommunications	KCOM Group		HDD	2	55			HC_054	AP_020	ERY
500647.6768	441175.8899	ECC_UT_271	Pipeline		Gas	Northern Gas Networks		HDD	2	55			HC_054	AP_020	ERY
500647.4571	441174.1155	ECC_PW_272	Cycleway	Yorkshire Wolds	Sustrans National Route	Sustrans		HDD	2	55	To be confirmed		HC_054	AP_020	ERY
500646.5247	441166.5863	ECC_UT_273	Pipeline		Water	Yorkshire Water		HDD	2	55			HC_054	AP_020	ERY
500646.2538	441164.3989	ECC_RO_274	Road	A1035	A Road	Unknown		HDD	2	55					ERY
500645.0543	441154.7121	ECC_UT_275	Pipeline		Water	Yorkshire Water		HDD	2	55			HC_054	AP_020	ERY
500644.8031	441152.6836	ECC_EN_276	Hedgerow			Local Highway Authority / Private	Natural border between landowners	HDD	2	55			HC_054	AP_020	ERY
500613.4066	440853.8275	ECC_UT_277	Cable		Overhead Line	Northern Powergrid (Yorkshire)		Open Cut		n/a					ERY
500613.2039	440852.7534	ECC_EN_278	Hedgerow			Private		Open Cut		n/a					ERY
500621.7865	440826.339	ECC_EN_279	Hedgerow			Private		Open Cut		n/a					ERY
500251.9768	440462.9605	ECC_EN_280	Hedgerow			Private		Open Cut		n/a			HC_033	AP_011	ERY
500294.0465	440308.8924	ECC_EN_281	Hedgerow			Private		Open Cut		n/a					ERY
500281.8842	439999.9274	ECC_UT_282	Cable		Overhead Line	Northern Powergrid (Yorkshire)		Open Cut		n/a					ERY
500322.523	439655.96	ECC_EN_283	Hedgerow			Private		HDD	2	56					ERY
500355.921	439649.647	ECC_UT_284	Cable		Telecommunications	KCOM Group		HDD	2	56					ERY
500327.4366	439642.9731	ECC_UT_285	Cable		Telecommunications	Openreach (British Telecommunications)		HDD	2	56					ERY
500332.0904	439636.7026	ECC_RO_286	Road	York Road	Classified Unnumbered	Unknown		HDD	2	56					ERY
500351.5671	439629.5945	ECC_UT_287	Pipeline		Gas	Northern Gas Networks		HDD	2	56					ERY
500347.5183	439625.1336	ECC_EN_288	Hedgerow			Private		HDD	2	56					ERY

500408.8498	439466.0107	ECC_EN_289	Hedgerow			Private		Open Cut		n/a			HC_033	AP_011	ERY
500589.9097	438950.6255	ECC_EN_290	Hedgerow			Local Highway Authority / Private	Natural border between landowners	HDD	2	57					ERY
500592.2402	438906.2144	ECC_RO_291	Road	A1079	A Road	Unknown		HDD	2	57			HC_057		ERY
500594.5507	438862.1869	ECC_EN_292	Hedgerow			Local Highway Authority / Private	Natural border between landowners	HDD	2	57			HC_036	AP_012	ERY
500676.329	438551.624	ECC_EN_293	Hedgerow			Local Highway Authority / Private	Natural border between landowners	HDD	2	58			HC_036	AP_012	ERY
500682.023	438540.0172	ECC_UT_295	Cable		Telecommunications	KCOM Group		HDD	2	58					ERY
500680.3322	438543.4638	ECC_RO_294	Road	Newbald Road	Classified Unnumbered	Unknown		HDD	2	58			HC_058		ERY
500684.1495	438535.6826	ECC_EN_296	Hedgerow			Local Highway Authority / Private	Natural border between landowners	HDD	2	58			HC_036	AP_012	ERY
500830.2805	438255.349	ECC_EN_297	Hedgerow			Private		Open Cut		n/a					ERY
500828.146	437986.6798	ECC_EN_298	Hedgerow			Private		Open Cut		n/a					ERY
500911.9161	437639.6997	ECC_EN_299	Hedgerow			Local Highway Authority / Private	Natural border between landowners	HDD	2	59			HC_057		ERY
500912.1357	437638.7899	ECC_UT_300	Cable		Telecommunications	KCOM Group		HDD	2	59			HC_057		ERY
500912.3869	437637.7496	ECC_UT_301	Cable		Telecommunications	KCOM Group		HDD	2	59			HC_057		ERY
500912.5221	437637.1897	ECC_UT_302	Pipeline		Water	Yorkshire Water		HDD	2	59			HC_057		ERY
500912.9229	437635.5295	ECC_UT_303	Cable		Telecommunications	KCOM Group		HDD	2	59			HC_057		ERY
500915.0068	437626.8976	ECC_PW_305	Cycleway	Yorkshire Wolds	Sustrans National Route	Sustrans		HDD	2	59	To be confirmed		HC_057		ERY
500913.8614	437631.642	ECC_RO_304	Road	Broadgate / B1230	B Road	Unknown		HDD	2	59			HC_059		ERY
500915.2494	437625.8931	ECC_UT_306	Pipeline		Water	Yorkshire Water		HDD	2	59			HC_057		ERY
500915.4238	437625.1707	ECC_UT_307	Cable		Overhead Line	Northern Powergrid (Yorkshire)		HDD	2	59			HC_057		ERY
500915.4474	437625.0727	ECC_UT_308	Cable		Overhead Line	Northern Powergrid (Yorkshire)		HDD	2	59			HC_057		ERY
500915.4711	437624.9747	ECC_UT_309	Cable		Overhead Line	Northern Powergrid (Yorkshire)		HDD	2	59			HC_057		ERY
500925.5407	437585.3077	ECC_UT_310	Cable	Creyke Beck to Thornton	Overhead Line	National Grid		HDD	2	59			HC_057		ERY
500931.7601	437581.4623	ECC_UT_311	Pipeline	Unknown	Possible duplication of the National Grid Overhead line that crosses here	Unknown (formerly assumed Cadent Gas)		HDD	2	59			HC_057		ERY
500956.9431	437478.5342	ECC_UT_312	Cable		Overhead Line	Northern Powergrid (Yorkshire)		Open Cut		n/a					ERY
501003.4262	437318.9324	ECC_UT_313	Pipeline		Sewer	Yorkshire Water		HDD	2	60					ERY
501004.426	437314.2676	ECC_EN_314	Trees			Private		HDD	2	60					ERY
501001.299	437296.8626	ECC_EN_315	Hedgerow			Private		HDD	2	60					ERY
501227.6505	436814.2616	ECC_EN_316	Hedgerow			Private		Open Cut		n/a					ERY
501222.3588	436795.4762	ECC_EN_317	Hedgerow			Private		Open Cut		n/a					ERY
501232.4492	436790.6936	ECC_PW_318	Footpath	Walkington Footpath No. 9 (Moor Lane)		ERYC		Open Cut		n/a	To be confirmed				ERY
501231.8714	436785.1085	ECC_EN_319	Hedgerow		Designated LWS	Private		Open Cut		n/a					ERY
501210.7368	436686.1189	ECC_UT_320	Pipeline	TSEP	Gas	INEOS TSEP		HDD	2	61					ERY
501136.932	436559.8566	ECC_EN_321	Hedgerow			Private		Open Cut		n/a					ERY
501128.4448	436377.5863	ECC_UT_322	Pipeline	FM29 Ganstead to Asselby	Gas	National Grid		HDD	2	62					ERY
501174.4435	436319.2544	ECC_EN_323	Hedgerow			Private		Open Cut		n/a					ERY
501426.1407	435797.7592	ECC_EN_324	Hedgerow			Local Highway Authority / Private	Natural border between landowners	HDD	2	63			HC_058		ERY
501430.4673	435792.1543	ECC_RO_325	Road	Coppleflat Lane	Classified Unnumbered	Unknown		HDD	2	63			HC_059		ERY
501438.3909	435789.8682	ECC_UT_326	Pipeline		Water	Yorkshire Water		HDD	2	63			HC_058		ERY
501434.1742	435787.3521	ECC_EN_327	Hedgerow			Local Highway Authority / Private	Natural border between landowners	HDD	2	63			HC_058		ERY
501513.7432	435664.0291	ECC_UT_328	Cable		Overhead Line	Northern Powergrid (Yorkshire)		Open Cut		n/a					ERY
501534.8524	435615.1372	ECC_EN_329	Trees			Private		Open Cut		n/a					ERY
501762.4202	435459.3885	ECC_EN_330	Hedgerow			Local Highway Authority / Private	Natural border between landowners	HDD	2	64					ERY
501774.9467	435458.2873	ECC_RO_331	Road	Coppleflat Lane	Unclassified	Unknown		HDD	2	64					ERY
501781.1458	435457.7423	ECC_EN_332	Hedgerow			Local Highway Authority / Private	Natural border between landowners	HDD	2	64			HC_059		ERY
502153.3256	435424.9723	ECC_EN_333	Hedgerow			Local Highway Authority / Private	Natural border between landowners	HDD	2	65			HC_044		ERY
502158.6998	435424.4981	ECC_UT_334	Pipeline		Water	Yorkshire Water		HDD	2	65					ERY
502162.7547	435424.1403	ECC_RO_335	Road	A164	A Road	Unknown		HDD	2	65					ERY
502167.5264	435423.8577	ECC_UT_336	Cable		Telecommunications	KCOM Group		HDD	2	65					ERY
502168.2892	435423.5828	ECC_UT_337	Cable		Telecommunications	KCOM Group		HDD	2	65					ERY

502170.9557	435423.3293	ECC_UT_338	Pipeline		Water	Yorkshire Water		HDD	2	65							ERY	
502175.1602	435422.948	ECC_UT_339	Pipeline		Water	Yorkshire Water		HDD	2	65								ERY
502327.2035	435253.6386	ECC_EN_340	Trees			Unknown Owner		HDD / Open Cut	2	66								ERY
502343.8933	435189.5637	ECC_UT_341	Cable		Overhead Line	Northern Powergrid (Yorkshire)		HDD / Open Cut	2	67								ERY
502382.0882	435042.9277	ECC_UT_342	Cable		Telecommunications	KCOM Group		HDD / Open Cut	2	68								ERY
502450.3073	434920.7773	ECC_UT_343	Pipeline		Underground Cable	Northern Gas Networks		HDD / Open Cut	2	69								ERY
502465.2518	434898.0653	ECC_EN_344	Hedgerow			Private		HDD / Open Cut	2	69								ERY
502694.0204	434772.8083	ECC_UT_345	Cable / Pipeline		Overhead Line / Pipeline	National Grid 400kV / Cadent Gas	Cadent ownership to be confirmed in additional to Overhead Line	HDD / Open Cut	2	70								ERY
502705.6781	434769.736	ECC_EN_347	Hedgerow			Private		HDD / Open Cut	2	70								ERY
502706.1452	434741.7411	ECC_EN_348	Trees			Unknown Owner		HDD / Open Cut	2	70								ERY
503067.1167	434736.4822	ECC_EN_349	Trees			Unknown Owner		HDD / Open Cut	2	71								ERY
503266.0597	434727.8804	ECC_EN_350	Hedgerow			Private		HDD / Open Cut	2	72								ERY
503655.2206	434731.0702	ECC_EN_351	Hedgerow			Private		HDD / Open Cut	2	73								ERY
503733.6462	434747.1118	ECC_UT_352	Cable		Telecommunications	KCOM Group		HDD / Open Cut	2	73								ERY
503738.0782	434748.0184	ECC_RO_353	Road			Unknown Owner		HDD / Open Cut	2	73								ERY
503807.4835	434761.7656	ECC_UT_354	Cable		Overhead Line	Northern Powergrid (Yorkshire)		HDD / Open Cut	2	73								ERY
503877.5888	434869.7322	ECC_EN_355	Hedgerow			Private		HDD / Open Cut	2	74								ERY
503916.1672	434936.8872	ECC_UT_356	Cable / Pipeline		Overhead Line / Pipeline	National Grid 400kV / Cadent Gas	Cadent ownership to be confirmed in additional to Overhead Line	HDD / Open Cut	2	75								ERY
503915.1833	434658.8477	ECC_ACC_UT_357	Cable		Overhead Line	Northern Powergrid (Yorkshire)		n/a		n/a								ERY
504035.0261	434314.7982	ECC_ACC_UT_358	Cable		Telecommunications	KCOM Group		n/a		n/a								ERY
504067.2541	434224.8896	ECC_ACC_UT_359	Cable		Telecommunications	KCOM Group		n/a		n/a							AP_031	ERY
503884.3166	435277.7707	SS_EN_360	Trees			Unknown Owner		HDD / Open Cut	2	91								ERY
504017.4023	435170.8788	SS_EN_361	Hedgerow			Private		HDD / Open Cut	2	92								ERY
504135.1421	435012.9223	SS_EN_362	Hedgerow			Private		HDD / Open Cut	2	93								ERY
503698.697	435138.6529	SS_PW_363	Footpath	Skidby Footpath No. 16		ERYC		Permanent Diversion		n/a							Permanent Diversion	ERY
503303.939	435289.784	SS_ACC_UT_366	Cable		Overhead Line	Northern Powergrid (Yorkshire)		n/a		n/a								ERY
503550.0056	435179.9847	SS_UT_369	Cable		Overhead Line	Northern Powergrid (Yorkshire)		Diversion		n/a								ERY
503331.8867	434960.6842	SS_UT_370	Cable	4ZQ Route TWR (002 - 111)	Overhead Line	National Grid		n/a		n/a								ERY
504246.2673	434881.1595	SS_UT_371	Cable / Pipeline		Overhead Line / Pipeline	National Grid 400kV / Cadent Gas	Cadent ownership to be confirmed in additional to Overhead Line	HDD / Open Cut	2	76								ERY
504257.6187	434840.4372	SS_UT_372	Cable		Underground Cable	Northern Powergrid (Yorkshire)		HDD / Open Cut	2	76								ERY
504264.1206	434839.9104	SS_UT_373	Cable		Underground Cable	Northern Powergrid (Yorkshire)		HDD / Open Cut	2	76								ERY
504265.0409	434834.5383	SS_UT_374	Cable		Underground Cable	Northern Powergrid (Yorkshire)		HDD / Open Cut	2	76								ERY
504268.7564	434832.6939	SS_UT_375	Cable		Underground Cable	Northern Powergrid (Yorkshire)		HDD / Open Cut	2	76								ERY
504479.7714	435338.1417	SS_EN_376	Pond			Unknown Owner		HDD / Open Cut	2	87								ERY
504438.2846	435266.8099	SS_EN_377	Trees			Unknown Owner		HDD / Open Cut	2	86								ERY

504641.5502	435124.502	SS_EN_378	Trees			Unknown Owner		HDD / Open Cut	2	84								ERY
504539.532	435224.7746	SS_EN_EN_379	Trees			Unknown Owner		HDD / Open Cut	2	85								ERY
503573.6271	436059.1351	SS_ACC_UT_380	Pipeline		High Pressure Pipeline	INEOS TSEP		n/a		n/a								ERY
503543.0571	435955.4757	SS_ACC_UT_381	Cable / Pipeline		Overhead Line / Pipeline	National Grid 400kV / Cadent Gas	Cadent ownership to be confirmed in additional to Overhead Line	n/a		n/a								ERY
503469.4245	435782.6071	SS_ACC_UT_383	Cable		Overhead Line	Northern Powergrid (Yorkshire)		n/a		n/a								ERY
504266.4639	435311.5933	SS_UT_391	Cable		Underground Cable	Northern Powergrid (Yorkshire)		HDD / Open Cut	2	89								ERY
504635.823	435112.8479	SS_UT_394	Cable		Telecommunications	KCOM Group		HDD / Open Cut	2	84								ERY
504643.9893	435109.9812	SS_UT_395	Cable		Underground Cable	Northern Powergrid (Yorkshire)		HDD / Open Cut	2	84								ERY
504635.2633	435105.9518	SS_UT_396	Cable		Underground Cable	Northern Powergrid (Yorkshire)		HDD / Open Cut	2	84								ERY
504671.867	435090.8857	SS_UT_397	Cable		Telecommunications	KCOM Group		HDD / Open Cut	2	84								ERY
504301.6128	435059.3412	SS_UT_398	Cable / Pipeline		Overhead Line / Pipeline	National Grid 400kV / Cadent Gas	Cadent ownership to be confirmed in additional to Overhead Line	HDD / Open Cut	2	88								ERY
504362.841	435057.7306	SS_UT_400	Cable		Underground Cable	Northern Powergrid (Yorkshire)		HDD / Open Cut	2	88								ERY
504707.4667	435020.373	SS_UT_401	Cable		Underground Cable	Northern Powergrid (Yorkshire)		HDD / Open Cut	2	82								ERY
504689.0219	434918.9156	ECC_GC_EN_402	Trees			Unknown Owner		HDD / Open Cut	2	80								ERY
504684.2594	434743.4965	ECC_GC_EN_403	Trees			Unknown Owner		HDD / Open Cut	2	90								ERY
504773.2742	435074.378	ECC_GC_PW_404	Track			Unknown Owner		HDD / Open Cut	2	83	To be confirmed							ERY
504719.6306	435210.1977	ECC_GC_UT_405	Cable		Overhead Line	Northern Powergrid (Yorkshire)		Open Cut		n/a								ERY
504799.1302	435068.9852	ECC_GC_UT_406	Cable		Underground Cable	KCOM Group		HDD / Open Cut	2	83								ERY
504811.5678	435059.3442	ECC_GC_UT_407	Cable		Underground Cable	Northern Powergrid (Yorkshire)		HDD / Open Cut	2	83								ERY
504798.03	435053.9672	ECC_GC_UT_408	Cable		Underground Cable	Northern Powergrid (Yorkshire)		HDD / Open Cut	2	83								ERY
504786.0173	434994.3285	ECC_GC_UT_409	Cable		Underground Cable	Northern Powergrid (Yorkshire)		HDD / Open Cut	2	81								ERY
504750.9346	434976.0657	ECC_GC_UT_410	Cable / Pipeline		Overhead Line / Pipeline	National Grid 400kV / Cadent Gas	Cadent ownership to be confirmed in additional to Overhead Line	HDD / Open Cut	2	81								ERY
504675.0383	434870.3956	ECC_GC_UT_411	Cable		Underground Cable	Northern Powergrid (Yorkshire)		HDD / Open Cut	2	79								ERY
504680.4733	434847.9249	ECC_GC_UT_412	Cable		Underground Cable	Northern Powergrid (Yorkshire)		HDD / Open Cut	2	79								ERY
504520.2174	434845.8905	ECC_GC_UT_413	Cable		Underground Cable	Northern Powergrid (Yorkshire)		HDD / Open Cut	2	78								ERY
504415.1059	434769.5599	ECC_GC_UT_414	Cable		Underground Cable	Northern Powergrid (Yorkshire)		HDD / Open Cut	2	77								ERY
503319.39	435148.557	SS_ACC_WA_415	Watercourse		Ordinary watercourse (LLFA)	Private / ERYC	Not listed in IDB Drains or Rivers datasets, but evident in OS Mastermap and aerial Imagery; Drain at edge of field	n/a		n/a								ERY



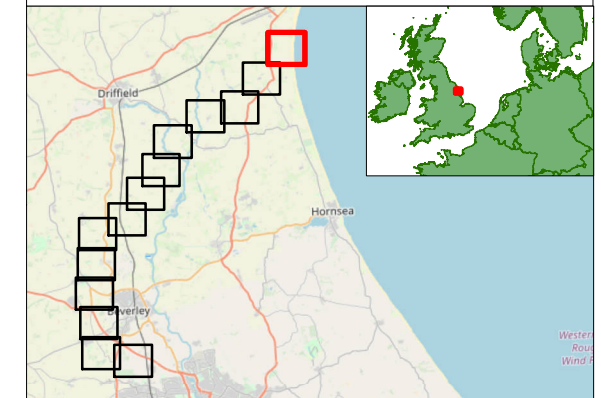
Hornsea Four

Onshore Crossing Schedule

Page 1 of 14

- Crossing Point (Onshore)
 - Access Points, Public Highway
 - Access Points, Haul Road Crossing
 - Indicative Drill Line
 - PEIR Boundary
 - Logistics Compounds
 - Landfall Connection Works
 - Temporary Access
- Utilities Owner**
- Northern Powergrid - (Yorkshire)
 - Openreach - [British Telecommunications]

Restricted



Coordinate system: British National Grid
 Scale@A3: 1:10,000

0 125 250 500 Meters

0 375 750 1,500 Feet

REV	REMARK	DATE
...	First Issue	24/06/2019

Onshore Crossing Schedule
 Document no: HOW040235
 Created by: XDAOO
 Checked by: KIEBE
 Approved by: ANTSA



Licenses:
 Service Layer Credits: © OpenStreetMap (and) contributors, CC-BY-SA, © Imagery © Mapbox, © Mapbox Satellite Imagery, © Ordnance Survey
 © Crown copyright and database rights [2019] Ordnance Survey
 0100031673. All rights reserved.

Date: 24/06/2019 Author: xdao Name: HOW040235_OnshoreCrossingSchedule_20190624

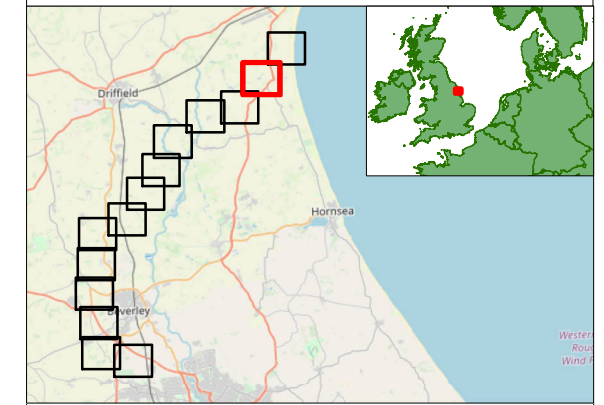
Hornsea Four Onshore Crossing Schedule

Page 2 of 14

- Crossing Point (Onshore)
 - Access Points, Public Highway
 - Access Points, Haul Road Crossing
 - Indicative Drill Line
 - PEIR Boundary
 - Logistics Compounds
- Utilities Owner**
- Cadent Gas
 - Northern Powergrid - (Yorkshire)
 - Openreach - [British Telecommunications]
 - Yorkshire Water - Water



Restricted



Coordinate system: British National Grid
 Scale@A3: 1:10,000

0 125 250 500 Meters

0 375 750 1,500 Feet

REV	REMARK	DATE
...	First Issue	24/06/2019

Onshore Crossing Schedule
 Document no: HOW040235
 Created by: XDAO0
 Checked by: KIEBE
 Approved by: ANTSA



Licenses:
 Service Layer Credits: © OpenStreetMap (and) contributors, CC-BY-SA.
 © Crown copyright and database rights [2019] Ordnance Survey
 0100031673. All rights reserved.

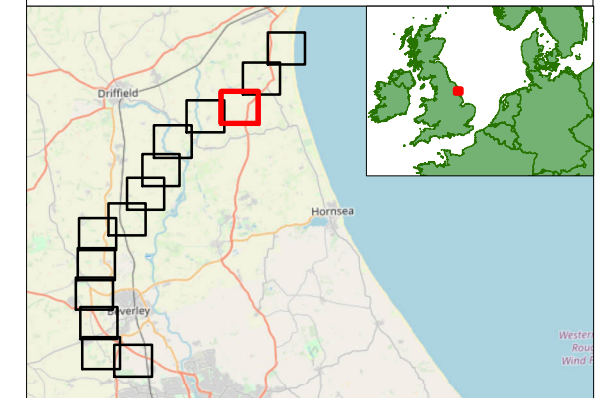
Hornsea Four Onshore Crossing Schedule

Page 3 of 14



- Crossing Point (Onshore)
 - Access Points, Public Highway
 - Access Points, Haul Road Crossing
 - Indicative Drill Line
 - PEIR Boundary
 - Logistics Compounds
 - Temporary Access
- Utilities Owner**
- Cadent Gas
 - Northern Gas Networks
 - Northern Powergrid - (Yorkshire)
 - Openreach - [British Telecommunications]
 - Yorkshire Water - Water

Restricted



Coordinate system: British National Grid
 Scale@A3: 1:10,000

0 125 250 500 Meters

0 375 750 1,500 Feet

REV	REMARK	DATE
...	First Issue	24/06/2019

Onshore Crossing Schedule
 Document no: HOW040235
 Created by: XDAO0
 Checked by: KIEBE
 Approved by: ANTSA



Licenses:
 Service Layer Credits: © OpenStreetMap (and) contributors, CC-BY-SA,
 © Crown copyright and database rights [2019] Ordnance Survey
 0100031673. All rights reserved.

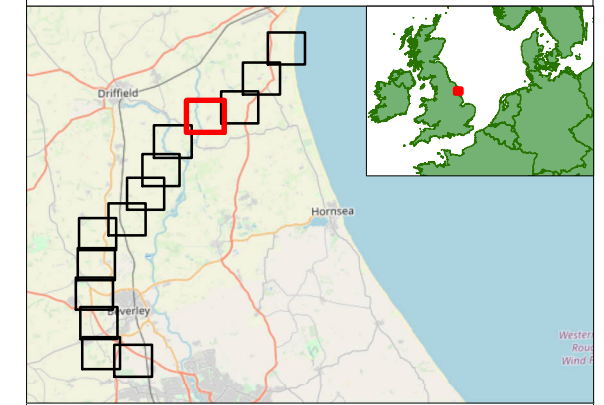
Hornsea Four Onshore Crossing Schedule

Page 4 of 14

- Crossing Point (Onshore)
 - Access Points, Public Highway
 - Access Points, Haul Road Crossing
 - Indicative Drill Line
 - PEIR Boundary
 - Temporary Access
- Utilities Owner**
- Northern Gas Networks
 - Northern Powergrid - (Yorkshire)
 - Openreach - [British Telecommunications]
 - Yorkshire Water - Water



Restricted



Coordinate system: British National Grid
 Scale@A3: 1:10,000

0 125 250 500 Meters

0 375 750 1,500 Feet

REV	REMARK	DATE
...	First Issue	24/06/2019

Onshore Crossing Schedule
 Document no: HOW040235
 Created by: XDAO0
 Checked by: KIEBE
 Approved by: ANTSA

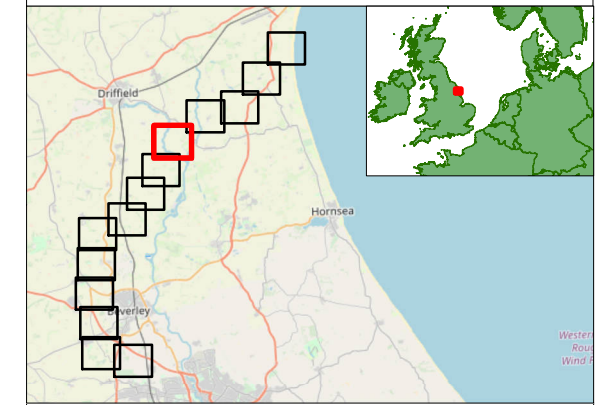


Hornsea Four Onshore Crossing Schedule

Page 5 of 14

- Crossing Point (Onshore)
 - Access Points, Public Highway
 - Access Points, Haul Road Crossing
 - Indicative Drill Line
 - PEIR Boundary
 - Logistics Compounds
 - Temporary Access
- Utilities Owner**
- Environment
 - Northern Powergrid - (Yorkshire)
 - Openreach - [British Telecommunications]
 - Yorkshire Water - Water

Restricted



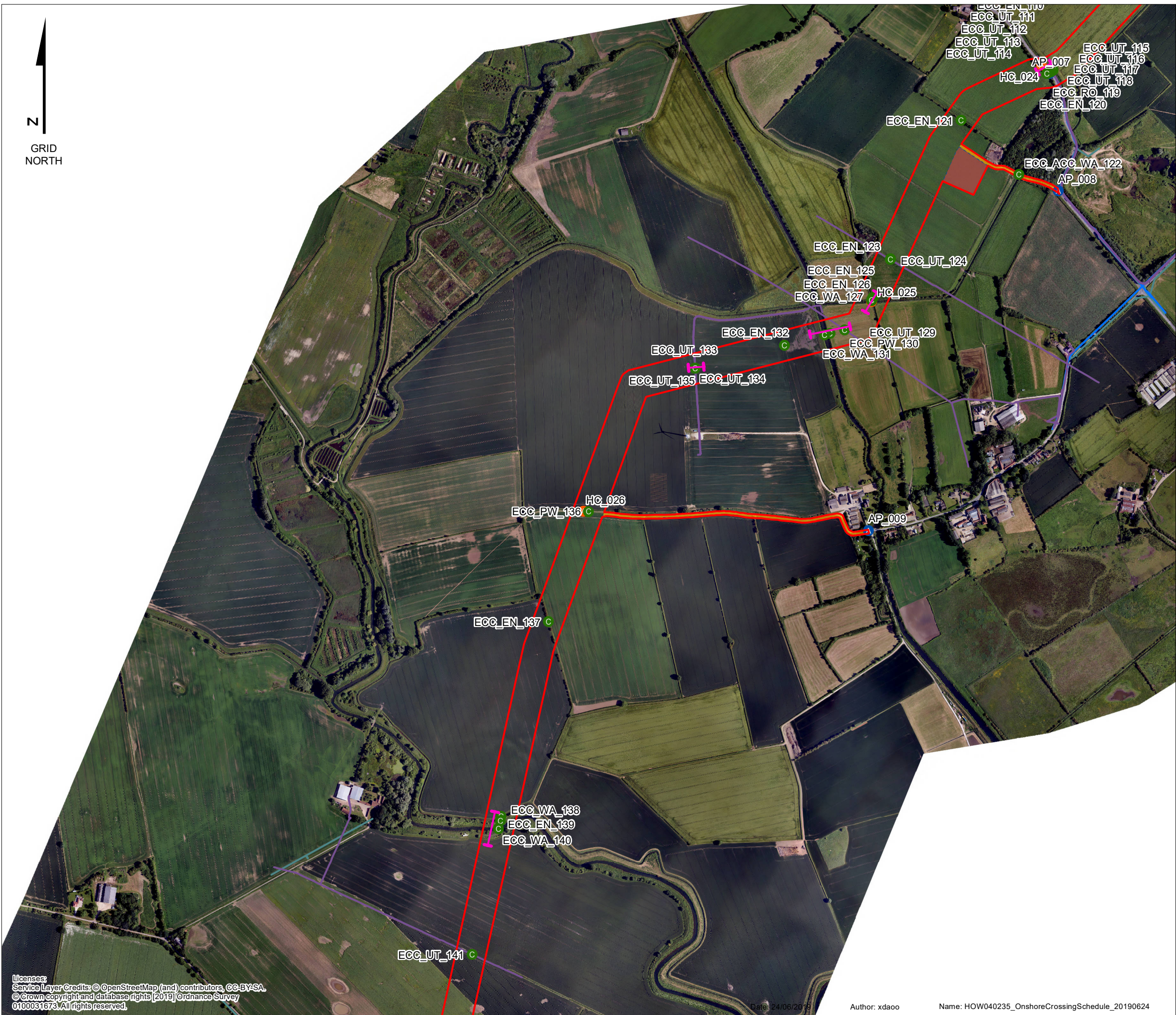
Coordinate system: British National Grid
 Scale@A3: 1:10,000

0 125 250 500 Meters

0 375 750 1,500 Feet

REV	REMARK	DATE
...	First Issue	24/06/2019

Onshore Crossing Schedule
 Document no: HOW040235
 Created by: XDAO0
 Checked by: KIEBE
 Approved by: ANTSA



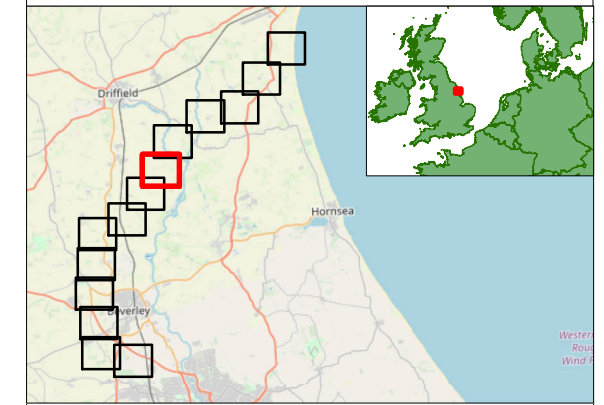
Licenses:
 Service Layer Credits: © OpenStreetMap (and) contributors, CC-BY-SA.
 © Crown copyright and database rights [2019] Ordnance Survey
 0100031673. All rights reserved.

Hornsea Four Onshore Crossing Schedule

Page 6 of 14

- Crossing Point (Onshore)
 - Access Points, Public Highway
 - Access Points, Haul Road Crossing
 - Indicative Drill Line
 - PEIR Boundary
- Utilities Owner**
- Environment Agency
 - Northern Powergrid - (Yorkshire)
 - Openreach - [British Telecommunications]

Restricted



Coordinate system: British National Grid
 Scale@A3: 1:10,000

0 125 250 500 Meters

0 375 750 1,500 Feet

REV	REMARK	DATE
...	First Issue	24/06/2019

Onshore Crossing Schedule
 Document no: HOW040235
 Created by: XDAOO
 Checked by: KIEBE
 Approved by: ANTSA



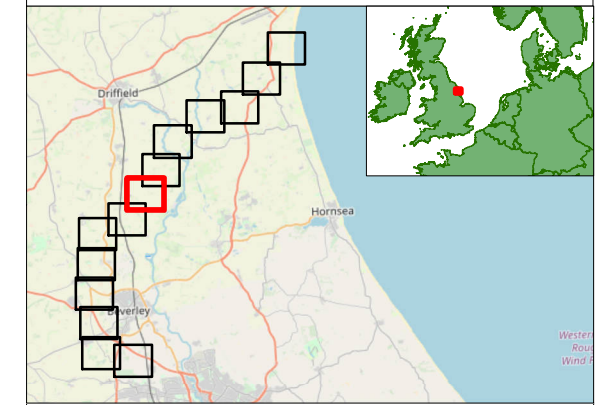
Licenses:
 Service Layer Credits: © OpenStreetMap (and) contributors, CC-BY-SA.
 © Crown copyright and database rights [2019] Ordnance Survey
 0100031673. All rights reserved.

Hornsea Four Onshore Crossing Schedule

Page 7 of 14

- Crossing Point (Onshore)
 - Access Points, Public Highway
 - Access Points, Haul Road Crossing
 - Indicative Drill Line
 - PEIR Boundary
 - Logistics Compounds
- Utilities Owner**
- Northern Powergrid - (Yorkshire)
 - Openreach - [British Telecommunications]

Restricted



Coordinate system: British National Grid
 Scale@A3: 1:10,000

0 125 250 500 Meters

0 375 750 1,500 Feet

REV	REMARK	DATE
...	First Issue	24/06/2019

Onshore Crossing Schedule
 Document no: HOW040235
 Created by: XDAOO
 Checked by: KIEBE
 Approved by: ANTSA



Licenses:
 Service Layer Credits: © OpenStreetMap (and) contributors, CC-BY-SA.
 © Crown copyright and database rights [2019] Ordnance Survey
 0100031673. All rights reserved.

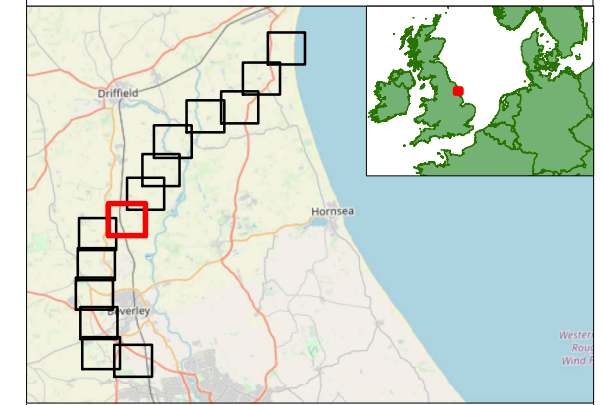
Hornsea Four Onshore Crossing Schedule

Page 8 of 14



- Crossing Point (Onshore)
 - Access Points, Public Highway
 - Access Points, Haul Road Crossing
 - Indicative Drill Line
 - PEIR Boundary
 - Logistics Compounds
 - Temporary Access
- Utilities Owner**
- KCOM Group
 - Network Rail
 - Northern Powergrid - (Yorkshire)
 - Openreach - [British Telecommunications]
 - Yorkshire Water - Water

Restricted



Coordinate system: British National Grid
 Scale@A3: 1:10,000

0 125 250 500 Meters

0 375 750 1,500 Feet

REV	REMARK	DATE
...	First Issue	24/06/2019

Onshore Crossing Schedule
 Document no: HOW040235
 Created by: XDAOO
 Checked by: KIEBE
 Approved by: ANTSA



Licenses:
 Service Layer Credits: © OpenStreetMap (and) contributors, CC-BY-SA.
 © Crown copyright and database rights [2019] Ordnance Survey
 0100031673. All rights reserved.

500000



GRID NORTH

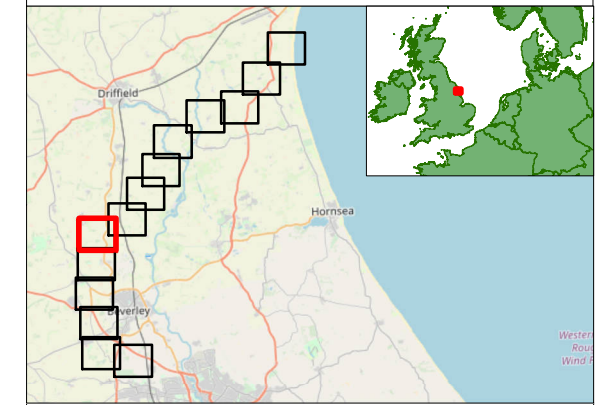


500000

Hornsea Four Onshore Crossing Schedule Page 9 of 14

- Crossing Point (Onshore)
 - Access Points, Public Highway
 - Access Points, Haul Road Crossing
 - Indicative Drill Line
 - PEIR Boundary
 - Logistics Compounds
 - Temporary Access
- Utilities Owner**
- KCOM Group
 - Northern Powergrid - (Yorkshire)
 - Openreach - [British Telecommunications]
 - Yorkshire Water - Water

Restricted



Coordinate system: British National Grid
 Scale@A3: 1:10,000

0 125 250 500 Meters
 0 375 750 1,500 Feet

REV	REMARK	DATE
...	First Issue	24/06/2019

Onshore Crossing Schedule
 Document no: HOW040235
 Created by: XDAO0
 Checked by: KIEBE
 Approved by: ANTSA



Licenses:
 Service Layer Credits: © OpenStreetMap (and) contributors, CC-BY-SA.
 © Crown copyright and database rights [2019] Ordnance Survey
 0100031673. All rights reserved.

500000



GRID NORTH

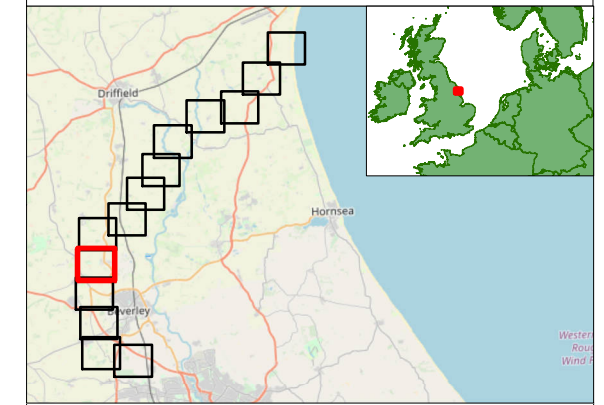


500000

Hornsea Four Onshore Crossing Schedule Page 10 of 14

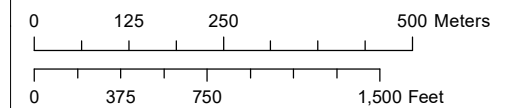
- Crossing Point (Onshore)
 - Access Points, Public Highway
 - Access Points, Haul Road Crossing
 - Indicative Drill Line
 - PEIR Boundary
 - Logistics Compounds
 - Temporary Access Tracks
- Utilities Owner**
- Northern Gas Networks
 - Northern Powergrid - (Yorkshire)
 - Openreach - [British Telecommunications]
 - Yorkshire Water - Sewer
 - Yorkshire Water - Water

Restricted



Coordinate system: British National Grid

Scale@A3: 1:10,000



REV	REMARK	DATE
...	First Issue	24/06/2019

Onshore Crossing Schedule
 Document no: HOW040235
 Created by: XDAO0
 Checked by: KIEBE
 Approved by: ANTSA

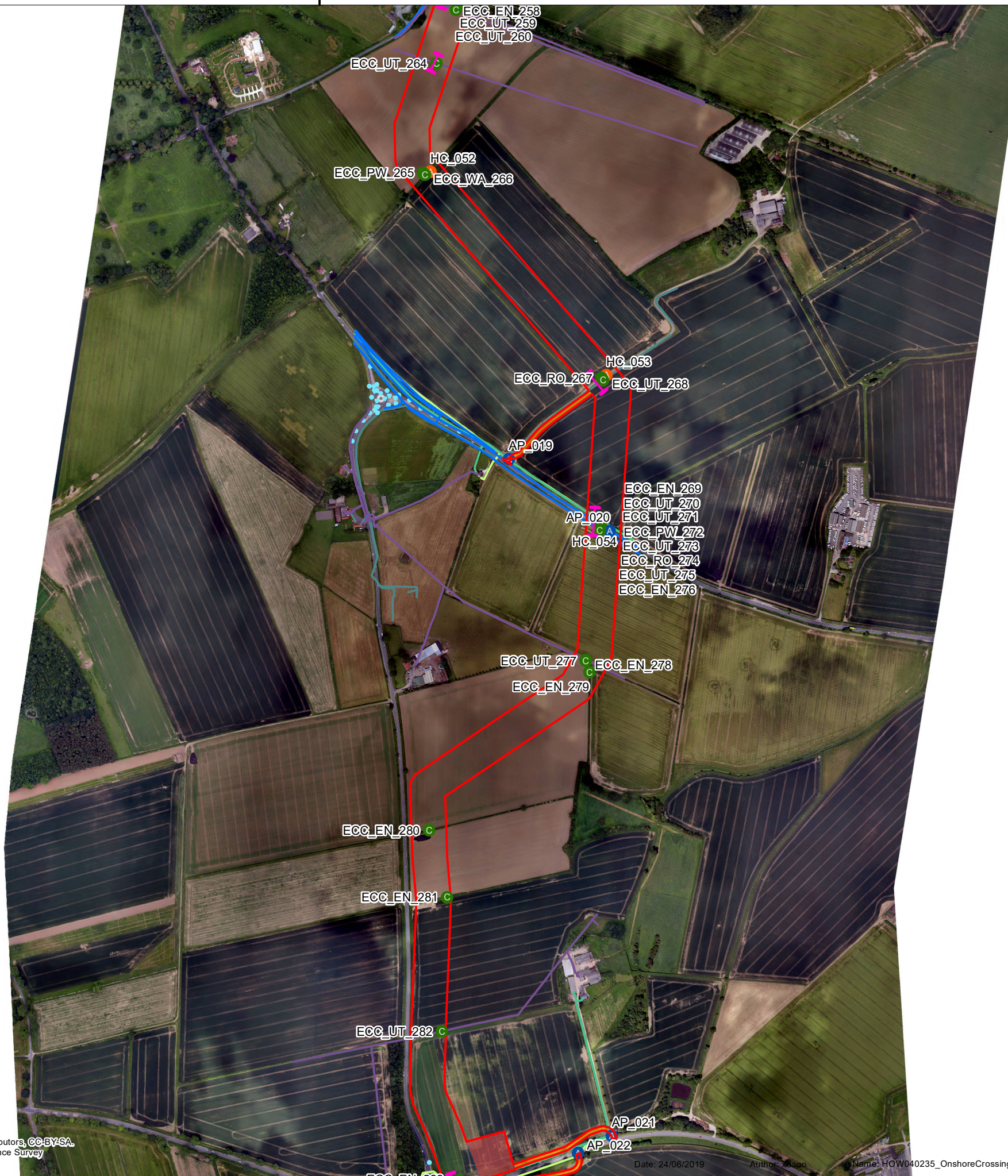


Licenses:
 Service Layer Credits: © OpenStreetMap (and) contributors, CC-BY-SA,
 © Crown copyright and database rights [2019] Ordnance Survey
 0100031673. All rights reserved.

500000



GRID NORTH



440000

500000

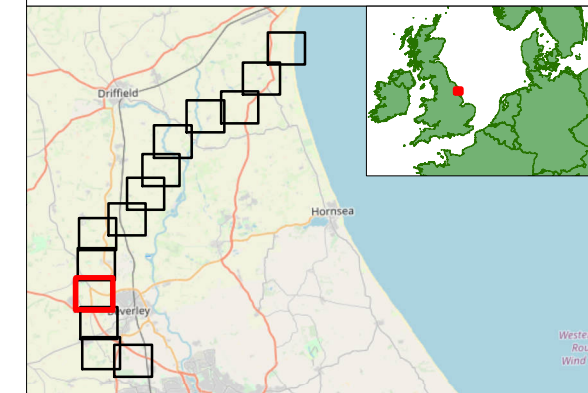
Licenses:
Service Layer Credits: © OpenStreetMap (and) contributors, CC-BY-SA.
© Crown copyright and database rights [2019] Ordnance Survey
0100031673. All rights reserved.

Date: 24/06/2019 Author: XDAO Name: HOW040235_OnshoreCrossingSchedule_20190624

Hornsea Four Onshore Crossing Schedule Page 11 of 14

- Crossing Point (Onshore)
 - Access Points, Public Highway
 - Access Points, Haul Road Crossing
 - Indicative Drill Line
 - PEIR Boundary
 - Logistics Compounds
 - Temporary Access
- Utilities Owner**
- East Riding of Yorkshire Council
 - KCOM Group
 - Northern Gas Networks
 - Northern Powergrid - (Yorkshire)
 - Openreach - [British Telecommunications]
 - Yorkshire Water - Water

Restricted



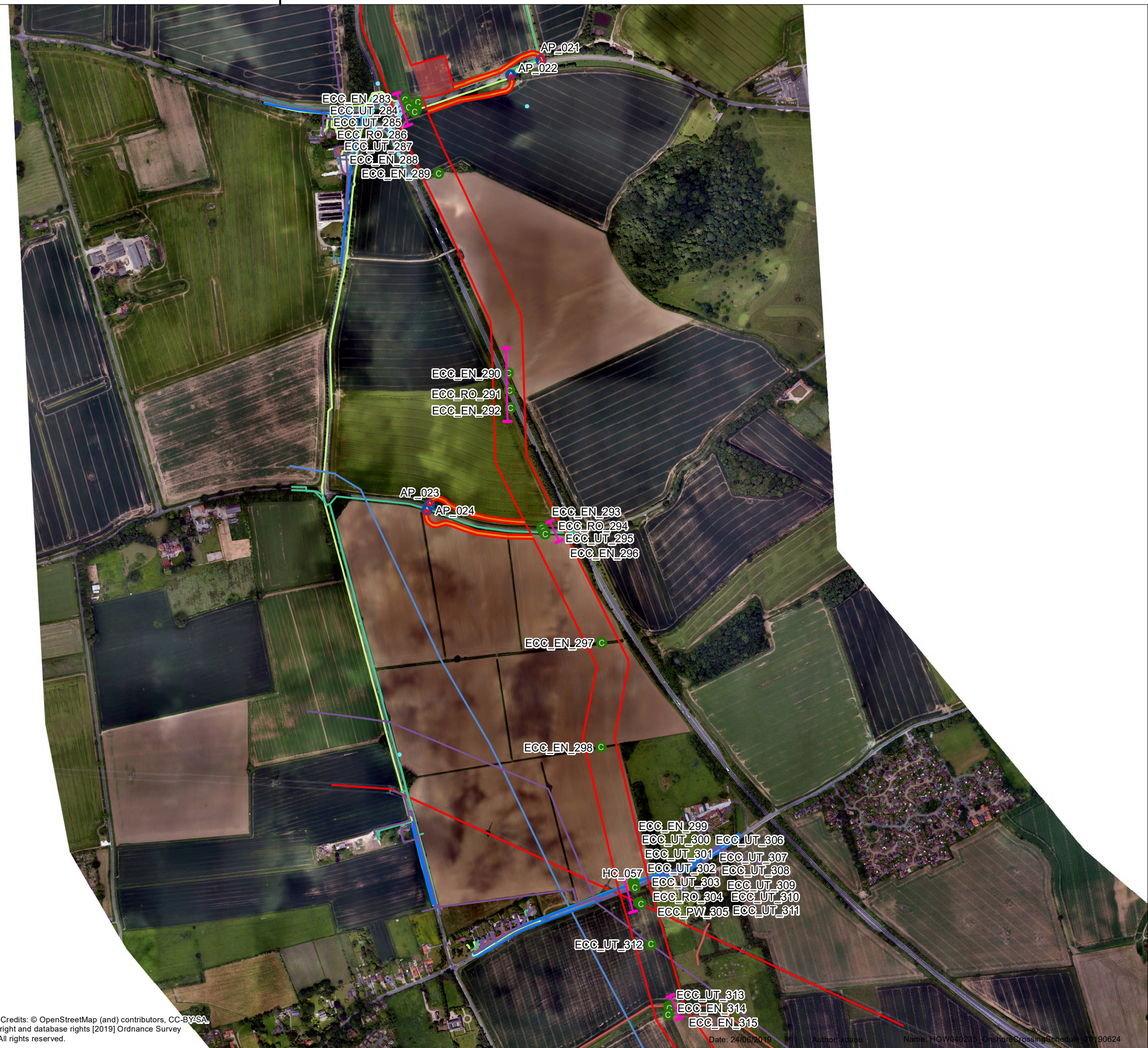
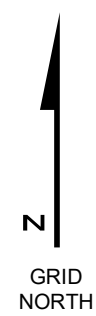
Coordinate system: British National Grid
Scale@A3: 1:10,000
0 125 250 500 Meters
0 375 750 1,500 Feet

REV	REMARK	DATE
...	First Issue	24/06/2019

Onshore Crossing Schedule
Document no: HOW040235
Created by: XDAO
Checked by: KIEBE
Approved by: ANTSA



500000

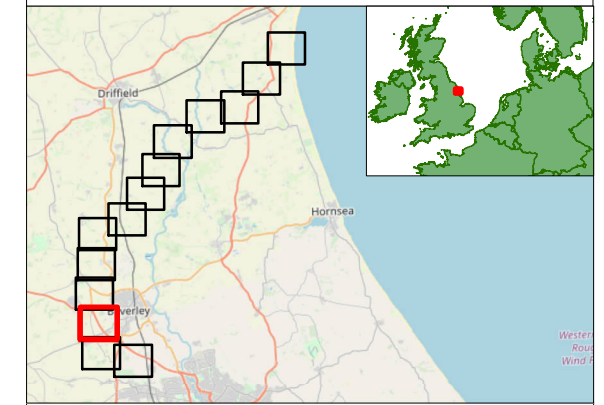


500000

Hornsea Four Onshore Crossing Schedule Page 12 of 14

- Crossing Point (Onshore)
 - Access Points, Public Highway
 - Access Points, Haul Road Crossing
 - Indicative Drill Line
 - PEIR Boundary
 - Logistics Compounds
 - Temporary Access
- Utilities Owner**
- East Riding of Yorkshire Council
 - INEOS TSEP
 - KCOM Group
 - Northern Gas Networks
 - Northern Powergrid - (Yorkshire)
 - Openreach - [British Telecommunications]
 - Unknown (formerly assumed Cadent Gas)
 - Yorkshire Water - Sewer
 - Yorkshire Water - Water

Restricted



Coordinate system: British National Grid
 Scale@A3: 1:10,000
 0 125 250 500 Meters
 0 375 750 1,500 Feet

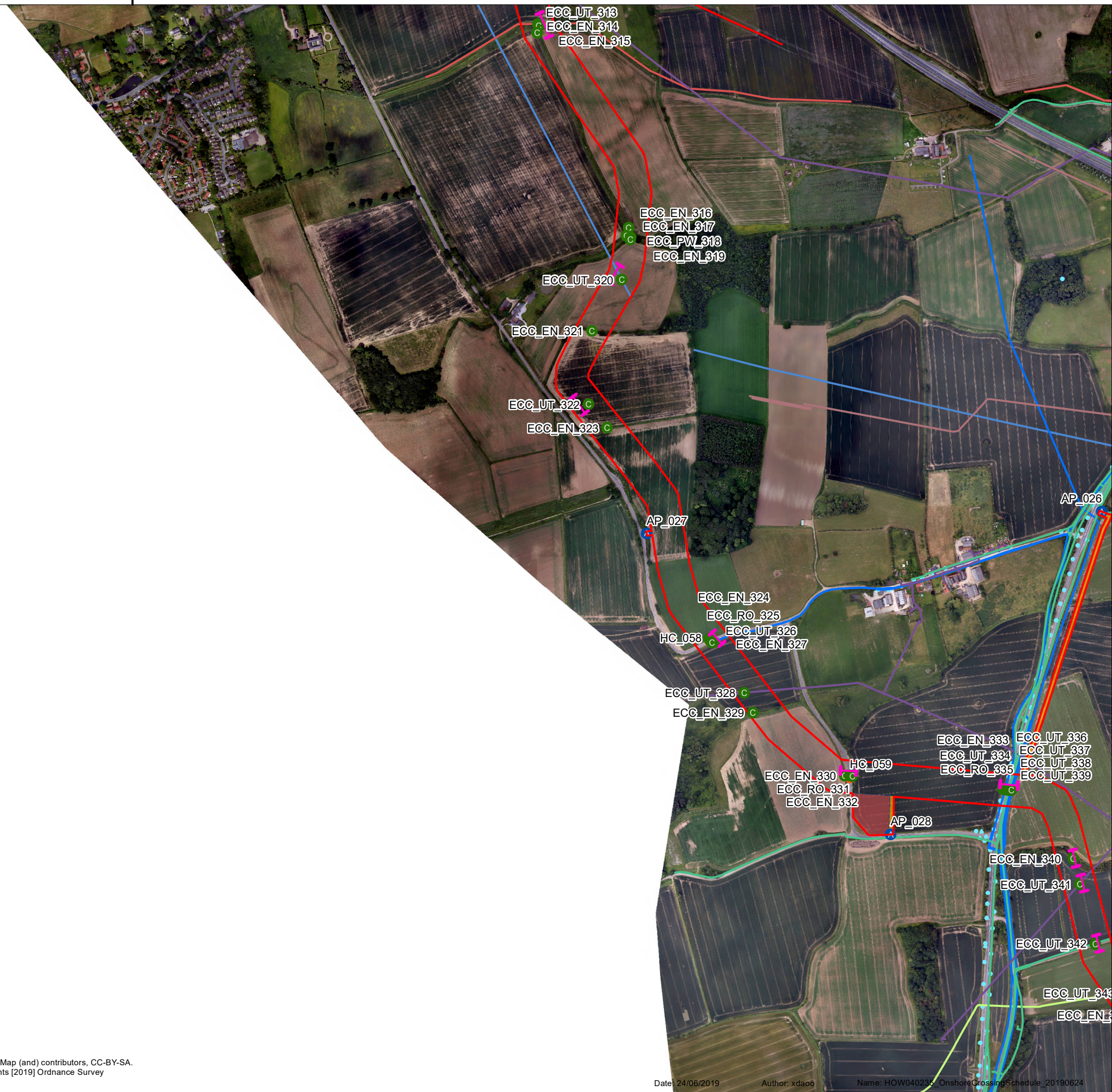
REV	REMARK	DATE
...	First Issue	24/06/2019

Onshore Crossing Schedule
 Document no: HOW040235
 Created by: XDAO0
 Checked by: KIEBE
 Approved by: ANTSA



Licenses:
 Service Layer Credits: © OpenStreetMap (and) contributors, CC-BY-SA.
 © Crown copyright and database rights [2019] Ordnance Survey
 0100031673. All rights reserved.

500000

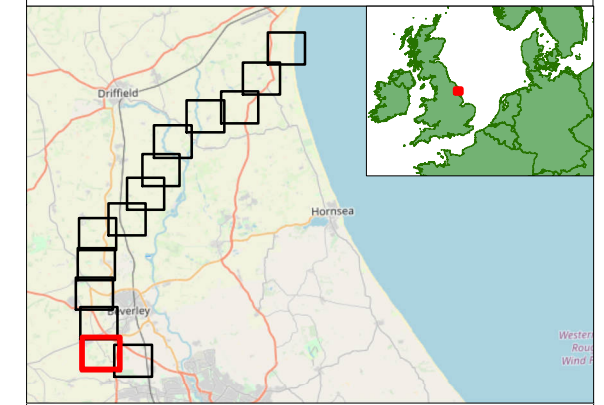


500000

Hornsea Four Onshore Crossing Schedule Page 13 of 14

- Crossing Point (Onshore)
 - Access Points, Public Highway
 - Access Points, Haul Road Crossing
 - Indicative Drill Line
 - PEIR Boundary
 - Logistics Compounds
 - Temporary Access
- Utilities Owner**
- Cadent Gas
 - East Riding of Yorkshire Council
 - INEOS TSEP
 - KCOM Group
 - Northern Gas Networks
 - Northern Powergrid - (Yorkshire)
 - Unknown (formerly assumed Cadent Gas)
 - Yorkshire Water - Sewer
 - Yorkshire Water - Water

Restricted



Coordinate system: British National Grid
 Scale@A3: 1:10,000
 0 125 250 500 Meters
 0 375 750 1,500 Feet

REV	REMARK	DATE
...	First Issue	24/06/2019

Licenses:
 Service Layer Credits: © OpenStreetMap (and) contributors, CC-BY-SA.
 © Crown copyright and database rights [2019] Ordnance Survey
 0100031673. All rights reserved.

Onshore Crossing Schedule
 Document no: HOW040235
 Created by: XDAO0
 Checked by: KIEBE
 Approved by: ANTSA

