

# Orsted Community Benefit Funds

Autumn newsletter  
2023







# Total community benefit fund commitment to reach approximately £37 million with Hornsea 3

At Ørsted, our vision is a world that runs entirely on green energy. With the onshore site preparation for our planned Hornsea 3 offshore wind farm and recent planning approval for Hornsea 4, we're taking steps toward achieving that vision in the UK.

Climate change impacts each and every one of us. As one of the world's leading renewable energy companies, our aim is to deliver green energy solutions – as well as lasting positive impacts in the communities where we construct and operate our offshore wind farms. UK coastal communities, within a defined proximity to our offshore projects and onshore cabling infrastructure, can benefit from the community benefit funds provided by Ørsted.

Including the Hornsea 3 installation, Ørsted's community benefit fund provision will reach

approximately £37 m for their combined fund portfolio's duration. This investment, makes a huge, positive difference to the community groups who are awarded grants and to the users of the facilities and services they provide.

Ørsted remain extremely grateful to the groups who continue to apply for the funding and successfully deliver their diverse and often critical projects. We strongly believe, that together, we can make the world a much better place.

To find out more about the eligibility criteria for the funds offered and how to apply, please visit our fund administrator's website: [www.grantscape.org.uk](http://www.grantscape.org.uk)

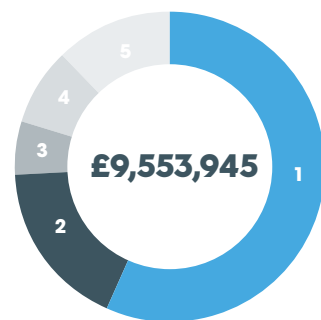
**Imran Nawaz**  
Senior Stakeholder Advisor & CBF Manager, Ørsted

## Ørsted provides Community Benefit Funds for the following offshore wind farm projects

- Burbo Bank Extension in Liverpool Bay – £225,000 per year
- Walney Extension in the Irish Sea off the Cumbria coastline – £600,000 per year which includes £100,000 Skills Fund
- East Coast – Hornsea Projects and Race Bank located in the North Sea off the Yorkshire, Lincolnshire and North Norfolk coastline – £465,000 per year which includes £75,000 Skills Fund



### Funds awarded to date:



**1. Community activities and services**



**2. Community buildings and facilities**



**3. Nature and public open space projects**



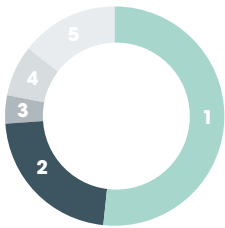
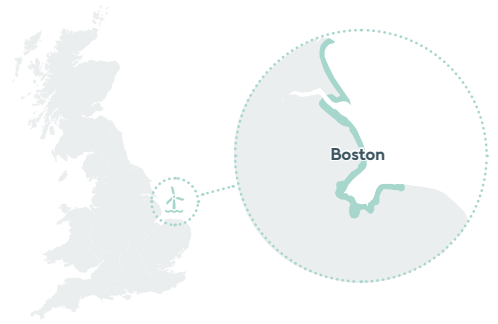
**4. Sports, recreation and play**



**5. Skills Fund projects**

# East Coast Community Fund

The East Coast Community Fund is linked to the Hornsea projects and Racebank offshore wind farms and has £465,000 available each year. In the coastal areas of Yorkshire, Lincolnshire, and North Norfolk, 245 projects have been supported so far.



**£ 3,251,888**  
awarded since  
the fund launched  
in 2016



**Fishing for Mental Health  
Well-being in Lincolnshire**



On Track Fishing was awarded a grant of £4,215 to deliver taster/experience days for Juniors (age 4-16 years), visually impaired participants, emergency service personnel and adult social days at Meadows Fishery, Chapel St Leonards.

Gareth Pavelin, On Track Fishing Founder, said: "Thanks to the grant from the East Coast Community Fund, we have supported well over 200 people with mental health issues. Using fishing as a way to help combat these issues, new social bonds have also been created."



**Acquired Brain Injury Worker**



Headway Lincolnshire, was awarded £20,000 to finance an experienced Acquired Brain Injury worker, to help support brain injury survivors, their carers, and families across Boston District, South Holland and East Lindsey. The service provides invaluable support through one-to-ones via video and telephone, group support, educational groups and social media/meetups.

Ann-Marie Smith, Coordinator & Development Officer said: "We are delighted to have been awarded a grant from the East Coast Community Fund. This will provide much needed funding to allow us to continue our work with brain injury survivors and their families across the whole of the East Coast of Lincolnshire. We are thrilled that the program has recognised the needs of those effected by brain injury in this way."



**Skills Fund**

**Each year, up to £75,000 of the East Coast Community Fund is set aside for the Skills Fund. The aim is to provide educational and learning opportunities for people within the fund's benefit area to help to improve their skills and employment opportunities. The fund, so far, has awarded over £467,829, supporting 28 projects across the area.**

**Cambridge Science Centre - Hands-on STEM Roadshow**

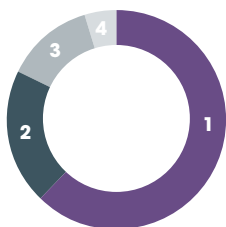
Cambridge Science Centre was awarded a grant of £10,283 to deliver two STEM Roadshows over two academic years at a school located within Ørsted's East Coast Community Fund area. This project allowed Cambridge Science Centre to provide these critical, awe-inspiring interventions at key points in a young person's educational

journey. Teachers let us know how important this experience is for their students, they said: "Kids loved it. Great way of learning." And said that the best parts were: "The opportunity for children to be involved. Great interaction."



# Burbo Bank Extension Community Fund

The Burbo Bank Extension Community Fund provides £225,000 each year and has so far awarded 187 grants across Merseyside and North Wales.



**£ 1,801,011**  
awarded  
since the fund  
launched in 2015



**Blue Skies Inspire Packages**  
Teamwork, Leadership and  
Employability in Rhyl and Prestatyn



Jon Egging Trust was awarded £4,996 towards the delivery of three Blue Skies Inspire Programmes (BSIPs) in Rhyl and Prestatyn. BSIPs enable young people to fulfil their potential by working to address issues such as mental health, limited social skills and low self-esteem as early as possible.

Matthew Bennett, Deputy Headteacher, Ysgol Christchurch in Rhyl, said: "The programme makes the pupils consider the importance of teamwork and the need to listen and value other people's ideas and suggestions. I think it is also important that pupils understand that you cannot get everything right and the willingness to try again is crucial in life.

"The pupils that we selected for the programme were chosen as we felt they would benefit most from involvement in the programme. Some of the pupils that have really surprised us are the quiet pupils who are not usually the first to put themselves forward for group activities. The celebratory assembly at the end of the programme provided the opportunity for the pupils to speak publicly in front of their peers and some of the school governors. It was great to see as some of the pupils really embraced this and we were really impressed with their public speaking."



**Netherton Sports Health and  
Personal Development Programme**



The Fillies GFC was awarded £12,250 to support the costs of staffing an established programme. The sports health development worker delivered sessions within the community to young people aged 4-16 using football as a vehicle for topical discussions, nutrition, first aid, mental health, confidence and self-esteem building, healthy/positive friendships and relationships, teamwork and personal development.

Michelle Fairclough, The Fillies GFC Secretary, said: "Thank you to the Burbo Bank Extension Community fund for awarding funding for Fillies to provide crucial support to young people and families, within our community, where lack of support could have a detrimental effect on their health and well-being in life/futures."



**Community Resilience**



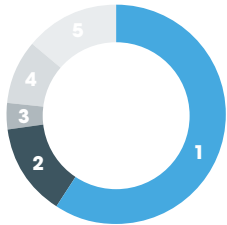
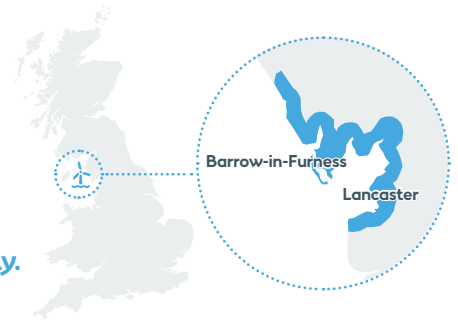
Linacre Bridge Community Hub was awarded a grant of £18,000 towards the Centre Manager's salary for one year at the Hub so the post holder can continue to provide vital community support. The Centre acts as a place for youth diversionary activities, a safe haven for community engagement with public services and as a place for the community to come together to support each other and be supported. The Centre Manager is key to this provision as the only paid member of staff.

Martin Kilpatrick, Chair of Trustees, said: "Without the grant we received we would have struggled to keep our centre open which would have had a huge impact in an area of such high deprivation. We provide a variety of community services for some of our most vulnerable residents many of whom will go nowhere else."



# Walney Extension Community Fund

The Walney Extension Community Fund is linked to the offshore wind farm off the Walney Island coast in Cumbria and has £600,000 available annually. To date, 248 local projects have been supported.



**£ 4,501,045**  
awarded since  
the fund launched  
in 2016



**Skills Workshops for Young People**



Escape2Make was awarded £4,860 towards workshops for 11 – 18-year-olds to engage in. The learning, bonding and dynamic that the activities created, empowered 123 young people to find the skills and the courage to deliver an evening of entertainment and a 3-course-meal to over 140 guests.

Sharon Burns, Marketing & Admin Lead, said: "The Escape2Make team would like to thank the Walney Extension Community Fund for supporting the opportunity to deliver a vibrant programme of 53 creative sessions over a 5-week period which then delivered a memorable CABARET event in the heart of Morecambe. They foraged, they cooked, they learned Arabic dessert making, stand-up comedy, cartoon portraits. They made a film, wrote poetry and lyrics, created a band in a day and a mini musical. They wowed with their magic tricks and their upcycled fashion, they covered the sands of Morecambe bay with beach art and had the most fun at a paint rave. Your generosity helped to make that happen and the impact we saw was priceless."



**Pumptrack Refurbishment**



Allithwaite Playing Fields and Community Centre was awarded £9,725 to build a community bike pumptrack. These are growing massively in popularity and are an exciting and inclusive way to exercise and improve skills. This project increased a smaller pumptrack created in 2013, which was already enjoyed by at least 50 riders a week. The successfully completed project now offers a far superior facility, including an all-weather tarmac surface, which is suitable for riders of all ages and abilities.

Jonathan Thorburn, Pumptrack Coordinator, said "I'd like to thank the Walney Extension Community Fund for their generous donation, without which, we wouldn't have been able to commission the building of the amazing pumptrack we now have."



**Skills Fund**

Each year, up to £100,000 of the Walney Extension Community Fund is set aside for the Skills Fund. The aim is to provide educational and learning opportunities for people within the fund's benefit area to help to improve their skills and employment opportunities. The fund, so far, has awarded nearly £700,000 supporting 30 projects across the funding area.

## ENTHUSE Charitable Trust - ENTHUSE Partnerships

ENTHUSE Charitable Trust was awarded £37,267 towards improving the quality of teaching in STEM subjects (science, technology, engineering and maths) and more effective transition between school years for 5-11-year-olds. This included teacher training (attending intensive residential courses at the National STEM Learning Centre), student enrichment (provision of new resources such as coding kits for 5 year-olds, torches and light equipment, thermometers, data loggers and train cameras), and industry volunteering with STEM Ambassadors (taking part in activities such as a LEGO Robotics workshop, Schools for the future competition, RoboKids Space Show, and the Lancashire Science Festival). The STEM Ambassador Programme has also supported schools in these Partnerships, running a STEM Careers week and continuing to assist students through STEM Clubs.



# Hornsea 3 Community Fund – Community Consultation Results



Ørsted have committed to providing additional funding into a new Community Benefit Fund. The Hornsea 3 Community Fund will have £700,000 available each year for an initial 10-year period. Ørsted commissioned GrantScape to undertake a community consultation process to hear the views of local stakeholders on this new fund.

The consultation process was focussed within the likely funding zone of the new fund along a coastal 5 km strip from the Lincolnshire and North Norfolk County boundary right around to the coast to just south of Lowestoft. This will mean a change to the current East Coast Community Fund eligible area, which will end where the Hornsea 3 Community Fund will begin. The zone will also include an area around the cabling route. Please see the map image below which covers the consultation area.



A three-stage public consultation programme commenced in August 2022 and completed at the end of April 2023.

The purpose of the consultation was to:

- Seek confirmation on levels of match funding, and whether the fund should support capital or revenue grants.
- Clarify the size of grants the fund will provide.
- Identify suitable individuals to join a local Advisory Panel who will help decide how applications to the fund will be allocated.

GrantScape engaged with over 500 individuals throughout the process. Their views and opinions have helped develop the high-level criteria for the fund.

Based on the feedback from all three stages of the consultation, the criteria on the right will form the basis of the Hornsea 3 Community Benefit Fund.

Each year, £100,000 of the fund will be ring-fenced for a Science Technology Engineering and Maths Skills Fund and an additional £100,000 will be ringfenced for a single 'Legacy' capital project. The remaining £500,000 will be split equally over two funding rounds, supporting both revenue and capital grants.

These will be split between:

- Small grants between £500 and £5,000 (no match funding).
- Main grants between £5,001 and £75,000 (20% match funding required).

The fund will support four themes which are:

- Community buildings and facilities. For example: capital improvement works to village halls, community centres, museums, heritage centres and community cafes. Projects that help transition to greener operations are particularly encouraged.
- Community activities and services. For example: projects addressing health and wellbeing, social isolation, community cohesion, access to amenities, young and old people's projects, and projects providing support for local clubs and groups.
- Environmental, green initiatives, and public open space projects. For example: projects involving habitat/species conservation, community growing schemes, and public parks.
- Sports, recreation, and play. For example: playgrounds, skate parks, indoor climbing walls, sports equipment and sports field drainage projects.

Eligible organisations that can apply for grants include:

- Voluntary and community groups, and local charities
- Parish and Town Councils
- Local Authorities (if the application is being led and driven by a community organisation)
- Social Enterprises and Community Interest Companies

An Advisory Panel has also been established with representatives from Local Authorities, Community Action Norfolk, Community Action Suffolk, the Norfolk Community Foundation and organisations with conservation and wildlife backgrounds. The members have been carefully selected to ensure all areas that can benefit from the fund are well represented by individuals with extensive local knowledge of the local community and environment.

The Hornsea 3 Community Fund is still subject to Ørsted taking a positive Financial Investment Decision (FID) to develop the project which is being targeted in 2023. The fund is forecast to open to applications in January 2024.

# Morecambe Bay Partnership - Defending the Docks



Morecambe Bay Partnership was awarded £29,035 towards 'Defending the Docks' - a military heritage community recording project rooted in STEM learning and skills development for young people.

Defending the Docks was an education and STEM skills development project which focused on the Second World War military landscape of Barrow-in-Furness and Walney Island.

A seven-week training course was delivered for 10 local volunteers to help them develop skills in archaeological techniques to recognise, survey, and monitor the condition of vulnerable military structures, including mathematical survey skills, archival research, aerial photograph and LiDAR investigation, and creating 3D models. The volunteers used these skills to survey 18 vulnerable military installations and document their current condition. Nine of these sites had never previously been surveyed and three were thought to have been removed. These surveys will contribute to the Historic Environment Record database which will inform local planning decisions and help preserve sites for future generations. The project's core volunteers now have the skills to monitor the military archaeology of Barrow into the future and identify threats to its survival.

Volunteers also assessed nine collections of archive documents which shed light on life in the town in the 1940s and the military installations. Seven oral history interviews were conducted with people who grew up in Barrow during the war which are available to listen to on Morecambe Bay Partnership's website at: <https://www.recordingmorecambebay.org.uk/content/voices/second-world-war/defending-the-docks-oral-history> and through Cumbria Archive Service.



They used the results of the community research to create educational resources to enthuse young people about the Second World War history of their area. This included classroom presentations, archive document packs, a defensive structure identification guide, and a virtual reality experience of the Heavy Anti Aircraft battery on Walney Island in the 1940s. They visited five primary schools in the Furness Peninsula, and taught 154 students mathematical surveying techniques, historical research skills and map regression. They also demonstrated how digital technology such as virtual reality, 3D modelling, and 3D printing can be used to gain a better understanding of the history of their area.

Two community exhibitions were held in Barrow, attended by 132 people. These shared the Second World War story of the town, showcased the results of the research project, demonstrated the virtual reality model, introduced free-to-use 3D modelling, and provided themed family-friendly activities. They also hosted an online talk to engage people unable to visit face-to-face events, attended by 35 people.

To complement the technical report of the results lodged with the local authority, they produced an easy-to-read booklet which explores the history of Barrow and Walney during the Second World War. They distributed 360 of these booklets to families of the children who participated in school sessions and attendees of wider community events. A digital version of the booklet has also been made available on their website at: [https://www.morecambebay.org.uk/images/MBP-Defending-the-Docks-Booklet\\_Web.pdf](https://www.morecambebay.org.uk/images/MBP-Defending-the-Docks-Booklet_Web.pdf)



The project also achieved wider benefits for the participants. Many were surprised to learn how important Barrow's industries were to the war effort of the 1940s and how much of the evidence had survived. Conversations with several attendees of the exhibition revealed that they were unaware that they could visit Barrow Archives to view historic documents themselves but would be doing so in future. Volunteers, students, and event participants alike were saddened that their local historic sites had been vandalised. They were delighted to have the opportunity to learn about, value, and make a direct contribution to caring for their locality.

Claire Bradshaw, Archaeology and Heritage Officer, said: "Thanks to the grant from the Walney Extension Community Fund, we have been able to tell the story of Barrow's fascinating wartime heritage, give local volunteers the skills to research the history of their town, and inspire a new generation to care for the vulnerable archaeological remains on their doorstep."

"This kind of presentation to schools is a necessity. It totally engages the children and they retain the information more. It was brilliant to see and hear the children so lively. Please keep doing this."

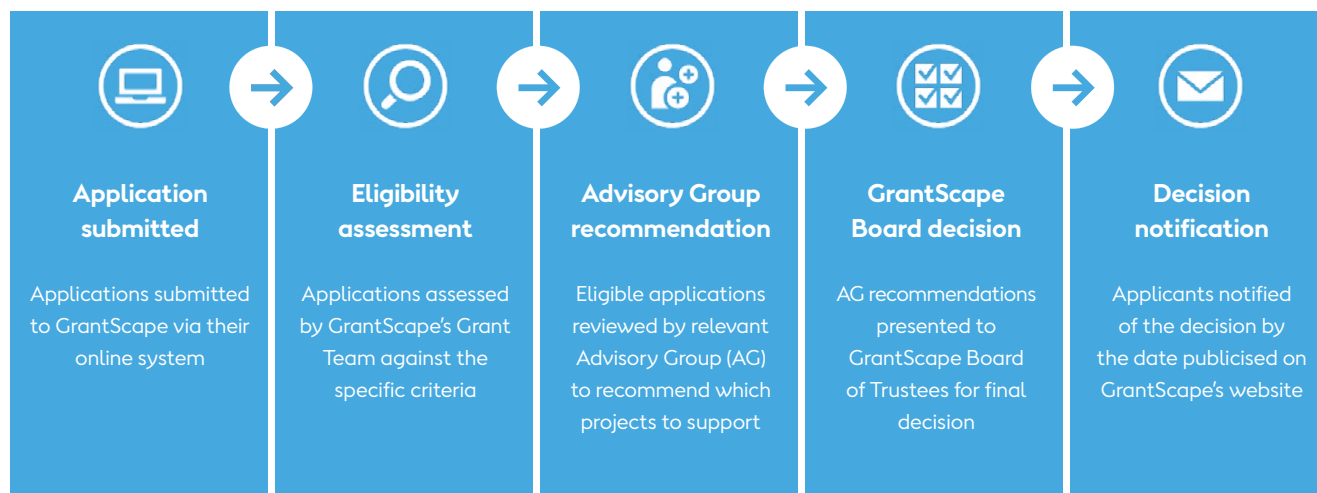
**Class Teacher, St Columba Catholic Primary School**

"A brilliant experience. If you're learning about WW2 and want to tie it in with the local area, this is a must! Thank you for coming in."

**Class Teacher, Lindal and Marton Primary School**



# Applying to the Community Benefit Funds



## Next closing dates:

### Burbo Bank Extension Community Fund

27 March 2024  
(decisions mid June 2024)  
25 September 2024  
(decisions mid December 2024)

### East Coast Community Fund

31 January 2024  
(decisions by end April 2024)  
31 July 2024  
(decisions end October 2024)

### Walney Extension Community Fund

10 January 2024  
(decisions end March 2024)  
3 June 2024  
(decisions end September 2024)

### STEM Skills Fund – Walney Extension and East Coast

10 April 2024  
(decisions end June 2024)

## Applying for a grant and receiving the money



Applying for a grant from GrantScape for the Burbo Bank Extension, East Coast, Walney Extension and Hornsea 3 (when launched in early 2024), Community Benefit Funds is straightforward.

You will be asked some initial eligibility questions about your organisation, where your project will be delivered and the level of grant required. You will then be asked a series of questions to give you the opportunity to explain your project in more detail. A copy of your current constitution, set of rules or governing document is also required. GrantScape do not ask for any other accompanying documentation at this stage, i.e. quotations or lease agreement. This is because not every project

can be funded, so the required documentation is only requested, in the event that you are successful in your application.

When all of the required information has been provided, a contract is issued and, once accepted by yourselves, you can then deliver the project and submit a claim for all or some of the grant (depending on the agreed payment schedule). The entire process is electronic, through GrantScape's online database. The final payment (which in many cases is also the first and only payment) generally requires all of the proof of expenditure and has to be accompanied by a Completion Report with uploaded images of the successfully completed project. We usually pay the grant to your designated bank account, no more than 20 working days after the claim is submitted (providing all of the required information and documentation is provided).

## How the funds are managed

Independent grant-making charity, GrantScape, administer Ørsted's Community Benefit Funds. GrantScape is committed to enhancing the environment and strengthening local communities through its grant programmes. Their experience stretches back to 1997 and they have awarded grants totalling around £90 million to deserving projects over this time.

The decision-making process is supported by a local Advisory Group (AG) established for each Community Benefit Fund. Their help and

advice in the process is absolutely vital in prioritising projects at a local level. The AG members have been carefully selected to ensure all areas that can benefit from the Fund are well represented by people with good local knowledge of the community and environment.

Each fund has its own specific funding criteria and eligible funding area, available on GrantScape's website. Please contact the team at GrantScape with any queries.