

New York Supplier Forum

SGRE Scope description

**Sunrise
Wind**

Powered by
Ørsted &
Eversource

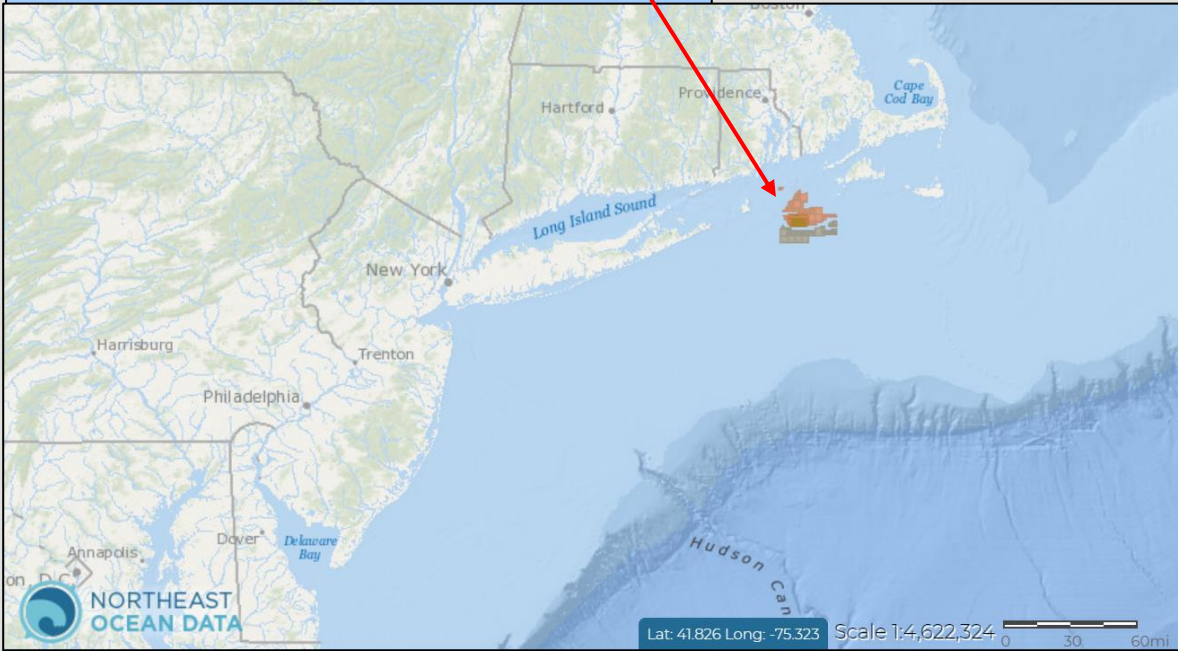




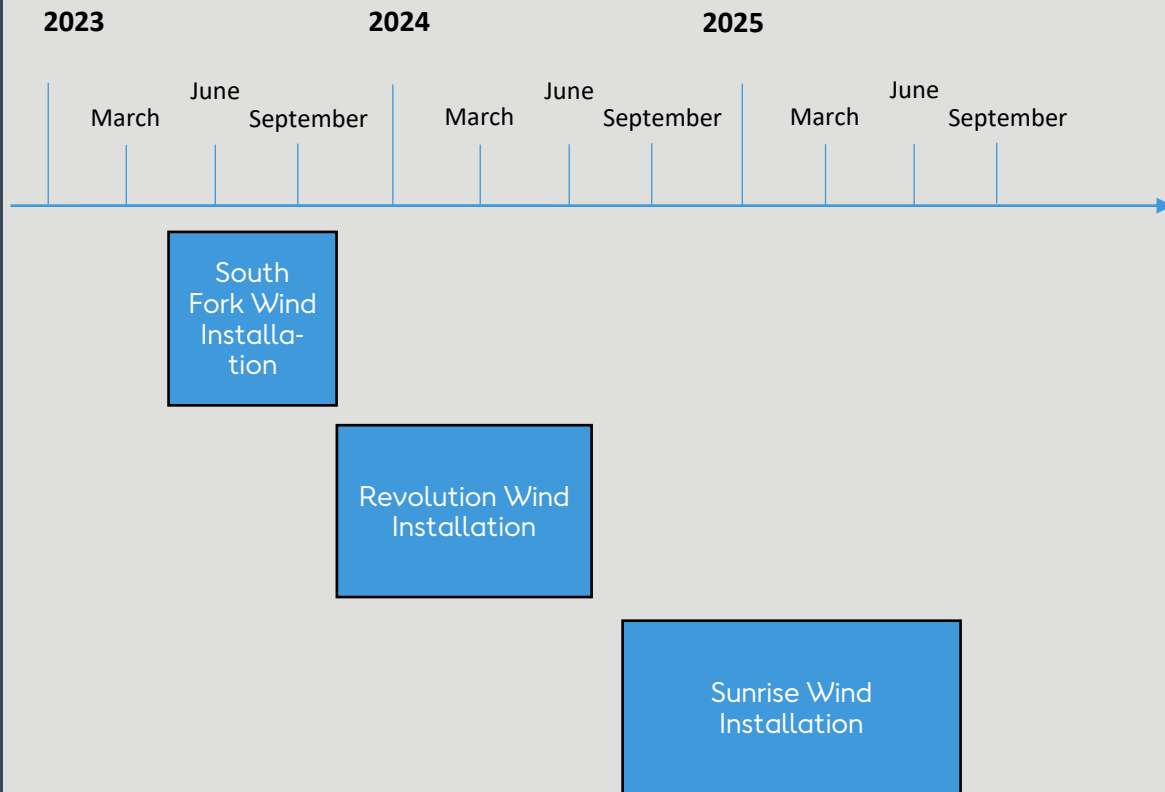
Overview presentation

#WTG	161	Type	SG 11.0-200 DD
Total MW	South Fork Wind: 132 MW / 12 WTGs Revolution Wind: 704 MW / 65 WTGs Sunrise Wind: 924 MW / 84WTGs		
Owner	Orsted and Eversource		
Location	Located in North East US-Federal waters between Montauk, New York and Martha's Vineyard, Massachusetts.		
Scope	Pre-assembly harbor: New London, Connecticut Commissioning harbor: Quonset Point, Rhode Island		

Project location



Installation timeline



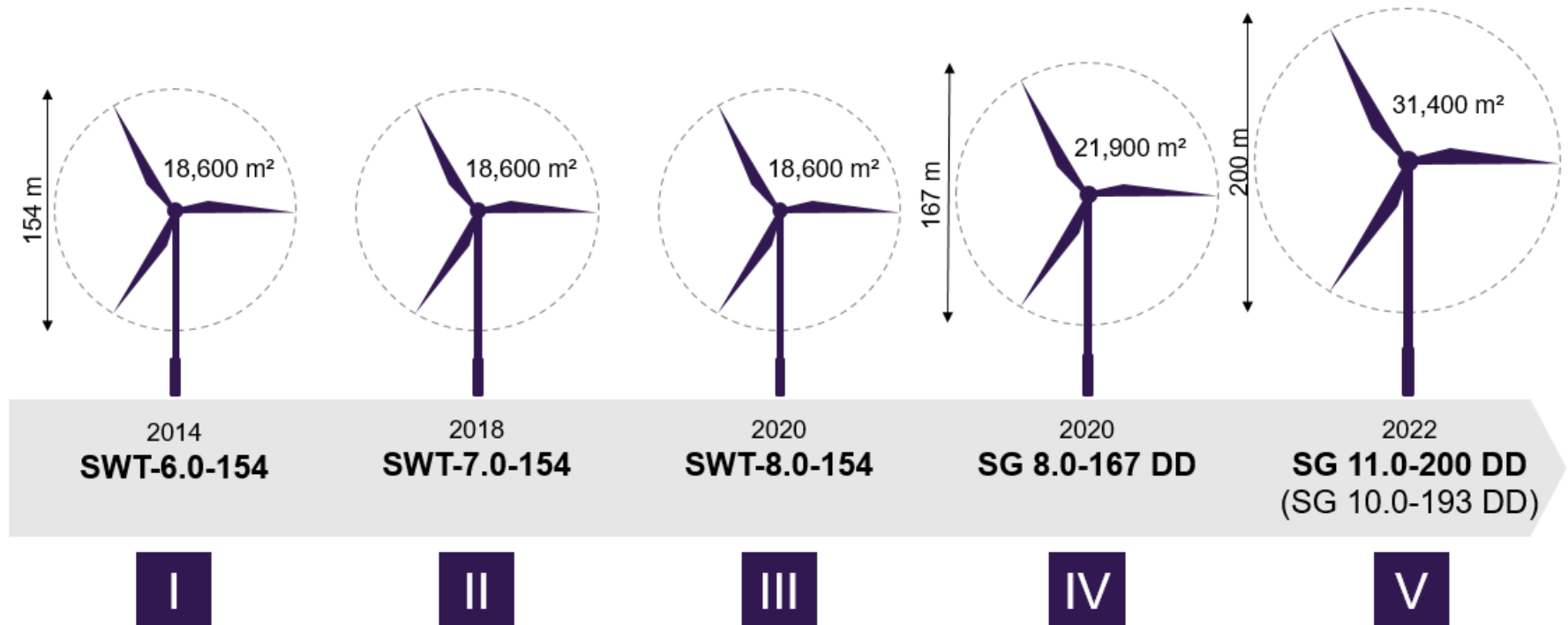
WTG introduction

The heritage from Vindeby* is in our DNA

*Vindeby was the first offshore project in the history

Experience

Five generations of Offshore Direct Drive

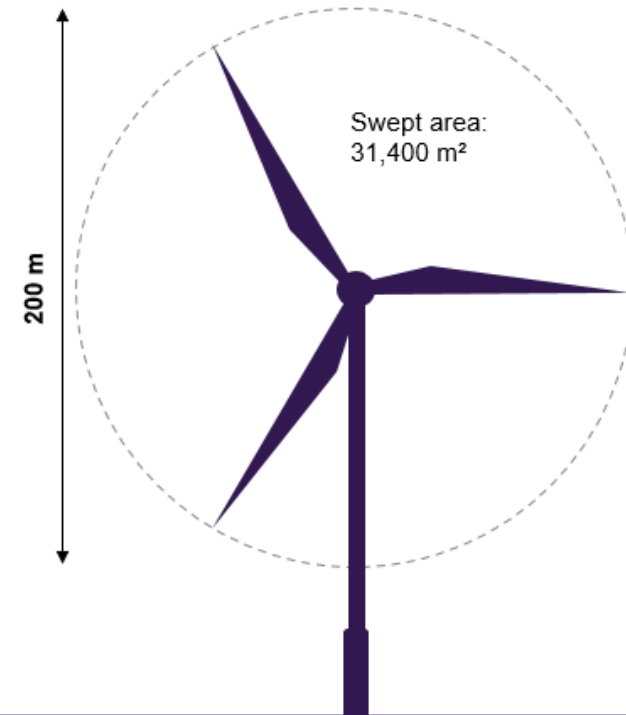


Trusted technology

Our turbine in a nutshell

SG 11.0-200 DD

IEC class	I, S
Nominal power	11,000 kW
Rotor diameter	200 m
Blade length	97 m
Swept area	31,400 m ²
Hub height	Site specific
Power regulation	Pitch-regulated, variable speed



The upgrade from B94 to B97 is done by extending the outer part of the blade by 3.5 meters



70m

Inner

Inner part (up to 70 meter) kept similar:

- Same root, leading edge and trailing edge
- Same structure with very minor updates to accommodate extension
- Same geometry and sweep (x-y axis) as B94

Outer

New in outer part (+70 meter):

- Tip geometry (B94 + 3.5-meter length)
- Enablers for the blade extension:
 - Higher pre-bend (+1 meter bent “into” wind direction (z-axis))
 - Beam reinforcement in outer part
 - Structural reinforcements in outer part

The SG 11.0-200 DD design specifications



Upgrades: Blade, hub, generator, nacelle, converter and transformer.

New: Blade material and air foils.



50/60 Hz markets.



66 kV.



Power Boost and
High Wind Ride Through.

**Infrastructure companies for
preps at site.**

**SGRE are looking for local
supplier in the following
areas:**

Iron workers

Pipe fitter

Sewer systems

Electricians

Carpenters

Waste Management

Infrastructure companies for preps at site.

SGRE are looking for local supplier in the following areas:

Ad hoc suppliers

Cleaning

Taxi, car rental, shuttlebus services

Accommodation (Hotel B&Bs, Motel, etc.)

Food services

Construction/Installation

**SGRE are looking for local
supplier in the following
areas:**

Equipment

Cranes

Loaders

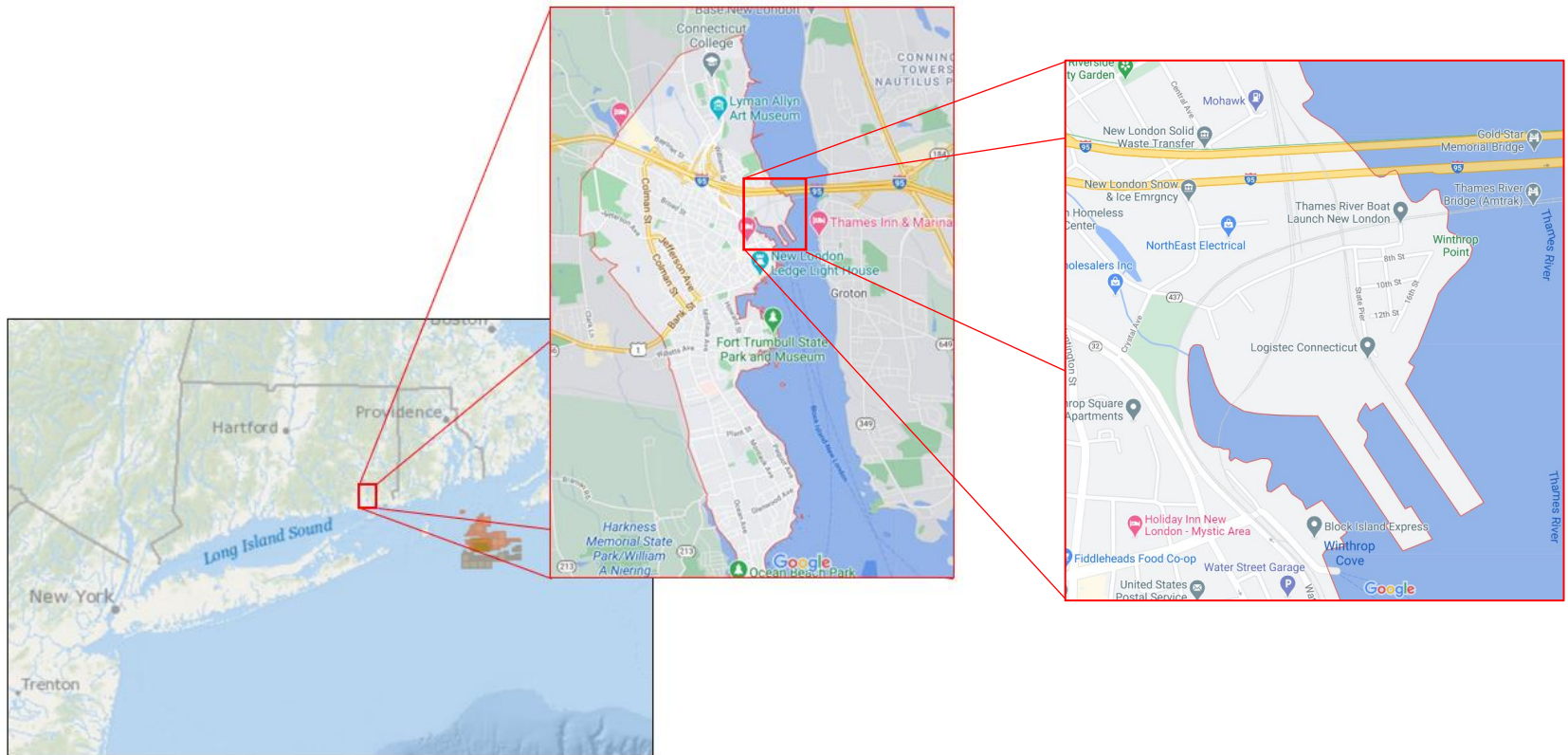
Local shops

Local hires

**Construction / Site
introduction**

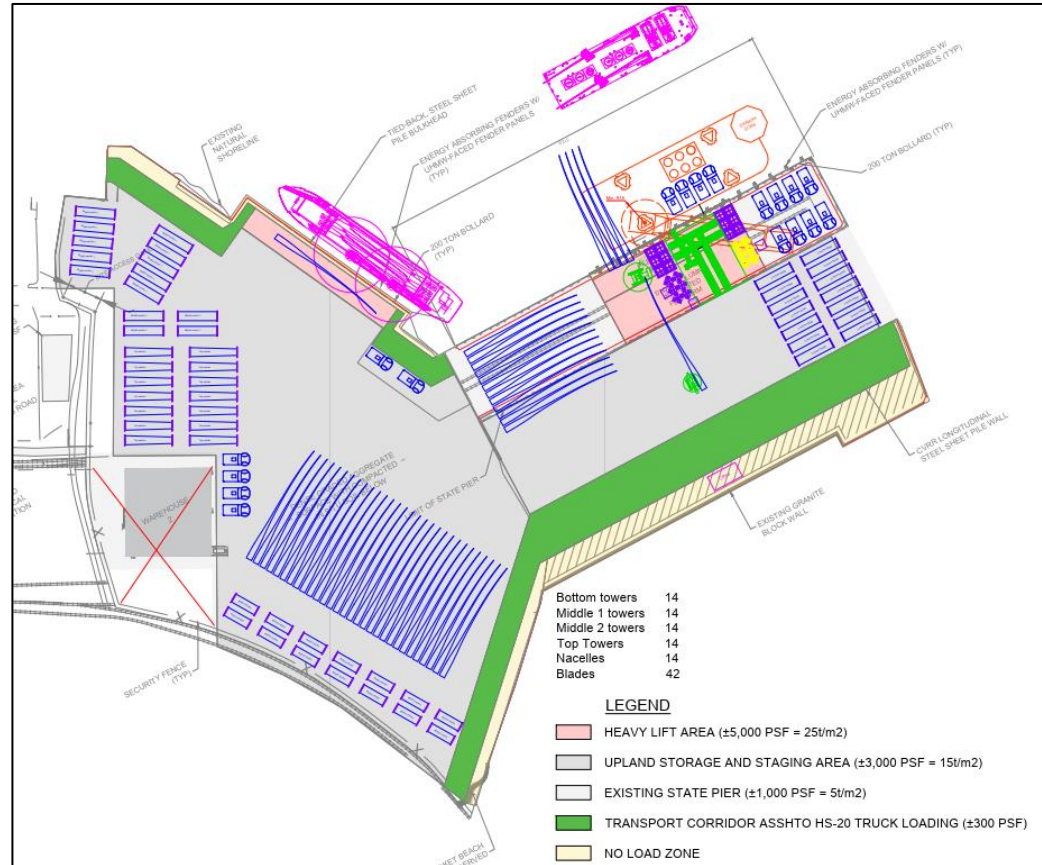
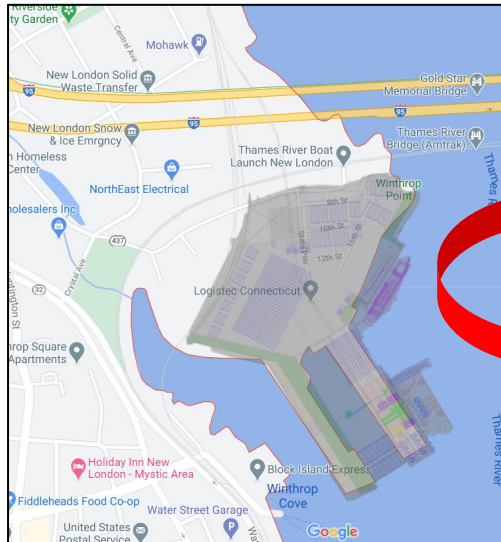
Pre-Assembly Concept New London, CT

~60km from Offshore Site



Pre-Assembly Concept New London, CT

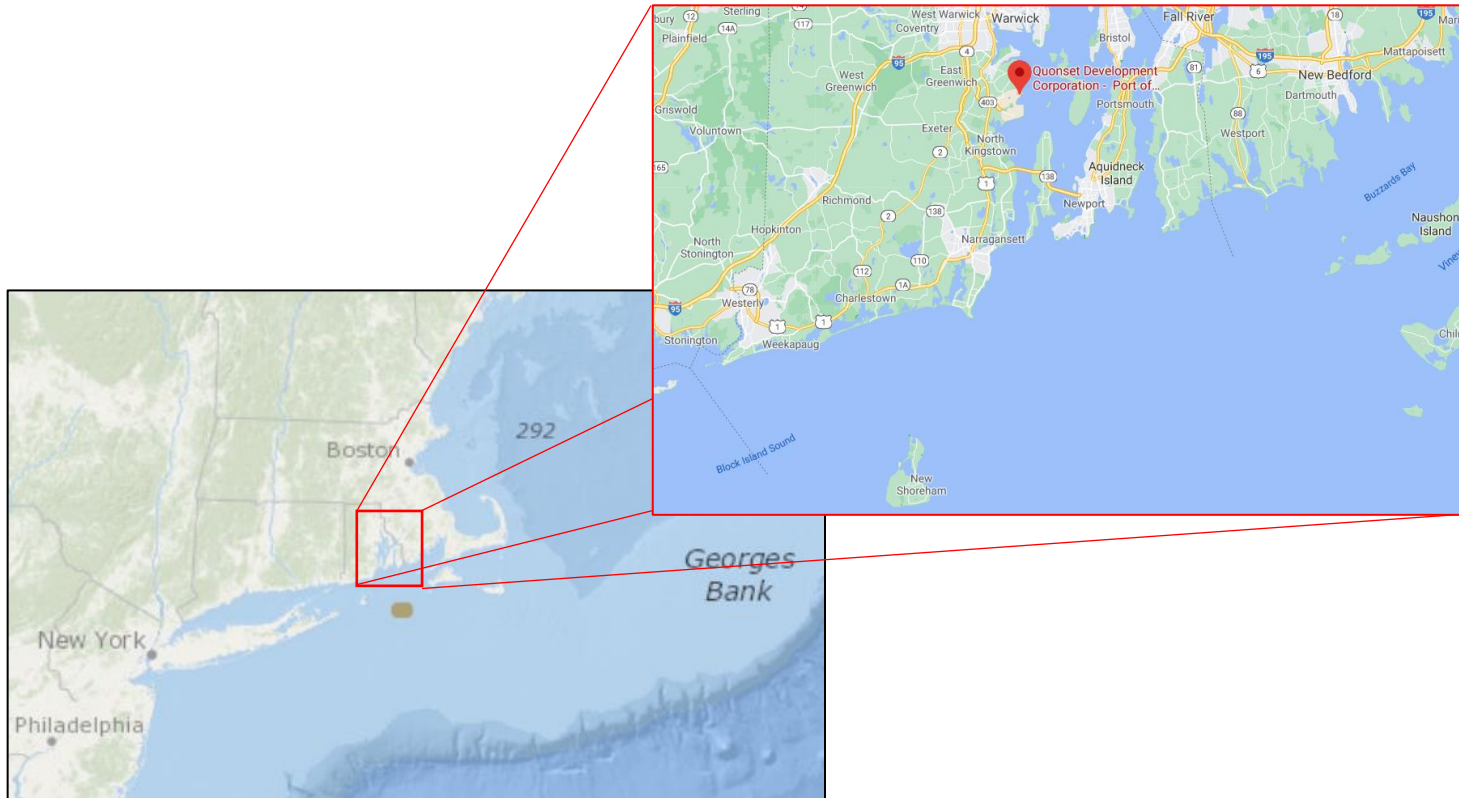
~60km from Offshore Site



Commissioning and Commissioning Harbor concept

Commissioning Harbor

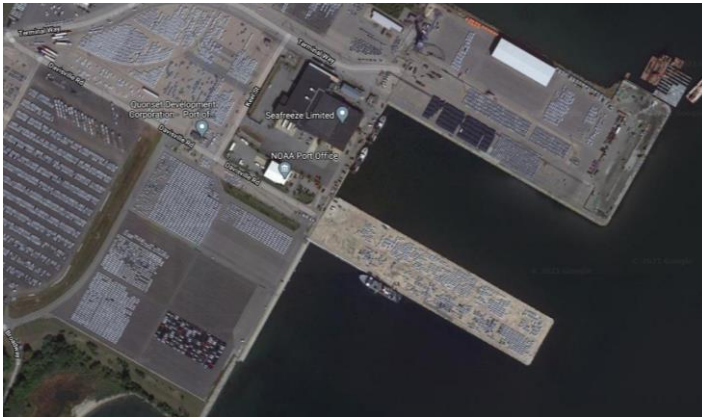
~90km from Offshore Site



Commissioning and Commissioning Harbor concept

Commissioning Harbor

~90km from Offshore Site



MS Forms
Local supplier's input

