

# New York Supplier Forum

## O&M Strategy and Scopes Description

**Sunrise  
Wind**

Powered by  
Ørsted &  
Eversource



# Long term Orsted Operations Set-up - Northeast

## Operations strategy

- **OPS regional Hub and Ops HQ established in E. Setauket**
- **Service Operating Vessel (SOV) service train concept** operating from Port Jefferson and Quonset and working throughout South Fork, Revolution and Sunrise Wind
- **Troubleshooting** performed by SOV, offshore Crew Transfer Vessel (CTV) and SOV Daughter Craft

## Rhode Island facility:

- Crew exchanges via CTV/SOV
- Main CTV port

Quonset, RI

Port Jefferson / E. Setauket, NY

## Regional Hub & HQ:

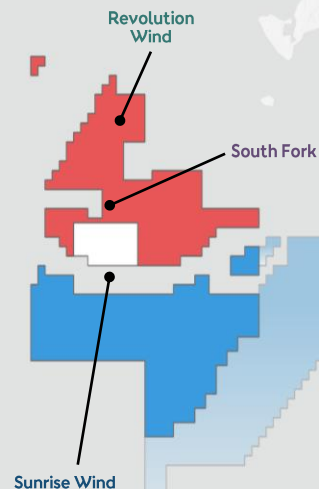
- SOV port calls
- Onshore hub jobs
- Direct offshore jobs
- Indirect logistics jobs

Montauk, NY

O&M Support

## Operations Commencement dates

- **South Fork:** 2023
- **Rev. Wind:** 2025; SOV delivery
- **Sunrise Wind:** 2025



## Facility Support Services at 22 Research Way – East Setauket

- Facility Support Services are required to enable daily operations out of the O&M Hub at 22 Research Way
- Occupy late '23
- Specific activities include:
  - Building Maintenance (M&E, Fire, Safety, IT & AV Systems)
  - Grounds (internal /external landscaping, snow plow, de-ice, pest control)
  - Cleaning (Window, cleaning supplies, internal cleaning)
  - Food service (catering)
  - Waste Management (General, metal, chemicals, confidential)
  - Connex containers
  - Forklift maintenance



# O&M Procurement Agenda

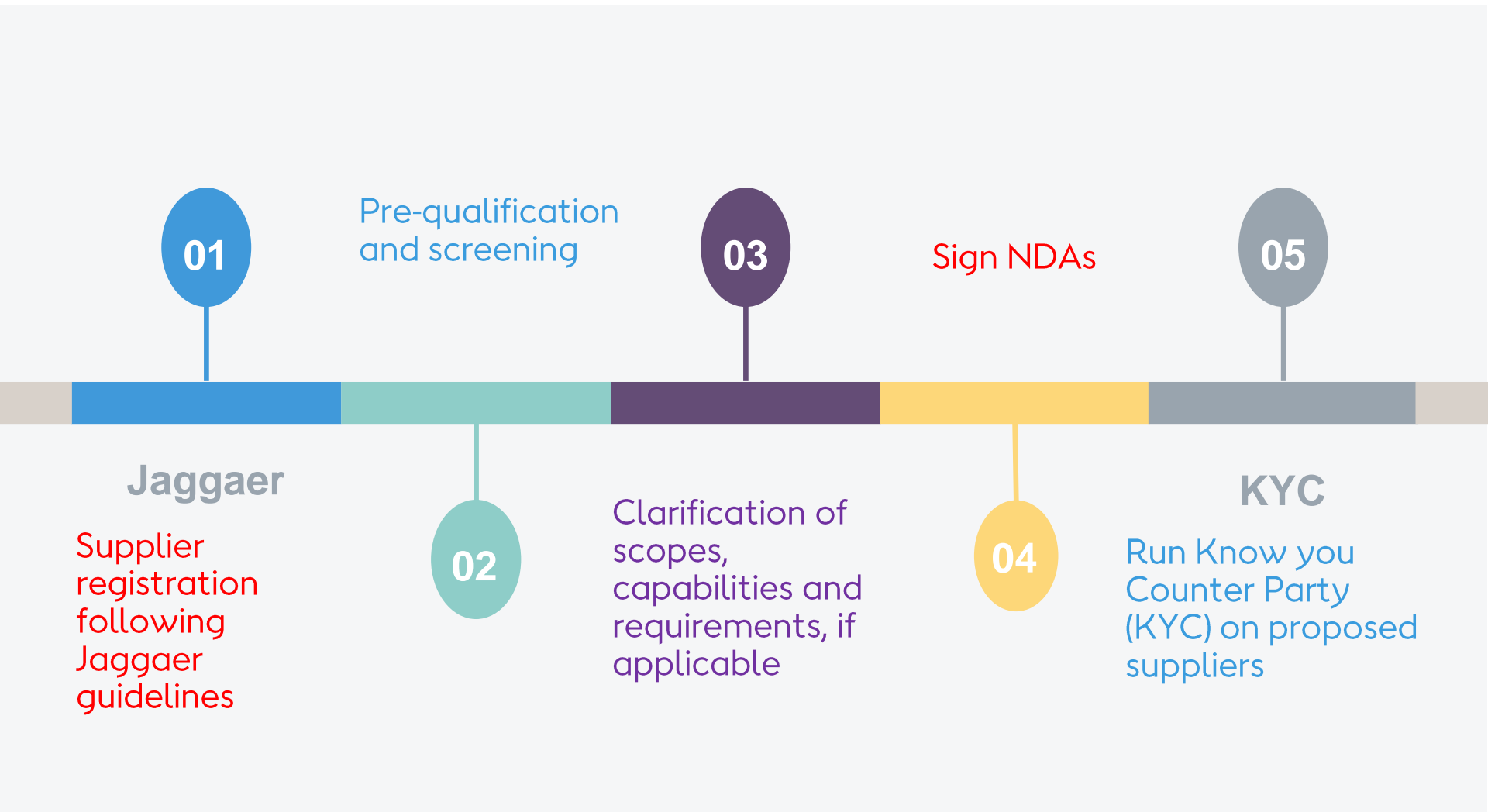
## Agenda

- Press Release on Aug 10, 2022: **Ørsted extends its 100% renewable electricity target and expectations to our strategic suppliers**
- Supplier registration on Jaggaer (please use the link below)
- Clarification of supplier capabilities and definitions
- KYC (Know Your Counterpart)
- Procurement process, scopes/categories and timeline
- E-Auctions / E- Tendering (Jaggaer)
- More details to come in next event – tentative April 2023
- Training requirements for technicians and CTV/ SOV access provided to suppliers

## Jaggaer registration and onboarding for suppliers

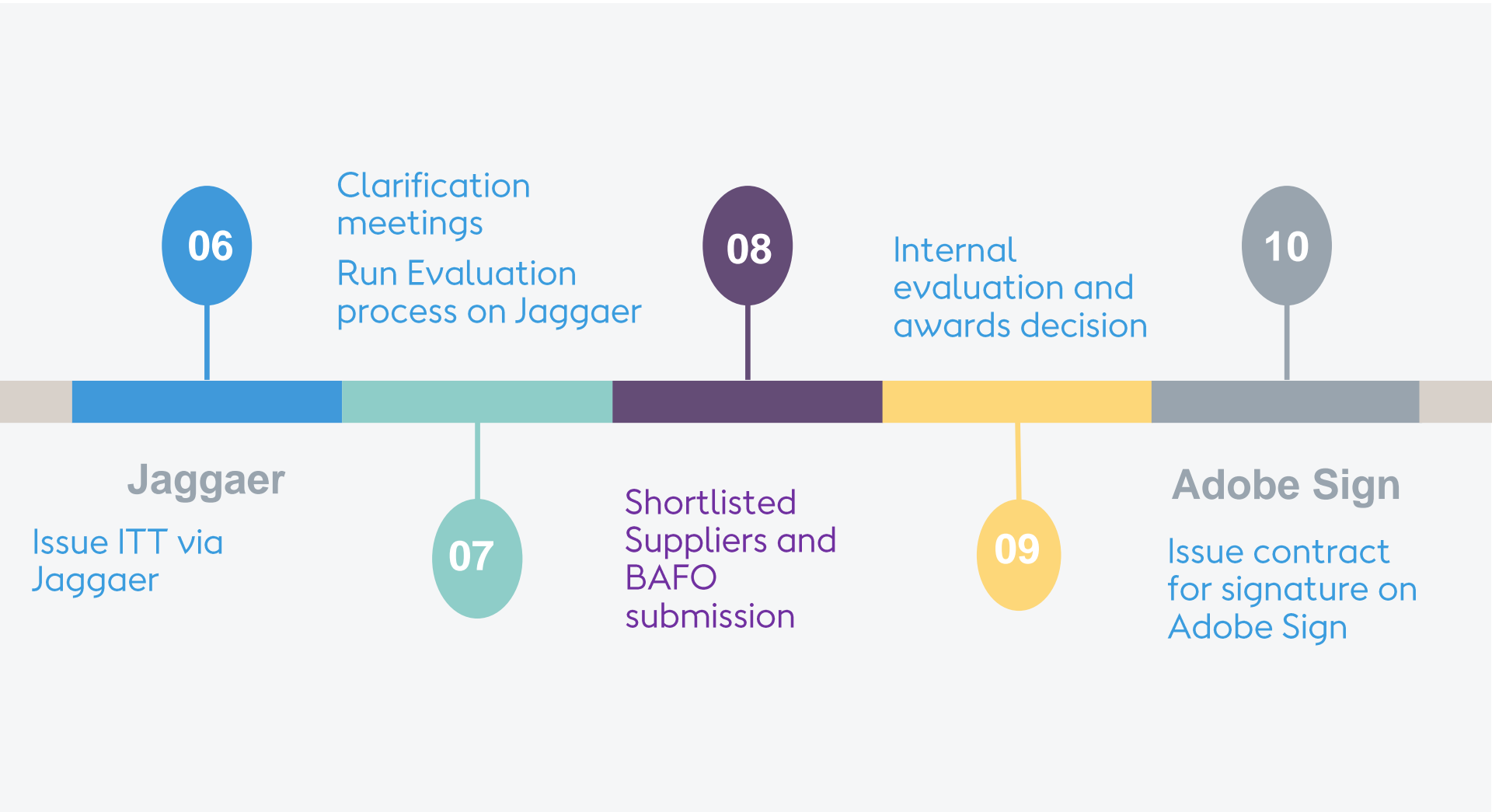
[Ørsted Procurement Portal \(orstedprocurement.com\)](https://orstedprocurement.com)

# Procurement Process: Tender Workflow



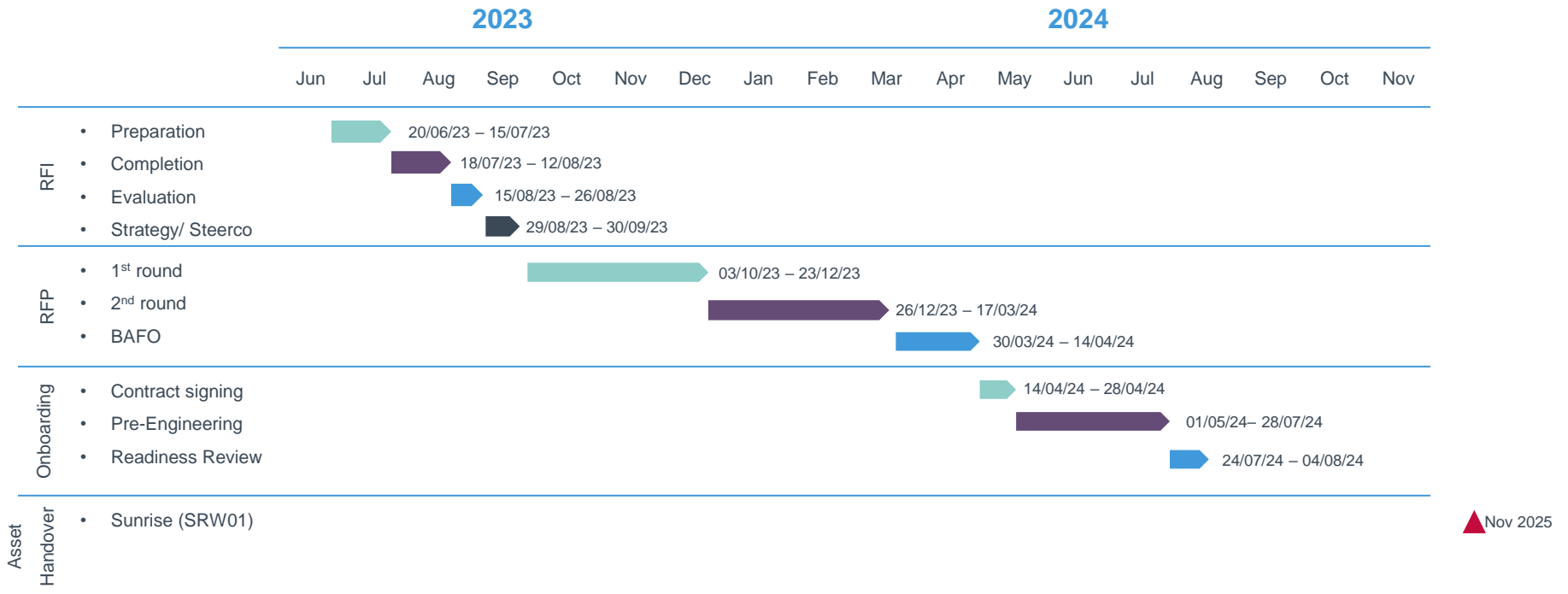
- Orsted
- Suppliers
- Orsted & Suppliers

# Tender Workflow – Continued



ITT – Instructions to Tender  
BAFO – Best And Final Offer

# Tentative SRW Procurement Tender Timeline: O&M Parts and Services



## Notes:

- The above timeline is tentative and covering the overall spares and services
- Individual tenders timeline to be developed further
- Overall Procurement process can take between 12-20 weeks depending on the complexity of scopes

# NEP Supply of Components Parts and Tools

- Potential Non-turbine or non -OEM related components
- Main Categories of components and parts
  - Consumables & Fasteners
  - Tooling
  - Lifting
  - HSE
- Separate RFIs/RFPs for different categories and sub-categories
- Timeline for SRW spare parts to be defined. Estimated COD Q2 2025.
- Overall Procurement Tender process 12-20 weeks from vendor qualification to contract signatures.



## Parts and Tools (Examples)

| Categories           | Sub-Categories                                    |
|----------------------|---|
| Hydraulics & Cooling | Cylinders   |
|                      | Accumulators                                      |
|                      | Pumps   |
|                      | Coolers & Fans                                    |
|                      | Flexibles   |
|                      | Pipe Work & Fixations                             |
|                      | Valves & Stoppers                                 |
| Consumers & Fastners | Oil & Grease                                      |
|                      | Gasket, Seals & Rings                             |
|                      | Coolants  |
|                      | Mounting & Assembly Material<br>& Filter Material |
|                      | Cleaners & Solvents                               |
|                      | Batteries   |
|                      |   |
| Tooling              | Cutting Tools                                     |
|                      | Abrasives & Power Tools                           |
|                      | Hydraulic & Pneumatic Equipment                   |
|                      | Tooling_Precision & Laboratory Equipment          |
|                      | Workshop Equipment                                |
|                      | Hand Tools  |
|                      | Janitorial & Hygiene                              |
|                      | Welding   |

# Blade Inspections (Scheduled and Unscheduled inspections)

- SGRE DD11-200 turbine type, 97M long blade, 43 ton each
- Estimated date for Blade inspections Q3 2025 (might have opportunities for Southfork project for earlier than Q3 2025)
- Service contracts could be 3 +1 +1 (years) and so on
- External Inspection
  - General Visual Inspection (GVI)
  - Close Visual Inspection (CVI)
  - Non-Destructive Test (NDT) – e.g. Tap testing
- Internal Inspection
  - Thermal imaging
  - NDT e.g. Tap testing
  - LPS (Lightning protection system)



Rope Access

Ground Based

Piloted Drones

Autonomous Drones

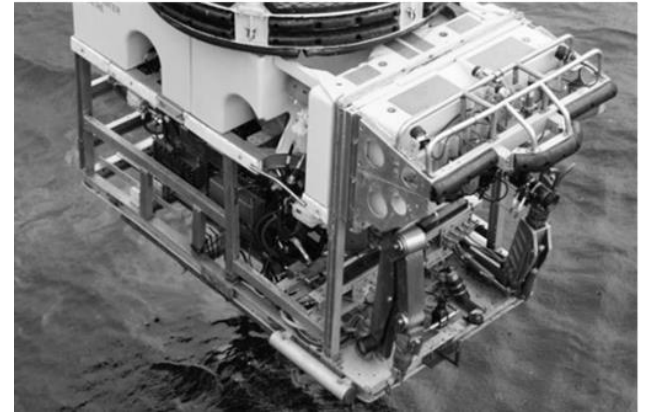
## Balance of Plant – Above Water Services

- Scheduled and unscheduled maintenance and repair support
- Offshore Cleaning Services: Foundation, Ladder and Transition Piece (PCM)
- Structural Inspections Above Water (IM)
- Statutory Inspections: (PCM)
- Lifts, hold-points, cranes, rigging etc
- Offshore Painting Services (TPM)
- General Maintenance Services/Concrete Repairs /Ladder Maintenance
- Minor mechanic or structural retrofits
- Fuel Testing, transformer/Gearbox Oil Analysis



# Balance of Plant – Below Water Services

- Scheduled and unscheduled subsea inspections and repair support
- General Visual Inspection of underwater structures
- Marine Growth Inspection
- Inspection of Cathodic Protection System
- Close visual inspection of cable protection and route system



# Environmental and Consent Activities

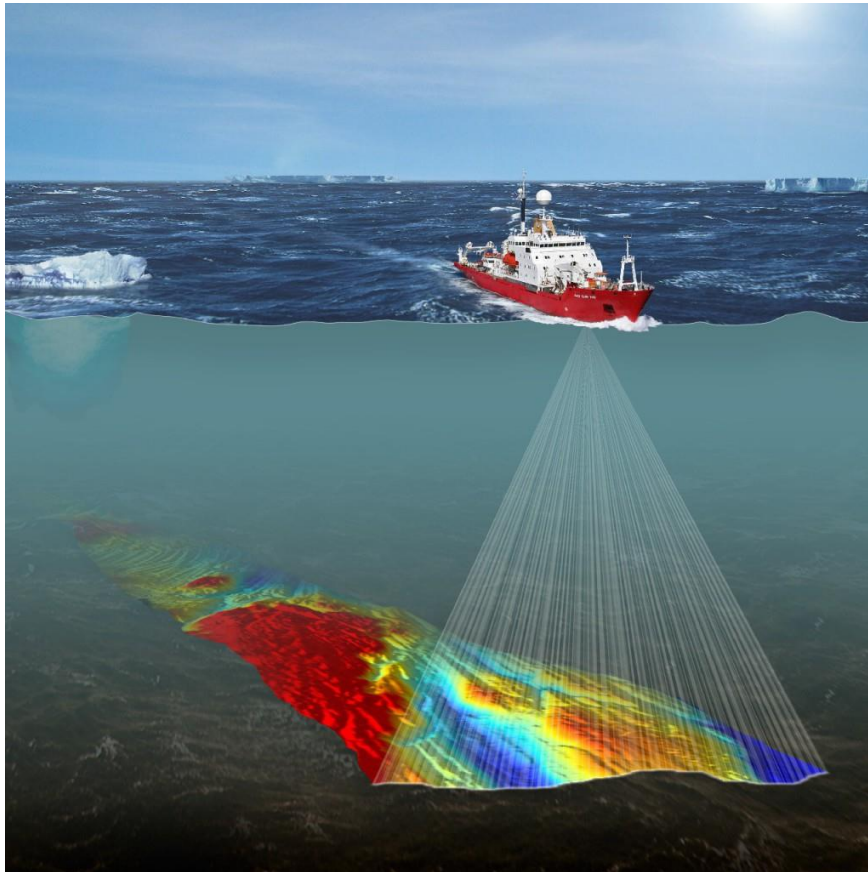
- Marine Licenses and Consent & Environmental surveys
- Aerial and avian assessments
- Radar Consultation (Airports)
- Navigation safety risk assessments
- Flora/Fauna/Mammal Studies
- Academic reviews
- Seabed Studies
- Public consultations and stakeholder engagement (such as fishermen approval)
- Land-owner management system





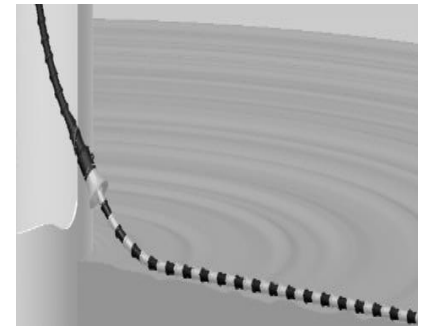
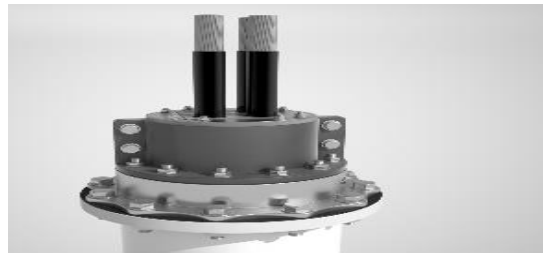
## Sea Bed Surveys (Bathymetric)

- A bathymetric survey is required to assess sea floor conditions prior to dispatching a jack-up vessel; likely "as needed"
- Service Jack ups need to be able to operate in the relevant water depth and to handle the required sizes of components



# Cabling Contingency Management

- Unscheduled support to cabling fault finding, array and export cable repair or replacement, contingency spares and cable associated spare parts
- Confirmation of fault location and type
- Turnkey repair for all subsea cable faults – including HSE, jointing and offshore vessel and marine services. Applies only to major failures/replacements
- Supply of components to repair high risk failures.
  - Major components include high value items like Cables, Joints & Cable protection
  - Minor Components include typically low value but high impact (outage duration) items like hang offs, T connectors & Joint Resins



**More scopes to be defined and clarified in next event.  
Please stop by at the booth for more details.**

**Thank you!**