

# Coom Wind Farm

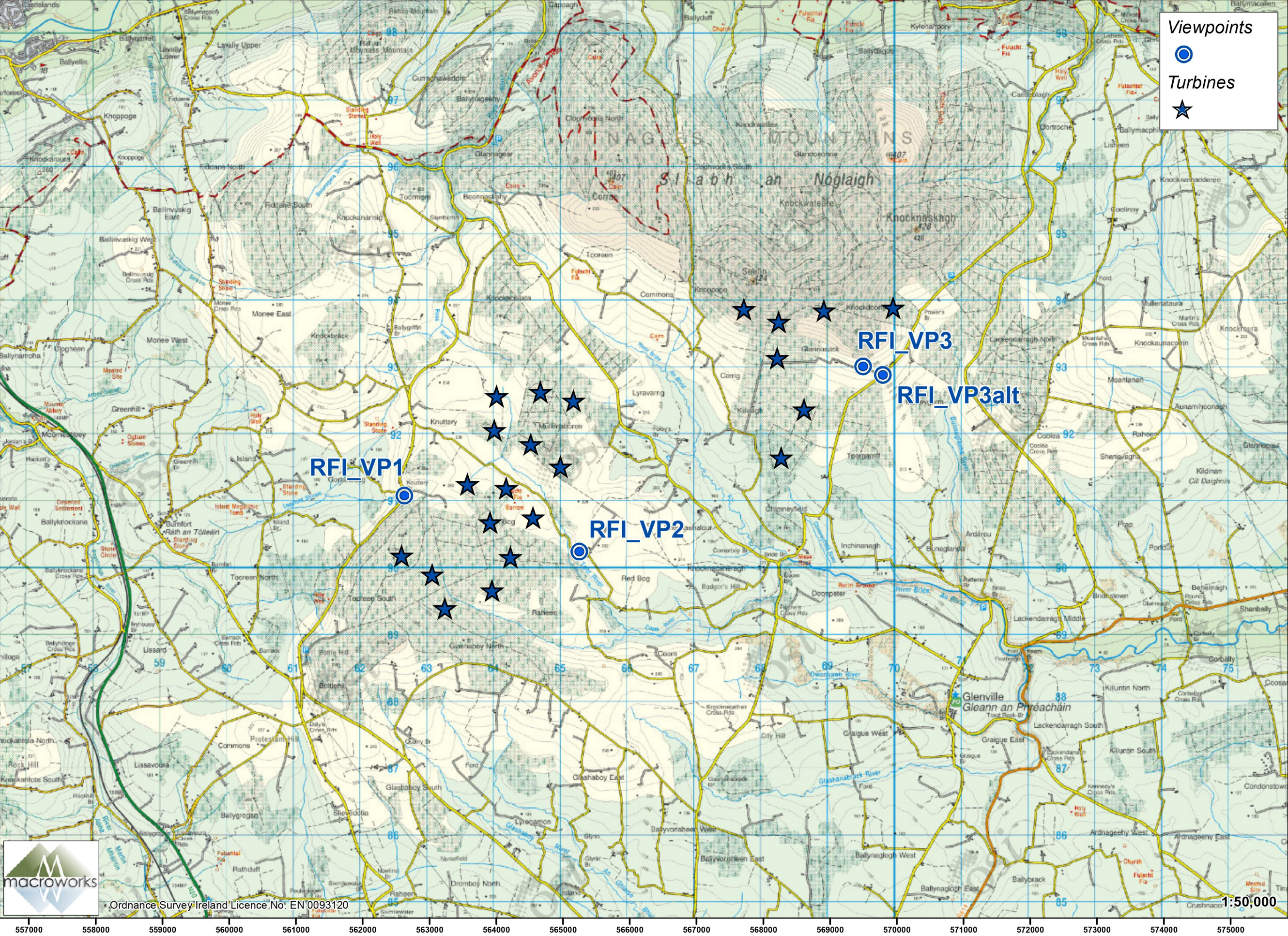
## RFI Photomontages

August 2021





RFI viewpoint locations selected for the Coom Energy Park project



# Index of Imagery

**VP1: Local road at Tooreen South**  
Page 1: Map and Information  
Page 2: Existing View  
Page 3: Photomontage View  
Page 4: Existing View  
Page 5: Photomontage View  
Page 6: Cumulative Photomontage View  
Page 7: Cumulative Photomontage View

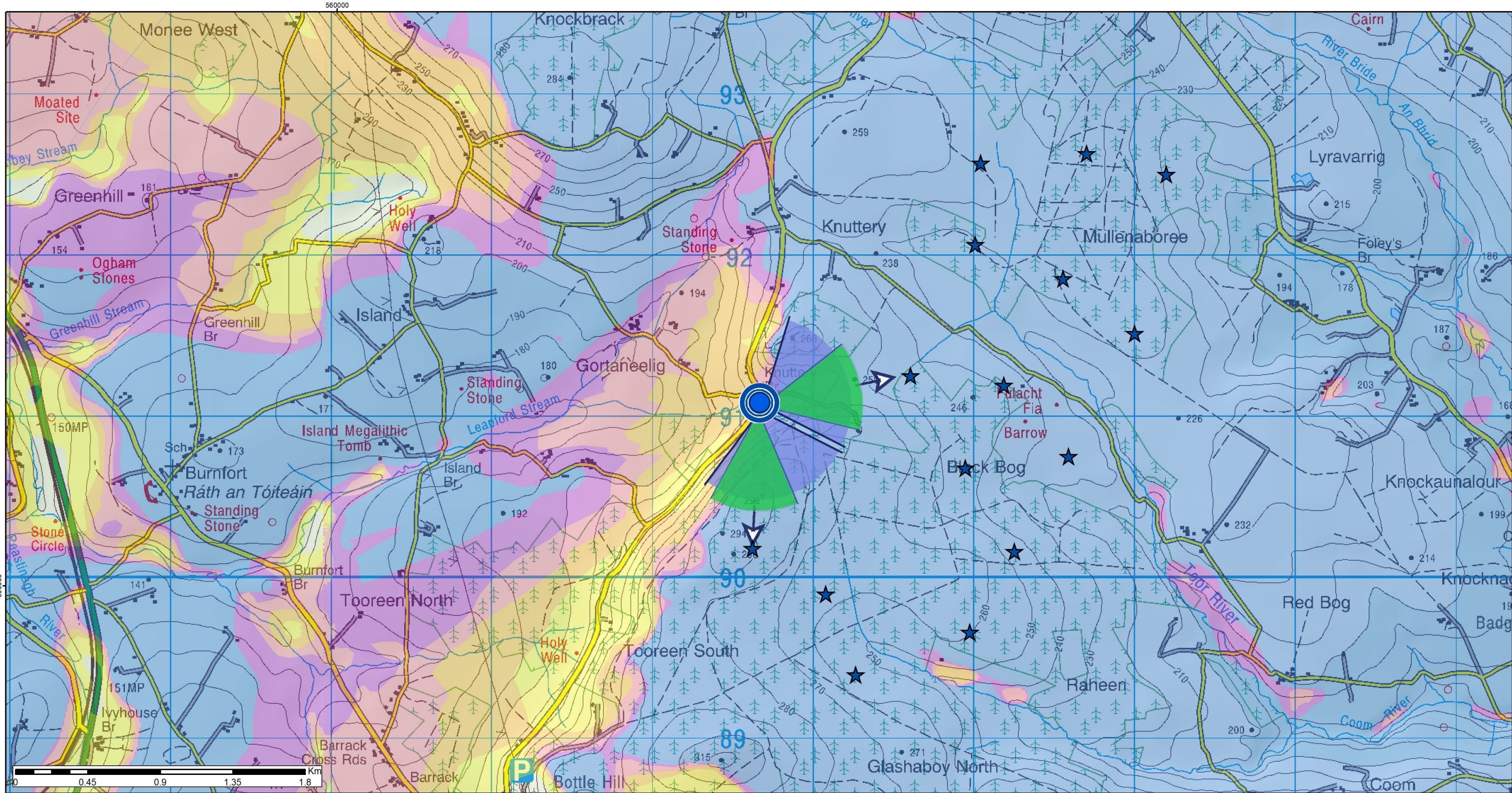
**VP2: Local road at Coom**  
Page 1: Map and Information  
Page 2: Existing View  
Page 3: Photomontage View  
Page 4: Existing View  
Page 5: Photomontage View  
Page 6: Existing View  
Page 7: Photomontage View  
Page 8: Cumulative Photomontage View  
Page 9: Cumulative Photomontage View

**VP3: Local laneway at Toorgariff**  
Page 1: Map and Information  
Page 2: Existing View  
Page 3: Photomontage View  
Page 4: Existing View  
Page 5: Photomontage View  
Page 6: Existing View  
Page 7: Photomontage View  
Page 8: Cumulative Photomontage View  
Page 9: Cumulative Photomontage View

**VP3 alt: Local road at Moneygorm**  
Page 1: Map and Information  
Page 2: Existing View  
Page 3: Photomontage View  
Page 4: Existing View  
Page 5: Photomontage View  
Page 6: Existing View  
Page 7: Photomontage View  
Page 8: Cumulative Photomontage View  
Page 9: Cumulative Photomontage View



Coom Green Energy Park - Landscape and Visual Impact Assessment



Scale 1:125,000

Positional Information

National Grid Cordinate (ITM)  
Easting: 562624  
Northing: 591139  
Elevation: 229.4 m

Photo Capture Information

Date: 13/07/2021  
Time: 12:29  
Camera: Canon 5D Mark II  
Lens / Focal Length: Fixed 50mm  
Camera Height: 1.7m (AGL)

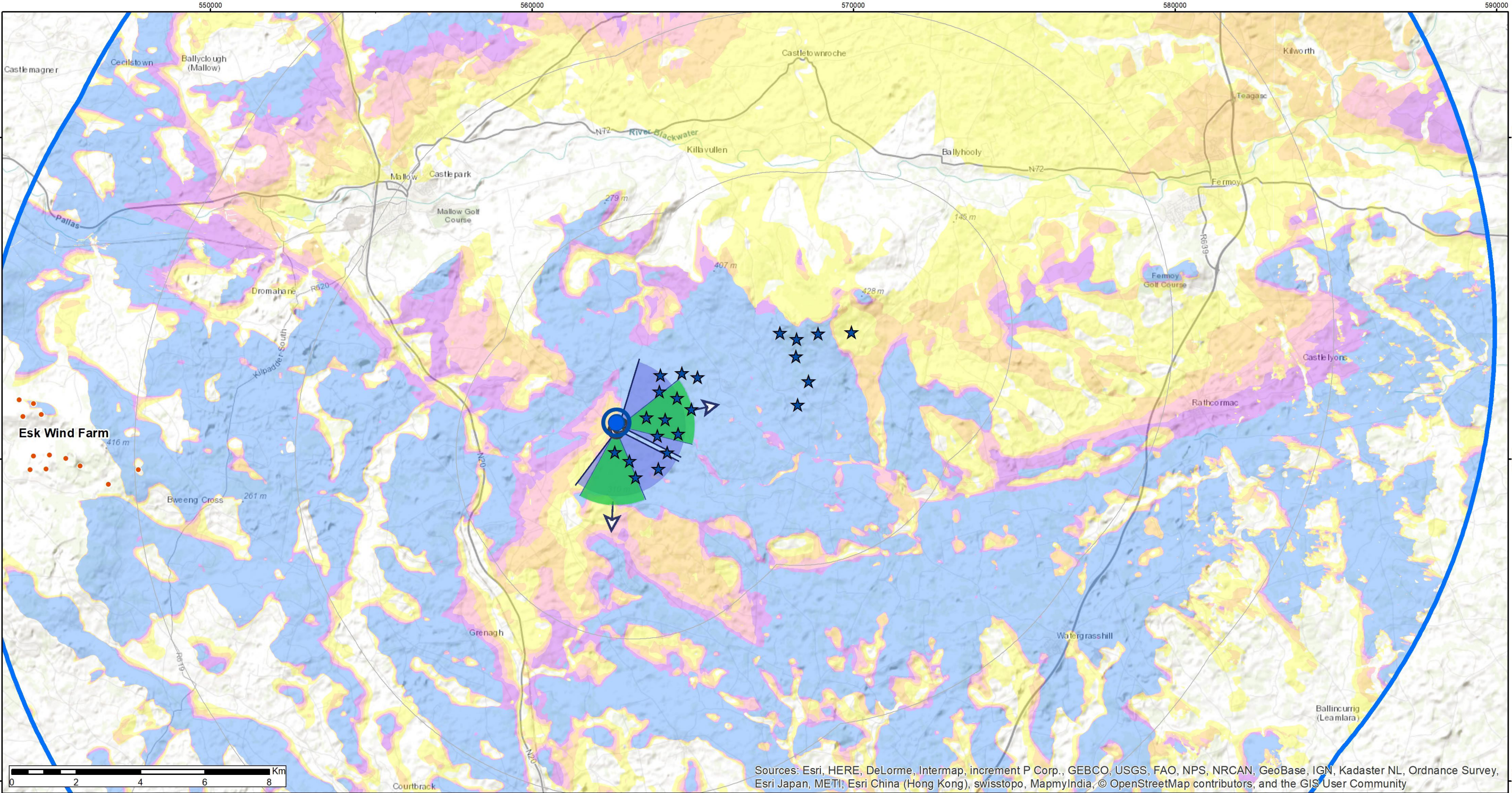
Turbine Information

Turbine Dimensions  
Nacelle Height: 100.0 m  
Rotor Diamater: 138.0 m  
Tip Height: 169.0 m

Visibility Information

Number of Nacelles Theoretically Visible: 4  
Number of Nacelles Actually Visible: 2  
Angle of View Theoretically Occupied by Turbines: 78°  
Angle of View Actually Occupied by Turbines: 13°  
Distance to Nearest Turbine: 0.9km km  
Distance to Nearest Visible Turbine: 0.9km km

Local road at Tooreen South



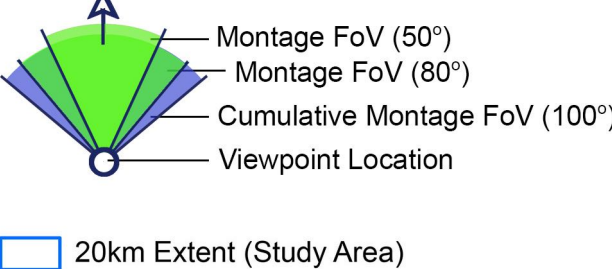
Scale 1:25,000

ZTV Parameters

Turbine Blade Tip Height: 169.0 m  
Observer Height - Eye Level: 1.7 m  
Height Data Source: OSI 10m DTM  
Height Data Resolution: 10m

DTM Height data does not account for non-landform features such as vegetation and buildings

★ Proposed Turbine Locations



Theoretical Turbine Visibility

★ Proposed Coom Turbines  
No. Turbines Visible  
1 - 5  
6 - 9  
10 - 13  
14 - 17  
18 - 22  
Cumulative Windfarm Status  
● Eske Wind Farm (Existing)

Pages to Follow for this Viewpoint

Existing & Montage Views: 2 of each  
Landscape Context Views: 2

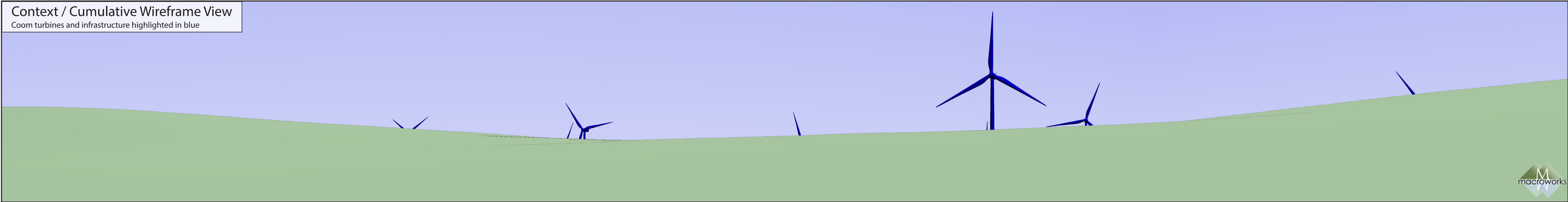




Context / Cumulative Montage View



Context / Cumulative Wireframe View  
Coom turbines and infrastructure highlighted in blue



This is a cylindrical panorama captured, prepared and presented in accordance with the guidance set out in the Scottish Natural Heritage 2017 guidance 'Visual Representation of Wind Farms'.  
To view this image correctly, place on a flat surface and move along its length whilst viewing from a perpendicular viewing distance of 35cm.





This is a cylindrical panorama captured, prepared and presented in accordance with the guidance set out in the Scottish Natural Heritage 2017 guidance 'Visual Representation of Wind Farms'.  
To view this image correctly, place on a flat surface and move along its length whilst viewing from a perpendicular viewing distance of 35cm.





This is a planar panorama captured, prepared and presented in accordance with the guidance set out in the Scottish Natural Heritage 2017 guidance 'Visual Representation of Wind Farms'.  
To view this image correctly, place on a flat surface and view from a comfortable arms length (approx 50cm).



Montage View



This is a planar panorama captured, prepared and presented in accordance with the guidance set out in the Scottish Natural Heritage 2017 guidance 'Visual Representation of Wind Farms'. To view this image correctly, place on a flat surface and view from a comfortable arms length (approx 50cm).





Existing View



This is a planar panorama captured, prepared and presented in accordance with the guidance set out in the Scottish Natural Heritage 2017 guidance 'Visual Representation of Wind Farms'.  
To view this image correctly, place on a flat surface and view from a comfortable arms length (approx 50cm).





Montage View

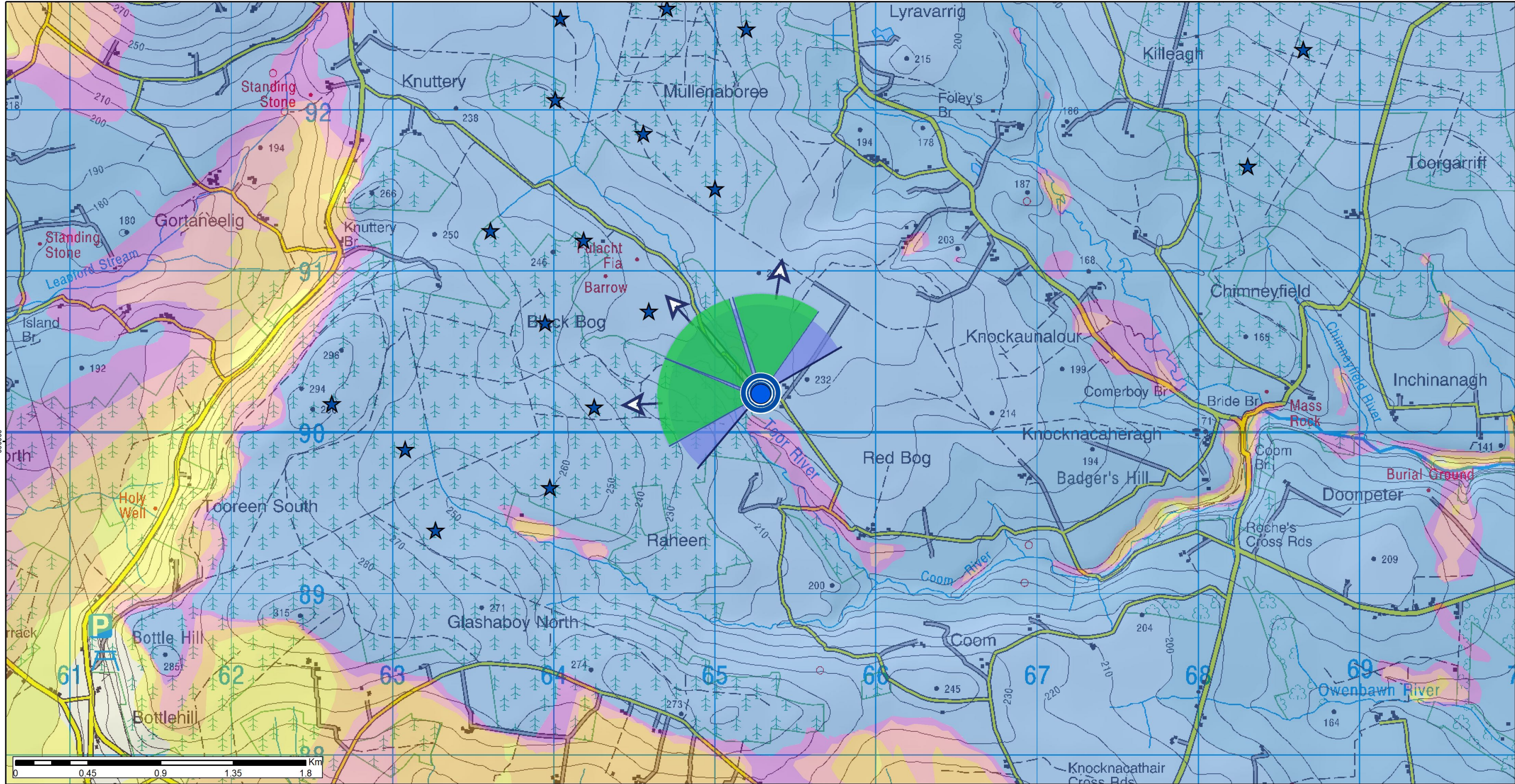


This is a planar panorama captured, prepared and presented in accordance with the guidance set out in the Scottish Natural Heritage 2017 guidance 'Visual Representation of Wind Farms'. To view this image correctly, place on a flat surface and view from a comfortable arms length (approx 50cm).





Coom Green Energy Park - Landscape and Visual Impact Assessment



Positional Information

National Grid Cordinate (ITM)  
Easting: 565243  
Northing: 590299  
Elevation: 220.7 m

Photo Capture Information

Date: 13/07/2021  
Time: 12:42

Camera: Canon 5D Mark II  
Lens / Focal Length: Fixed 50mm  
Camera Height: 1.7m (AGL)

Turbine Information

Turbine Dimensions  
Nacelle Height: 100.0 m  
Rotor Diamater: 138.0 m  
Tip Height: 169.0 m

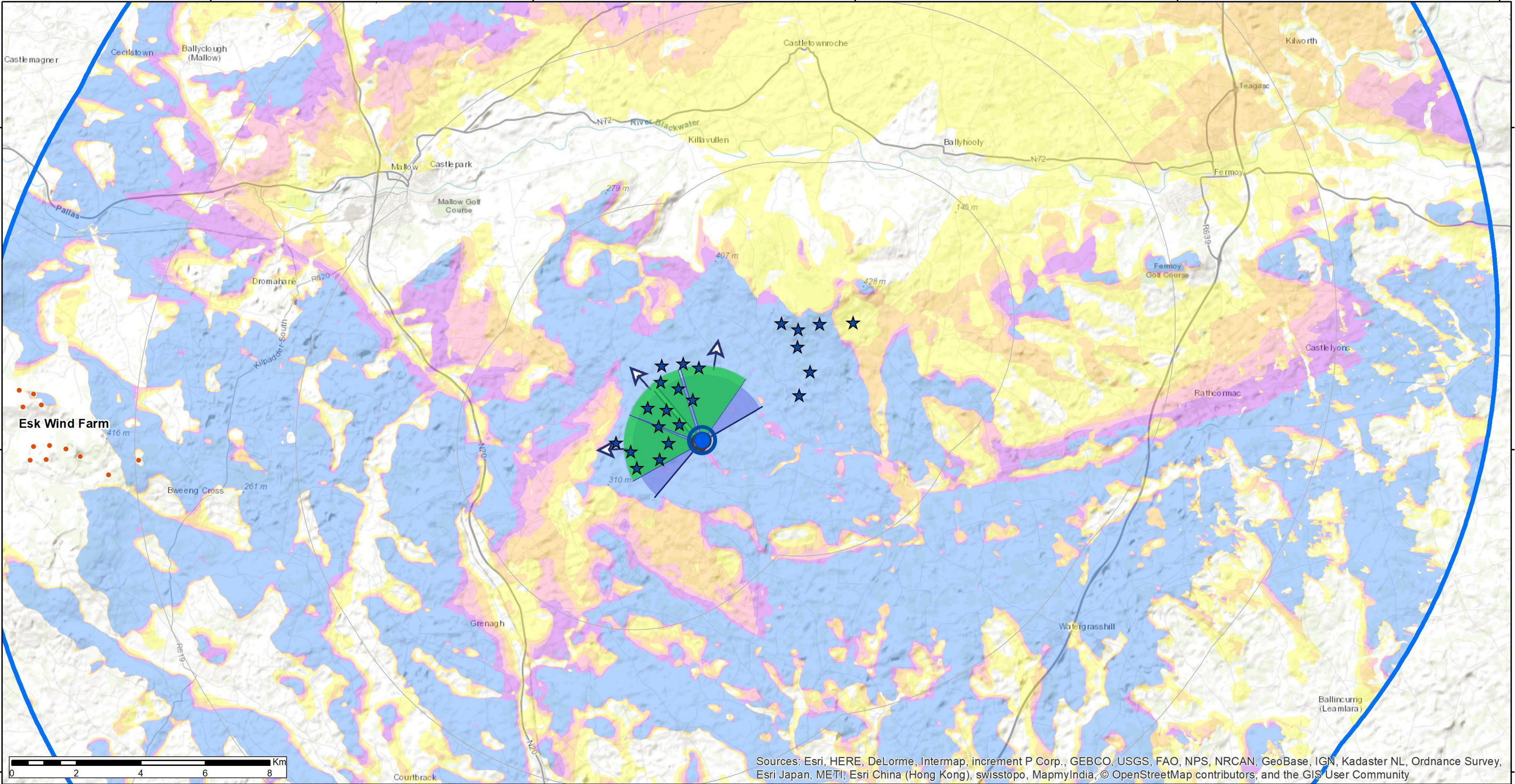
Visibility Information

Number of Nacelles Theoretically Visible: 19  
Number of Nacelles Actually Visible: 15

Angle of View Theoretically Occupied by Turbines: 175°  
Angle of View Actually Occupied by Turbines: 117°

Distance to Nearest Turbine: 0.9km km  
Distance to Nearest Visible Turbine: 0.9km km

Local road at Coom



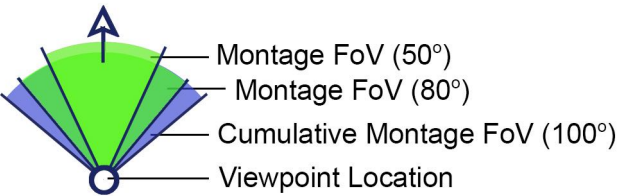
ZTV Parameters

Turbine Blade Tip Height: 169.0 m  
Observer Height - Eye Level: 1.7 m

Height Data Source: OSI 10m DTM  
Height Data Resolution: 10m

DTM Height data does not account for non-landform features such as vegetation and buildings

Proposed Turbine Locations



20km Extent (Study Area)

Theoretical Turbine Visibility

Proposed Coom Turbines

No. Turbines Visible



Cumulative Windfarm Status

Eske Wind Farm (Existing)

Pages to Follow for this Viewpoint

Existing & Montage Views: 3 of each  
Landscape Context Views: 2

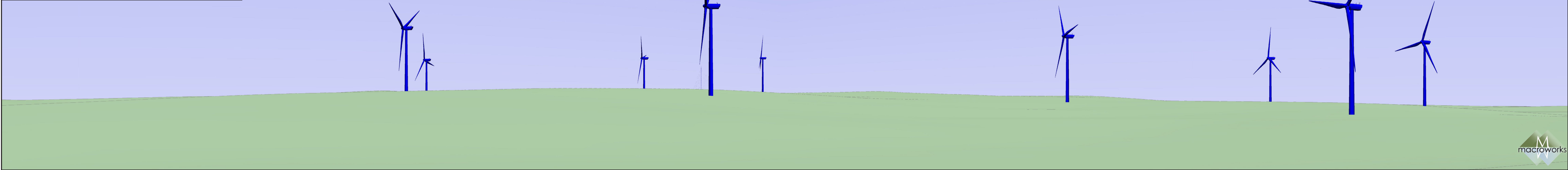




Context / Cumulative Montage View

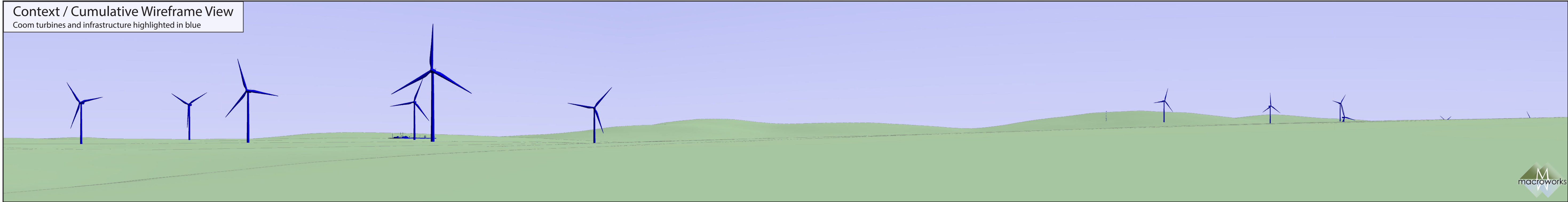


Context / Cumulative Wireframe View  
Coom turbines and infrastructure highlighted in blue



This is a cylindrical panorama captured, prepared and presented in accordance with the guidance set out in the Scottish Natural Heritage 2017 guidance 'Visual Representation of Wind Farms'.  
To view this image correctly, place on a flat surface and move along its length whilst viewing from a perpendicular viewing distance of 35cm.





This is a cylindrical panorama captured, prepared and presented in accordance with the guidance set out in the Scottish Natural Heritage 2017 guidance 'Visual Representation of Wind Farms'. To view this image correctly, place on a flat surface and move along its length whilst viewing from a perpendicular viewing distance of 35cm.





Existing View



This is a planar panorama captured, prepared and presented in accordance with the guidance set out in the Scottish Natural Heritage 2017 guidance 'Visual Representation of Wind Farms'.  
To view this image correctly, place on a flat surface and view from a comfortable arms length (approx 50cm).





Montage View



This is a planar panorama captured, prepared and presented in accordance with the guidance set out in the Scottish Natural Heritage 2017 guidance 'Visual Representation of Wind Farms'.  
To view this image correctly, place on a flat surface and view from a comfortable arms length (approx 50cm).





Existing View



This is a planar panorama captured, prepared and presented in accordance with the guidance set out in the Scottish Natural Heritage 2017 guidance 'Visual Representation of Wind Farms'.  
To view this image correctly, place on a flat surface and view from a comfortable arms length (approx 50cm).





Montage View



This is a planar panorama captured, prepared and presented in accordance with the guidance set out in the Scottish Natural Heritage 2017 guidance 'Visual Representation of Wind Farms'.  
To view this image correctly, place on a flat surface and view from a comfortable arms length (approx 50cm).



Existing View



This is a planar panorama captured, prepared and presented in accordance with the guidance set out in the Scottish Natural Heritage 2017 guidance 'Visual Representation of Wind Farms'.  
To view this image correctly, place on a flat surface and view from a comfortable arms length (approx 50cm).





Montage View

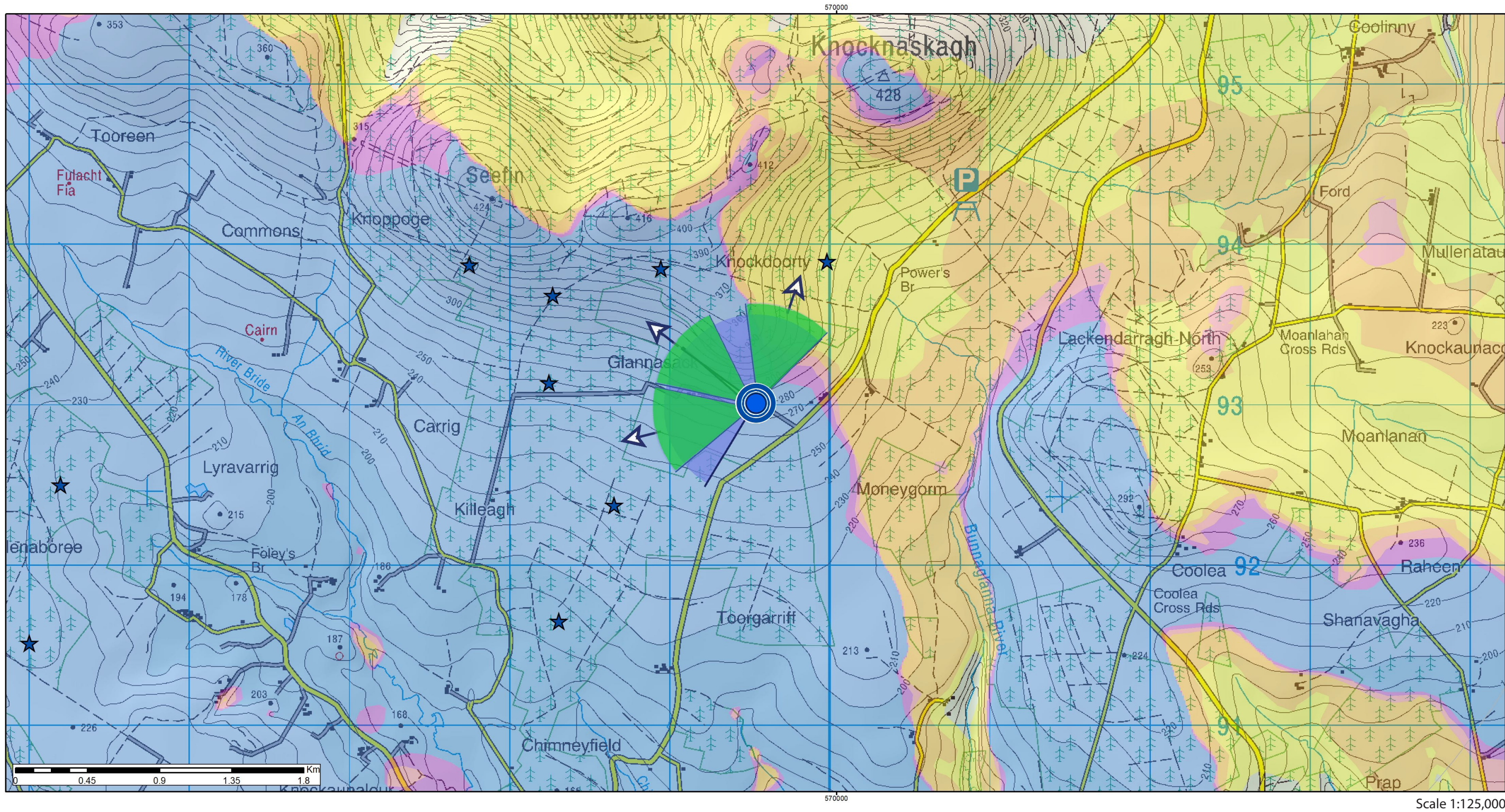


This is a planar panorama captured, prepared and presented in accordance with the guidance set out in the Scottish Natural Heritage 2017 guidance 'Visual Representation of Wind Farms'.  
To view this image correctly, place on a flat surface and view from a comfortable arms length (approx 50cm).





Coom Green Energy Park - Landscape and Visual Impact Assessment



Positional Information

National Grid Cordinate (ITM)  
Easting: 569496  
Northing: 593068  
Elevation: 279.3 m

Photo Capture Information

Date: 13/07/2021  
Time: 13:20  
Camera: Canon 5D Mark II  
Lens / Focal Length: Fixed 50mm  
Camera Height: 1.7m (AGL)

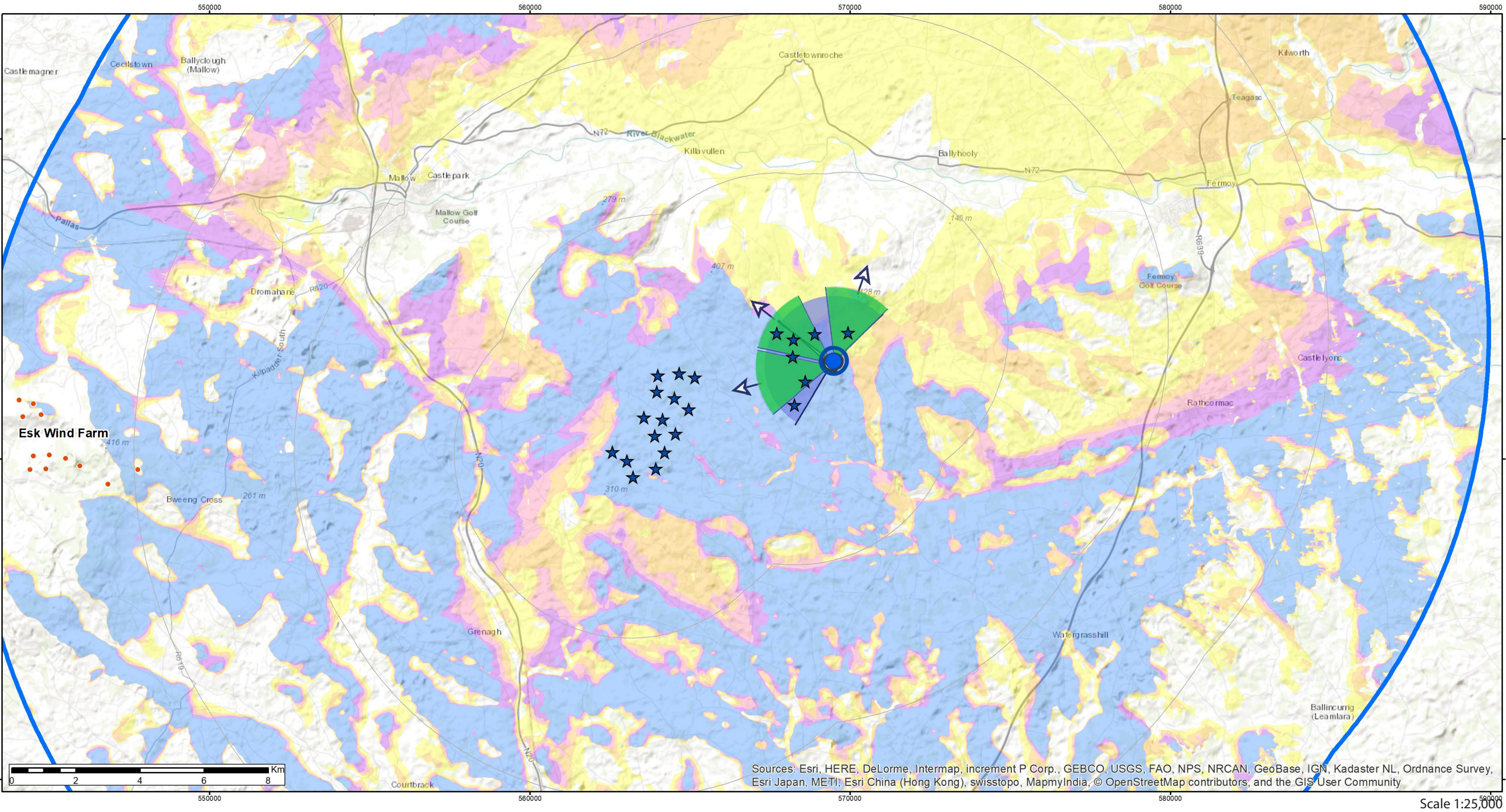
Turbine Information

Turbine Dimensions  
Nacelle Height: 100.0 m  
Rotor Diamater: 138.0 m  
Tip Height: 169.0 m

Visibility Information

Number of Nacelles Theoretically Visible: 22  
Number of Nacelles Actually Visible: 2  
Angle of View Theoretically Occupied by Turbines: 120°  
Angle of View Actually Occupied by Turbines: 22°  
Distance to Nearest Turbine: 1km km  
Distance to Nearest Visible Turbine: 1km km

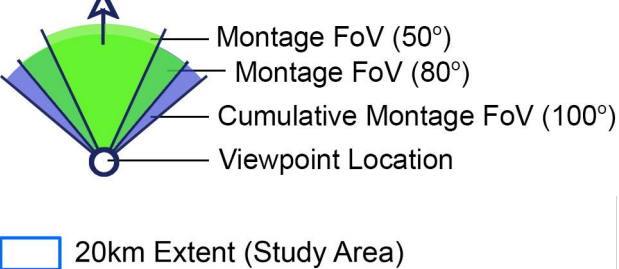
Local laneway at Toorgarriff



ZTV Parameters

Turbine Blade Tip Height: 169.0 m  
Observer Height - Eye Level: 1.7 m  
Height Data Source: OSI 10m DTM  
Height Data Resolution: 10m  
DTM Height data does not account for non-landform features such as vegetation and buildings

★ Proposed Turbine Locations



Theoretical Turbine Visibility

★ Proposed Coom Turbines  
No. Turbines Visible  
1 - 5  
6 - 9  
10 - 13  
14 - 17  
18 - 22  
Cumulative Windfarm Status  
Eske Wind Farm (Existing)

Viewpoint Ref: RFI VP3

Pages to Follow for this Viewpoint

Existing & Montage Views: 3 of each  
Landscape Context Views: 2

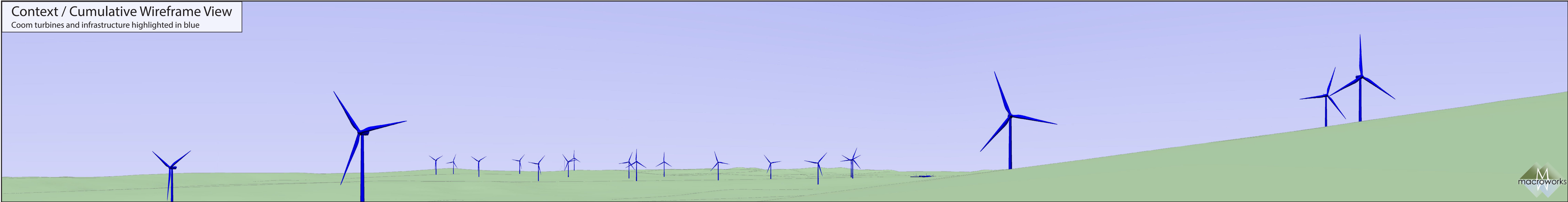




Context / Cumulative Montage View



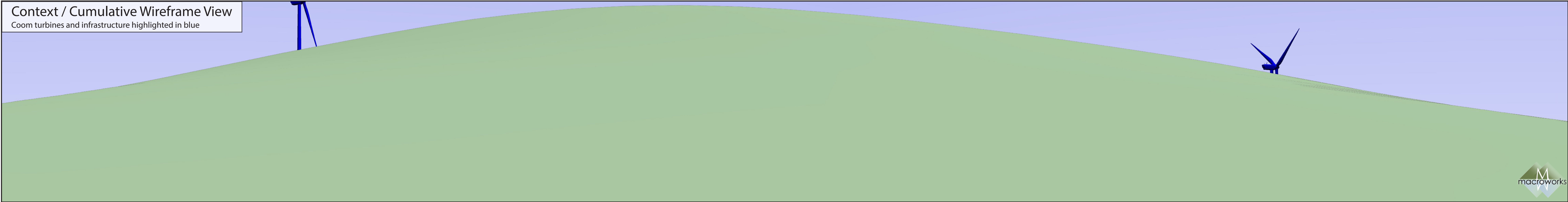
Context / Cumulative Wireframe View  
Coom turbines and infrastructure highlighted in blue



This is a cylindrical panorama captured, prepared and presented in accordance with the guidance set out in the Scottish Natural Heritage 2017 guidance 'Visual Representation of Wind Farms'. To view this image correctly, place on a flat surface and move along its length whilst viewing from a perpendicular viewing distance of 35cm.







This is a cylindrical panorama captured, prepared and presented in accordance with the guidance set out in the Scottish Natural Heritage 2017 guidance 'Visual Representation of Wind Farms'.  
To view this image correctly, place on a flat surface and move along its length whilst viewing from a perpendicular viewing distance of 35cm.





This is a planar panorama captured, prepared and presented in accordance with the guidance set out in the Scottish Natural Heritage 2017 guidance 'Visual Representation of Wind Farms'.  
To view this image correctly, place on a flat surface and view from a comfortable arms length (approx 50cm).





Montage View



This is a planar panorama captured, prepared and presented in accordance with the guidance set out in the Scottish Natural Heritage 2017 guidance 'Visual Representation of Wind Farms'. To view this image correctly, place on a flat surface and view from a comfortable arms length (approx 50cm).









Montage View



This is a planar panorama captured, prepared and presented in accordance with the guidance set out in the Scottish Natural Heritage 2017 guidance 'Visual Representation of Wind Farms'. To view this image correctly, place on a flat surface and view from a comfortable arms length (approx 50cm).





Existing View



This is a planar panorama captured, prepared and presented in accordance with the guidance set out in the Scottish Natural Heritage 2017 guidance 'Visual Representation of Wind Farms'.  
To view this image correctly, place on a flat surface and view from a comfortable arms length (approx 50cm).





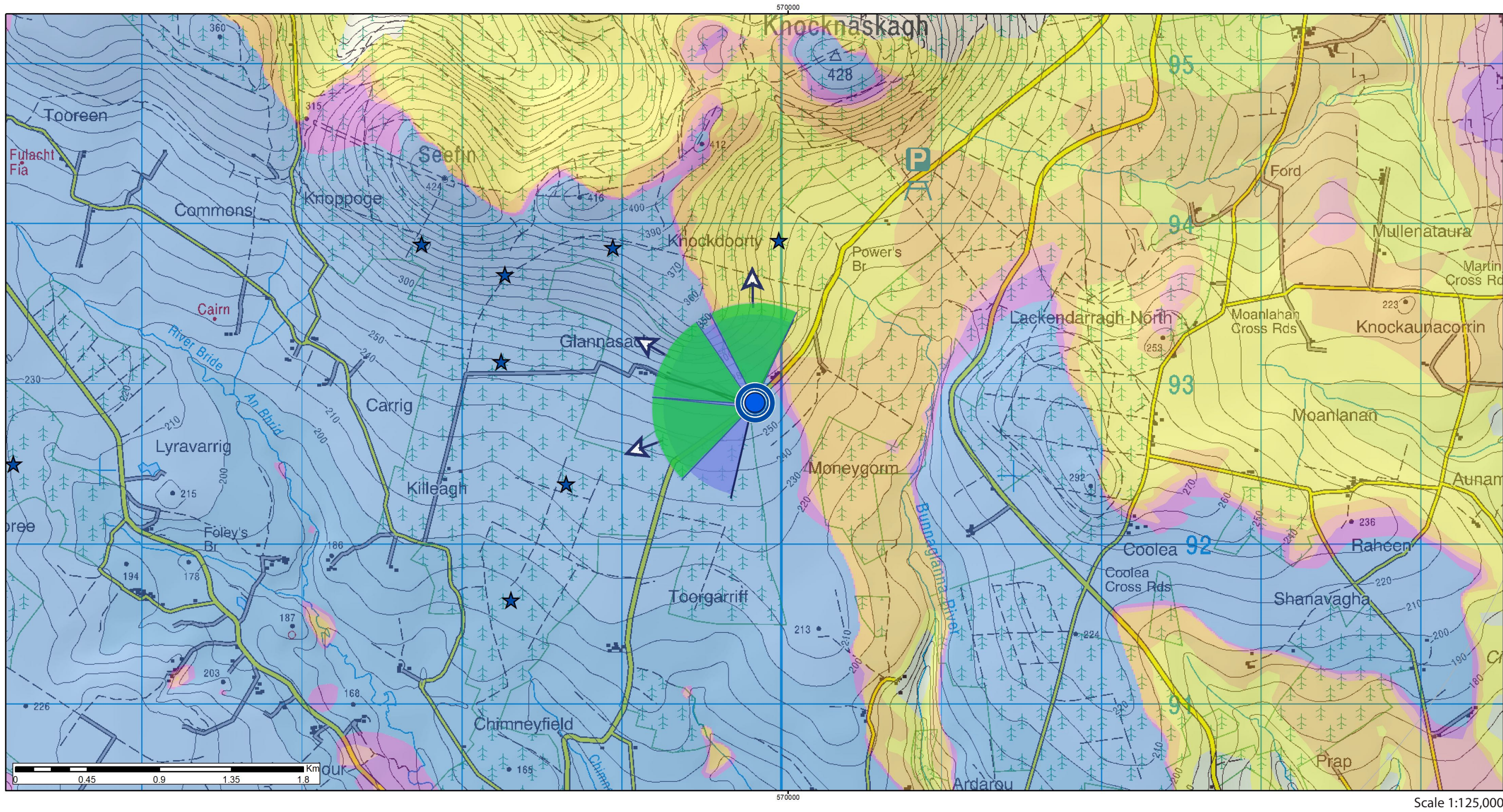
Montage View



This is a planar panorama captured, prepared and presented in accordance with the guidance set out in the Scottish Natural Heritage 2017 guidance 'Visual Representation of Wind Farms'. To view this image correctly, place on a flat surface and view from a comfortable arms length (approx 50cm).



Coom Green Energy Park - Landscape and Visual Impact Assessment



Positional Information

National Grid Cordinate (ITM)  
Easting: 569791  
Northing: 592940  
Elevation: 262.3 m

Photo Capture Information

Date: 13/07/2021  
Time: 13:08  
Camera: Canon 5D Mark II  
Lens / Focal Length: Fixed 50mm  
Camera Height: 1.7m (AGL)

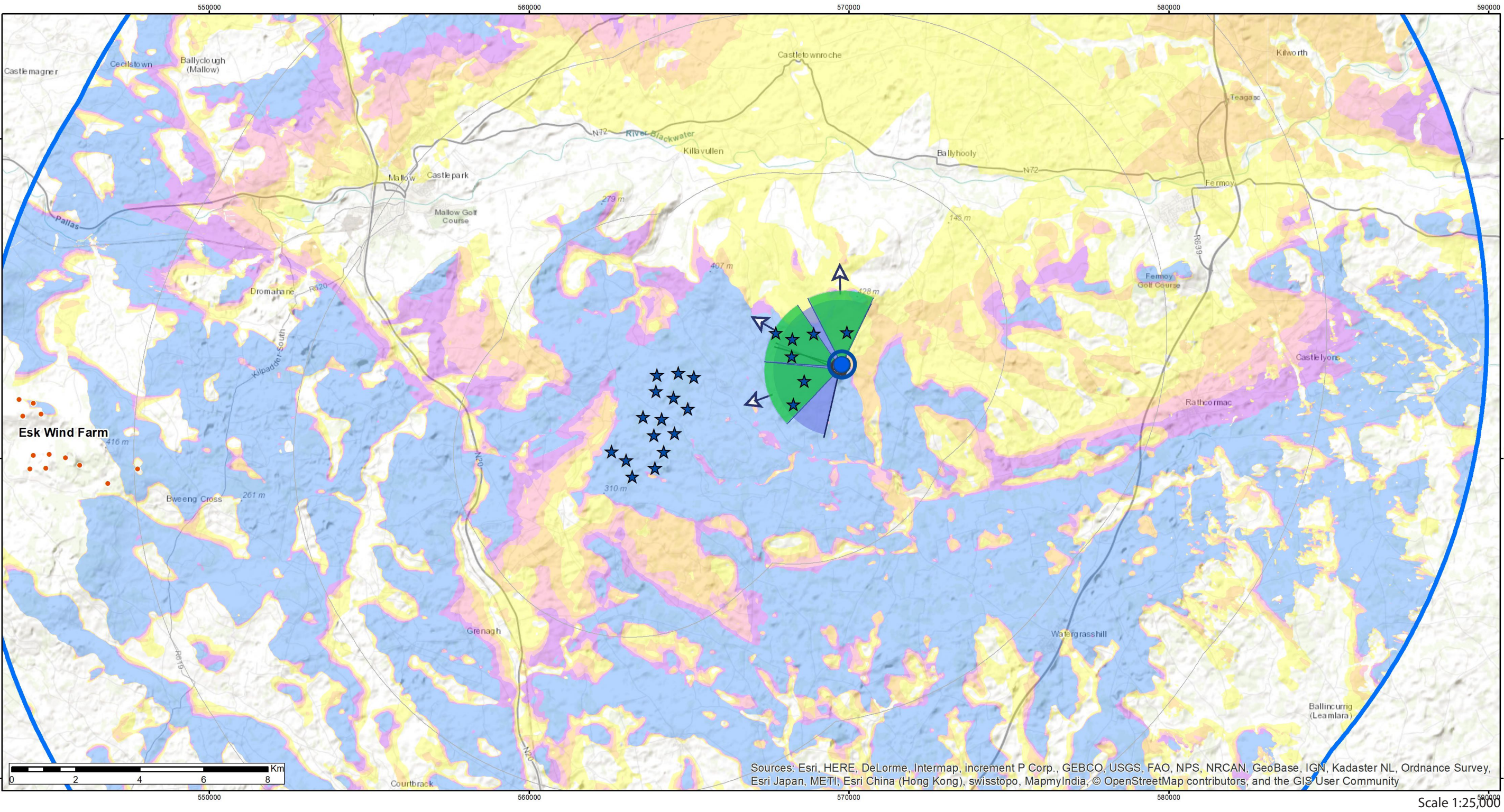
Turbine Information

Turbine Dimensions  
Nacelle Height: 100.0 m  
Rotor Diamater: 138.0 m  
Tip Height: 169.0 m

Visibility Information

Number of Nacelles Theoretically Visible: 22  
Number of Nacelles Actually Visible: 10  
Angle of View Theoretically Occupied by Turbines: 98°  
Angle of View Actually Occupied by Turbines: 67°  
Distance to Nearest Turbine: 1km km  
Distance to Nearest Visible Turbine: 1km km

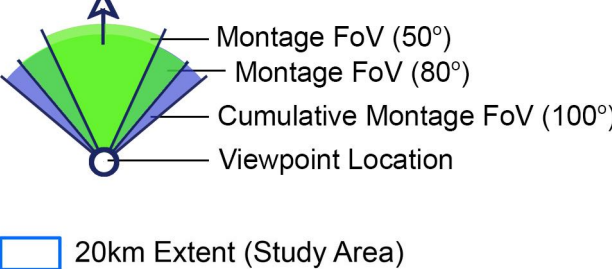
Local road at Moneygorm



ZTV Parameters

Turbine Blade Tip Height: 169.0 m  
Observer Height - Eye Level: 1.7 m  
Height Data Source: OSI 10m DTM  
Height Data Resolution: 10m  
DTM Height data does not account for non-landform features such as vegetation and buildings

★ Proposed Turbine Locations



Theoretical Turbine Visibility

★ Proposed Coom Turbines  
No. Turbines Visible  
1 - 5  
6 - 9  
10 - 13  
14 - 17  
18 - 22  
Cumulative Windfarm Status  
Eske Wind Farm (Existing)

Viewpoint Ref: RFI VP3alt

Pages to Follow for this Viewpoint

Existing & Montage Views: 3 of each  
Landscape Context Views: 2



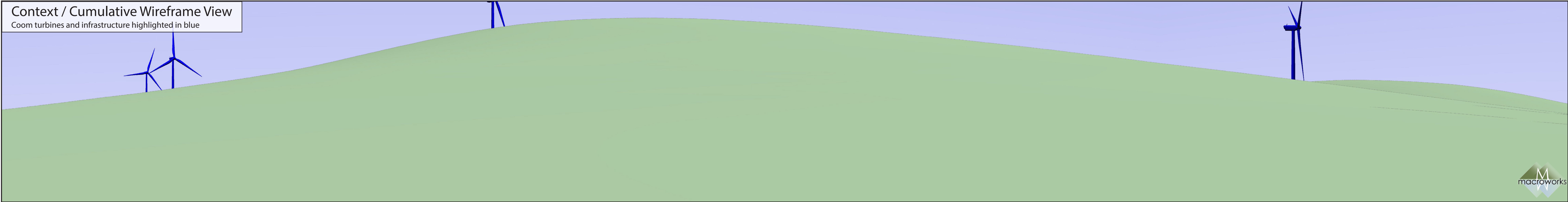




This is a cylindrical panorama captured, prepared and presented in accordance with the guidance set out in the Scottish Natural Heritage 2017 guidance 'Visual Representation of Wind Farms'.  
To view this image correctly, place on a flat surface and move along its length whilst viewing from a perpendicular viewing distance of 35cm.







This is a cylindrical panorama captured, prepared and presented in accordance with the guidance set out in the Scottish Natural Heritage 2017 guidance 'Visual Representation of Wind Farms'. To view this image correctly, place on a flat surface and move along its length whilst viewing from a perpendicular viewing distance of 35cm.



Existing View



This is a planar panorama captured, prepared and presented in accordance with the guidance set out in the Scottish Natural Heritage 2017 guidance 'Visual Representation of Wind Farms'. To view this image correctly, place on a flat surface and view from a comfortable arms length (approx 50cm).



Montage View



This is a planar panorama captured, prepared and presented in accordance with the guidance set out in the Scottish Natural Heritage 2017 guidance 'Visual Representation of Wind Farms'. To view this image correctly, place on a flat surface and view from a comfortable arms length (approx 50cm).



Existing View



This is a planar panorama captured, prepared and presented in accordance with the guidance set out in the Scottish Natural Heritage 2017 guidance 'Visual Representation of Wind Farms'. To view this image correctly, place on a flat surface and view from a comfortable arms length (approx 50cm).





Montage View



This is a planar panorama captured, prepared and presented in accordance with the guidance set out in the Scottish Natural Heritage 2017 guidance 'Visual Representation of Wind Farms'.  
To view this image correctly, place on a flat surface and view from a comfortable arms length (approx 50cm).





Existing View



This is a planar panorama captured, prepared and presented in accordance with the guidance set out in the Scottish Natural Heritage 2017 guidance 'Visual Representation of Wind Farms'. To view this image correctly, place on a flat surface and view from a comfortable arms length (approx 50cm).





Montage View



This is a planar panorama captured, prepared and presented in accordance with the guidance set out in the Scottish Natural Heritage 2017 guidance 'Visual Representation of Wind Farms'. To view this image correctly, place on a flat surface and view from a comfortable arms length (approx 50cm).

