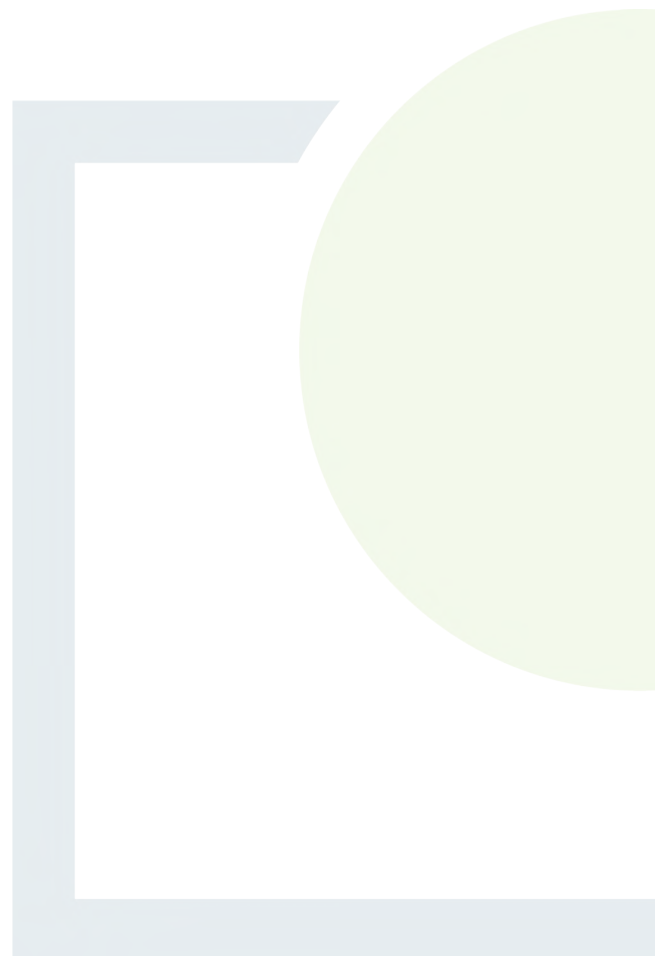




CONSULTANTS IN ENGINEERING,  
ENVIRONMENTAL SCIENCE  
& PLANNING

## APPENDIX 8

Site Entrance Sightline Field  
Survey Sheets





## Design of Vehicular Access to National Roads - Survey Sheet

**1**

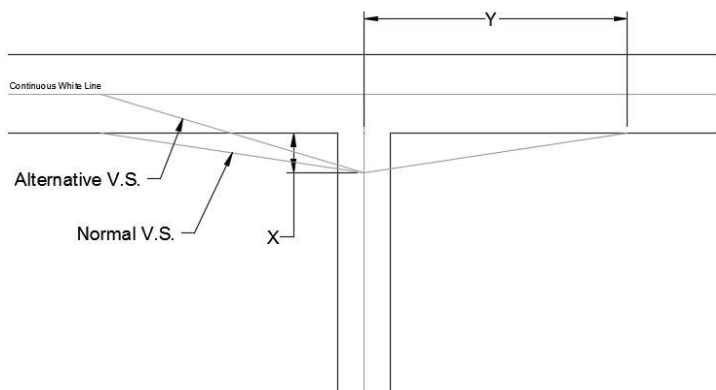
**Date:** 09/12/2021

**Project:** P21-288 Coom WF RFI

**By:** Leigh Doyle, Eoghan O'Sullivan

**From DN-GEO-03060**

Speed Limit of Major Road	Design Speed	Y Distance
-	50	70
50	60	90
60	70	120
80	85	160
100	100	215
120	120	295



Major road width (m)  
7m

Major road speed limit (kph)  
80

Minor access location	<b>X</b>	<b>Y</b>
	52.041198	-8.55794

Major road designation L6869

Major road description  
Wide carriageway with minor faded road markings. Road surface is in good condition.  
2.3m yellow hatching at entrance bellmouth.

At X = 0

	<b>Right</b>	<b>Left</b>
Y (m)	160	160

At X = 3

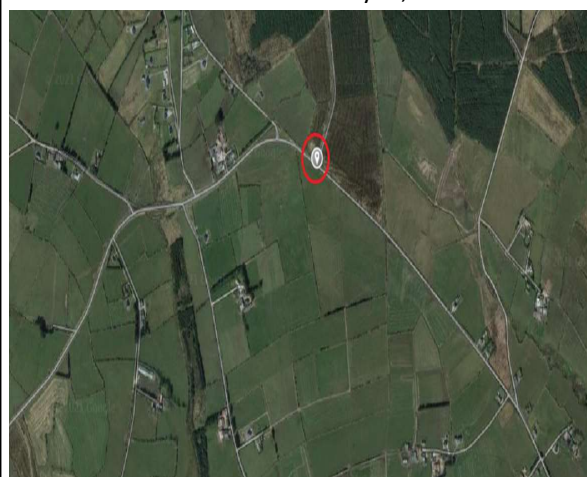
	<b>Right</b>	<b>Left</b>
Y (m)	160	90

At X = 4.5

	<b>Right</b>	<b>Left</b>
Y (m)	160	70

### Sketch/Notes

Location surveyed;



### Additional Comments

View to the left limited due to road signage and hedgerow overgrowth.  
Remove signs if possible. Trim hedgerows periodically to maintain sightlines.

### Access Point 1

## Design of Vehicular Access to National Roads - Survey Sheet

**2B**

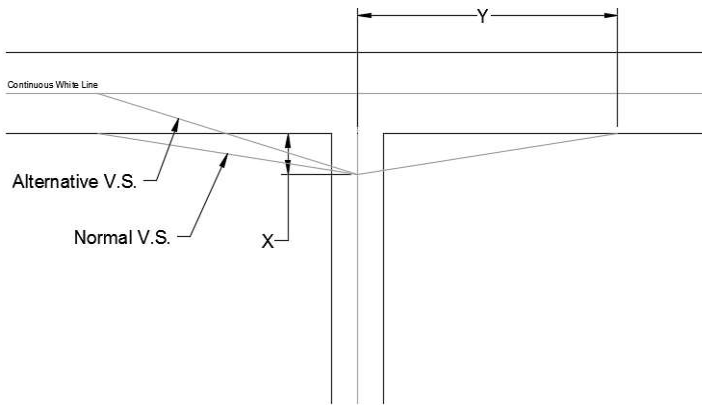
**Date:** 09/12/2021

**Project:** P21-288 Coom WF RFI

**By:** Leigh Doyle, Eoghan O'Sullivan

*From DN-GEO-03060*

Speed Limit of Major Road	Design Speed	Y Distance
-	50	70
50	60	90
60	70	120
80	85	160
100	100	215
120	120	295



Major road width (m)

Major road speed limit (kph)

80

Minor access location

X	Y
52.048072	-8.567521

10 to 12 m north of entrance 2

Major road description

Road in good condition

Solid white centre present, no edge markings.

Hedgerow to the right were recently trimmed offering good visibility

Hedgerows to the left were not trimmed and would need attention.

At X = 0

	Right	Left
Y (m)	160	160

At X = 3

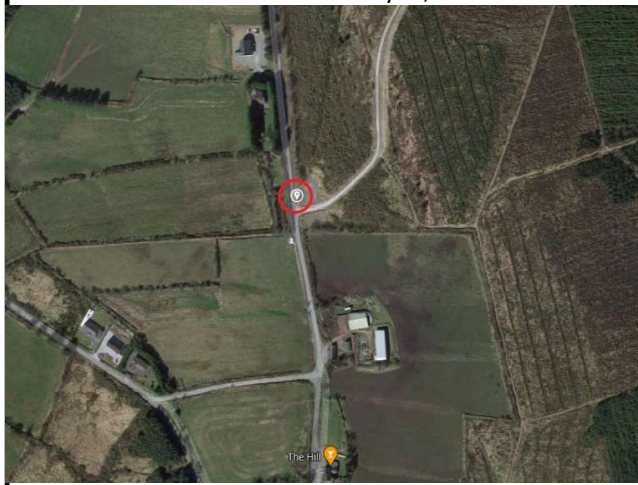
	Right	Left
Y (m)	160	103

At X = 4.5

	Right	Left
Y (m)	130	90

**Sketch/Notes**

Location surveyed;



**Additional Comments**

Hedgerow to be reduced to 1m above ground level.

Vegetation removed and trees trimmed periodically.

**Access Point 2B**

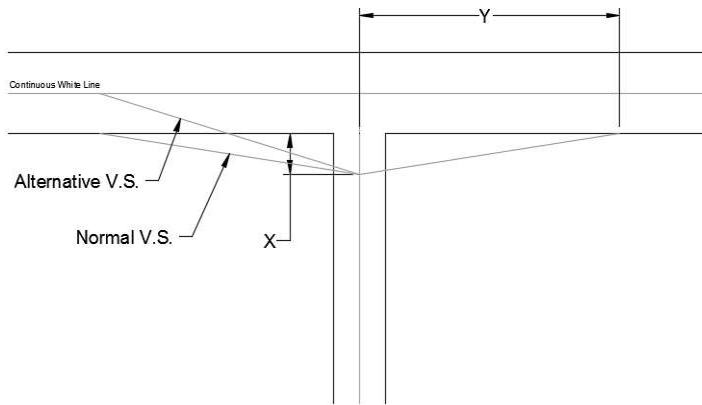
## Design of Vehicular Access to National Roads - Survey Sheet

**3**

**Date:** 09/12/2021  
**Project:** P21-288 Coom WF RFI  
**By:** Leigh Doyle, Eoghan O'Sullivan

**From DN-GEO-03060**

Speed Limit of Major Road	Design Speed	Y Distance
-	50	70
50	60	90
60	70	120
80	85	160
100	100	215
120	120	295



Major road width (m)

Major road speed limit (kph)  
80

Minor access location

X
52.100067

Y
-8.426711

Major road designation

Park Avenue N
---------------

Major road description

Narrow road. Road surface in fair condition. Potholing and rutting present. No road markings.

At X = 0

	Right	Left
Y (m)	160	160

At X = 3

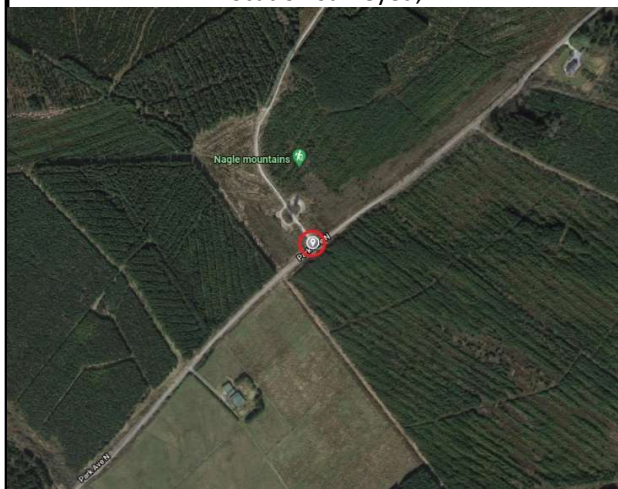
	Right	Left
Y (m)	160	160

At X = 4.5

	Right	Left
Y (m)	90	160

### Sketch/Notes

Location surveyed;



### Additional Comments

Good sightlines achievable with minor accomodation works immediately left to remove vegetation obstructing view.

### Alternative Access Point 3

## Design of Vehicular Access to National Roads - Survey Sheet

**4**

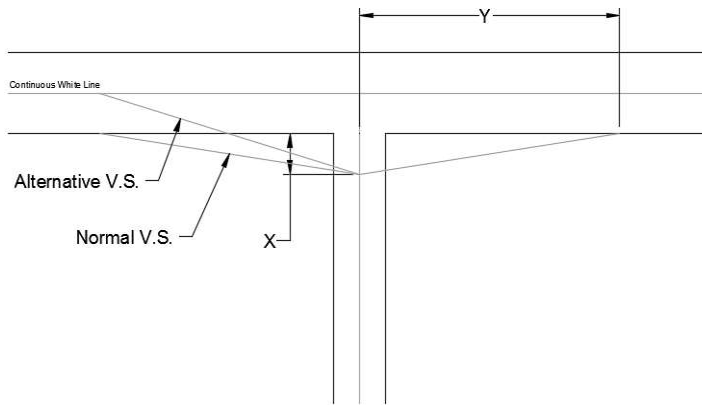
**Date:** 09/12/2021

**Project:** P21-288 Coom WF RFI

**By:** Leigh Doyle, Eoghan O'Sullivan

*From DN-GEO-03060*

Speed Limit of Major Road	Design Speed
-	50
50	60
60	70
80	85
100	100
120	120



Major road width (m)

Major road speed limit  
80

Minor access location	<b>X</b>	<b>Y</b>
	52.099554	-8.427461

Major road designation Park Avenue N

Major road description Narrow road. Road surface in fair condition. Potholing and rutting present. No road markings.

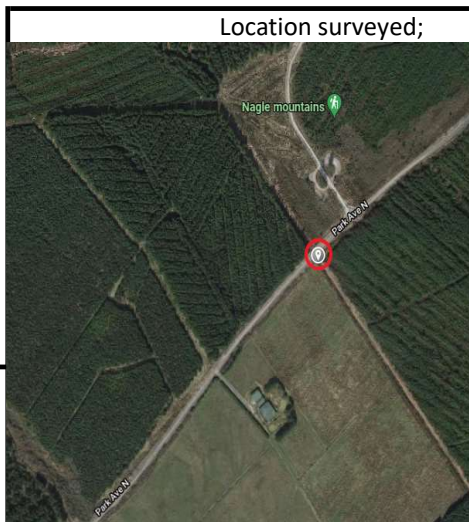
At X =	<u>0</u>	
	<b>Right</b>	<b>Left</b>
Y (m)	90	90

At X =	<u>3</u>	
	<b>Right</b>	<b>Left</b>
Y (m)	(75) 90	(60) 90

At X =	<u>4.5</u>	
	<b>Right</b>	<b>Left</b>
Y (m)	(50) 90	(40) 90

Measurements in brackets above indicate measurement recorded on site with existing overgrown hedgerow and vegetation limiting visibility. Measurement above after brackets is what can be achieved with accommodation works.

### Sketch/Notes



### Additional Comments

Severe water ponding noted at the entrance location.

3m and 4.5m set back distance 'X' from road edge is approximately 0.5m lower than road level.

### Alternative Access Point 3B

