



CONSULTANTS IN ENGINEERING,
ENVIRONMENTAL SCIENCE & PLANNING

APPENDIX 14.1

Figures

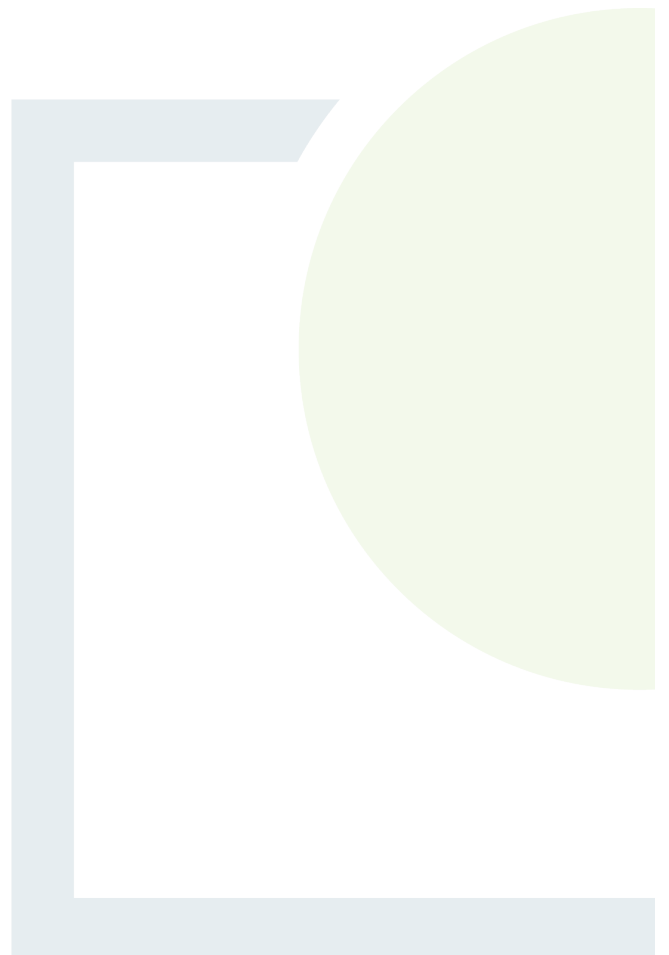




Figure 14-1: Down Survey map with general area circled

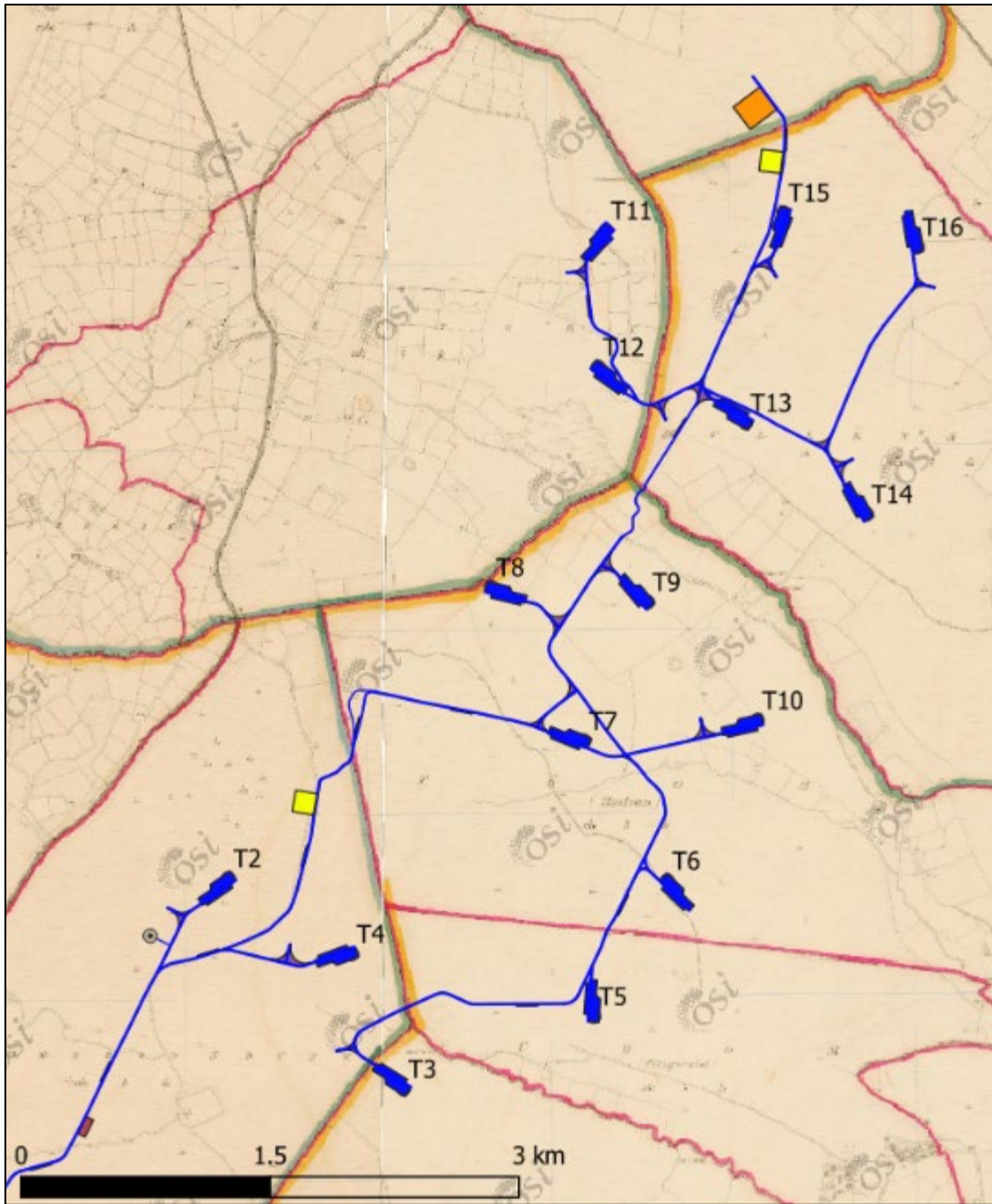


Figure 14-2: 1st edition 6-inch map showing locations of Turbines 2-16

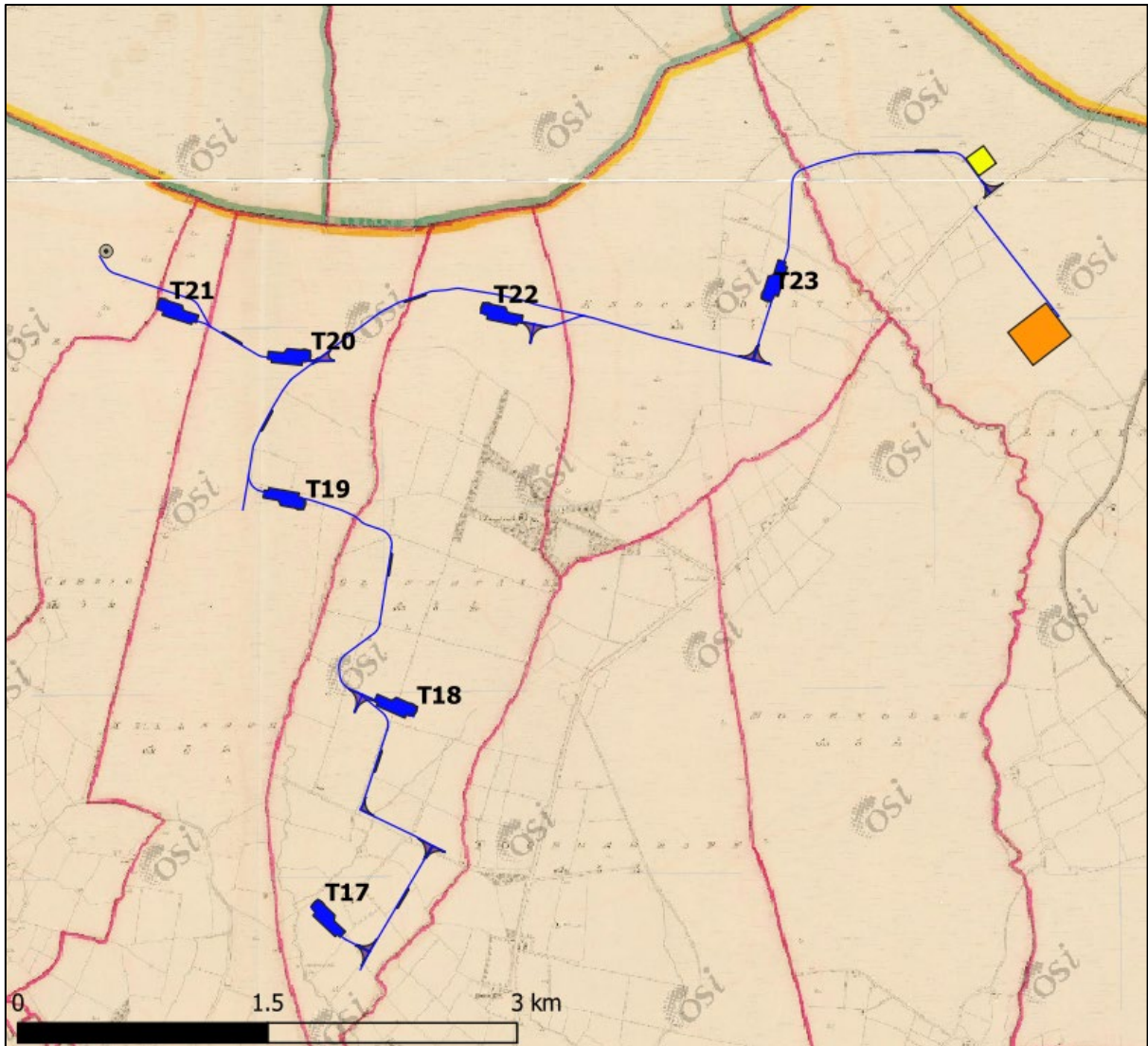


Figure 14-3: 1st edition 6-inch map showing locations of Turbines 17 to 23

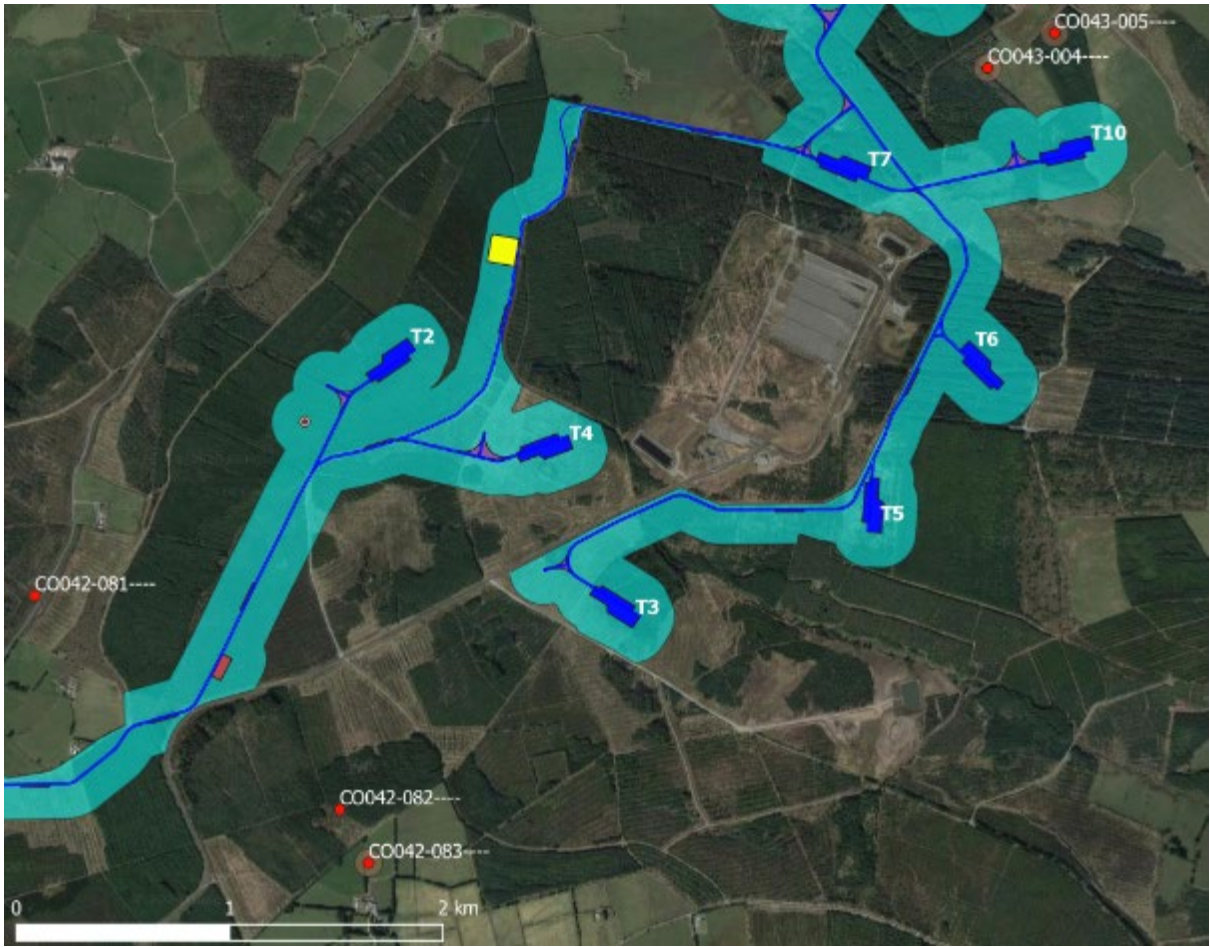


Figure 14-4: Southern end of energy park and recorded archaeological sites

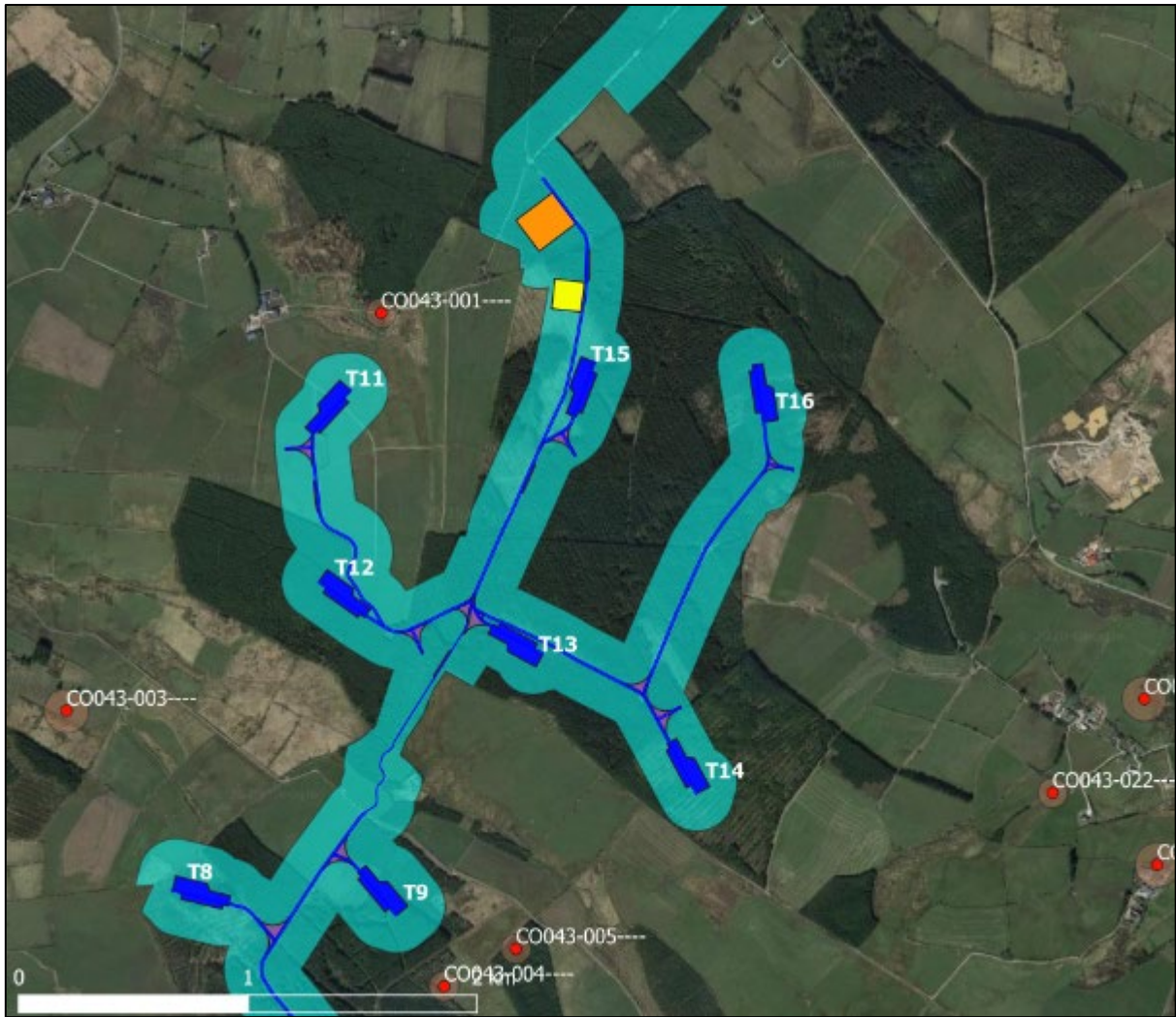


Figure 14-5: Central area of energy park and recorded archaeological sites

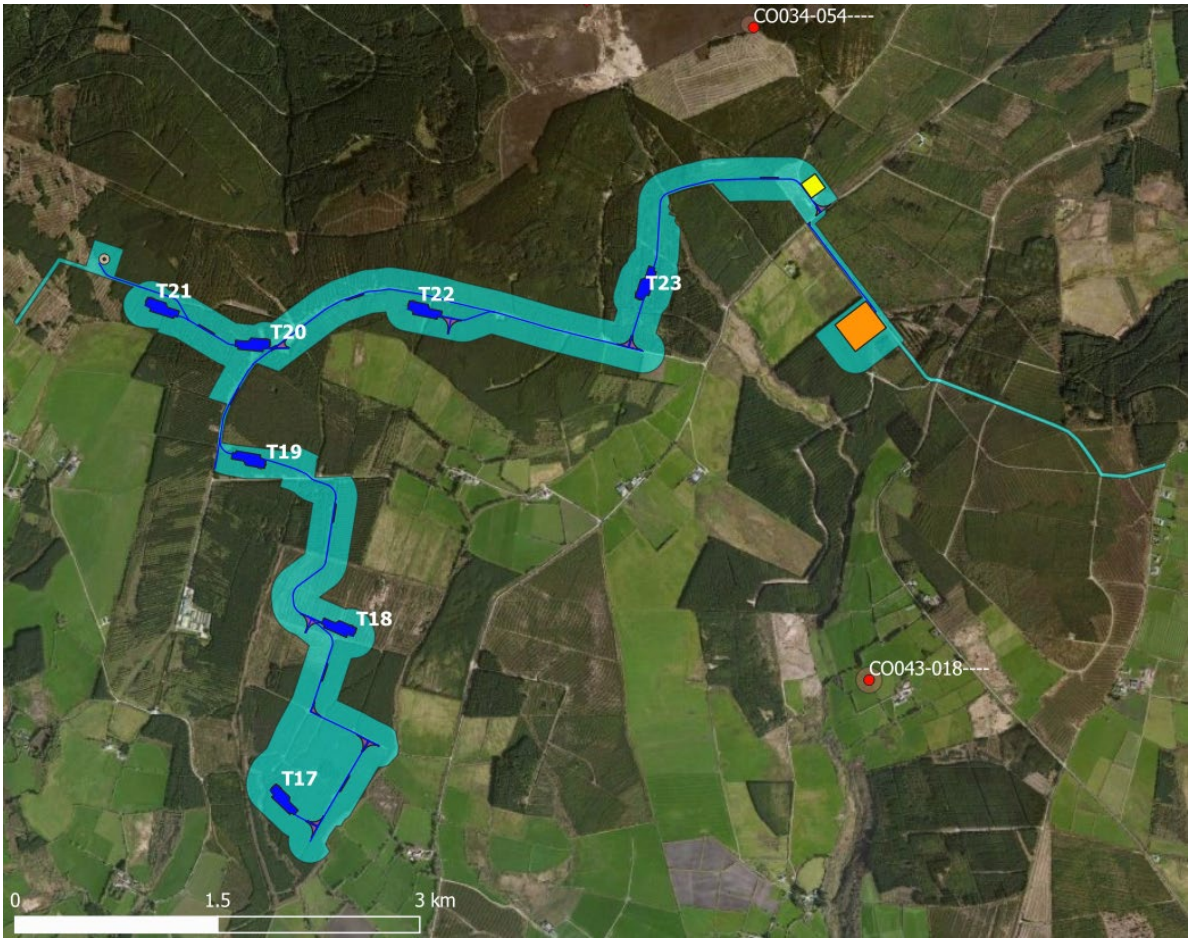


Figure 14-6: North area of energy park and recorded archaeological sites

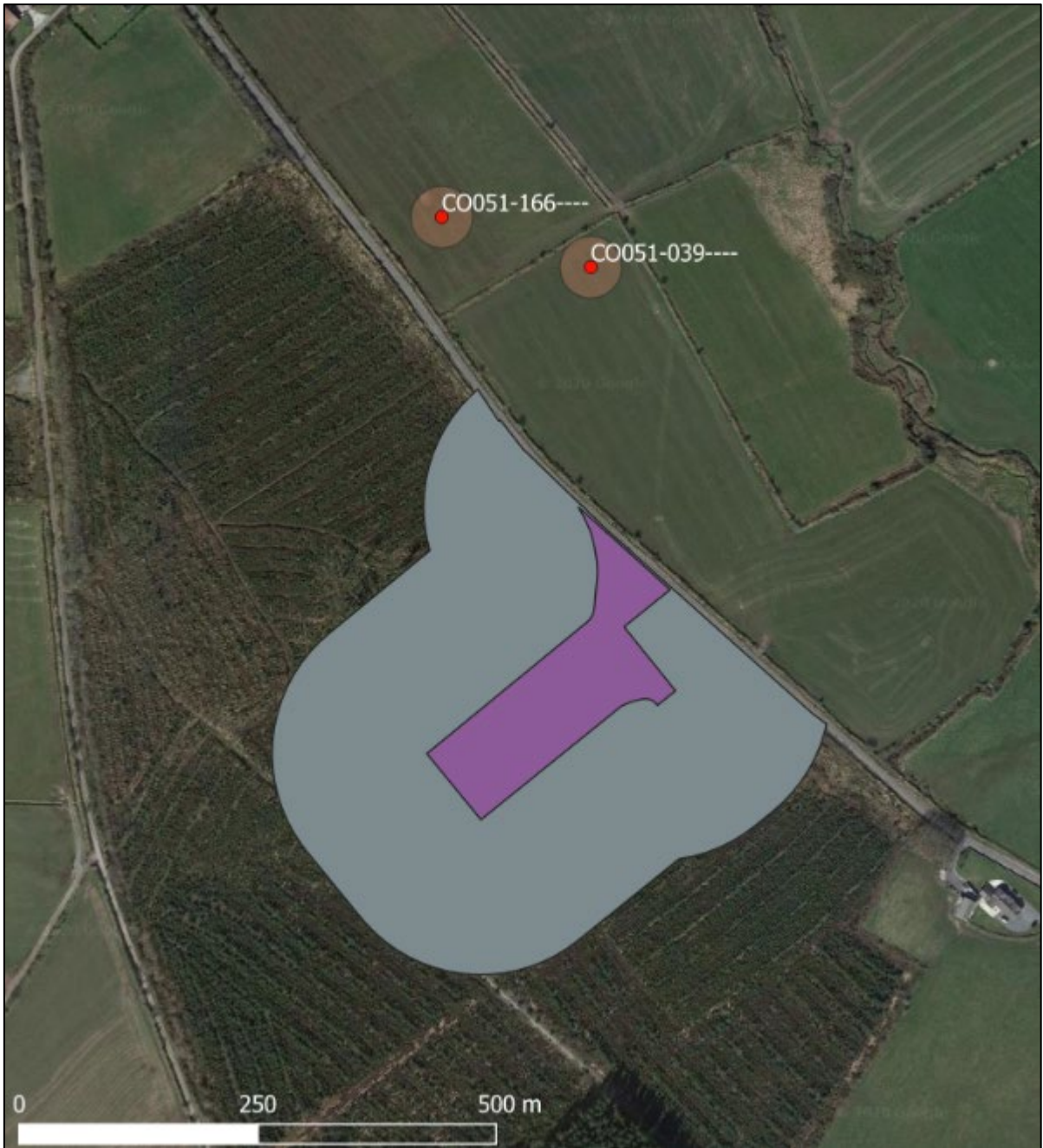


Figure 14-7: Turning-head to south of energy park and recorded archaeological sites

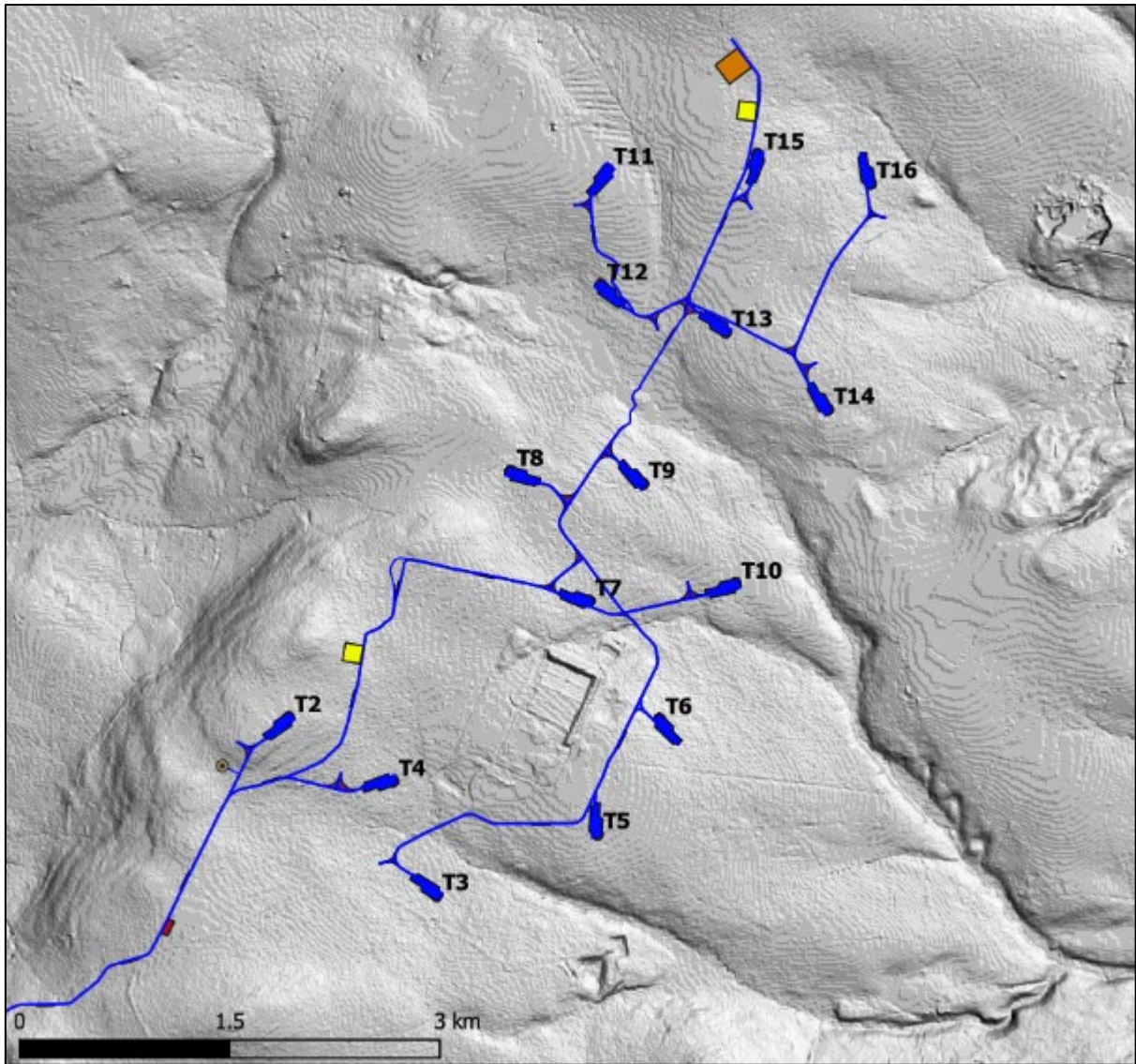


Figure 14-8: LiDAR imagery of south end of energy park

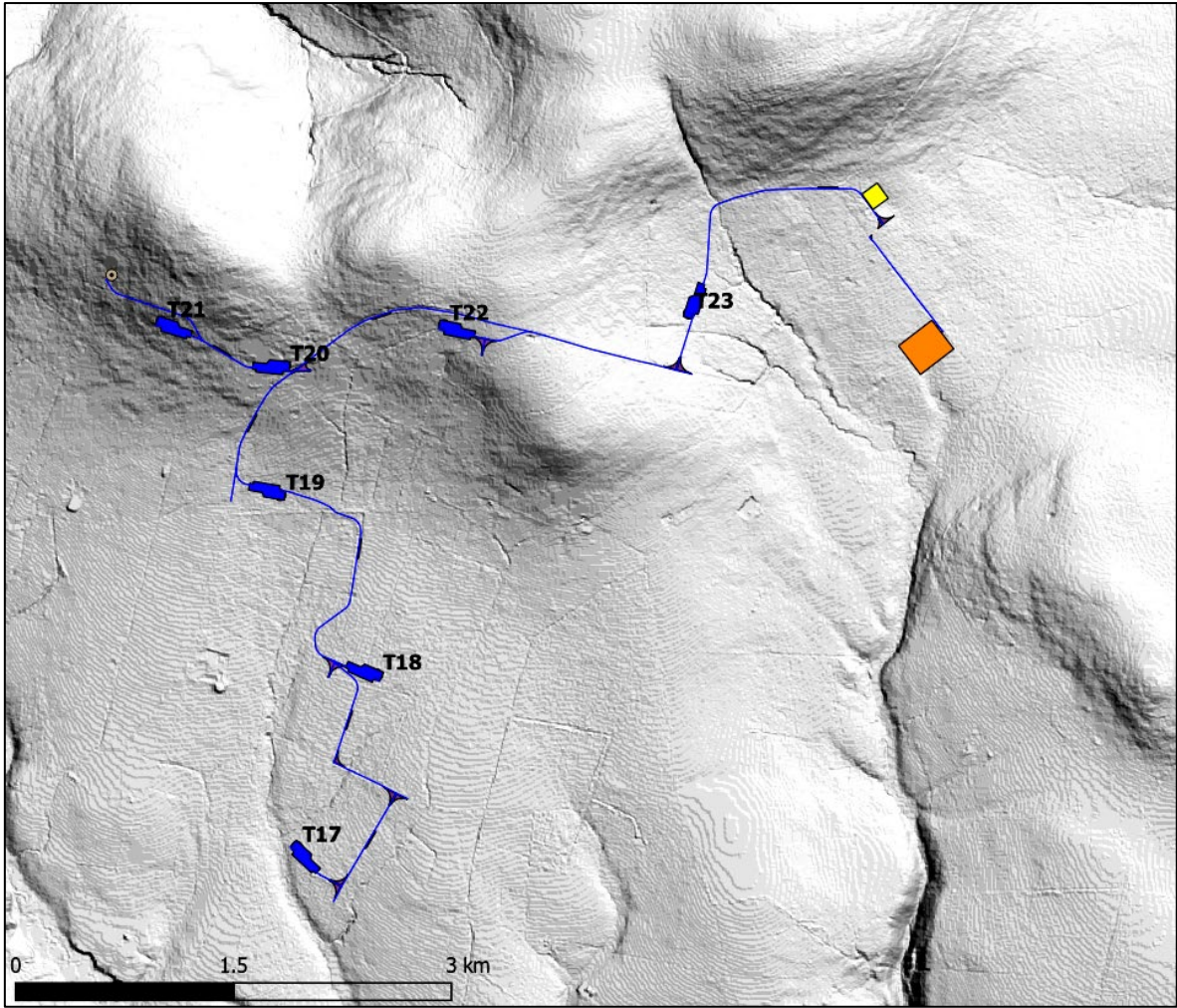


Figure 14-9: LiDAR imagery of north end of energy park

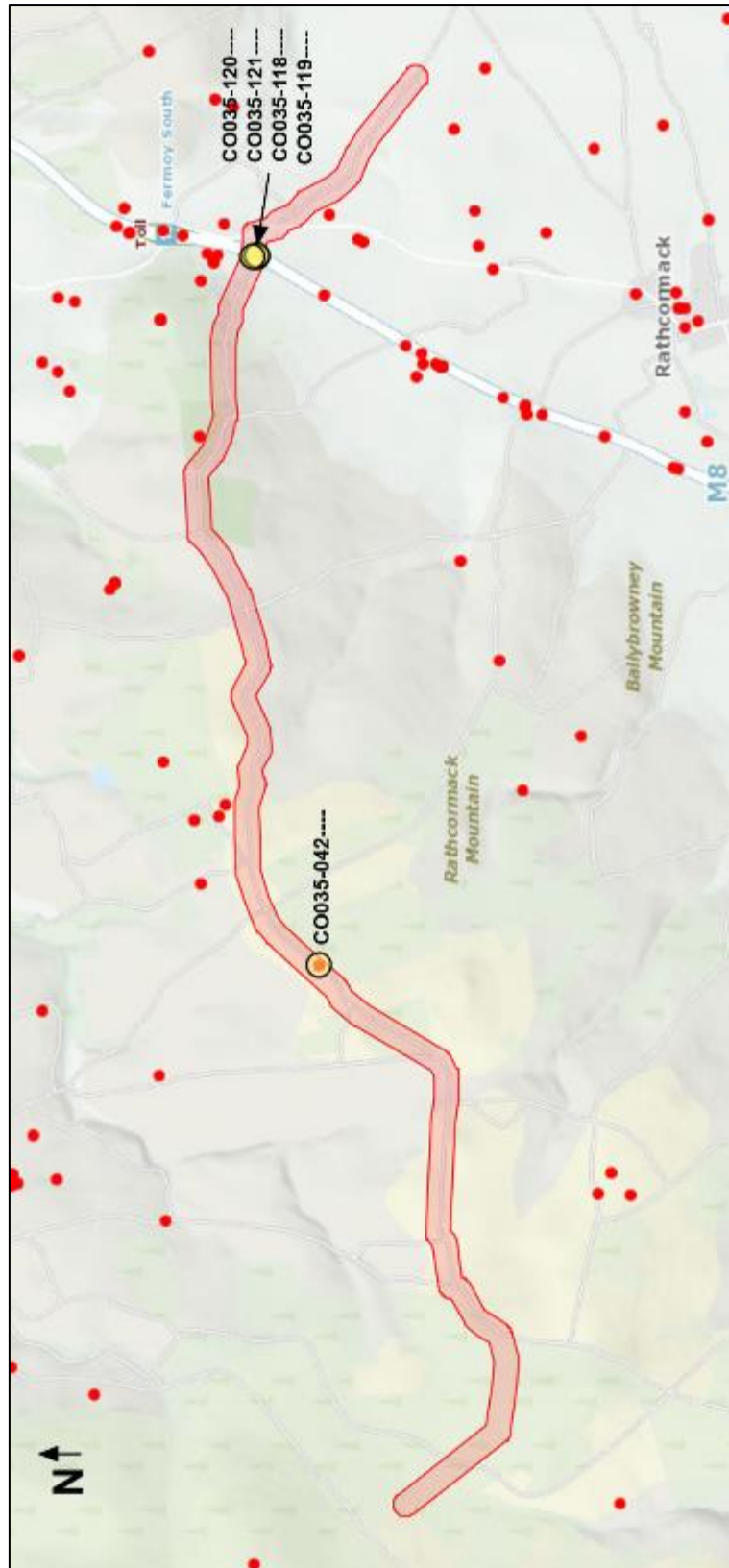


Figure 14-10: Grid route connection 100m study area (shaded) and recorded archaeological sites

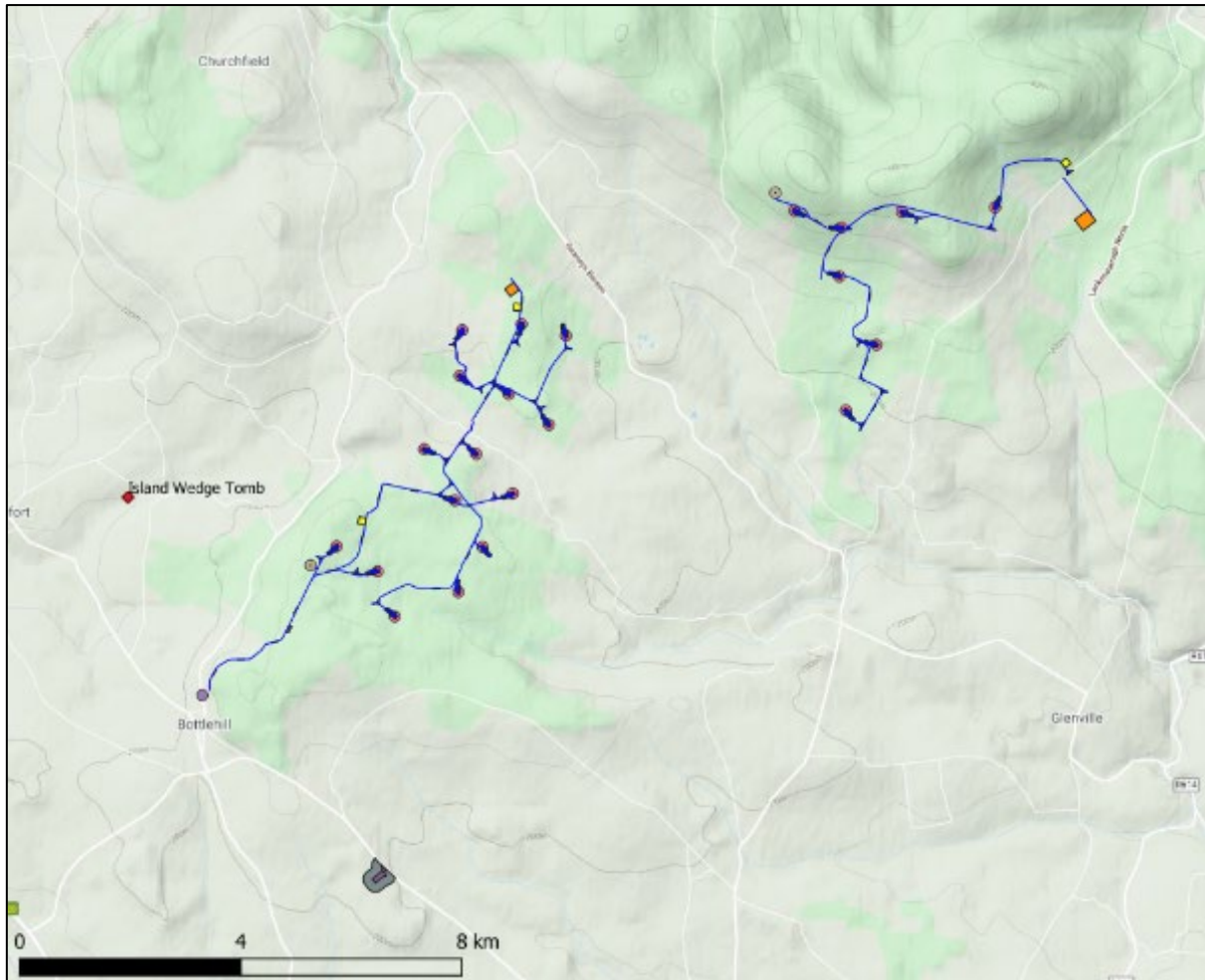


Figure 14-11: Location of Island Wedge Tomb



CONSULTANTS IN ENGINEERING,
ENVIRONMENTAL SCIENCE & PLANNING

APPENDIX 2

Photographic Record

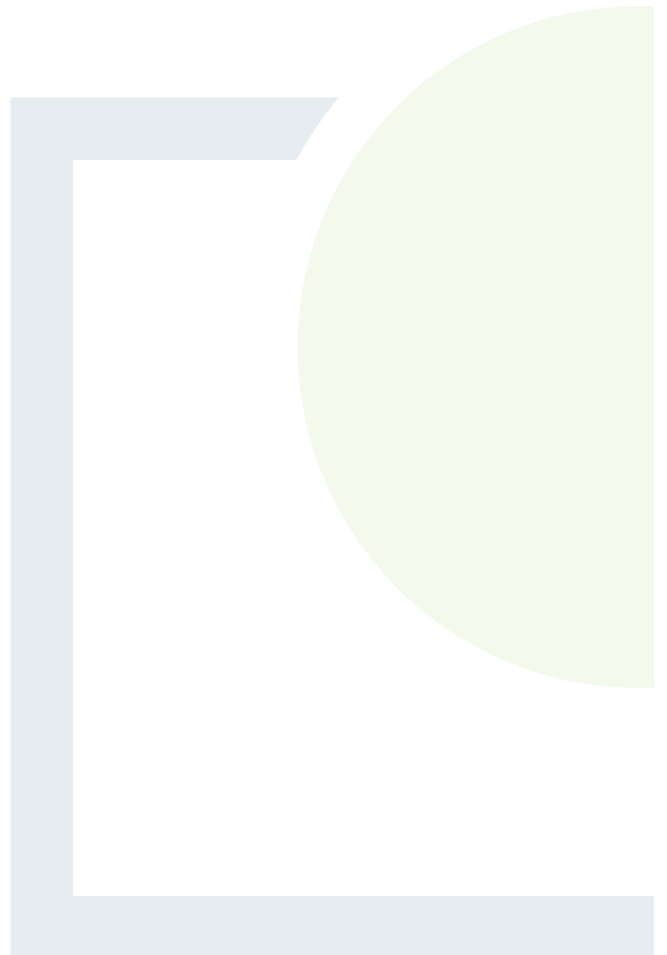




Plate 14-1: View of forestry in environs of Turbine 2



Plate 14-2: View of existing track and forestry at Turbine 3 location



Plate 14-3: View towards forestry in environs of Turbine 4



Plate 14-4: View of forestry in environs of Turbine 5



Plate 14-5: View towards forestry in environs of Turbine 6



Plate 14-6: View of existing track and forestry in environs of Turbine 7



Plate 14-7: View towards forestry at location of Turbine 8



Plate 14-8: View of existing forestry and pasture in environs of Turbine 9



Plate 14-9: View towards access route and location of Turbine 10



Plate 14-10: View of proposed access route to location of Turbine 11



Plate 14-11: View of former farmyard on east side of access track to Turbine 11



Plate 14-12: View of location of Turbine 11 (recorded location of Barrow CO043-001---- is within forestry in background)



Plate 14-13: View of forestry at location of Turbine 12



Plate 14-14: View of forestry at location of Knockacullta substation



Plate 14-15: View of felled forestry at location of Turbine 13



Plate 14-16: View of forestry in environs of Turbine 14



Plate 14-17: View towards forestry at location of Turbine 15



Plate 14-18: View towards forestry in environs of Turbine 16



Plate 14-19: View of forestry in environs of Turbine 17



Plate 14-20: View of forestry in environs of Turbine 18



Plate 14-21: View of forestry in environs of Turbine 19



Plate 14-22: View of location of Turbine 20 with existing forest road to right



Plate 14-23: View of forestry in environs of Turbine 21



Plate 14-24: View of forestry at location of Turbine 22



Plate 14-25: View of forestry in vicinity of Turbine 23



Plate 14-26: View of access track to location of Lackendarragh North substation (in wooded area on right side of photo)



FEHILY TIMONEY

— 30 YEARS —

CONSULTANTS IN ENGINEERING,
ENVIRONMENTAL SCIENCE & PLANNING

www.fehilytimoney.ie

CORK OFFICE

Core House
Pouladuff Road,
Cork, T12 D773,
Ireland
+353 21 496 4133

Dublin Office

J5 Plaza,
North Park Business Park,
North Road, Dublin 11, D11 PXT0,
Ireland
+353 1 658 3500

Carlow Office

Unit 6, Bagenalstown Industrial
Park, Royal Oak Road,
Muine Bheag,
Co. Carlow, R21 XA00,
Ireland
+353 59 972 3800

