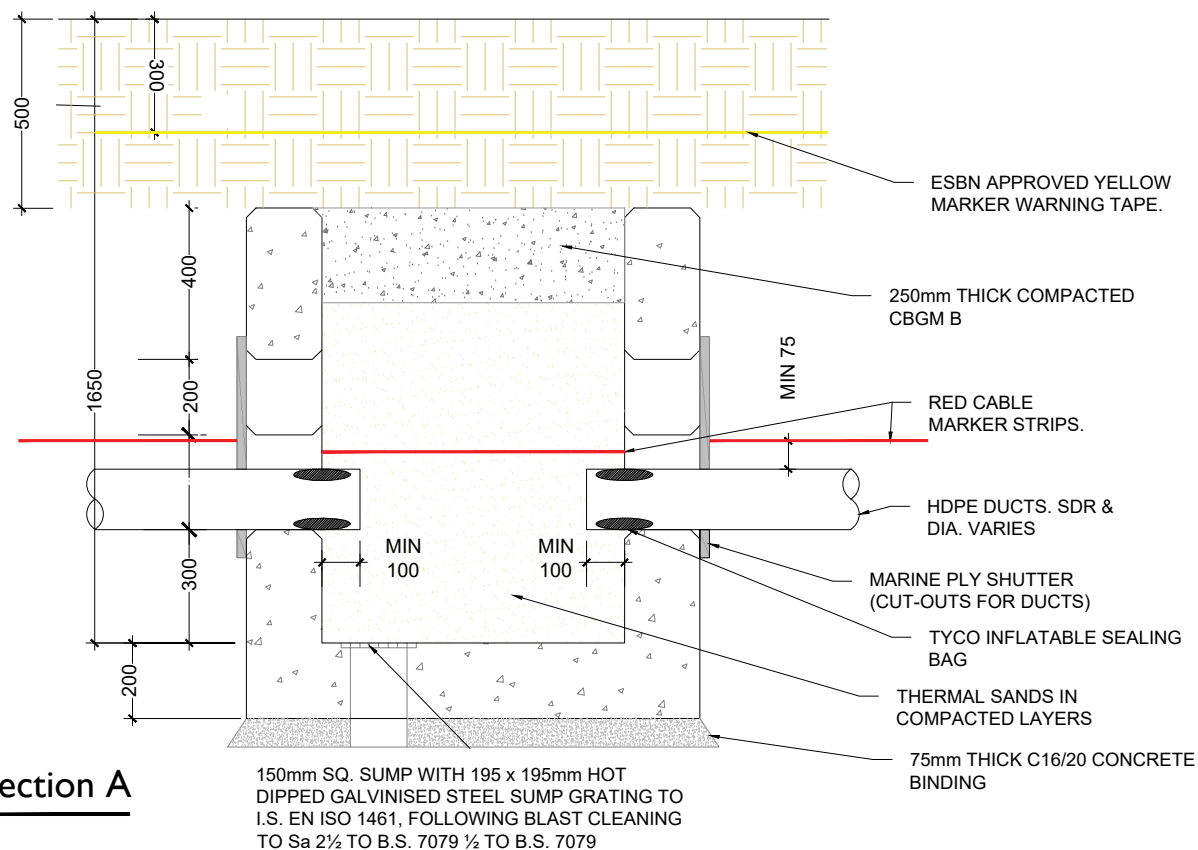


**Typical Plan of Transition Chamber**  
SCALE 1:20

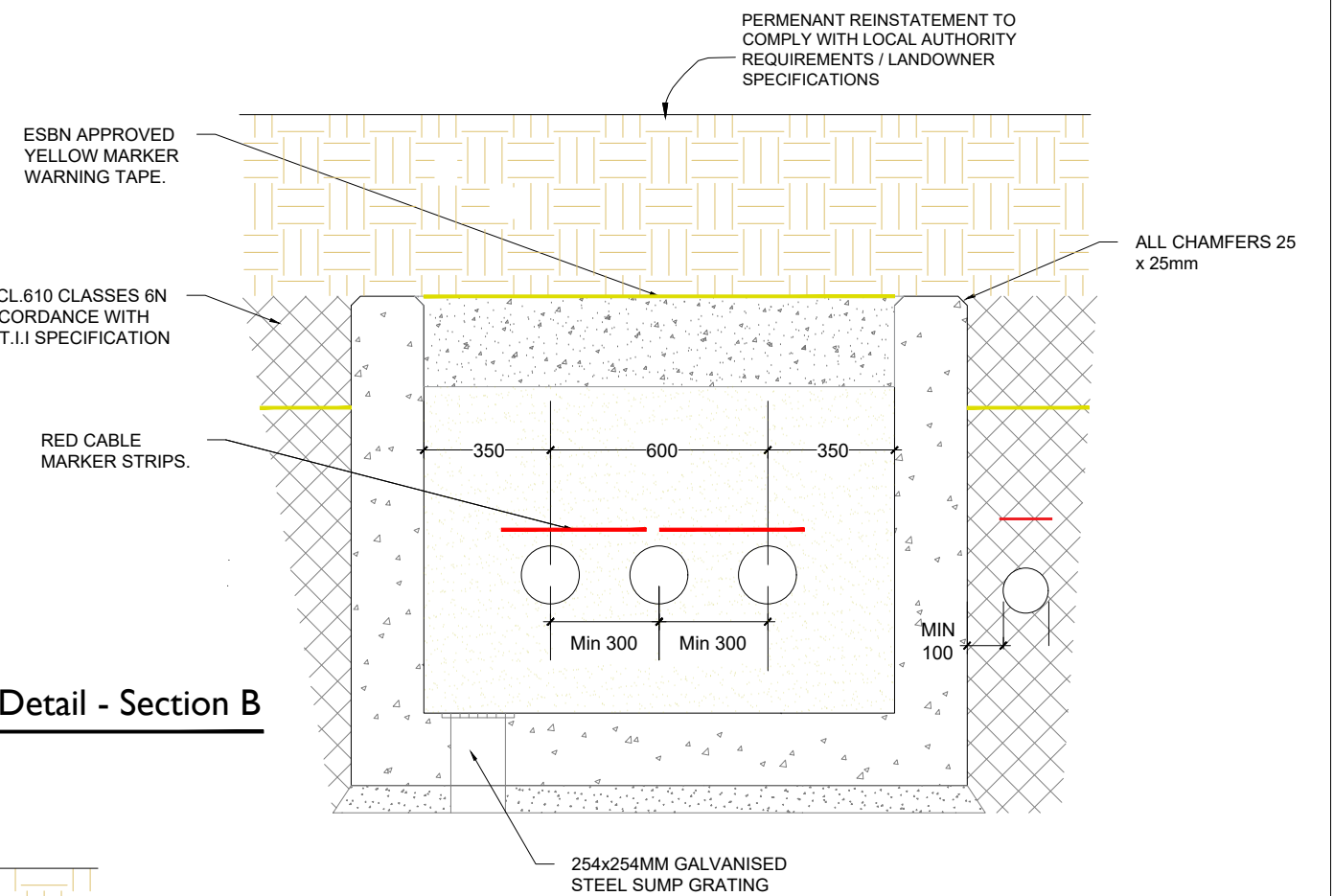
NOTES:

1. ALL DIMENSION IN MILLIMETERS UNLESS OTHERWISE STATED,
2. TELCOM DUCTS NOT TO BE ROUTED THROUGH TRANSITION CHAMBER
3. IF TRANSITION CHAMBER IS USED TO INTERFACE WITH HDD SECTION, THEN THE TELECOMS DUCT SDR 17.6 SHOULD BE CHAMFERED WHEN COUPLED WITH SDR 11 DUCTS
4. REINSTATEMENTS TO COMPLY WITH REQUIREMENTS OF THE RELEVANT LOCAL AUTHORITY/ASSET OWNER
5. TEMPORARY SUPPORTS TO THE SIDES OF THE EXCAVATION MAY BE REQUIRED DEPENDENT ON THE SUBSOIL,
6. THE CONSTRUCTION SHOWN, IS APPLICABLE ONLY WHERE THE THE SUBSOIL AT FORMATION LEVEL EXCEEDS 100kN/m BEARING CAPACITY
7. ALL MATERIALS AND WORKMANSHIP TO BE IN ACCORDANCE WITH NRA/T.I.I. SPECIFICATION FOR ROADWORKS, MAY 2005 & SUBSEQUENT REVISIONS
8. THE CENTRE LINE OF THE DUCTS ENTERING THE CHAMBER SHALL BE ALIGNED WITH THE DUCTS ON THE OPPOSITE SIDE, SO THAT THE CABLE IS PULLED IN A STRAIGHT LINE
9. DUCTS SHALL APPROACH THE CHAMBER IN A STRAIGHT ALIGNMENT (HORIZONTAL OR VERTICAL) FOR A MINIMUM OF 3 METERS BEFORE THE WALL OPENING
10. CARRAIGWAY COVERS AND FRAMES TO BE TO B.S EN 124.
11. THE DEPTH FROM GROUND LEVEL TO THE TOP OF WALL CONSTRUCTION SHALL BE 500mm IN CULVATED FIELDS AND GRASSED LANDS.
12. FINAL POSITION OF TRANSITION CHAMBERS SHALL BE AGREED WITH EIRGRID

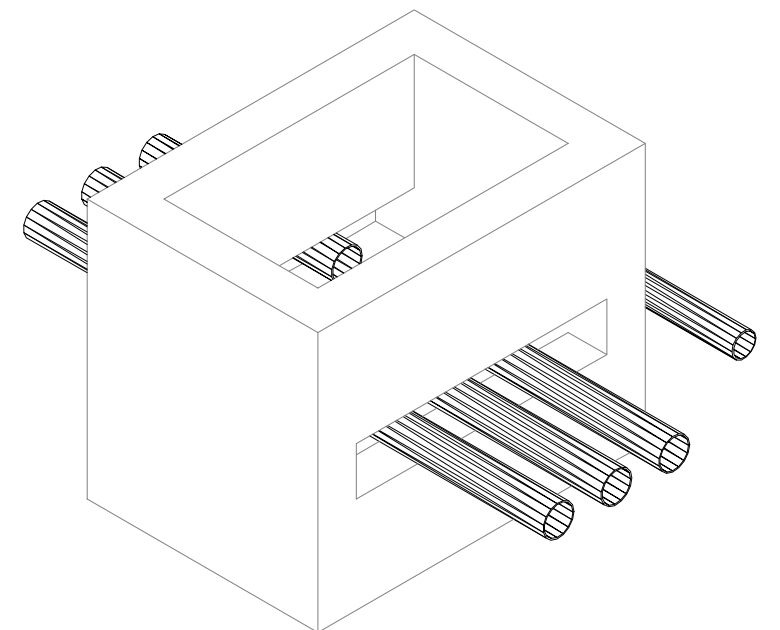
**Transition Chamber Detail - Section A**  
SCALE 1:20



**Transition Chamber Detail - Section B**  
SCALE 1:20



**Isometric : Chamber Arrangement**  
SCALE 1:20



Head Office  
Beenreigh,  
Abbeydorney,  
Tralee, Co. Kerry  
Ireland  
Tel: 00353 66 7135710

CLIENT



PROJECT

Clogherchor Wind Farm  
110kV Grid Connection

PROJECT NUMBER  
05-725

SHEET NUMBER  
05725-DR-133

SHEET TITLE

Typical Transition  
Chamber Details

DRAWING STATUS  
For Information

ISSUE/REVISION

I/R	DATE	DESCRIPTION
P01	11.01.23	Issued for Information
P00	03.10.22	Issued for Information