



Kilgarvan Wind Farm, Co Kerry

CLOGHERCOR WIND FARM

Welcome to the third newsletter from the project team for the proposed Cloghercor Wind Farm, located in the Clogherachullion and Cloghercor areas of County Donegal.

Our community engagement started in April 2021 when we issued the first newsletter for this project. Our initial proposal has been on display via an online exhibition since July 2021 on the project website, at www.cloghercorwindfarm.com.

Engagement has continued throughout this time, with our Community Liaison Officers available to answer any questions that have arisen, and an online information webinar took place in November 2021.

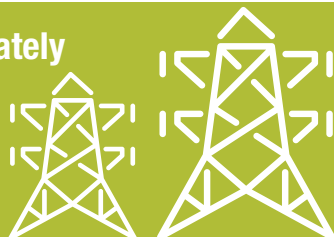
We have been carefully considering feedback from the community and evaluating the findings from ongoing environmental site studies. We are now pleased to be able to share an updated proposal for Cloghercor Wind Farm, which represents a reduction in the number of turbines and changes to their placement.



Reduced scheme
consisting of
21 turbines

Producing approximately

126 MW of
green energy



Approximately **€500,000**

in community benefit
for every year the wind
farm is in operation

VIEW OUR UPDATED PROPOSAL AND MEET THE TEAM

You can view our proposed design and layout of the wind farm on the next page. You can also view it at: www.cloghercorwindfarm.com. This website provides new maps and visualisations of the scheme, in addition to further information on the detailed studies that are underway on the site.

We also invite you to book an appointment to meet our local project team, learn more about the proposal, and to ask any questions.

Email us at info@cloghercorwindfarm.com or call Sean or John, our Community Liaison Officers, on **(021) 422 3677** to arrange a meeting on either of the following days:

Halla Naomh Bride, Madavagh, Lettermacaward
Monday 13 June, 12pm – 8pm

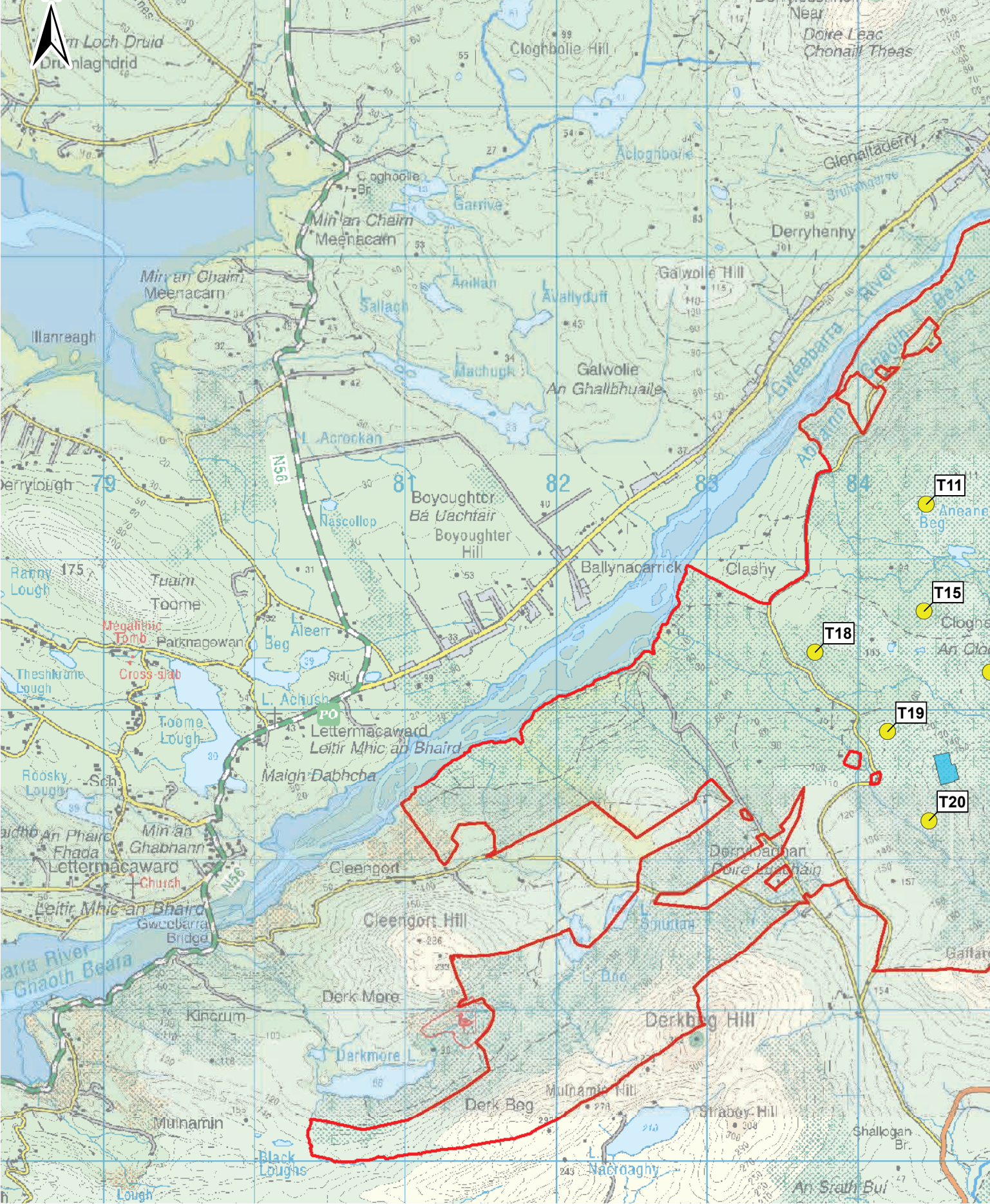
Teach Gleann Ceo, Main Street, Doochary
Tuesday 14 June, 12pm – 8pm



Sornie Wind Farm, Co Donegal

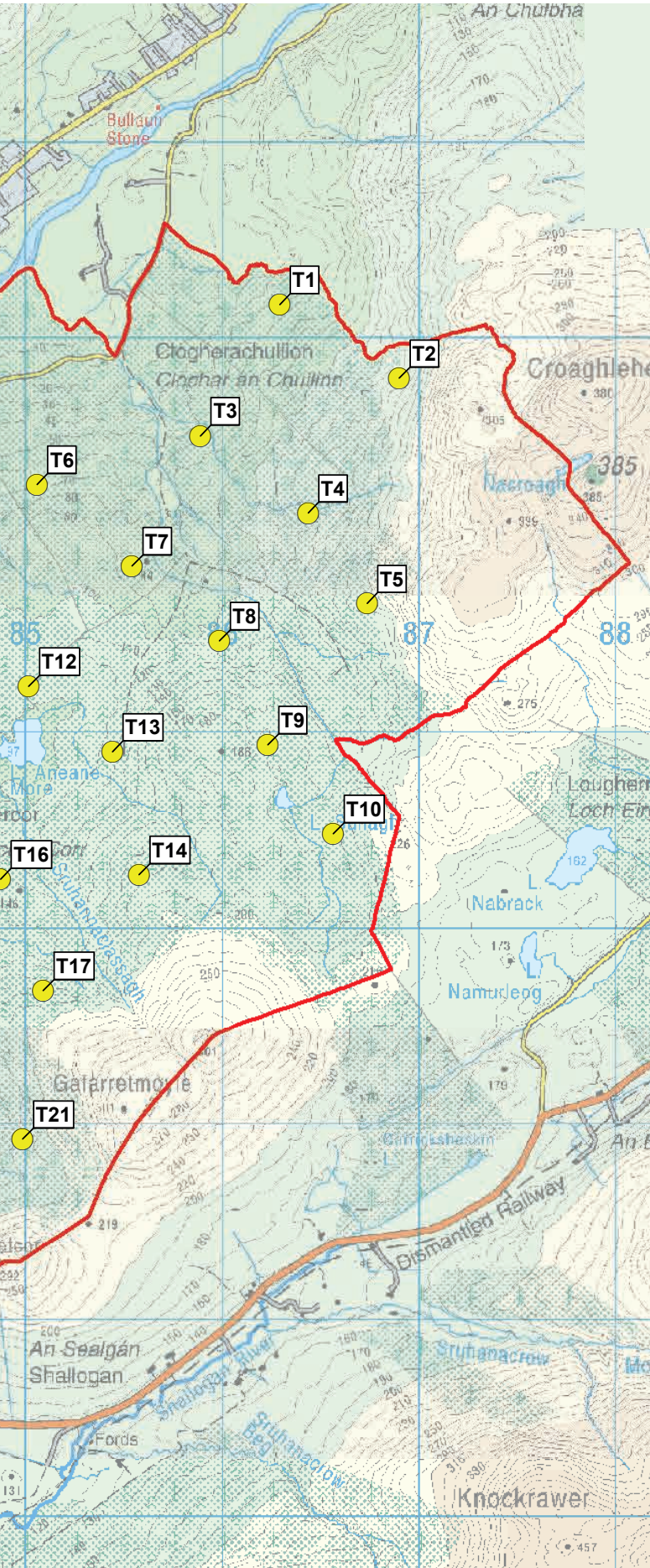
CLOGHERCOR WIND FARM

DESIGN ITERATION 2 – LOCATION & LAYOUT



PROJECT UPDATE

SINCE OUR LAST NEWSLETTER:



- We have revised the proposal for Cloghercor Wind Farm to reflect the findings of our ongoing on-site studies. Our updated proposal now encompasses a more compact development consisting of 21 turbines.

- Our numerous ecology and environmental surveys have continued on the site. These surveys include studies into aquatic, bat and ornithology (bird) activity on the site.



Ecology studies are ongoing on site

- Landscape and visual assessments have been ongoing, with the production of a number of photomontages to demonstrate how the revised proposal may appear from various viewpoints around the site.

Photomontages from a variety of representative viewpoints will be on display at our community engagement meetings on 13 and 14 June, and available to view at our online exhibition room at www.cloghercorwindfarm.com

- In accordance with planning permission, the meteorological mast ('met mast') installed on the site has been increased in height from 80m to 100m. The met mast is helping us to assess the suitability of the site for a wind energy development by measuring wind speeds and wind direction.



In accordance with the Government-led Renewable Energy Support Scheme (RESS), the project will deliver a substantial and long-term Community Benefit Fund throughout the operational lifetime of Cloghercor Wind Farm, amounting to approximately €500,000 annually, which would include a Near Neighbour Scheme.

CLOGHERCOR WIND FARM DELIVERING COMMUNITY BENEFIT

We are committed to engaging inclusively with the whole community and developing a responsible project that is good for society and for our neighbours. As experienced developers, we work with communities adjacent to our renewable energy projects to deliver sustainable, long-term community initiatives that meet local priorities, needs and objectives.

Adopting a similar approach for the proposed Cloghercor Wind Farm, we would like to begin a discussion with the local community as to how such a fund could bring local ambitions into fruition.

Examples of potential local projects include:

Accessibility improvements, recreational routes & signposting



We will engage the community on potential recreational improvements in the coming weeks

Local energy efficiency and deep retrofit programmes for homes



Skills development and training



Facilities such as football pitches or sports centres



Digital connectivity improvements




Employment initiatives and apprenticeship programmes



Local transport improvements



Linkages with local schools and colleges on STEM subjects



Support and sponsorship of local groups



Amenities such as community halls and buildings



Enterprise initiatives for local businesses





Some Wind Farm, Co Donegal



Cloghercor Wind Farm will make the Community Benefit Fund available in accordance with the Government of Ireland's Good Practice Principles Handbook for Community Benefit Funds, which will mean that the Fund will deliver initiatives that are in alignment with the UN Sustainable Development Goals.

The distribution of the Community Benefit Fund would ultimately be for the community to decide in partnership with our team, and to ensure good governance, a Fund Committee would be established. The Committee would include representation from the local community, as well as a Fund Administrator and a representative from Cloghercor Wind Farm.

If you would like to speak to us about community benefit opportunities, please get in touch – we are keen to hear from you.

NEAR NEIGHBOUR SCHEME

In addition to the Community Benefit Fund, Cloghercor Wind Farm would deliver a Near Neighbour Scheme, which provides direct payments for households located within approximately 2km of the wind farm.

The Near Neighbour Scheme would be delivered in line with Government guidelines, which ensures that those closest to the wind farm benefit from its success as well as wider community initiatives. The exact amounts depend on the final design of the development, and more details will be shared with the community as we move closer to final design later this year.

To speak to our team about how the Cloghercor Wind Farm Community Benefit Fund could benefit the local area, contact us at:

**info@cloghercorwindfarm.com
(021) 422 3677**

To share your ideas for how the development could support recreational route upgrades in the area, please contact our specialist consultant Humphrey Murphy at:

**humphrey@ilc.ie
086 265 9276**



Lisheen Wind Farm, Co Tipperary



“Onshore wind is the cheapest renewable electricity resource, and will play a vital role in helping Ireland to reach its climate goals, ensuring security of a clean, green energy supply for the future”

CLOGHERCOR WIND FARM WHY WIND ENERGY

The impacts of climate change are widely recognised as being one of the greatest global economic, environmental and social challenges facing the world today. Electricity and heat generated by fossil fuels are among the biggest polluters to our atmosphere.

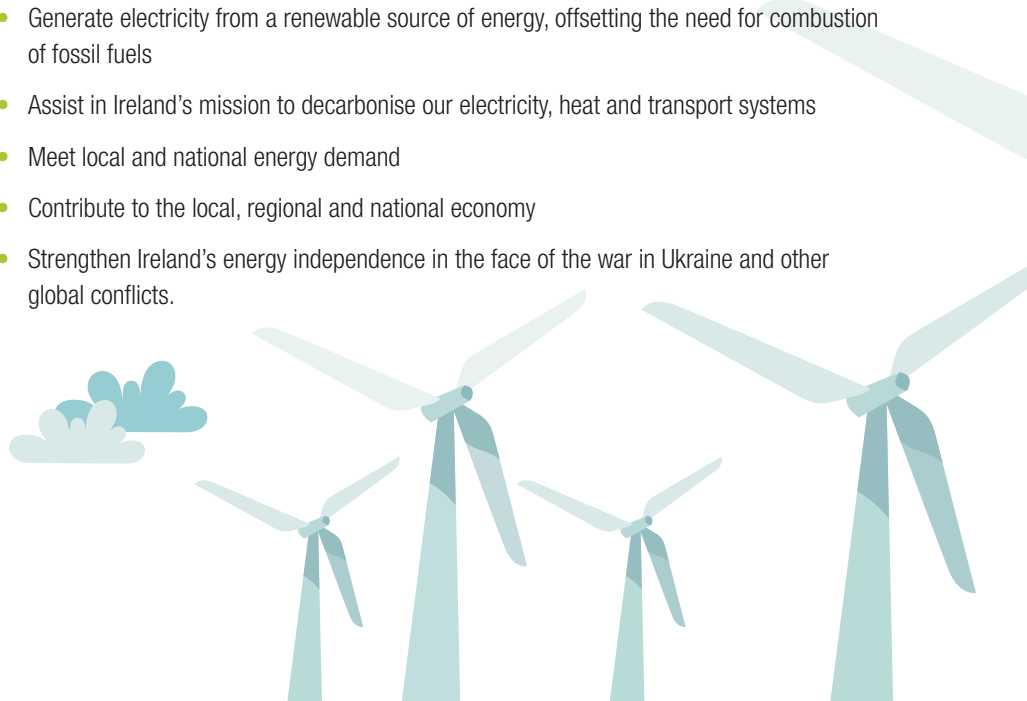
Under the Climate Action Plan (2021) the Government has set targets to:

- Meet 80% of electricity demand from renewables by 2030
- Meet 'net-zero' emissions no later than 2050

Onshore wind is the cheapest renewable electricity resource, and will play a vital role in helping Ireland to reach its climate goals, ensuring security of a clean, green energy supply for the future.

The proposed Cloghercor Wind Farm would:

- Generate electricity from a renewable source of energy, offsetting the need for combustion of fossil fuels
- Assist in Ireland's mission to decarbonise our electricity, heat and transport systems
- Meet local and national energy demand
- Contribute to the local, regional and national economy
- Strengthen Ireland's energy independence in the face of the war in Ukraine and other global conflicts.





Garracummer Wind Farm, Co Limerick

ESTIMATED PROJECT TIMELINE

We are at the second design iteration stage of the project, and the design has been refined based on ongoing environmental studies and community feedback. We now invite further engagement from the community on our latest proposal.

- **October 2019** Ecological studies commence.
- **Winter 2019** Environmental studies take place specific to the location of a planned meteorological wind measuring mast.
- **July 2020** 80m meteorological wind measuring mast installed.
- **March/April 2021** Community consultation commences with distribution of first project newsletter.
- **July 2021** Initial design and layout of the wind farm complete, and displayed in an online virtual exhibition at www.cloghercorwindfarm.com
- **November 2021** Information webinar held for the local community, with members of the project team available to answer questions.
- **February 2022** Meteorological mast ('met mast') installed on the site is increased in size by 20 metres, in line with approval received from An Bord Pleanála. A met mast informs the suitability of a site for wind farm development by carrying out detailed measurements, such as wind speed and wind direction.
- **May 2022**
Second design iteration complete, informed by studies and feedback. Refined proposal is displayed on project website, with one-to-one engagement and consultation undertaken in the community.
- **Autumn 2022** Based on feedback from the second design iteration consultation and advanced study findings, the wind farm layout will be finalised, with a final community consultation undertaken before the planning application is prepared.
- **Winter 2022** Anticipated date for submission of planning application to An Bord Pleanála.





ØRSTED AND FUTUREENERGY IRELAND – WORKING TOGETHER

Cloghercor Wind Farm is a co-development project being led by Ørsted and FuturEnergy Ireland. Both companies are contributing to the development of this renewable energy project, with Ørsted as the lead developer. FuturEnergy Ireland is a joint venture between ESB and Coillte.

Should the Cloghercor Wind Farm be successful in achieving a route to market, Coillte and other third-party landowners will lease lands to the project developers for the duration of the wind farm's operational lifecycle. The proposed wind farm would take up a very small percentage of the site area (roughly 3%), allowing the existing operational forest to co-exist alongside the wind farm development.

THE CLOGHERCOR PROJECT TEAM

Our team has extensive experience in the design, construction and operation of wind energy developments throughout Ireland and we are working closely with specialist consultants who are experts in the areas of grid, planning and wind resource.



James Dineen
Lead Project Manager, Ørsted

James Dineen is Ørsted's Project Manager for the proposed Cloghercor Wind Farm project. James brings extensive experience in renewable energy development having worked in the sector for over 10 years.



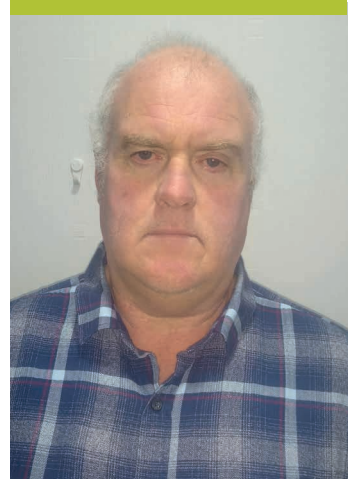
Emer Campbell
Project Manager, FuturEnergy Ireland

Emer Campbell has over 20 years' experience delivering environmental programmes and projects in Australia and Ireland. She has a background in environmental science and is passionate about delivering projects that benefit local communities and help to meet Ireland's climate targets.



Sean Doherty
Community Liaison Officer

Sean Doherty is the Community Liaison Officer for the proposed Cloghercor Wind Farm project. A resident native of Donegal, Sean is an experienced forestry manager and was involved in the planting of the Cloghercor forest site.



John Boyle
Community Liaison Officer

John is a Community Liaison Officer for the proposed Cloghercor Wind Farm. He is a dual-language speaker, and is happy to communicate with members of the community as Gaeilge.

CONTACT US

We are committed to close engagement with residents and the community and would be pleased to hear from you. You can get in touch with us using the details below:

Email: info@cloghercorwindfarm.com

Telephone: (021) 422 3677

Post: **Cloghercor Windfarm Project, Floor 5, City Quarter, Lapps Quay, Cork City, Ireland**

For more information visit our website www.cloghercorwindfarm.com



Feirm Ghaoithe Chill Gharbháin, Co. Chiarraí

FEIRM GHAOITHE AN CHLOCHAIR CHORR

Fáilte chuig an tríú nuachtlitir ó fhoireann an tionscadail don Fheirm Ghaoithe atá beartaithe don Chlochar Chorr, le bheith suite i gceantair Chlochar an Chuilinn agus an Chlochair Chorr i gContae Dhún na nGall.

Thosaigh ár rannpháirtíocht sa phobal i Mí Aibreáin 2021 nuair a d'eisigh muid an chéad nuachtlitir don tionscadal seo. Tá ár dtogra tosaigh ar taispeáint trí mheán taispeántais ar líne ó bhí Mí Iúil 2021 ann ar shuíomh gréasáin an tionscadail, ag www.cloghercorwindfarm.com.

Leanadh ar aghaidh leis an rannpháirtíocht sa phobal ar feadh na tréimhse seo, agus ár gcuid Oifigeach Idirghabhála Pobail ar fáil le freagra a thabhairt ar cheist ar bith a tháinig chun cinn; eagraíodh suíomh gréasáin eolais ar líne i Mí na Samhna 2021.

Tá muid i ndiaidh bheith ag smaoineamh go cúramach faoin aiseolas ón phobal agus measúnú a dhéanamh ar an chinneadh ó staidéar láithreáin chomhshaoil atá ag dul ar aghaidh. Tá muid sásta anois bheith in ann togra nuashonraithe a roinnt libh d'Fheirm Ghaoithe an Chlochair Chorr, mar a bhfuil i gceist laghdú ó thaobh líon na dtuirbíní de chomh maith le hathruithe maidir leis an áit ina bhfuil siad le cur.



Scéim laghdaithe
a bhfuil
21 thuirbín
i gceist léi

Ag táirgeadh thart ar

126 MW of
fuinnimh ghlais



Thart ar luach

€500,000



sochair phobail do gach
bliain ina mbíonn an feirm
ghaoithe ag feidhmiú

AMHARC AR ÁR DTOGRA NUASHONRAITHE AGUS BUAIL LEIS AN FHOIREANN

Thig leat amharc ar an dearadh agus ar an leagan amach atá beartaithe againn don feirm ghaoithe ar an chéad leathanach eile. Thig leat bheith ag amharc air ag: www.cloghercorwindfarm.com. Soláthraíonn an suíomh gréasáin seo léarscáileanna nua chomh maith le hamharcléirithe den scéim, chomh maith le heolas breise faoi na staidéir mhionsonraithe atá ar siúl ar an láithreán.

Tugann muid cuireadh duit fosta le coinne a dhéanamh le bualadh lenár bhfoireann áitiúil tionscadail, foghlaim níos mó faoin togra, agus ceisteanna ar bith atá agat a chur.

Cuir ríomhphost chugainn ag info@cloghercorwindfarm.com nó cuir glao ar Shean nó ar John, ár gcuid Oifigeach Idirghabhála Pobail ar **(021) 422 3677** le cruinniú a eagrú ar cheann den dhá dháta seo a leanas:

Halla Naomh Bríde, Maigh Dabhcha, Leitir Mhic an Bhaird,
Dé Luain 13 Meitheamh, 12 in – 8 in

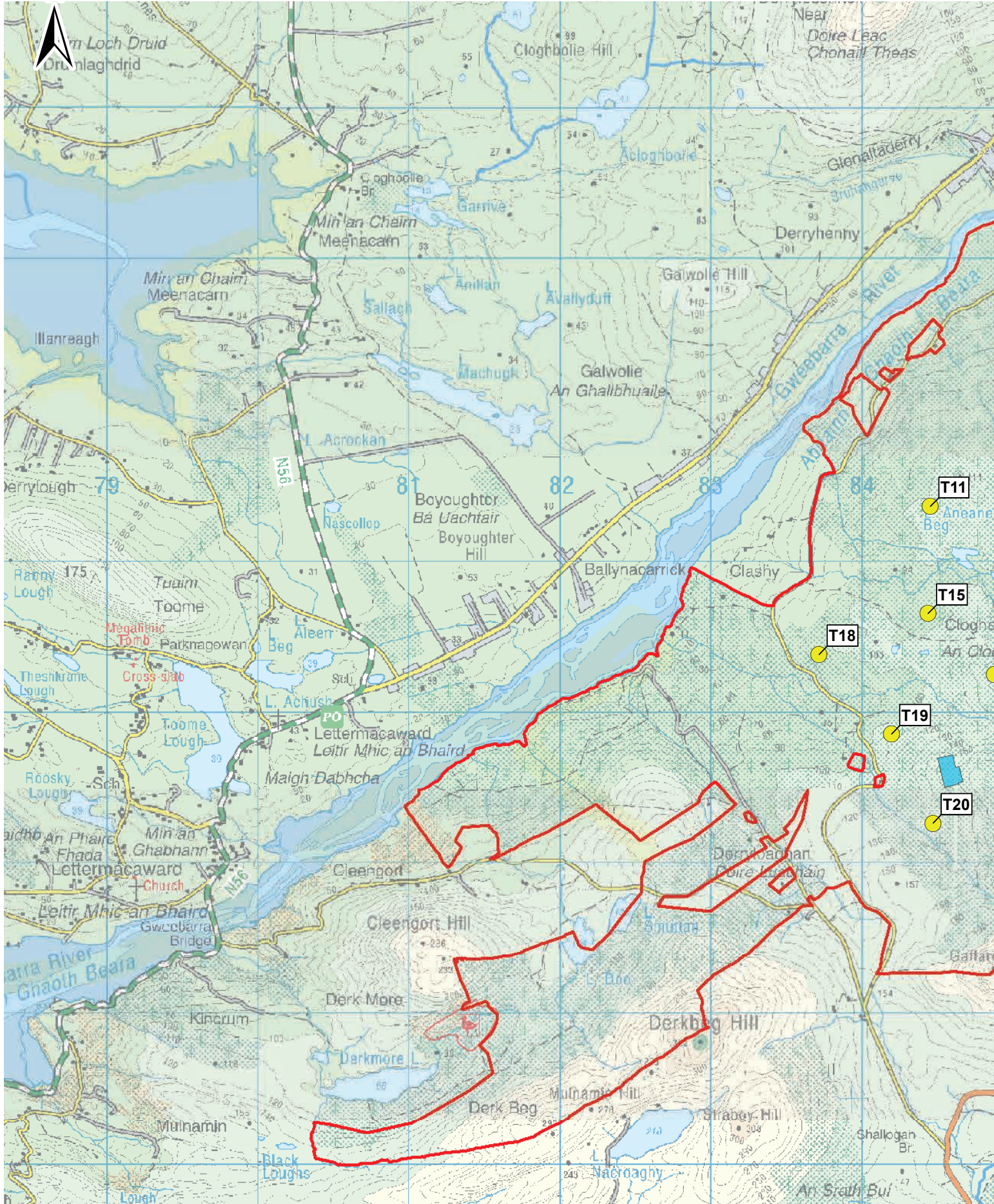
Teach Gleann Ceo, an Phríomhshráid, an Dúchoraidh,
Dé Máirt 14 Meitheamh, 12 in – 8 in



Feirm Ghaoithe an tSóirn, Co. Dhún na nGall

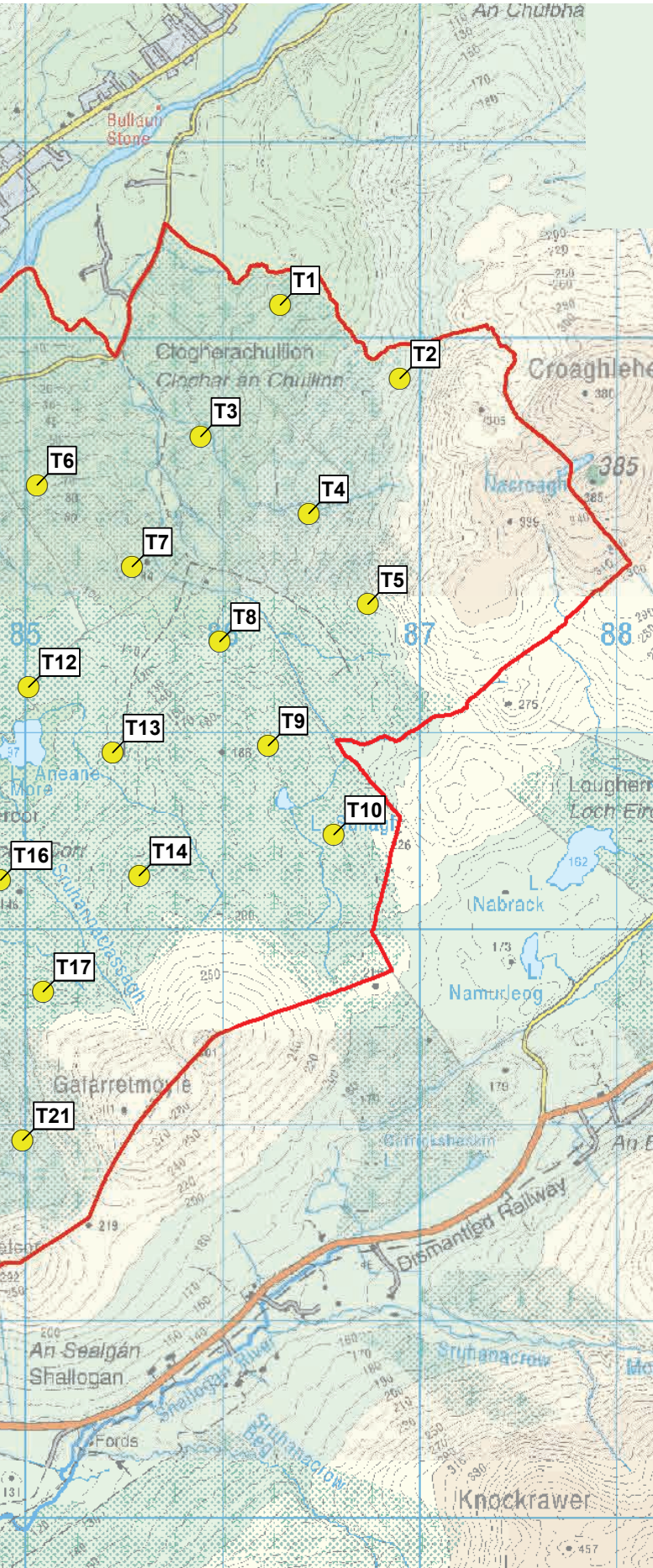
FEIRM GHAOITHE AN CHLOCHAIR CHORR

LEAGAN DEARTHÁ 2 – SUÍOMH & LEAGAN AMACH



NUASHONRÚ TIONSCADAIL

Ó BHÍ ÁR NUACHTLITIR DHEIREANACH ANN:



Tá an togra athbheithithe againn d'Fheirm Ghaoithe an Chlochair Chorr le cinneadh ár staidéir ar an láthair, atá ag dul ar aghaidh go fóill, a léiriú. Cuimsíonn ár dtogra nuashonraithe forbairt níos dlúithe anois, a bhfuil 21 thuirbín i gceist léi.

Tá muid ag leanúint ar aghaidh lenár gcuid suirbhéanna iomadúla éiceolaíochta agus comhshaoil ar an láthair. Tá mar chuid de na suirbhéanna seo staidéir faoi ghníomhaíocht uisceach, sciathán leathair agus éan ar an láthair.

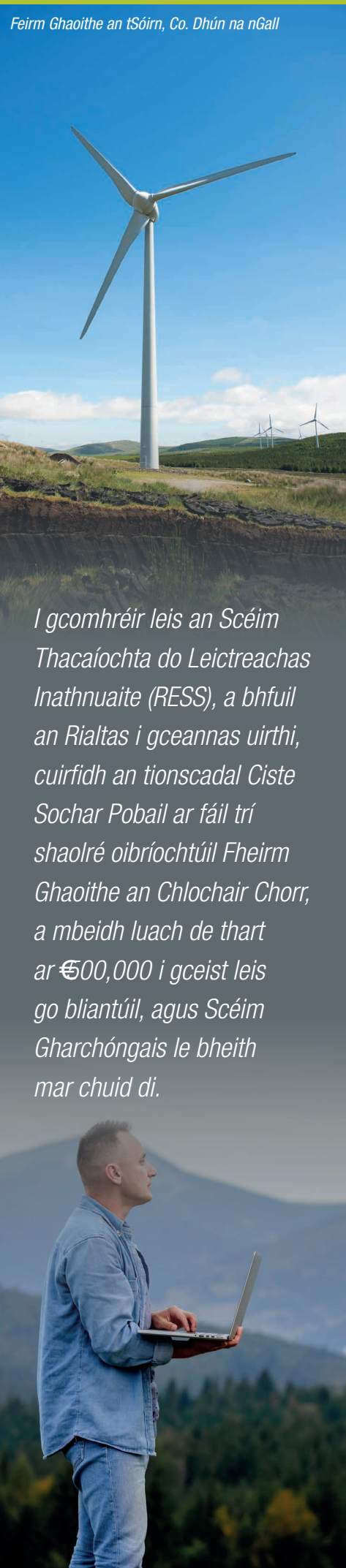


Tá staidéir éiceolaíochta ag dul ar aghaidh ar an láthair.

Tá measúnuithe tírdhreacha agus amhairc ag dul ar aghaidh, le táirgeadh roinnt fótamontáisí le léiriú cén chuma a dtiocfadh leis a bheith ar an togra athbheithithe ó ionaid amhairc éagsúla timpeall an láithreáin.

Beidh fótamontáisí ó raon éagsúil ionad amhairc ionadaíoch ar taispeáint ag ár gcruinnithe rannpháirtíochta pobail ar 13 agus ar 14 Meitheamh, agus iad ar fáil le feiceáil ag ár seomra taispeántais ar líne ag www.cloghercorwindfarm.com

I gcomhréir le cead pleanála, méadaíodh airde an chrainn mheitéareolaíoch atá le suiteáil ar an láithreán ó 80m go 100m. Tá an crann mheitéareolaíoch ag cuidiú linn le measúnú a dhéanamh ar oiriúnacht an láithreáin d'fhorbairt fhuinnimh ghaoithe trí bheith ag tomhas luasanna gaoithe agus treoir ghaoithe.



I gcomhréir leis an Scéim Thacaíochta do Leictreachas Inathnuaite (RESS), a bhfuil an Rialtas i gceannas uirthi, cuirfidh an tionscadal Ciste Sochar Pobail ar fáil trí shaolré oibríochtúil Fheirm Ghaoithe an Chlochair Chorr, a mbeidh luach de thart ar €500,000 i gceist leis go bliantúil, agus Scéim Gharchóngais le bheith mar chuid di.

FEIRM GHAOITHE AN CHLOCHAIR CHORR AG CUR SOCHAR POBAIL AR FÁIL

Tá muid tiomanta do bheith rannpháirteach go cuimsitheach leis an phobal ar fad, agus tionscadal freagrach á fhorbairt againn atá maith don tsochaí agus d'ár gcuid comharsana. Mar fhorbróirí le taithí, bíonn muid ag obair le pobail atá ina gcónaí in aice lenár gcuid tionscadal fuinnimh inathnuaite le tionscnaimh phobail inbhuanaithe, fhadtéarmacha a chur ar fáil a dhéanann freastal ar thosaíochtaí, ar riachtanais agus ar chuspóirí áitiúla.

Agus muid ag glacadh le cur chuige den chineál céanna don Fheirm Ghaoithe atá beartaithe don Chlochar Chorr, ba mhaith linn tús a chur le plé leis an phobal áitiúil maidir le cén dóigh a dtiocfadh lena leithéid de chiste mianta an phobail áitiúil a thabhairt chun críche.

Seo a leanas samplaí den chineál tionscadail áitiúil a dtiocfadh leis a bheith i gceist:

Feabhsúcháin inrochtaineachta, bealaí caithimh aimsire & comharthaí bóthair



Beidh muid ag plé leis an phobal maidir leis na feabhsúcháin sin a dtiocfadh linn iad a dhéanamh ó thaobh caithimh aimsire de sna seachtainí atá romhainn.

Cláir áitiúla éifeachtúlachta fuinnimh agus iarfheistithe dhomhain do na tithe



Forbairt scileanna agus oiliúint



Áiseanna mar shampla páirceanna peile nó lárionaid spóirt



Feabhsúcháin maidir le nascacht dhigiteach



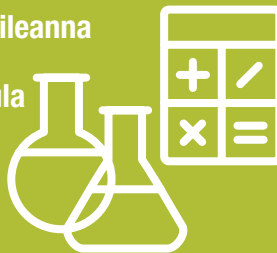
Tionscnaimh fhostaíochta agus cláir phrintíseachta



Feabhsúcháin maidir leis an chóras iompair áitiúil



Naisc le scoileanna agus le coláistí áitiúla faoi ábhair ETIM



Tacaíocht do ghrúpaí áitiúla agus urraíocht déanta orthu



Áiseanna éagsúla mar shampla hallaí agus foirgnimh phobail



Tionscnaimh fhiontair do ghnólachtaí áitiúla



Feirm Ghaoithe an tSóirn, Co. Dhún na nGall



Cuirfidh Feirm Ghaoithe an Chlochair Chorr an Ciste Sochar Pobail ar fáil de réir Lámhleabhar Rialtas na hÉireann faoi Phrionsabail Dea-Chleachtais do Chistí Sochar Pobail, rud a chiallóidh go gcuirfidh an Ciste tionscnaimh ar fáil a chomhréitíonn le Spriocanna Forbartha Inbhuanaithe na Náisiún Aontaithe.

Sa deireadh thiar thall bheadh sé suas don phobal socrú a dhéanamh, i gcomhpháirtíocht lenár bhfoireann, maidir le dáileadh an Chiste Sochar Pobail. Chun dea-rialachas a chinntiú, bhunófaí Coiste Ciste. Bheadh ionadaithe ón phobal áitiúil mar chuid den Choiste, chomh maith le Riarthóir Ciste agus ionadaí ó Fheirm Ghaoithe an Chlochair Chorr.

Dá mba mhian leat labhairt linn faoi dheiseanna sochair phobail, déan teagmháil linn – ba bhreá linn cloisteáil uait.

AN SCÉIM GHARCHÓNGAIS

Chomh maith leis an Chiste Sochar Pobail, chuirfeadh Feirm Ghaoithe an Chlochair Chorr Scéim Gharchóngais ar fáil, a sholáthraíonn íocaíochtaí díreacha do theaghligh atá lonnaithe níos lú ná 2km ón fheirm ghaoithe.

Chuirfí an Scéim Gharchóngais ar fáil de réir threoirínte an Rialtais, a chinntíonn go mbaineann na daoine sin is cóngaraí a chónaíonn don fheirm ghaoithe leas as a rath chomh maith le tionscnaimh phobail níos leithne. Bíonn na suimeanna cruinne ag brath ar dhearadh deiridh na forbartha, agus roinnfear tuilleadh sonraí leis an phobal nuair a bheid muid níos cóngaraí do chéim an deartha dheiridh níos faide anonn i mbliana.

Le labhairt lenár bhfoireann faoin dóigh a dtiocfadh le Ciste Sochar Pobail Fheirm Ghaoithe an Chlochair Chorr dul chun tairbhe an cheantair áitiúil, déan teagmháil linn ag:
info@cloghercorwindfarm.com
(021) 422 3677

Le do chuid smaointe a roinnt linn faoin tslí ina dtiocfadh leis an fhorbairt tacú le huasghráduithe bealaigh caithimh aimsire sa cheantar, déan teagmháil lenár sainchomhairleoir Humphrey Murphy ag:

humphrey@ilc.ie
086 265 9276



Feirm Ghaoithe an Lisín, Co. Thiobraid Árann



“Is í an ghaoth ar talamh an acmhainn leictreachais inathnuaite is saoire atá ann, agus cuirfidh sí ról ríthábhachtach i gcrích le cabhrú le hÉirinn a cuid spriocanna aeráide a bhaint amach, ag cinntiú soláthar seasmhach fuinnimh ghlain, ghlais don todhchaí.”



FEIRM GHAOITHE AN CHLOCHAIR CHORR CAD CHUIGE A BHFUIL FUINNEAMH GAOITHE DE DHÍTH?

Aithnítear go forleathan tionchair an athraithe aeráide mar cheann de na dúshláin dhomhanda eacnamaíocha, chomhshaoil agus shóisialta atá os comhair an tsaol inniu. Tá an leictreachas agus an teas a ghintear ag breoslaí iontaise i measc na rudaí is mó a thruaillíonn ár n-atmaisféar.

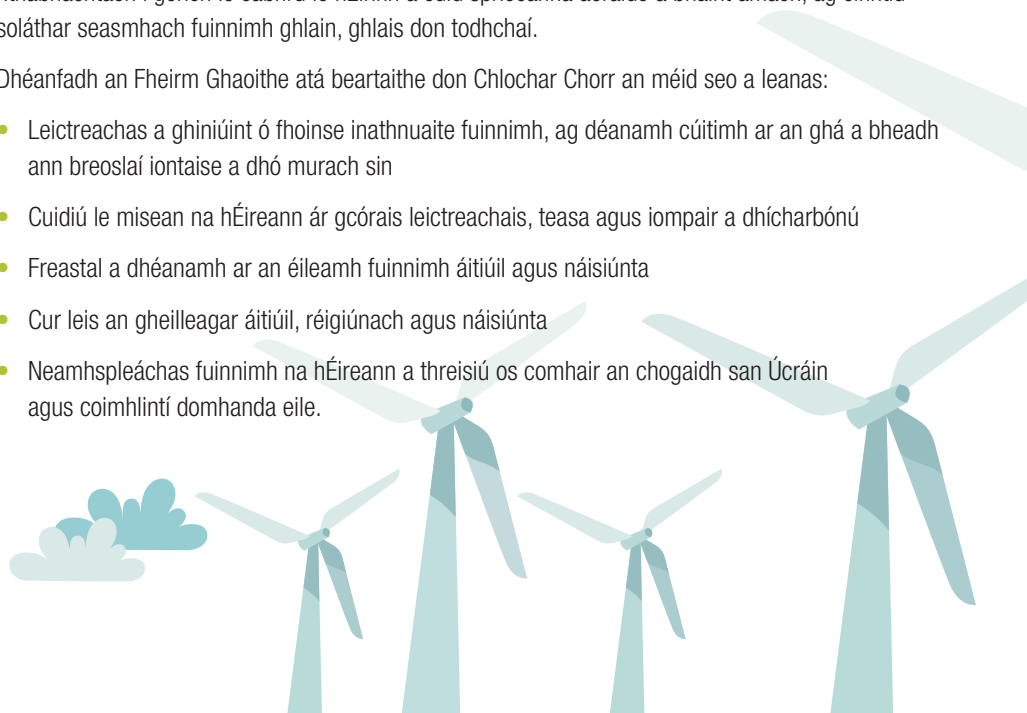
Faoin Phlean Gníomhaithe ar son na hAeráide (2021) tá na spriocanna seo a leanas leagtha síos ag an Rialtas:

- 80% den éileamh leictreachais a chomhlíonadh ó fhoinsí inathnuaite faoi 2030
- Spriocanna astaíochtaí neodrach ó thaobh fuinnimh de’ a chomhlíonadh chan níos moille ná 2050

Is í an ghaoth ar talamh an acmhainn leictreachais inathnuaite is saoire atá ann, agus cuirfidh sí ról ríthábhachtach i gcrích le cabhrú le hÉirinn a cuid spriocanna aeráide a bhaint amach, ag cinntiú soláthar seasmhach fuinnimh ghlain, ghlais don todhchaí.

Dhéanfadh an Fheirm Ghaoithe atá beartaithe don Chlochair Chorr an méid seo a leanas:

- Leictreachas a ghiniúint ó fhoinsé inathnuaite fuinnimh, ag déanamh cúitimh ar an ghá a bheadh ann breoslaí iontaise a dhó murach sin
- Cuidiú le misean na hÉireann ar gcórais leictreachais, teasa agus iompair a dhícharbónú
- Freastal a dhéanamh ar an éileamh fuinnimh áitiúil agus náisiúnta
- Cur leis an gheilleagar áitiúil, réigiúnach agus náisiúnta
- Neamhspleáchas fuinnimh na hÉireann a threisiú os comhair an chogaidh san Úcráin agus coimhlíntí domhanda eile.





Feirm Ghaoithe Gharraí an Chomair, Co. Luimnigh

AMLÍNE MEASTA AN TIONSCADAIL

Tá muid ag céim an dara leagan deartha den tionscadal, agus beachtaíodh an dearadh bunaithe ar staidéar comhshaoil atá ag dul ar aghaidh, agus ar aiseolas ón phobal. Tá muid anois ag lorg tuilleadh rannpháirtíochta ón phobal faoi thogra is déanaí s'againne.

- **Deireadh Fómhair 2019** Cuirtear tús leis an staidéar éiceolaíoch.
- **Geimhreadh 2019** Déantar staidéar comhshaoil a bhaineann go sonrach le lonnú crainn mheitéareolaíoch atá beartaithe le gaoth a thomhas.
- **Mí Iúil 2020** Crann meitéareolaíoch 80m suiteáilte le gaoth a thomhas.
- **Mí Mhárta/Mí Aibreáin 2021** Cuirtear tús le comhairliúchán pobail le dáileadh na chéad nuachtlitreach tionscadail.
- **Mí Iúil 2021** Dearadh agus leagan amach tosaigh na feirme gaoithe tugtha chun críche, agus iad ar taispeáint i dtaispeántas fíorúil ar líne ag www.cloghercorwindfarm.com
- **Mí na Samhna 2021** Seimineár gréasáin eolais eagraithe don phobal áitiúil, agus bail den fhoireann tionscadail ar fáil le freagra a thabhairt ar cheisteanna.
- **Mí Feabhra 2022** Méadaítear an crann meitéareolaíoch atá le suiteáil ar an láithreán i méid faoi 20 méadar, de réir an fhaofa a fhaightear ón Bhord Pleanála. Déanann crann meitéareolaíoch eolas d'oiriúnacht láithreáin d'fhorbairt fheirme gaoithe trí chur i gcrích tomhas mionsonraithe, leithéidí luas gaoithe agus treoir ghaoithe.
- **Bealtaine 2022** Dara leagan deartha críochnaithe, agus staidéar agus aiseolas ag déanamh eolais dóibh. Taispeántar an togra beachtaithe ar shuíomh gréasáin an tionscadail, agus tugtar faoi rannpháirtíocht agus comhairliúchán duine le duine sa phobal.
- **Fómhar 2022** Bunaithe ar aiseolas ó chomhairliúchán agus ó chinneadh ardstaidéir an dara leagain deartha, tabharfar leagan amach na feirme gaoithe chun críche; tabharfar faoi chomhairliúchán deiridh leis an phobal sula n-ullmhaítear an t-iarratas pleanála.
- **Geimhreadh 2022** Dáta a bhfuiltear ag súil leis go gcuirfean an t-iarratas pleanála faoi bhráid an Bhoird Phleanála.





ØRSTED AGUS FUTUREENERGY ÉIRE – AG OBAIR LE CHÉILE

Is tionscadal comhfhobartha é Feirm Ghaoithe an Chlochair Chorr a bhfuil Ørsted agus FuturEnergy Éire i gceannas air. Tá an dá chomhlacht ag cur le forbairt an tionscadail fhuinnimh inathnuaite seo, agus Ørsted mar phríomhfhorbóir air. Is comhfhiontar é FuturEnergy Éire idir BSL agus Coillte.

Má éiríonn le Feirm Ghaoithe an Chlochair Chorr bealach chun margaidh a bhaint amach, tógfaidh Coillte agus úinéirí talún tríú páirtí eile tailte ar léas d'fhorbróirí an tionscadail a fhad is a bheidh an fheirm ghaoithe ag feidhmiú. Ní thógfadh an fheirm ghaoithe atá beartaithe suas ach céatadán an-bheag de limistéar an láithreáin (thart ar 3%), rud a cheadódh go mbeadh an choill atá ann cheana in ann leanúint uirthi in éineacht le forbairt na feirme gaoithe.

FOIREANN TIONSCADAIL AN CHLOCHAIR CHORR

Tá neart taithí ag ár bhfoireann maidir le dearadh, tógáil agus feidhmiú fhorbairtí fuinnimh ghaoithe ar fud na hÉireann agus tá muid ag comhoibriú go dlúth le sainchomhairleoirí, ar saineolaithe iad i réimsí na heangáil fuinnimh, na pleanála agus na hacmhainne gaoithe.



James Dineen
Príomhbhainisteoir
Tionscadail, Ørsted

Is é James Dineen Bainisteoir Tionscadail Ørsted do thionscadal beartaithe Fheirm Ghaoithe an Chlochair Chorr. Tá neart taithí ag James i bhforbairt an fhuinnimh inathnuaite, i ndiaidh dó bheith ag obair san earnáil le breis is 10 mbliana anuas.



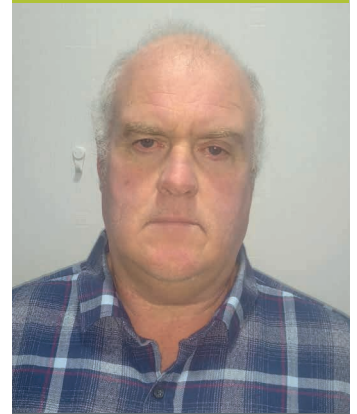
Emer Campbell
Bainisteoir Tionscadail,
FuturEnergy Éire

Tá taithí de bhreis is 20 bliain ag Emer Campbell de bheith ag seachadadh clár agus tionscadal comhshaoil san Astráil agus in Éirinn. Tá cúlra aici san eolaíocht chomhshaoil agus tá sí paiseanta faoi bheith ag cur tionscadail ar fáil a théann chun tairbhe an phobail áitiúil agus a chuidíonn le spriocanna aeráide na hÉireann a chomhlíonadh.



Sean Doherty
An tOifigeach Idirghabhála
Pobail

Is é Sean Doherty an tOifigeach Idirghabhála Pobail don tionscadal beartaithe maidir le Feirm Ghaoithe an Chlochair Chorr. Is Conallach é Sean, agus é ina chónaí sa chontae; tá a lán taithí ag Sean mar bhainisteoir foraoiseachta agus bhí baint aige le plandáil láithreán foraoise an Chlochair Chorr.



John Boyle
An tOifigeach Idirghabhála
Pobail

Is Oifigeach Idirghabhála Pobail é John don Fheirm Ghaoithe atá beartaithe ag an Chlochar Chorr. Tá Gaeilge aige, agus é breá sásta bheith ag caint leis an phobal i nGaeilge.

DÉAN TEAGMHÁIL LINN

Tá muid tiomanta don fhíor-rannpháirtíocht le cónaitheoirí agus leis an phobal agus bheimis sásta cloisteáil uait. Thig leat dul i dteagmháil linn trí na sonraí teagmhála thíos a úsáid:

R-phost: info@cloghercorwindfarm.com

Teileafón: (021) 422 3677

Post: **Tionscadal Feirme Gaoithe an Chlochair Chorr, Urlár 5, Ceathrú na Cathrach, Cé an Lapaigh, Cathair Chorcaí, Éire**

Le tuilleadh eolais a fháil tabhair cuairt ar ár suíomh gréasáin www.cloghercorwindfarm.com