



*Kilgarvan Wind Farm, Co Kerry*

## CLOGHERCOR WIND FARM

**Welcome to the second newsletter from the project team for the proposed Cloghercor Wind Farm. In this newsletter, we are pleased to present an initial design and invite you to attend our upcoming virtual consultation event to learn more about our proposals.**

Since our last newsletter, there have been some corporate changes at both Brookfield Renewable and Coillte.





Ørsted has signed an agreement with Brookfield to acquire Brookfield's Irish and UK renewable platform and pipeline projects, including the Cloghercor project.

Coillte have agreed to create a Joint Venture company with ESB and together they will develop their pipeline of onshore wind projects.

Both companies will shortly begin operating under their new names, however the people involved in the Cloghercor project remain unchanged, including our contact details. Our proposals for Cloghercor Wind Farm will continue to be progressed by our experienced and professional Ireland-based team.

Since 2019 we have been undertaking detailed ecological and feasibility studies around the townlands of Clogherachullion and Cloghercor for a potential wind energy project.

Further to the outcome of these studies we are delighted to now be at the stage where we can present an initial proposal and layout for the proposed Cloghercor Wind Farm, consisting of:

<p><b>Proposal for 23 turbines</b></p> 	<p><b>200m tip height</b></p> 
<p><b>Potentially 140 MW</b></p> 	<p><b>A substantial community benefit package</b></p> 

You can view the proposed design and layout of the wind farm overleaf.

## VISIT OUR ONLINE EXHIBITION

**We appreciate that the ongoing Covid-19 restrictions make face-to-face engagement with the local community challenging. Whilst under normal circumstances we would undertake door-to-door house calls and local exhibitions, this is unfortunately not possible in the current circumstances.**

However, we are pleased to invite you to visit our online exhibition where you can:

- View more detail on our proposed design for Cloghercor Wind Farm
- Hear from our team in a video update
- Submit questions about the project and give us your feedback.

**The exhibition will be live from Monday 28 June, where we invite you to access the materials and provide your feedback.**

**Visit the exhibition at: [www.cloghercorwindfarm.com](http://www.cloghercorwindfarm.com)**

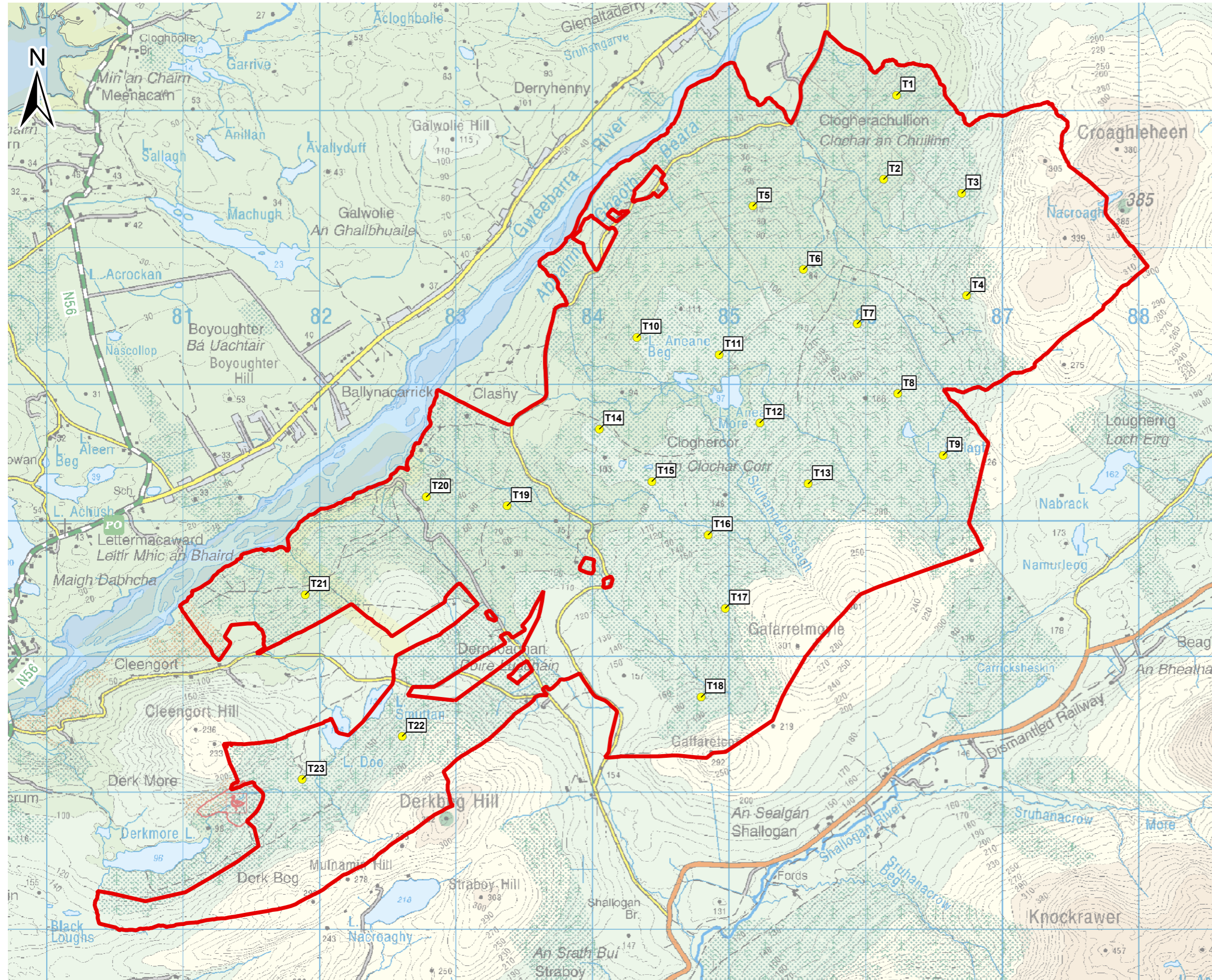
If you cannot access the virtual exhibition or wish to access the materials in an alternative way, please contact us and we will do our best to accommodate your requirements.

We sincerely hope that as our plans progress we will be able to hold in-person events to present and discuss our proposals in due course. If you wish to meet us to discuss the proposal in a Covid-19 secure meeting, please contact us.



*Sorne Wind Farm, Co Donegal*

**CLOGHERCOR WIND FARM**  
**DESIGN ITERATION 1 – LOCATION & LAYOUT**



**PROJECT UPDATE**  
**SINCE OUR LAST NEWSLETTER:**

We have completed initial assessments within the Project Study Area. Based upon the findings of these assessments, the Study Area has been reduced down to a Buildable Area from which a layout design, including preliminary wind turbine locations, is arrived at. Design Iteration 1 is adjacent.

We will be holding a virtual exhibition event to display further details of Design Iteration 1 and the findings of our initial studies. Visit [www.cloghercorwindfarm.com](http://www.cloghercorwindfarm.com) from 28 June to view the materials and provide your feedback.

An Bord Pleanála has approved an appeal to increase the height of the existing meteorological mast (met mast) on the site. Construction of the 20m extension to this met mast is due to commence in July. A met mast informs the suitability of a site for potential wind farm development by carrying out a number of detailed measurements, such as wind speed and wind direction.

Background Noise monitoring is due to commence in the coming weeks. This involves the placing of a number of noise monitoring units (like the one pictured) around the proposed site. This monitoring will allow us to compile a robust noise impact assessment and integrate our findings into the design process.



We have completed a LiDAR flyover of the proposed site, conducted to assess the height of forestry in the area. This helps inform our wind analysis team of the effect of forestry on the productivity of the site over the lifetime of the wind farm.

We hope to conduct a pre-application meeting with An Bord Pleanála to determine if Cloghercor Wind Farm can be considered as a Strategic Infrastructure Development (SID). SIDs are submitted directly to An Bord Pleanála for determination.



Some Wind Farm, Co Donegal



Garracummer Wind Farm, Co Limerick

“We are currently at Design Iteration 1. There will be two more design stages to be undertaken based on the findings of further site investigations and valued stakeholder feedback before we prepare a final planning submission.”

### CLOGHERCOR WIND FARM DESIGN ITERATION 1

The locations of the proposed wind turbines and all other proposed infrastructure is informed by rigorous site investigations and assessments which include:

- Ecological Surveys
- Ornithological Surveys
- Geotechnical, Hydrological and Geological Site Investigations
- Shadow Flicker Modelling
- Noise Modelling
- Archaeological Surveys
- Landscape and Visual Assessment
- Wind Resource Modelling

Based upon the findings of these assessments, the Study Area has been reduced down to a Buildable Area from which a layout design, including preliminary wind turbine locations, is arrived at. Many sections of the initial Study Area have now been excluded in order to form the Buildable Area.

The Buildable Area is continuously updated throughout the design process. We are currently at Design Iteration 1. There will be two more design stages to be undertaken based on the findings of further site investigations and valued stakeholder feedback before we prepare a final planning submission.

The Buildable Area factors in numerous constraints, including:

- Setback distance from Special Protection Areas and the National Heritage Areas
- 750 meter minimum setback from dwellings
- Avoidance of areas of steep ground slope
- 50 meter setback from watercourses
- Avoidance of areas with excessive deep peat
- Optimisation of design for visual impact
- Setback from public roads and overhead powerlines
- Setback from, and alignment with, archaeological and cultural heritage features.

Future design stages are likely to reduce the Buildable Area further as additional constraints are taken into consideration.



Lisheen Wind Farm, Co Tipperary

### DELIVERING COMMUNITY BENEFIT

We are committed to delivering local benefits and we want to work closely with the community nearby to the proposed site to ensure that we can help bring forward and support sustainable, long-term community initiatives.

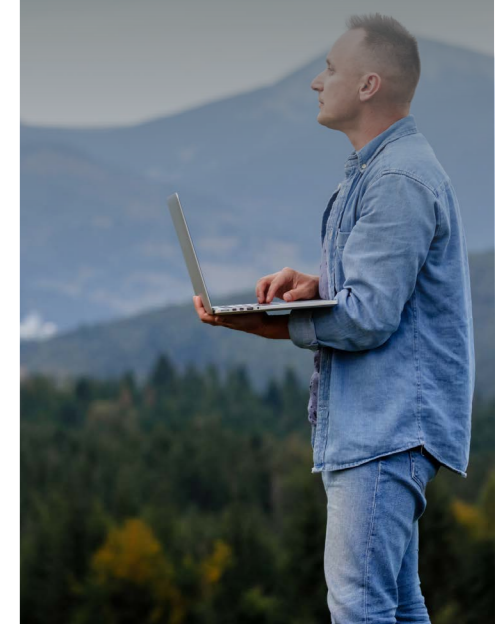
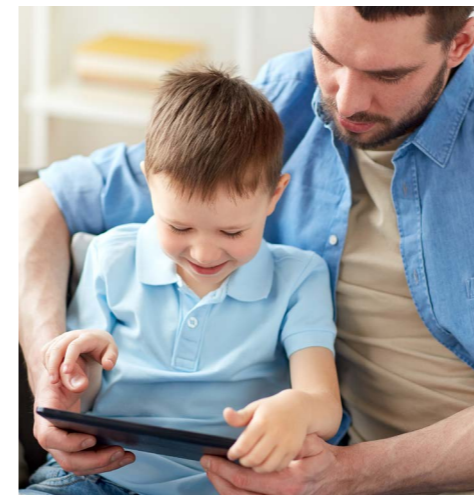
In accordance with the government-led Renewable Energy Support Scheme (RESS), the project will deliver a substantial and long-term community benefit fund throughout the period that the wind farm is commissioned. This will include a near neighbour scheme.

We would like to begin a discussion with the community as to how such a fund could be directed towards local needs, amenities and services, such as:

- Local recreational facilities
- Broadband and connectivity upgrades
- Education, skills and employment initiatives
- Local services such as community halls or community event sponsorship.

If you would like to speak to us about the community benefit opportunities, please get in touch – we are keen to hear from you.

“We would like to begin a discussion with the community as to how such a fund could be directed towards local needs, amenities and services.”



## ESTIMATED PROJECT TIMELINE

We are in the very early stages of project development and there will be many opportunities to engage the team and inform the design of the project as we progress.

- October 2019** Ecological studies commence.
- Winter 2019** Environmental studies take place specific to the location of a planned meteorological wind measuring mast.
- July 2020** 80m meteorological wind measuring mast installed.
- March/April 2021** Community consultation commences with distribution of first project newsletter.
- June 2021** Initial design and layout of the wind farm complete and first virtual exhibition event will take place.
- July 2021** Met mast installed on the site to be increased in height to 100m.
- Autumn 2021** Second design iteration complete, informed by studies and feedback. We will consult the community on the second design iteration.
- Early 2022** Final wind farm design complete, informed by studies and feedback.
- Summer 2022** Anticipated date for submission of planning application to consenting authority.

## THE CLOGHERCOR PROJECT TEAM

Our team has extensive experience in the design, construction and operation of wind energy developments throughout Ireland and we are working closely with specialist consultants who are experts in the areas of grid, planning and wind resource.



**James Dineen**  
*Lead Project Manager*

James Dineen is Ørsted's Project Manager for the proposed Cloghercor Wind Farm project. James brings extensive experience in renewable energy development having worked in the sector for over 10 years.



**Sean Doherty**  
*Community Liaison Officer*

Sean Doherty is the Community Liaison Officer for the proposed Cloghercor Wind Farm project. A resident native of Donegal, Sean is an experienced forestry manager and was involved in the planting of the Cloghercor forest site.



**Ciara Conboy**  
*Project Manager, Coillte*

Ciara Conboy is Coillte's Project Manager for the proposed Cloghercor Wind Farm project. Ciara has recently joined the Coillte Renewables Team bringing experience from a range of renewable energy projects across the country.

## CONTACT US

We are committed to close engagement with residents and the community and would be pleased to hear from you. You can get in touch with us in advance, during and after our virtual exhibition using the details below:

Email: [info@cloghercorwindfarm.com](mailto:info@cloghercorwindfarm.com)

Telephone: (021) 422 3677

Post: **Cloghercor Windfarm Project, Floor 5, City Quarter, Lapps Quay, Cork City, Ireland**

For more information visit our website [www.cloghercorwindfarm.com](http://www.cloghercorwindfarm.com)



# feirm ghaoithe an Chlochair Chorr



Feirm Ghaoithe Chill Gharbháin, Contae Chiarraí

## FEIRM GHAOITHE AN CHLOCHAIR CHORR

Fáilte go dtí an dara nuachtlitir ó fhoireann an tionscadail don Fheirm Ghaoithe atá molta don Chlochar Chorr. Sa nuachtlitir seo, tá lúcháir orainn dearadh tosaigh a chur in bhur láthair agus cuireadh a chur oraibh freastal ar an imeacht fhíorúil comhairliúcháin atá ag dul a bheith againn le tuilleadh a fháil amach fá na tograí atá againn.

Ón nuachtlitir dheireanach a bhí againn, tá cúpla athrú corparáideach i ndiaidh a bheith ann, in Brookfield Renewable agus Coillte araon.

Tá comhaontú sínithe ag Ørsted le Brookfield go bhfaighidh Ørsted tionscadail ardáin agus píblíne in-athnuaite Brookfield, in Éirinn agus sa Ríocht Aontaithe, tionscadal an Chlochair Chorr san áireamh.

Tá comhaontú tugtha ag Coillte Cuideachta Comhfhiontair a chruthú le Bord Soláthair an Leictreachais agus déanfaidh siad píblíne de thionscadail ghaoithe ar tír a fhorbairt i dteannta a chéile.

Beidh an dá chuideachta ag cur tús gan mhoill le feidhmiú faoina n-ainmneacha nua, ach níl athrú le teacht ar na daoine a mbeidh baint acu le tionscadal an Chlochair Chorr, sonraí teagmhála san áireamh. Déanfaidh an fhoireann ghairmiúil atá againn in Éirinn, a bhfuil an-taithí aici, na tograí atá againn fá choinne Fheirm Ghaoithe an Chlochair Chorr a chur chun cinn.

Ó bhí 2019 ann, tá muid i ndiaidh tabhairt faoi staidéir mhionsonraithe éiceolaíochta agus indéantachta fá choinne thionscadal fuinnimh ghaoithe a d'fhéadfadh a bheith ann, idir na bailte fearainn Clochar an Chuilinn agus an Clochar Corr.

Anuas ar thorthaí na staidéar sin, tá lúcháir orainn go bhfuil muid ag an chéim seo go dtig linn togra agus leagan amach tosaigh a chur i láthair don Fheirm Ghaoithe atá molta don Chlochar Corr, a mbeidh na codanna seo mar chuid di:

Togra fá choinne 23 thuirbín



Bior  
200 m  
ar airde



140 MW  
b'fhéidir



Pacáiste suntasach  
chun leasa an phobail



## TABHAIR CUAIRT AR AN TAISPEÁNTAS FHÍORÚIL S'AGAINNE

Tuigeann muid go bhfuil sé doiligh plé leis an phobal áitiúil duine le duine cionn is go bhfuil sriantaí COVID-19 go fóill i bhfeidhm i láthair na huair. Dá mbeadh cúrsaí mar is gnáth, bheadh muid ag bualadh isteach chuig daoine ó theach go teach agus bheadh taispeántais áitiúla againn ach ní thig a dhéanamh toisc an dóigh a bhfuil rudaí fá láthair.

Sin ráite, tá lúcháir orainn cuireadh a chur oraibh cuairt a thabhairt ar an taispeántas ar líne atá againn, áit a dtig leat na rudaí seo a dhéanamh:

- Tuilleadh sonraí a fháil fán dearadh atá molta againn fá choinne Fheirm Ghaoithe an Chlochair Chorr
- Éisteacht leis an fhoireann s'againne i bhfíseán ina dtugtar an t-eolas is úire
- Ceisteanna a chur isteach fán tionscadal agus aiseolas a thabhairt dúinn.

**Beidh an taispeántas beo ón Luain, an 28 Meitheamh, agus tugann muid cuireadh daoibh an t-ábhar a chíoradh agus aischothú a thabhairt.**

**Amharc an taispeántas anseo: [www.cloghercorwindfarm.com](http://www.cloghercorwindfarm.com).**

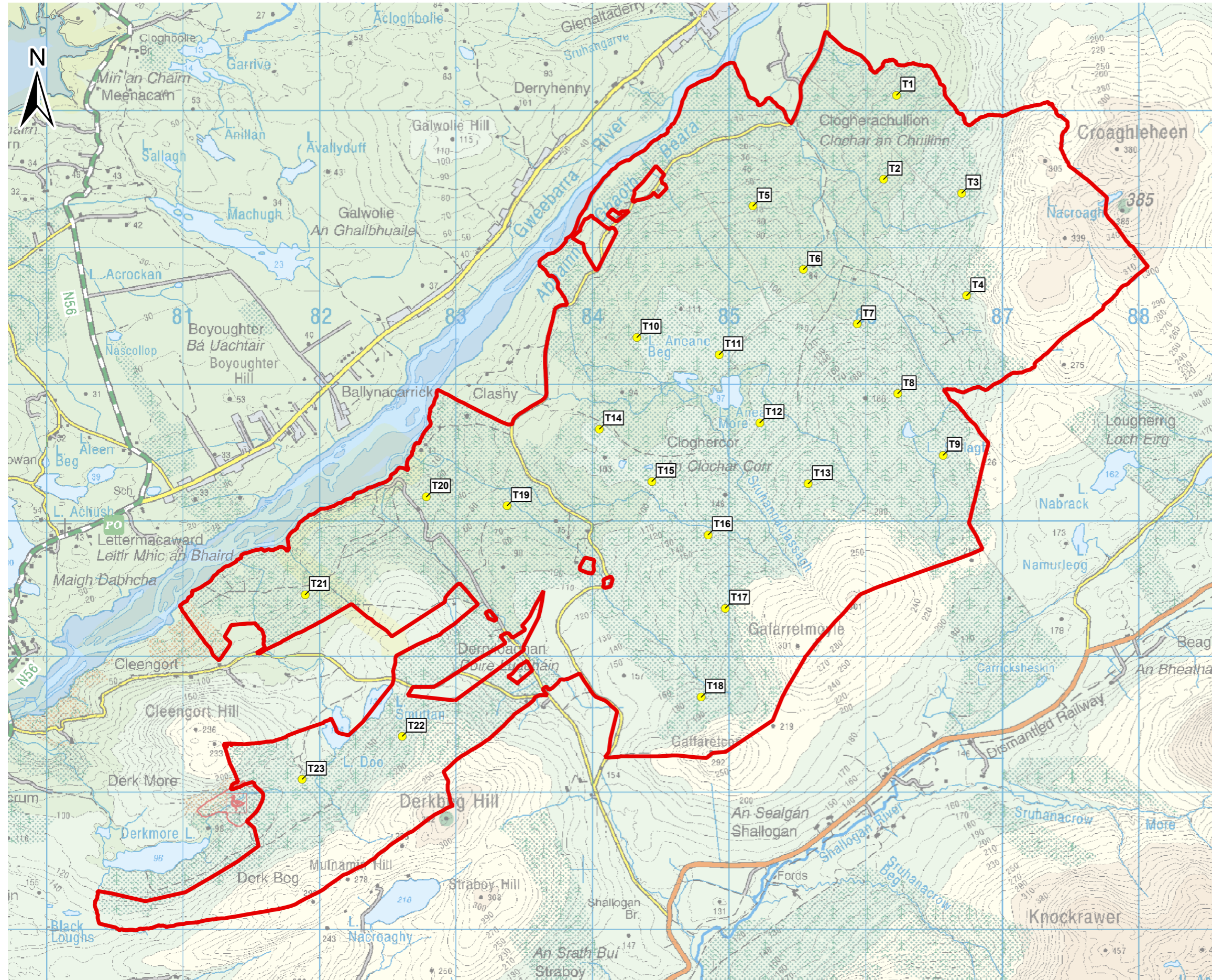
Muna dtig leat teacht ar an taispeántas fhíorúil nó más mian leat an t-ábhar a fheiceáil ar bhealach ar bith eile, déan teagmháil linn agus déanfaidh muid ár seacht ndícheall freastal ar na riachtanais atá agat.

Tá muid ag súil go mór go mbeidh muid ábalta imeachtaí a réachtáil amach anseo a mbeidh daoine ábalta freastal orthu leis na tograí atá againn a chur i láthair is a phlé in am trátha. Más mian leat bualadh linn leis an togra a phlé i gcrúinniú a bheas slán ó thaobh COVID-19 de, déan teagmháil linn.



Feirm Ghaoithe an tSóirn, Contae, Dhún na nGall

**FEIRM GHAOITHE AN CHLOCHAIR CHORR**  
**LEAGAN 1 DEN DEARADH – ÁIT AGUS LEAGAN AMACH**



**AN TEOLAS IS ÚIRE FÁN TIONSCADAL**  
**Ó BHÍ AN NUACHTLITIR DHEIREANACH ANN:**

- Tá measúithe tosaigh curtha i gcrích againn i Láthair Staidéir an Tionscadail. Bunaithe ar a bhfuarthas amach sna measúithe sin, táthar i ndiaidh an Láthair Staidéir a laghdú gur Láthair Intógtha atá ann anois. Déanfar dearadh don leagan amach a shocrú ón láthair sin, suíomhanna tosaigh tuirbíní gaoithe san áireamh. Thig leat amharc ar léarscáil de Leagan 1 den Dearadh ar an leathanach in aice láimhe.
- Beidh imeacht fóiréil taispeántais againn le tuilleadh sonraí a chur ar taispeánt a bhaineann le Leagan 1 den Dearadh chomh maith leis na torthaí ónár staidéir tosaigh. Téigh chuig [www.cloghercorwindfarm.com](http://www.cloghercorwindfarm.com) ón 28 Meitheamh le hamharc ar an ábhar agus le haiseolas a thabhairt.
- Tá an Bord Pleanála i ndiaidh achomharc a fhaomhadh le hairde an chrainn meitéareolaíochta a ardú ar an tsuíomh. Táthar le tús a chur leis an tsíneadh 20m leis an chrann meitéareolaíochta sin i mí Iúil. Déanann crann meitéareolaíochta eolas a thabhairt fá cad é chomh fóirsteanach is atá suíomh fá choinne forbraíocht feirme gaoithe a d'fhéadfadh a bheith ann. Cuirtear tomhasanna mionsonraithe éagsúla ar bun, luas na gaoithe agus treo na gaoithe mar shampla.
- Táthar le tús a chur le monatóireacht ar an Trup Cúlra sna seachtainí atá romhainn. Is é atá i gceist leis sin ná méid áirithe aonaid leis an trup a mhonatóiriú a leagan thart ar an tsuíomh mholta (cosúil leis an cheann sa phictiúr). Fágfaidh an mhonatóireacht sin go mbeidh muid ábalta measúnú láidir a chur le chéile fá thionchar an trup agus na torthaí sin a chur isteach sa phróiseas deartha.



*Leagan samplach den trealamh monatóireachta torainn*

- Tá muid i ndiaidh eitilt LiDAR a dhéanamh thar an tsuíomh atá molta, rud a rinne muid le hairde na foraoiseachta sa cheantar a mheasúnú. Tá sin mar chuidiú don fhoireann atá againn a dhéanann anailís ar an gaoth fán tionchar a bheas ag an fhoraoiseacht ar chomh táirgiúil a bheas an tsuíomh fad a mhairfeas an feirm gaoithe.
- Tá muid ag súil le cruinniú a bheith againn leis an Bhord Pleanála sula gcuireann muid iarratas isteach le fáil amach an dtig Feirm Ghaoithe an Chlocháin Chorr a mheas mar Fhorbairt Bonneagair Straitéisigh. Cuirtear forbairtí bonneagair straitéisigh faoi bhráid an Bhoird Pleanála go díreach le hiad a mheas.



Feirm Ghaoithe an tSóirn, Contae Dhún na nGall



Feirm Ghaoithe Gharraí an Chomair, Contae Luimnigh

“Tá muid ar Leagan 1 den Dearadh fá láthair. Tá dhá chéim eile le bheith ann den dearadh, iad bunaithe ar a bhfaighfear amach ó fhiosruithe eile ar an tsuíomh, agus ar aiseolas ó pháirtithe leasmhara a bhfuil muid an-bhuíoch ar a shon, sula ndéanann muid aighneacht phleanála deiridh.”

### FEIRM GHAOITHE AN CHLOCHAIR CHORR LEAGAN 1 DEN DEARADH

Déantar fiosruithe agus measúnuithe críochnúla ar an tsuíomh leis an eolas a chur ar fáil fá cá háit a mbeidh na turbiní gaoithe molta agus an bonneagar ar fad a bhaineann leo, na cinn seo ar chuid acu:

- Suirbhéireachtaí Éiceolaíochta
- Suirbhéireachtaí Éaneolaíochta
- Fiosruithe Suímh Geoiteicniúla, Hidreolaíochta agus Geolaíochta
- Samhaltú Caocháíola Scáileanna
- Samhaltú Trup
- Samhaltú Seandálaíochta
- Measúnú Tírdhreacha agus Súl
- Samhaltú Acmhainní Gaoithe.

Bunaithe ar a bhfuarthas amach sna measúnuithe sin, táthar i ndiaidh an Láthair Staidéir a laghdú gur Láthair Intógtha atá ann anois. Déanfar dearadh don leagan amach a shocrú ón láthair sin, suíomhanna tosaigh turbiní gaoithe san áireamh. Tá a lán codanna den Láthair Staidéir a bhí ann ar tús atá curtha as an áireamh anois leis an Láthair Intógtha a fháil.

Déantar an Láthair Intógtha a nuashonrú i rith an ama sa phróiseas deartha. Tá muid ar Leagan 1 den Dearadh fá láthair. Tá dhá chéim eile le bheith ann den dearadh, iad bunaithe ar a bhfaighfear amach ó fhiosruithe eile ar an tsuíomh, agus ar aiseolas ó pháirtithe leasmhara a bhfuil muid an-bhuíoch ar a shon, sula ndéanann muid aighneacht phleanála deiridh.

Tá sriantaí éagsúla curtha san áireamh sa Láthair Intógtha, iad seo a leanas ina measc:

- Slánachar ó Limistéir faoi Chosaint Speisialta agus ó na Limistéir Oidhreacht Náisiúnta
- Slánachar 750 méadar ar a laghad ó thithe cónaithe
- Limistéir a sheachaint ina bhfuil fána domhain i gceist leis an talamh
- Slánachar 50 méadar ar a laghad ó shruthchúrsaí
- Limistéir ina bhfuil barraíocht móin dhomhain a sheachaint
- An dearadh is fearr a bhaint amach ó thaobh cén chuma a bheas ann de
- Slánachar ó bhóithre poiblí agus ó línte cumhachta lasnairde
- Slánachar ó ghnéithe seandálaíochta agus oidhreacht cultúrtha, agus a bheith ag teacht leo.

Is dócha go mbeidh céimeanna deartha ann amach anseo leis an Láthair Intógtha a laghdú de réir mar a dhéanfar sriantaí breise a mheas.



Feirm Ghaoithe an Lisín, Contae Thiobraid Árann

### LEAS A THABHAIRT DON PHOBAL

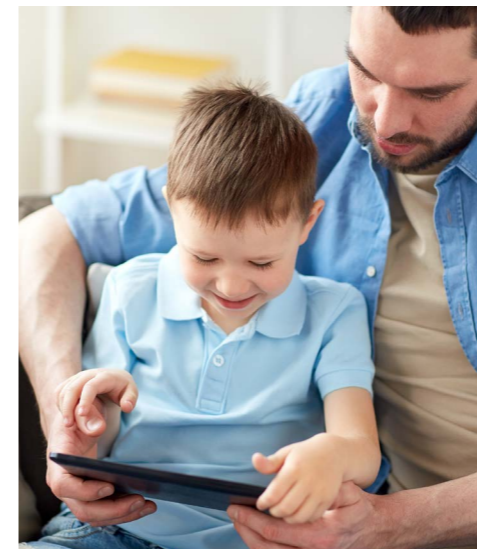
Tá muid tiomanta ó thaobh sochair a thabhairt go háitiúil de agus is mian linn a bheith ag obair leis an phobal atá cóngarach don tsuíomh mholta go dtíg linn a chinntiú go gcuirfidh muid tionscnaimh fhadtéarmacha chun cinn a bheas inbhuanaithe.

I gcomhréir leis an Scéim Tacaíochta don Fhuinneamh In-Athnuaite (RESS) a bhfuil an rialtas ina bun, bhéarfaidh an tionscadal ciste suntasach fadtéarmach chun leasa an phobail i rith na tréimhse nuair a bheas an feirm ghaoithe coimisiúnaithe. Bheadh scéim fá choinne comharsana cóngaracha mar chuid de sin.

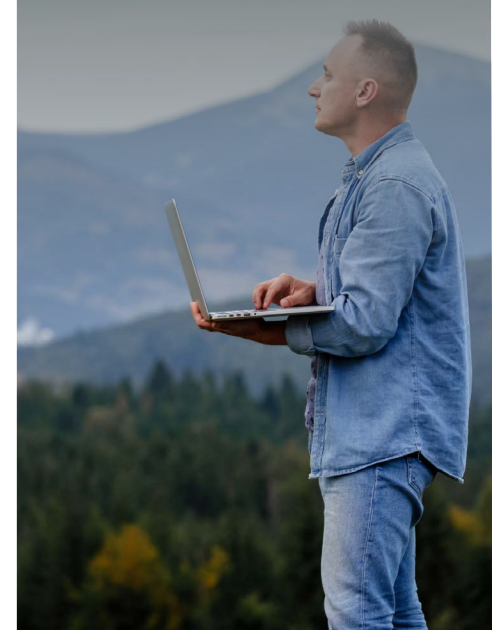
Ba mhaith linn tús a chur leis an phlé leis an phobal fá dtaobh de cad é mar a thioctadh ciste mar sin a threorú chun leasa riachtanais, áiseanna agus sheirbhísí na háite, mar shampla:

- Áiseanna áitiúla caithimh aimsire
- Leathanbhanda agus uasghrádú ar an nascacht
- Tionscnaimh oideachais, scileanna agus fostaíochta
- Seirbhísí áitiúla, hallaí pobail mar shampla, nó urraíocht ar imeachtaí pobail.

Más mian leat labhairt linn faoi na deiseanna atá ann i dtaca le leas an phobail de, déan teagmháil linn – ba bhreá linn cluinstitín uaihbh.



“Ba mhaith linn tús a chur leis an phlé leis an phobal fá dtaobh de cad é mar a thioctadh ciste mar sin a threorú chun leasa riachtanais, áiseanna agus sheirbhísí na háite.”



## AMLÍNE MEASTA AN TIONSCADAIL

Tá muid sna céimeanna iontach luath den fhorbairt ar an tionscadal, agus beidh a lán seansanna ann plé leis an fhoireann agus muid a chur ar an eolas leis an tionscadal a dhearadh de réir mar a théann muid ar aghaidh.

- **Deireadh Fómhair 2019** Cuireadh tús le staidéir éiceolaíochta.
- **Nollaig 2019** Cuireadh staidéir chomhshaoil i gcrích a bhain go sonrach leis an áit a mbeadh crann pleanáilte meitéareolaíochta leis an ghaoth a thomhas.
- **Iúil 2020** Suiteáladh crann meitéareolaíochta tomhaiste gaoithe 80m.
- **Márta/Aibreán 2021** Cuireadh tús leis an chomhairliúchán pobail nuair a cuireadh amach an chéad nuachtlitr don tionscadal.
- **Meitheamh 2021** Cuirfear dearadh agus leagan amach tosaigh na feirme gaoithe i gcrích agus beidh an chéad imeacht, taispeántas fíorúil, ann.
- **Iúil 2021** Déanfar an crann meitéareolaíochta atá suiteáilte ar an tsuíomh a ardú go 100m ar airde.
- **Fómhar 2021** Cuirfear an dara leagan den dearadh i gcrích, agus bainfear leas as staidéir agus aischothú mar eolas fána choinne. Iarrfaidh muid comhairle an phobail don dara leagan den dearadh.
- **Go luath in 2022** Cuirfear an dearadh deireanach don fheirm ghaoithe i gcrích agus bainfear leas as staidéir agus aischothú lena dhéanamh.
- **Samhradh 2022** Táthar ag dréim leis gur seo nuair a chuirfear an t-iarratas pleanála faoi bhráid an údaráis toilithe.

## FOIREANN TIONSCADAIL AN CHLOCHAIR CHORR

Tá taithí leathan ag an fhoireann seo againne ó thaobh forbraíochtaí fuinnimh gaoithe a dhearadh, a thógáil agus a fheidhmiú ar fud na hÉireann. Tá muid ag obair go dlúth le sainchomhairleoirí ar saineolaithe iad sna réimsí greille, pleanáil agus acmhainní gaoithe.



**James Dineen**  
*Bainisteoir Tionscadail, Ørsted*

Is é James Dineen Bainisteoir Tionscadail Ørsted ar thionscadal molta Fheirm Ghaoithe an Chlochair Chorr. Tá cuid mhór taithí ag James i bhforbairt an fhuinnimh in-athnuaite, agus tá níos mó ná deich mbliana caite aige ag obair san earnáil.



**Sean Doherty**  
*Oifigeach Teagmhála Pobail*

Is é Sean Doherty an tOifigeach Teagmhála Pobail ar thionscadal molta fheirm ghaoithe an Chlochair Chorr. Is as Dún na nGall ó dhúchas é Sean, agus tá an-taithí aige mar bhainisteoir foraoiseachta. Bhí baint aige le suíomh foraoise an Chlochair Chorr a phlandú.



**Ciara Conboy**  
*Bainisteoir Tionscadail, Coillte*

Is í Ciara Conboy Bainisteoir Tionscadail Coillte ar thionscadal molta Fheirm Ghaoithe an Chlochair Chorr. Tá Ciara i ndiaidh teacht le gairid go Foireann Athnuaiteán Coillte agus taithí aici ar thionscadail in-athnuaite éagsúla ar fud na tíre.

## DÉAN TEAGMHÁIL LINN

Tá muid tiomanta ó thaobh dlúth-chaidreamh a bheith againn leis na daoine atá ina gcónaí san áit agus leis an phobal. Ba bhreá linn cluinstitín uaibh. Thig libh na sonraí thíos a úsáid le teagmháil a dhéanamh linn roimh an taispeántas fhíorúil, lena linn nó ina dhiaidh:

Ríomhphost: [info@cloghercorwindfarm.com](mailto:info@cloghercorwindfarm.com)

Fón: (021) 422 3677

Post: **Tionscadal Fheirm Ghaoithe an Chlochair Chorr, Urlár 5, Ceathrú na Cathrach, Cé an Lapaigh, Cathair Chorcaí, Éire**

Le tuilleadh eolais a fháil, is féidir dul chuig ár suíomh gréasáin: [www.cloghercorwindfarm.com](http://www.cloghercorwindfarm.com)