

Cloghercor Wind Farm

Community Information Webinar

Welcome

The webinar will begin shortly.

We look forward to answering your questions. Please submit your questions via the Q&A box.



Agenda for this evening's webinar

- Introduction to Ørsted and Coillte
- Need for the project
- Overview of Cloghercor Wind Farm project
- Overview of Environmental Studies
- Community engagement
- Next steps and progressing the project

Project Developers



Ørsted develops, constructs, and operates offshore and onshore wind farms, solar farms, energy storage facilities, and bioenergy plants, and provides energy products to its customers. In Ireland, Ørsted owns and operates a portfolio of onshore wind farms with a combined capacity of more than 300 MW. Our ambition is to increase this by more than 600 MW in the coming decade.



Coillte's Renewable Energy division (Coillte RE) is responsible for developing renewable energy projects on Coillte-owned lands. Coillte RE's ambition is to develop a further 1GW of renewable energy over the next ten years, driving Ireland's ambition to achieve 80% of electricity generation from renewable sources by 2030. Coillte RE has developed and constructed a number of operational projects in recent years, and is continuing to develop renewable energy projects, both in co-development and 100% Coillte-owned.

Coillte RE is in the very late stages of transitioning to a new stand-alone joint venture company, FuturEnergy Ireland, in conjunction with the ESB. Following the transition, Coillte's renewable energy portfolio and team will transfer to the new company.

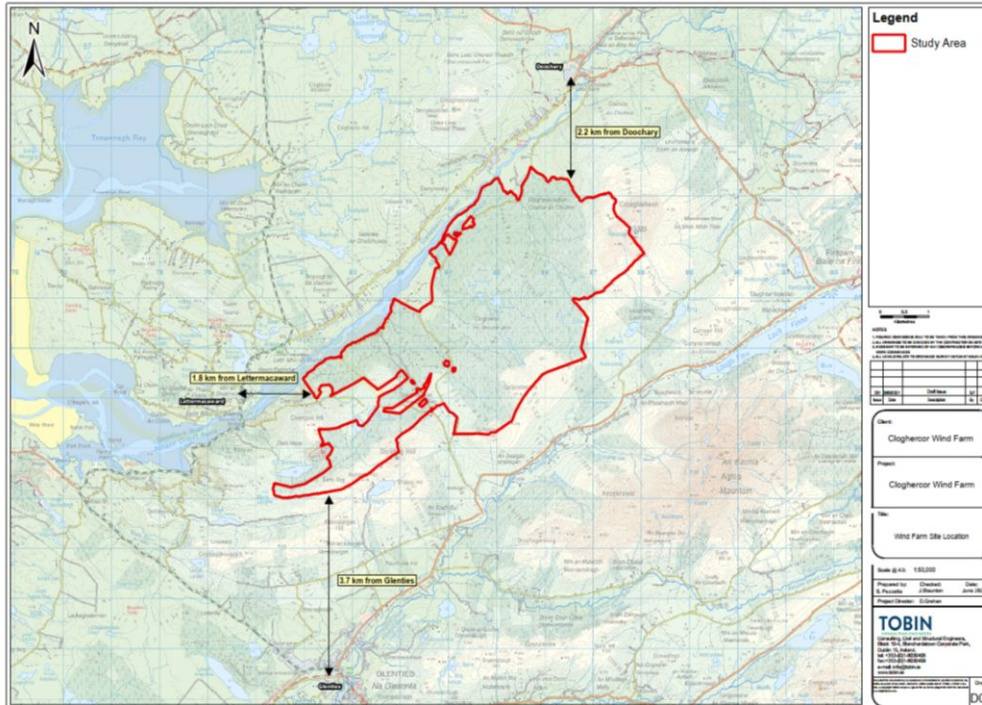


TOBIN is an innovative consultancy firm, covering all sectors of the energy and environment market. We have significant experience and involvement in policy, regulation and standards development, at a national level, and can advise our clients on all stages of a project's lifecycle from project management, development design, assessment, planning and construction through to operation.

TOBIN's Environment & Planning team provide a range of services, from experienced professionals, to our clients, which enable them to move forward with development in accordance with best environmental and engineering practice placing the principle of sustainability to the fore.

Overview of Cloghercor Wind Farm project

Site location and key features



- 2km south of Doochary in north-west County Donegal
- The Clochar an Chuilinn river flows through the site as well as several small watercourses
- All flow into the Gweebarra / Owenwee (Doochary) river adjacent to the site
- Current land cover within the site comprises predominantly of 'Coniferous Forest' with some small areas classified as 'Peat Bogs' or 'Transitional Woodland-Shrub'

The need for the Development

- The impacts of climate change are widely recognised as being one of the greatest global economic, environmental and social challenges facing the world today. Electricity and heat generated by fossil fuels are among the biggest polluters to our atmosphere.
- In 2019, the Oireachtas declared a climate emergency. Via the Government of Ireland's [Climate Action Plan 2021](#), Ireland also has set stretching targets to:
 - Reduce emissions of greenhouse gases by an average of 7% each year from 2021-2030 - a reduction of 51% over the decade
 - Meet 70% (now 80%) of electricity demand from renewables by 2030, with 8 GW of installed onshore wind capacity contributing to this target.
- The proposed Cloghercor Wind Farm aims to:
 - Generate electricity from a renewable source of energy - offsetting the need for combustion of fossil fuels
 - Assist in Ireland's mission to decarbonise our electricity, heat and transport systems
 - Meet local and national energy demand
 - Contribute to the regional and Irish economy for renewables.



Why this site?

- Large area available for development
- Good wind resource at the site
- Set-back from properties can be achieved to align with latest government guidance
- Set back from sensitive ecological areas can also be achieved at this site
- There is a connection to the National Electricity Grid
- There is a network of forest roads within the site that can be utilised for access
- The area is designated as “Open to Consideration” for wind energy in the Donegal Co. Development plan
- Although nearby, the site is **not** located in a Special Area of Conservation (SAC), A Special Protection Area (SPA), or a Natural Heritage Area (NHA)

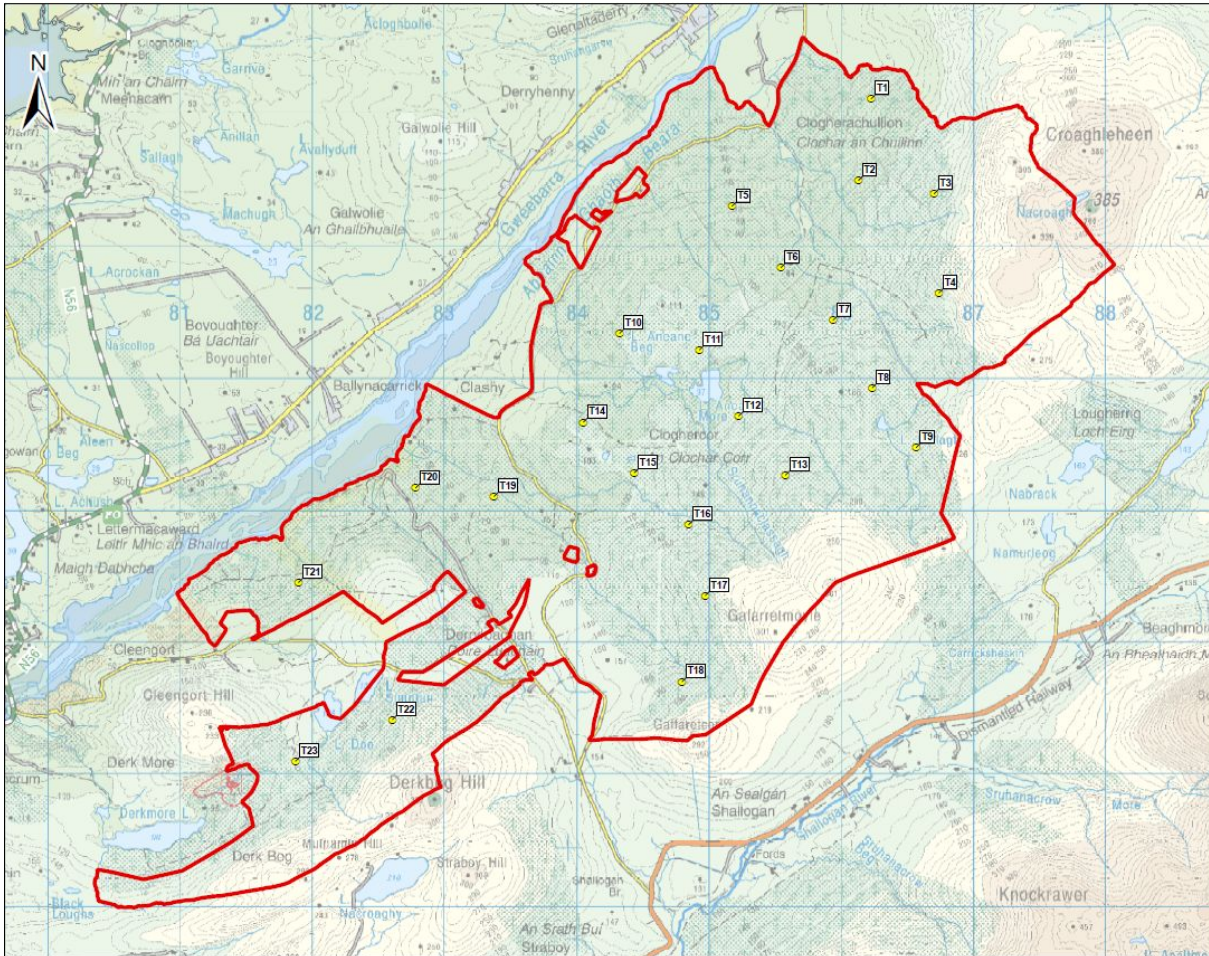
Overview of Cloghercor Wind Farm project



Initial proposal

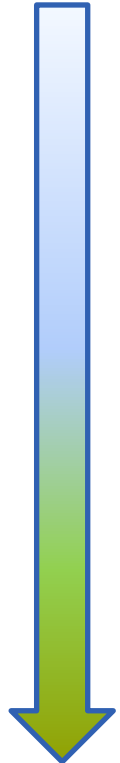
- Having initiated on-site feasibility studies in 2019, our initial proposal for Cloghercor Wind Farm consists of:
 - Up to 23 turbines
 - Maximum 200m tip height
 - Delivering up to 140MW in renewable energy, and a sizeable community benefit package.
- Application in September 2021 to An Bord Pleanála for Cloghercor Wind Farm to be considered as a Strategic Infrastructure Development (SID). SIDs are submitted directly to An Bord Pleanála for determination.
- The full details of the initial proposal, along with findings from our initial feasibility studies, is available to view in our virtual exhibition room on the project website at: www.cloghercorwindfarm.com.



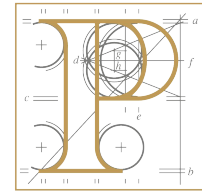


- Initial proposal informed by extensive studies on-site and off-site
- Initial surveys have determined that the site should be suitable for up to 23 turbines
- This has been determined on the basis of key constraints being identified, including International Environmental and landscape designations, set-back from dwelling houses, watercourse, lakes, infrastructure, and archaeological and featured monuments
- Continued surveys will inform wider constraints including sensitive habitats which are not designated, and areas with significant slopes

Strategic Infrastructure Development (SID) Application Process



- Apply to An Bord Pleanála (ABP) to determine if the project qualifies as SID
- Pre-application phase
- Overview of project provided to ABP and consultation with ABP on the project
- ABP determine if the project qualifies as a SID project
- Project applies directly to ABP if approved through this process
- Persons can submit observations on the project as part of the normal



An
Bord
Pleanála

Environmental studies



We have appointed an external consultant, **TOBIN Consulting Engineers**, to carry out the detailed environmental studies that will help to inform the design of the wind farm.



TOBIN's on-site studies include:

- Development constraints including setback distances from properties
- Watercourses
- Archaeological features
- Sensitive ecology and landscape areas
- Ornithological studies
- Mammals
- Bats
- Aquatic Biodiversity
- Landscape and visual impact
- Noise and Shadow Flicker
- Telecommunications links

Engagement with the community



- Ørsted and Coillte are committed to engaging inclusively with the whole community and developing a responsible project that is good for society and our neighbours
- We have made efforts to engage inclusively and in line with Covid-19 restrictions:
 - **April 2021** - Initial introduction of the project to the community via a project newsletter (pictured) which was delivered under Covid-safe protocols
 - **June 2021** – Second project newsletter delivered, outlining updates on first design iteration, ongoing studies, and details of our virtual exhibition room
 - **July 2021** – Virtual exhibition room displaying initial proposal goes live at www.cloghercorwindfarm.com – the virtual exhibition room remains live on our website
 - **November 2021** – Community information webinar held, with residents invited to attend via a postcard invitation, plus adverts in local media outlets
 - **Since the Spring** we have held a number of face-to-face and virtual meetings on request
 - Our website is regularly updated with new information
 - We have appointed two Community Liaison Officers who are based locally and who can engage with the community in English and Irish
- We are eager to hear from you. Reach our project team at:
 - info@cloghercorwindfarm.com



Community Benefit Fund

- As experienced developers, we have worked with communities nearby to our renewable energy projects to deliver sustainable, long-term community initiatives that meet local priorities, needs and objectives.
- In accordance with the government-led Renewable Electricity Support Scheme (RESS), if approved the project will deliver a substantial and long-term community benefit fund throughout the period that Cloghercor Windfarm is commissioned.
- Depending on the final size of the wind farm, this fund could be in excess of €500,000 per year, which will include a near neighbour scheme.
 - The near neighbour scheme will consist of a minimum payment of €1,000/annum to households situated up to 1km from each turbine. It may also include a discretionary payment for households situated up to 2km from the turbines.
- The distribution of the community benefit fund will ultimately be for the community to decide in partnership with the project team. Guidance on the governance of Community benefit funds can be found in the [RESS Good Practice Principles Handbook for Community Benefit Funds](#).
- We would like to work closely with the community to understand how the Fund could support local priorities, such as (but not limited to):
 - Community enterprises based on UN Sustainable Development Goals, e.g. education, energy efficiency, climate action, sustainable energy
 - Recreational amenities
 - Accessibility improvements
 - Local facilities
 - Skills development initiatives
 - Digital connectivity improvements
 - Educational institutes.

Next steps to progress the proposals

Progressing the proposals will be an iterative process. Our indicative timeline is as follows:



Thank you

Please submit your questions through the chat box and we will answer as many questions as possible in the remaining time.

To view our detailed proposals, visit our virtual exhibition room at: www.cloghercorwindfarm.com

If you wish to speak with the team one-to-one, you can contact us at:

info@cloghercorwindfarm.com

(021) 422 3677