



Ballinagree

Wind farm

Community Webinar Presentation
07.10.2021

Outline of Presentation

- Project Overview
- Community Engagement
- Project Benefits
- Next Steps



Ballinagree
Wind farm



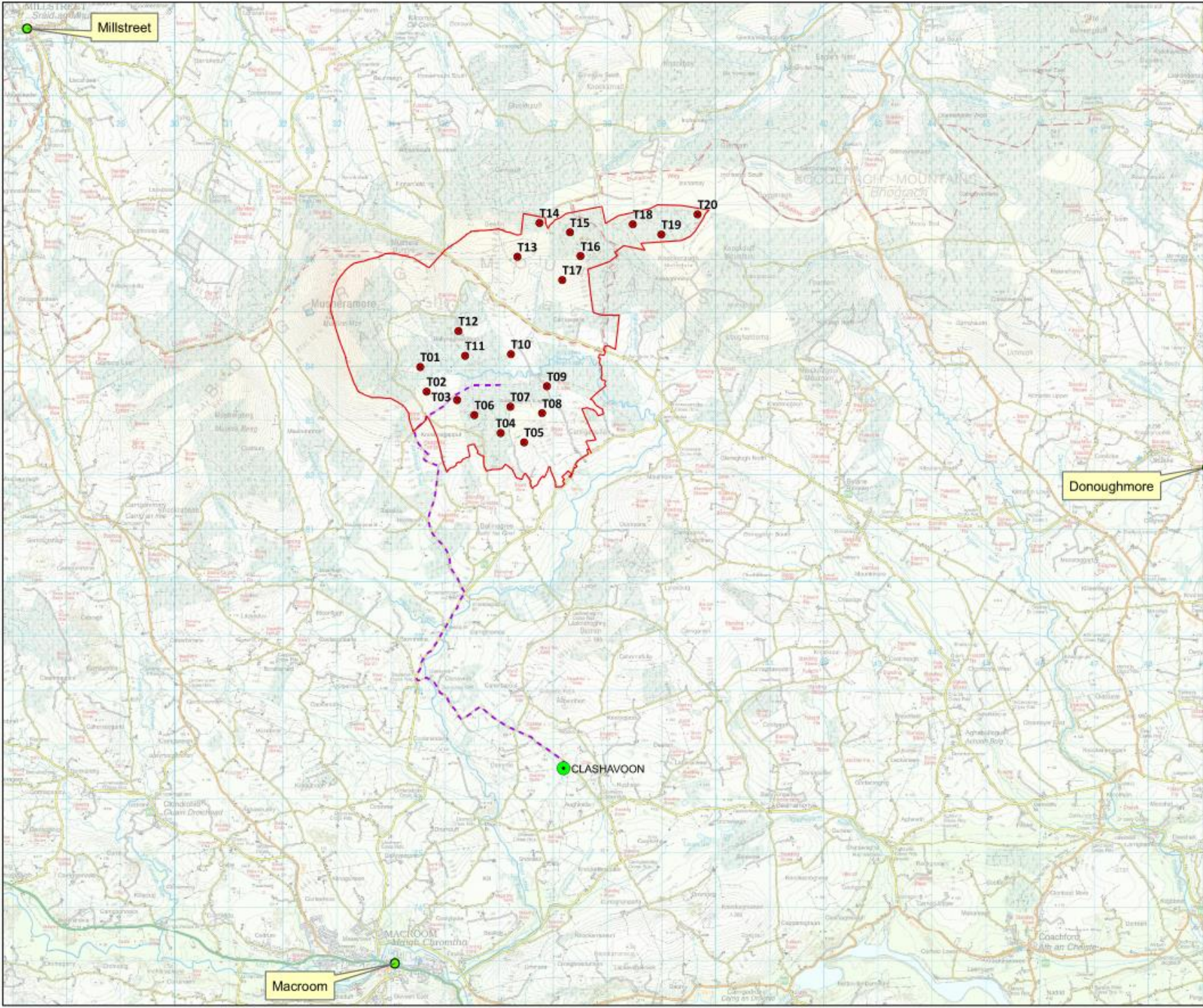
Project Developers



- Coillte Renewable Energy are responsible for harnessing the wind energy above Coillte forests.
- Coillte's ambition is to develop a further 1GW of renewable energy over the next ten years.



- Until recently, Coillte's partner for this project has been Brookfield Renewable Ireland, one of the largest owners and developers of renewable assets in the country.
- In June 2021, Ørsted signed an agreement to acquire Brookfield's Irish renewable platform and pipeline projects, including Ballinagree.



Project Location

- Proposed development Study Area
- Design Iteration 3

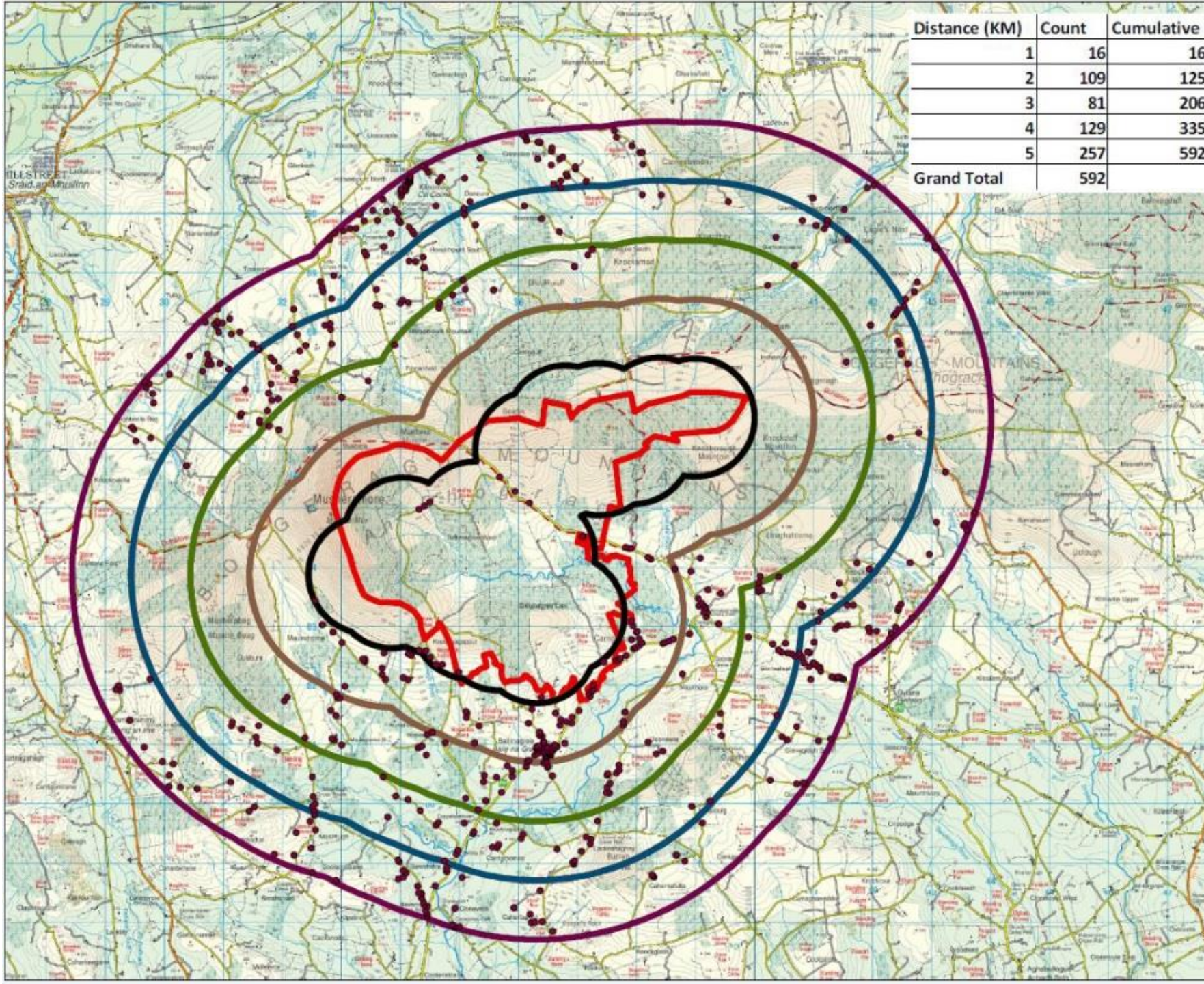
Need for the Development

- Experts warn that if we don't drastically reduce emissions there is a very real danger that we will see temperatures rising well beyond +2C within our children's lifetimes, resulting in **extreme, irreversible climate events** that cause far-reaching, long-lasting damage.
- All parties of the Oireachtas recognise the State's response to climate change has been insufficient. ¹
 - JCCA recommendations in relation to onshore energy focus on community acceptance.
- Climate Action Plan requires increase of ca. **4 GW of onshore wind by 2030**.
- Climate Action Bill
 - **51% reduction in GHG emissions by 2030**
 - Local authority 5-year climate action plan, consistent with government objectives
- The threat from the climate crisis is so severe and imminent that significant deployment of renewable projects both onshore and offshore is urgently needed.

¹ Joint Committee on Climate Action – Climate change: a cross-party consensus for action

Distance (KM)	Count	Cumulative
1	16	16
2	109	125
3	81	206
4	129	335
5	257	592
Grand Total	592	

Distance of Dwellings from Turbines



Legend

● Eircodes < 5km

Buffers (KM)



1



2



3



4



5



Site Boundary

Community Liaison



- Community Liaison Officers (CLOs): John Lyons, David Eves
- Focus areas: 1. Local householders 2. Local Community Groups 3. Wider public
- **Householder engagement** Focus on 3km zone, i.e. ~ 200 households
- **Newsletters and Updates**
- NL1. Summer 2019 Door knocks, call backs, letters left, to reach all households
- NL2. Winter 2019 Hand delivered
- NL3. Summer 2020 via An Post due to Covid restrictions
- September 2020 Hand delivered info letter; questionnaire re Zoom meetings
- NL4. Winter 2020 Hand Delivered
- April 2021 Info update, delivered by 3rd party
- NL5. September 2021 Hand delivered to **5Km area**, over 500 households
- **Community Groups** 20 local community groups kept informed on ongoing basis
- **Councillors and TDs** Updates including newsletters and presentation to Municipal District Council

All issues/concerns raised were responded to by CLOs and/or Project Managers via calls, emails or meetings.

Newsletter example

Detailed information provided in newsletters 3 and 5



The newsletter cover features a large photograph of a wind farm in a rural landscape. The top left corner has a dark grey triangle containing the Ballinagree Wind farm logo. The top right corner has a green triangle with the text 'Ballinagree Wind Farm' in white. At the bottom, there are logos for COILLTE (with the tagline 'GROW TRANSFORM SUSTAIN') and Orsted.



THE CONTEXT

The Government declared in May 2019 that Ireland was in the midst of a climate and biodiversity emergency. The Environmental Protection Agency has stated that mean annual temperatures in Ireland have risen by 0.7°C over the past century and are likely to rise by 1.4°C to 1.8°C by the 2050s and by more than 2°C by the end of the century due to climate change.

Climate change refers to the change in climate that is attributable to human activity arising from the release of greenhouse gases, in particular from the burning of fossil fuels (coal, oil, peat) for transport and electricity generation, and from emissions associated with agriculture.

Renewable energy generation is central to the Government's energy policy. The latest Programme for Government (2020), 'Our Shared Future', presents strong climate governance in rapidly reducing climate change to protect and improve public health and quality of life. The Government is committed to rapid decarbonisation of the energy sector with an aim of providing the necessary actions to deliver national renewable electricity targets. These government ambitions support and encourage the generation of renewable energy from onshore wind sources.

Irish Government policy and legislation on Climate Action has formed a mandate for renewable energy generation going forward in Ireland. Key objectives include:

- A target of net zero greenhouse gas emissions by 2050 (Climate Action and Low Carbon Development Bill 2021).
- Provision for five-yearly carbon budgets, consistent with the emissions reduction pathway to 2030 and 2050 (Climate Action and Low Carbon Development Bill 2021).
- A target for the renewable share of electricity generation of 70% by 2030 (Climate Action Plan 2019).

In 2020, the amount of wind energy installed in Ireland reached 4,235 MW generated by more than 300 wind farms. The Irish Government's 'Project Ireland 2040: National Development Plan 2018-2027' outlines the need for an additional 3,000 MW to 4,500 MW of renewable onshore wind as an investment priority, while the Climate Action Plan (2019) also aims to almost double Ireland's onshore wind energy capacity to 8,200 MW by 2030.

The further development of renewable energy sources is a vital component of Ireland's strategy to tackle climate change and ensure a secure supply for our future energy needs. The proposed Ballinagree Wind Farm project is being proposed, in part, as a response to these challenges and we feel it has the potential to contribute greatly to this global cause.

Why onshore wind?

Wind energy is the largest contributing resource of renewable energy in Ireland. It is both Ireland's largest and cheapest renewable electricity resource. Wind generation accounted for 32% of all electricity generated in Ireland in 2019, avoiding 3.9 million tonnes of CO2 emissions.

Onshore wind energy is a clean fuel source. Unlike conventional power plants that burn combustible fossil fuels such as coal or gas, wind turbines do not produce atmospheric emissions that cause acid rain or greenhouse gases. Wind energy is a free, inexhaustible domestic natural resource, produced in abundance in Ireland. As an operating wind farm occupies a relatively small proportion of an overall site area — approximately a 3% footprint — many other land uses can co-exist such as commercial forestry, farming, recreation and biodiversity management.



Slabh Bawn Wind Farm, Co. Roscommon

Other renewable energy technologies such as offshore wind and solar are also required in order to meet national renewable energy targets. As well as increasing onshore wind-generating capacity to 8.2 GW, the 2019 Climate Action Plan calls for 1.5 GW of grid-scale solar and more than 3.5 GW of offshore renewable energy by 2030.

Why this project?


Identifying a site suitable for a wind farm takes into consideration many different inputs. The suitability of the site for this project can be attributed, in part, to the following characteristics:

- The site is located in an area designated as 'Open to Consideration' for wind energy in the Cork County Development Plan.
- The site is not located within a designated Natura 2000 site. It is not within a Special Area of Conservation (SAC) or a Special Protection Area (SPA), although some of these areas are located nearby.
- The site is in an accessible location for connection to the National Electricity Grid via existing electrical substations in the local area.
- There are good annual average wind speeds in the area.
- Setback distances from houses can be achieved to align with the latest government guidance. The project team has committed to a minimum setback of 750 metres between a dwelling and a proposed turbine location.

4 5

Wider public engagement

- www.Ballinagreewindfarm.ie Virtual Tour opened Sept 2021
- Half Page advertorials in Corkman and Southern Star, Sept 2021
- Full Page advertorial in Lee Valley Outlook, Sept 2021
- This webinar advertised in the Corkman, Southern Star and Lee Valley Outlook, Sept 2021



BALLINAGREE WIND FARM COMMUNITY WEBINAR
Thursday October 7, 2021, at 7pm

You are invited to attend an information webinar on the proposed Ballinagree Wind Farm in Co Cork, a co-development between Coillte Renewable Energy and Ørsted. This is an opportunity to meet the team and ask any questions you might have about the project.

Please email ballinagreewindfarm@coillte.ie before midday on Wednesday October 6 to receive registration details. If you cannot attend, please email or call our Community Liaison Officer on 1890 928740 and we can send you the presentation and arrange a one-to-one meeting with the project manager if so desired.

For more information on the project, visit
www.ballinagreewindfarm.ie

Sales: Des 087 659 3427 or Email: des@outlookmags.com

LEE VALLEY OUTLOOK

Ballinagree Wind Farm prepares to submit planning application

This is a "code red for humanity", warned UN Secretary-General António Guterres after the recent IPCC report revealed the frightening reality of global warming. The evidence is clear: devastating storms, severe flooding, punishing droughts and scorching heatwaves have wreaked havoc around the world in recent months. Climate change can no longer be ignored.

To help tackle global warming, the Government's Climate Action Plan commits the country to generating 70% of electricity from renewable sources by 2030, which requires an additional 4,000MW of onshore wind to be developed. Coillte Renewable Energy and Ørsted's intent is to contribute to Ireland's ambitious renewable energy goals with their co-development project, Ballinagree Wind Farm in Co. Cork.

Coillte, the state-owned forestry business, and Danish renewables company Ørsted, which recently acquired Brookfield's Irish operations, will submit a planning application for the proposed Ballinagree Wind Farm to An Bord Pleanála in late October. The submission comprises 20 wind turbines with a proposed overall blade tip height of up to 185 metres to be constructed on Coillte land and that of local landowners.

This planning application comes after an extensive community engagement programme. Over the past two years, the Ballinagree project team has actively looked for input and feedback from local communities and representatives.

Our aim is to develop a wind farm that benefits the local community as well as the country as a whole. We want Ballinagree to be a well-designed wind farm that marks us as industry leaders in terms of community engagement, project management, construction and operations. Ballinagree Wind Farm has the potential to contribute significantly to reducing Ireland's carbon outputs by generating more than 300MWh (megawatt hours) of clean, green electricity every year.

Ballinagree's dedicated Community Liaison Officers recently distributed the fifth brochure containing a wealth of updated information while the second virtual community consultation is available at ballinagreewindfarm.ie. Webinars will follow in late September to provide an opportunity to meet the team and ask specific questions within Covid guidelines.

If the planning application is successful and the project enters the construction phase, a substantial Community Benefit Fund will be available. This consists of a Near Neighbour Fund and a wider community fund that provides direct local project funding.

Based on the Government's Renewable Electricity Support Scheme (RESS), if the project is approved and constructed as proposed, Ballinagree Wind Farm could contribute more than €600,000 per annum to the Community Benefit Fund for the first 15 years (based on RESS mandated amount of €2/MWh). The developers also commit to more than €300,000 a year in funds for the remainder of its operational life (based on a contribution of €1/MWh).

Participation in the RESS scheme obliges developers to establish a Community Benefit Fund where communities are placed at the heart of the decision-making process. Full details on the recently published 'Good Practice Handbook for RESS Community Benefit Funds' can be found at www.gov.ie.

There are other benefits on a local level, including landowner payments and local authority rate contributions, as well as local services required mainly during the construction stage. The wind farm site itself would also have access tracks and existing forestry paths upgraded to recreational amenity trails for community use. This includes the installation of signs and information boards, a car park and picnic area.

There's the bigger picture, too. This project could deliver sufficient electricity to power the equivalent of more than 70,000 homes, improving Ireland's energy security while avoiding approximately 110,000 tonnes of CO2 emissions every year.

When An Bord Pleanála has received the submission, the full planning application, complete with all relevant submitted documentation and diagrams, will be available at ballinagreeplanning.ie.

For more, see ballinagreewindfarm.ie

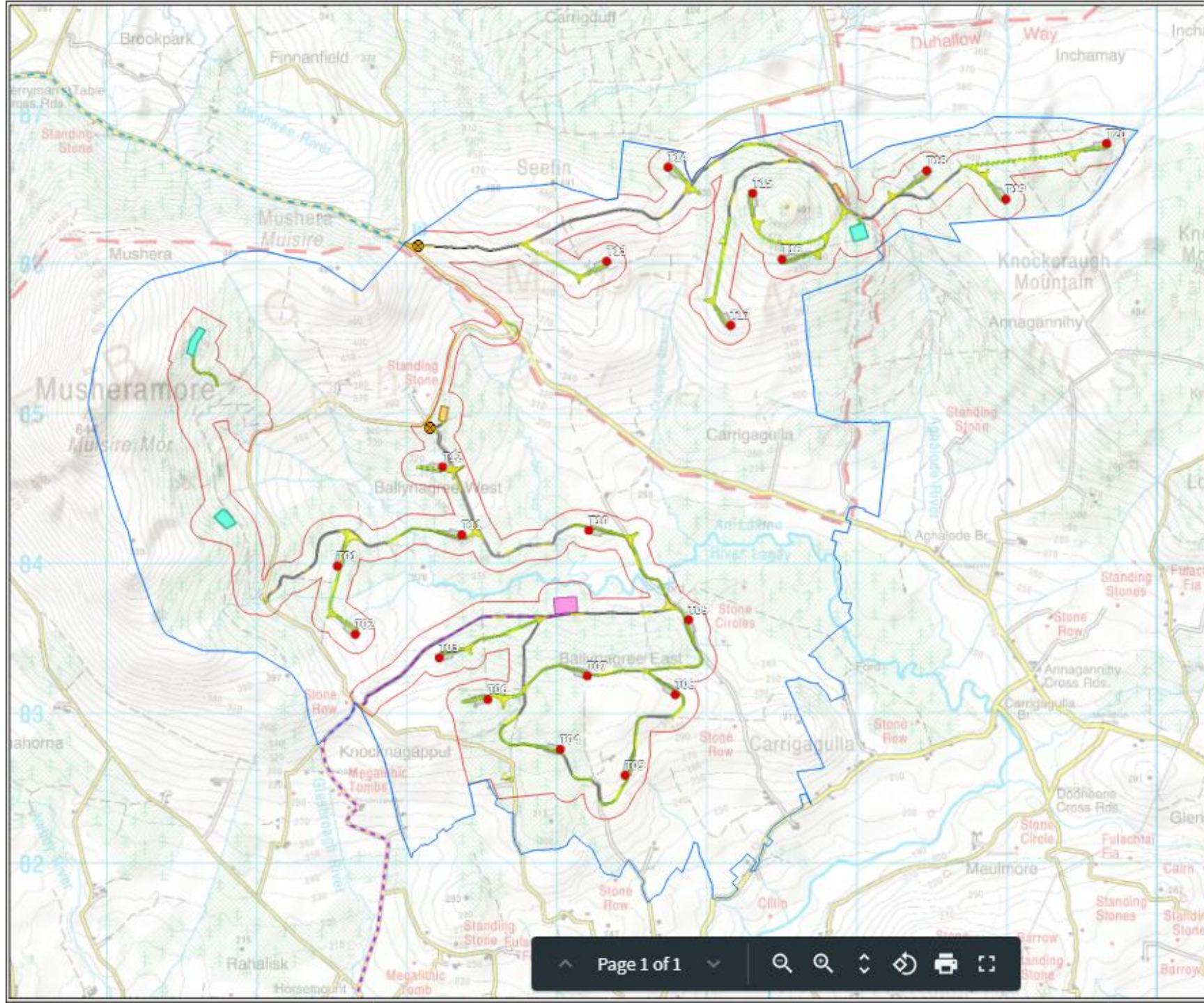




Ballinagree
Wind farm

Advertorial

Project Overview



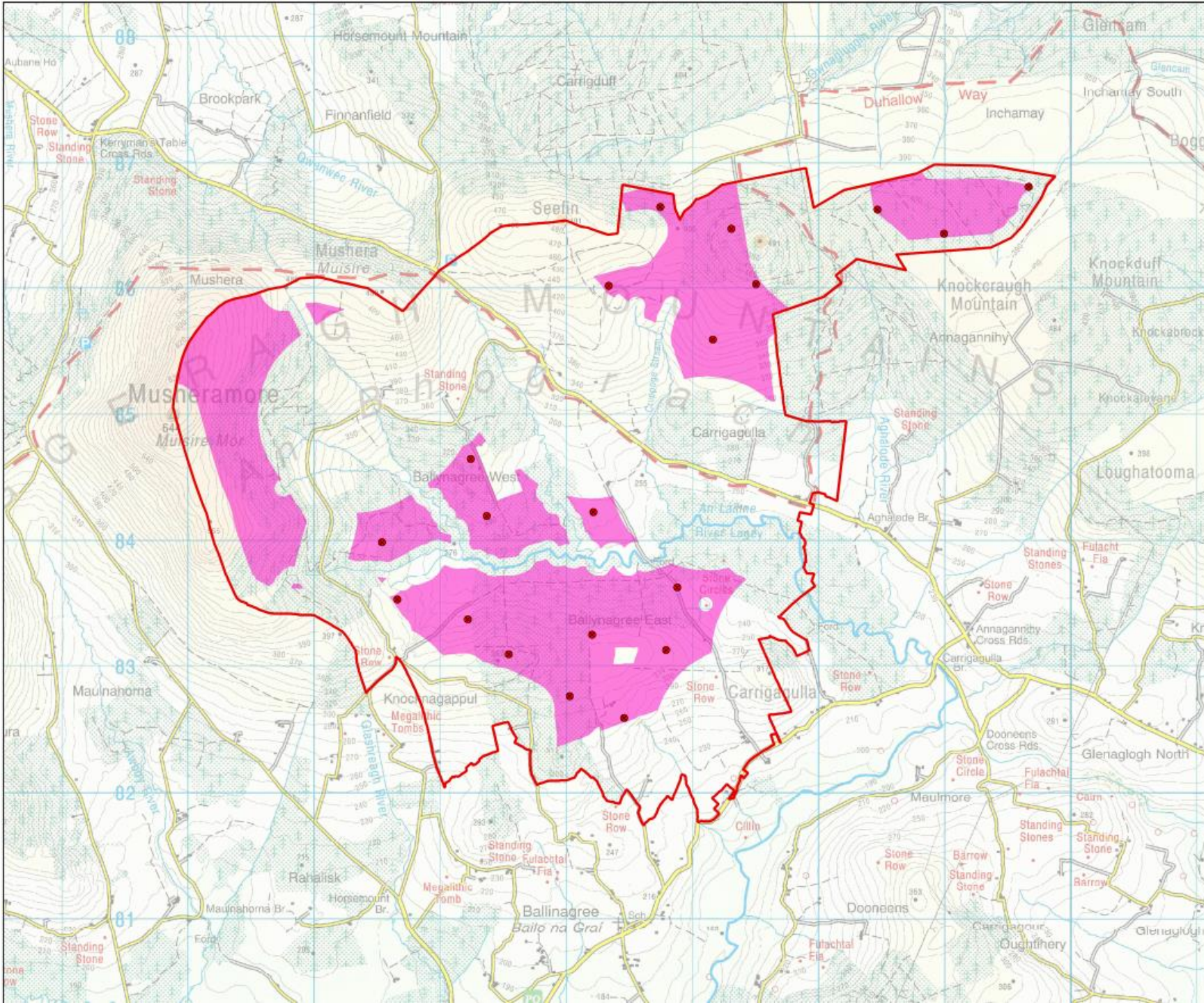
Project Overview

- Strategic Infrastructure Development (SID) project
- 20 turbines
- Hub height up to 110m; tip height up to 185m
- Access tracks, hard standings, internal cables
- 110 kV onsite substation and underground export cable to Clashavoon
- Forestry felling and offsite replanting
- Recreation proposal
- Community Benefit Fund




Design Development

- Review of sites on national scale
 - Large sites, suitable designation in County Development Plan, potential grid connection, outside designated environmental sites (SAC/SPA), good wind resource, suitable terrain
- Original search area consisting of Coillte and Third Party lands
- Reduced search area based on surveys and assessments that considered
 - Wind Energy Development Guidelines, community engagement, setback from dwellings (> 800m achieved), visual impacts, noise, ecology, archaeology, soil stability, hydrology

Design Development: Developable Area



Legend

-  Proposed Wind Farm Site Study Area Boundary
-  Developable Area
-  Proposed Turbine Layout

Project Benefits

- **Significant Community Benefit Fund** – based on recent department publication Ballinagree Wind Farm could provide an estimate € 600,000 Community Benefit Fund per annum for first 15 years, € 300,000 in following years.
- Project will potentially **produce 118 - 132 MW** which is a significant contribution to national targets.
- Estimated annual rates to Cork County Council ca. **€800,000/annum**.
- Sufficient electricity to power over **70,000 homes**.
- Avoided emissions > **110,000 tonnes CO₂ per annum**, > 4 million tonnes in 35 years.
- Recreation and biodiversity initiatives.

Community Benefit Fund

- Renewable Electricity Support Scheme projects are required to establish a Community Benefit Fund for the local community. The fund must remain in place for the duration of RESS which is 15 years.
- Government guidance on how the fund is to be used;
 - Near neighbour payments, min € 1,000/annum up to 1 km, discretionary up to 2km
 - Max 40% to community enterprises based on UN Sustainable Development Goals eg education, energy efficiency, climate action, sustainable energy
 - Max 10% administration costs
 - Balance of fund split between community clubs, societies, local entities & neighbours in 1-2km band

<https://www.gov.ie/en/publication/5f12f-community-projects-and-benefit-funds-ress/>

- Communities decide where the fund is used. Once construction begins, a local Community Fund Committee will be established with the assistance of an independent administrator.

Next Steps

- Finalise planning application documents
- Planning application (Strategic Infrastructure Development)
 - Target submission date: end November 2021
 - Site notices and advertised in local and national papers
 - All planning documents available on dedicated planning website
 - Public will have at least six weeks to submit observations

Thank You

We would be delighted to answer any questions you may have



Phone: 1890 928740

Email: ballinagreewindfarm@coillte.ie

www.ballinagreewindfarm.ie