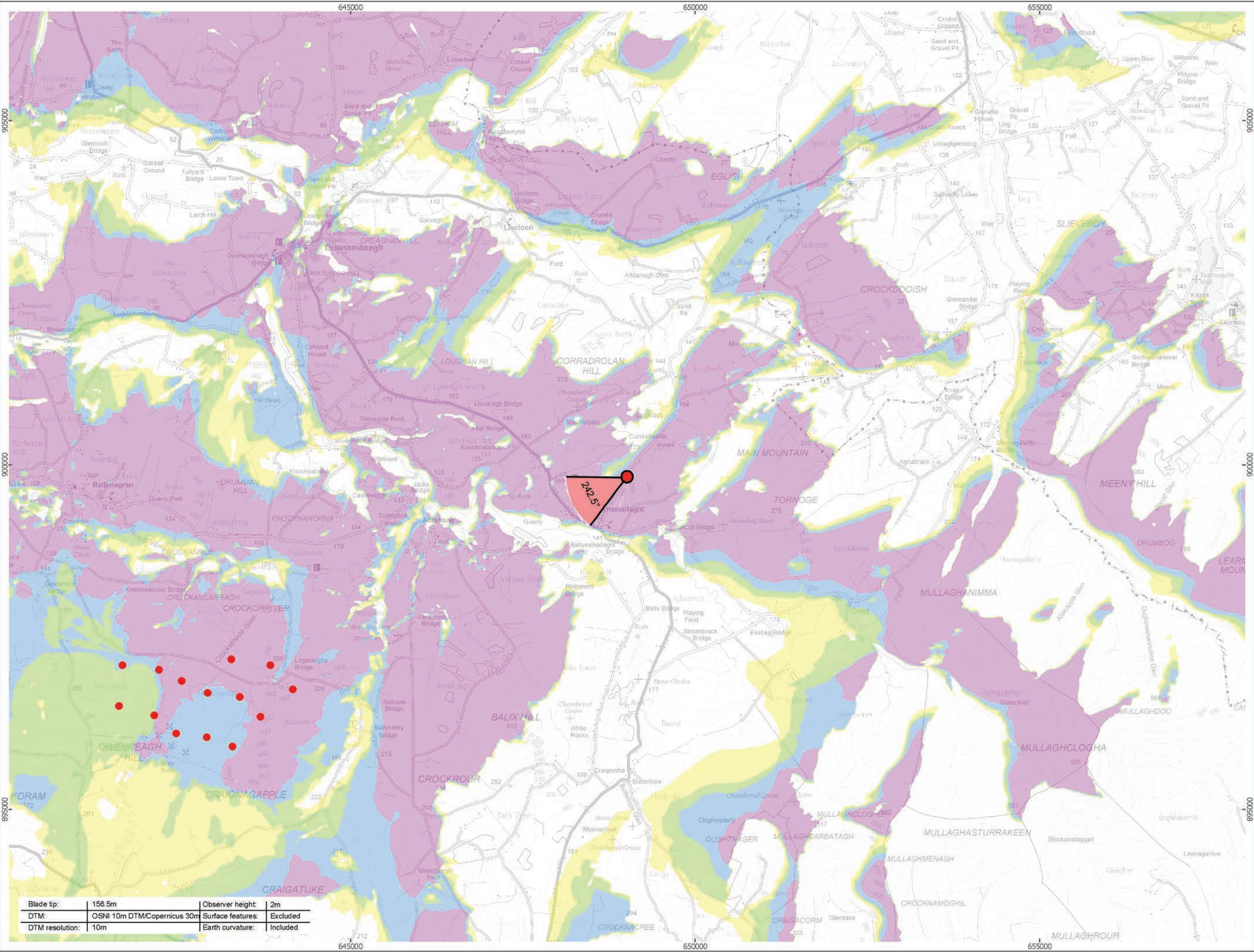


Viewpoint Location Plan Baseline Panorama (90 Degree View)  
Scale: 1:200,000



Viewpoint Location Plan (53.5 Degree View)  
Scale: 1:50,000

open

optimised environments

PART OF SLR

90 Degree Field of View

53.5 Degree Field of View

No. of Blade Tips Theoretically Visible

1 - 4

5 - 8

9 - 12

13 - 14

Proposed Wind Turbine

10km Radii

30km Study Area

NI/RoI Boundary Line

DONEGAL

FERMANAGH

LONDONDERRY

TYRONE

Cumulative Wind Farm Status:

Operational

Under Construction

Consented

Appeal; Application

1:50,000

Scale @ A3

0

0.5

1

2 Km

NORTH

Produced By: RH

Ref:

Checked By: JP

Date: 22/03/2023

Viewpoint Plan

Figure 6.47a

VP22 - Aghafad Road

Owenreagh / Craignagapple

Wind Farm

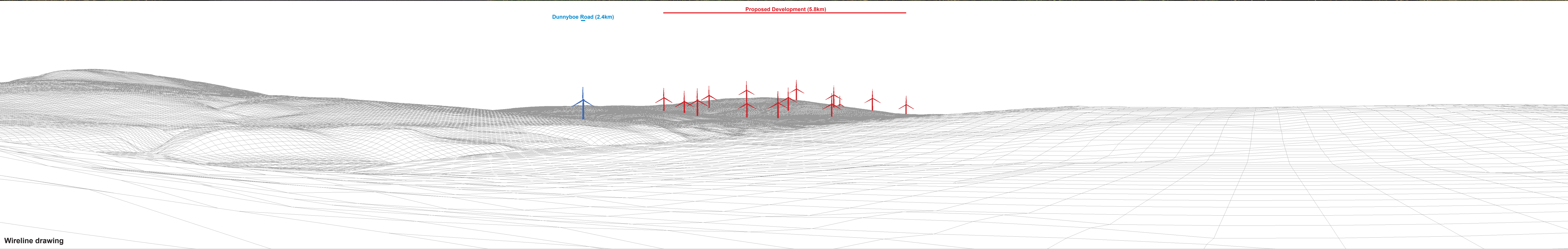
Environmental Statement

P:\2021\211591\_OwenVIA\GIS\211591\_OWEN\ES\211591\_OWEN\_ES\_Fig6-26\_to\_Fig6-50\_VP\_Plans.mxd



Baseline photograph

This image provides landscape and visual context only



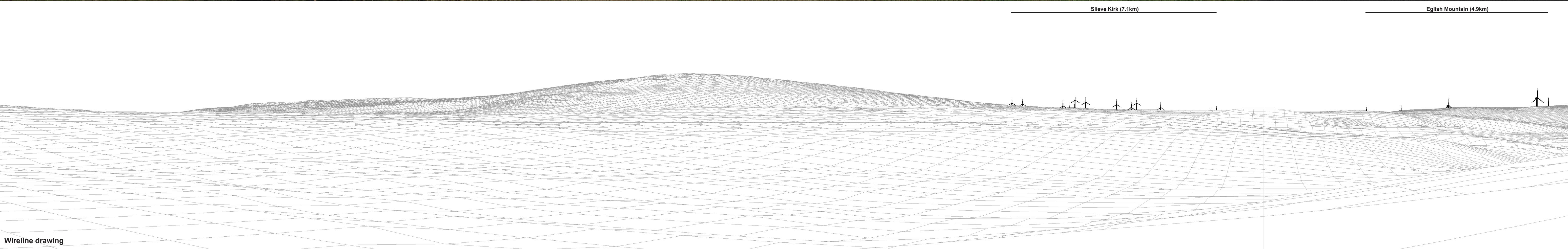
Wireline drawing

OS reference:	249070 E 399844 N	Horizontal field of view:	90° (cylindrical projection)	Camera:	Canon EOS 5D Mark II	Figure 6.47b
Eye level:	181.1 mAO	Principal distance:	522 mm	Lens:	EF50mm f/1.4 USM	Viewpoint 22: Aghafad Road
Direction of view:	242.5°	Paper size:	841 x 297 mm (half A1)	Camera height:	1.5 m	Owenreagh/Craignagapple Wind Farm
Nearest turbine:	5.75 km	Correct printed image size:	820 x 130 mm	Date and time:	10/08/2022 09:51	Contains information from the European Union Copernicus Project. ©Copernicus 2023 ©Ordnance Survey Northern Ireland 2023, licensed under the Open Government Licence v3.0.



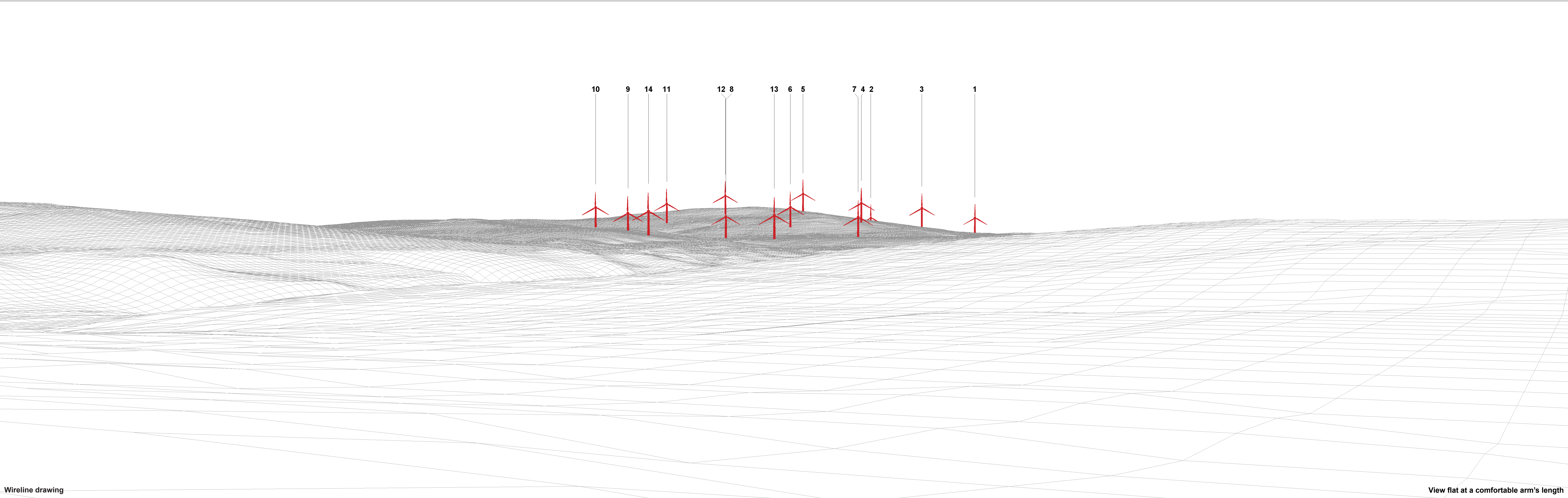
Baseline photograph

This image provides landscape and visual context only



Wireline drawing

OS reference:	249070 E 399844 N	Horizontal field of view:	90° (cylindrical projection)	Camera:	Canon EOS 5D Mark II	Figure 6.47c
Eye level:	181.1 mAOD	Principal distance:	522 mm	Lens:	EF50mm f/1.4 USM	Viewpoint 22: Aghafad Road
Direction of view:	332.5°	Paper size:	841 x 297 mm (half A1)	Camera height:	1.5 m	Owenreagh/Craignagapple Wind Farm
Nearest turbine:	5.75 km	Correct printed image size:	820 x 130 mm	Date and time:	10/08/2022 09:51	Contains information from the European Union Copernicus Project. ©Copernicus 2023 ©Ordnance Survey Northern Ireland 2023, licensed under the Open Government Licence v3.0.



Wireline drawing

View flat at a comfortable arm's length



Photomontage: Proposed Development

View flat at a comfortable arm's length

OS reference:	249070 E 399844 N	Horizontal field of view:	53.5° (planar projection)	Camera:	Canon EOS 5D Mark II	Figure 6.47e
Eye level:	181.1 mAOD	Principal distance:	812.5 mm	Lens:	EF50mm f/1.4 USM	Viewpoint 22: Aghafad Road
Direction of view:	242.5°	Paper size:	841 x 297 mm (half A1)	Camera height:	1.5 m	Owenreagh/Craignagapple Wind Farm
Nearest turbine:	5.75 km	Correct printed image size:	820 x 260 mm	Date and time:	10/08/2022 09:51	Contains information from the European Union Copernicus Project. ©Copernicus 2023 ©Ordnance Survey Northern Ireland 2023, licensed under the Open Government Licence v3.0.



Photomontage: Proposed Development Lighting Assesment : 200cd lighting intensity

View flat at a comfortable arm's length

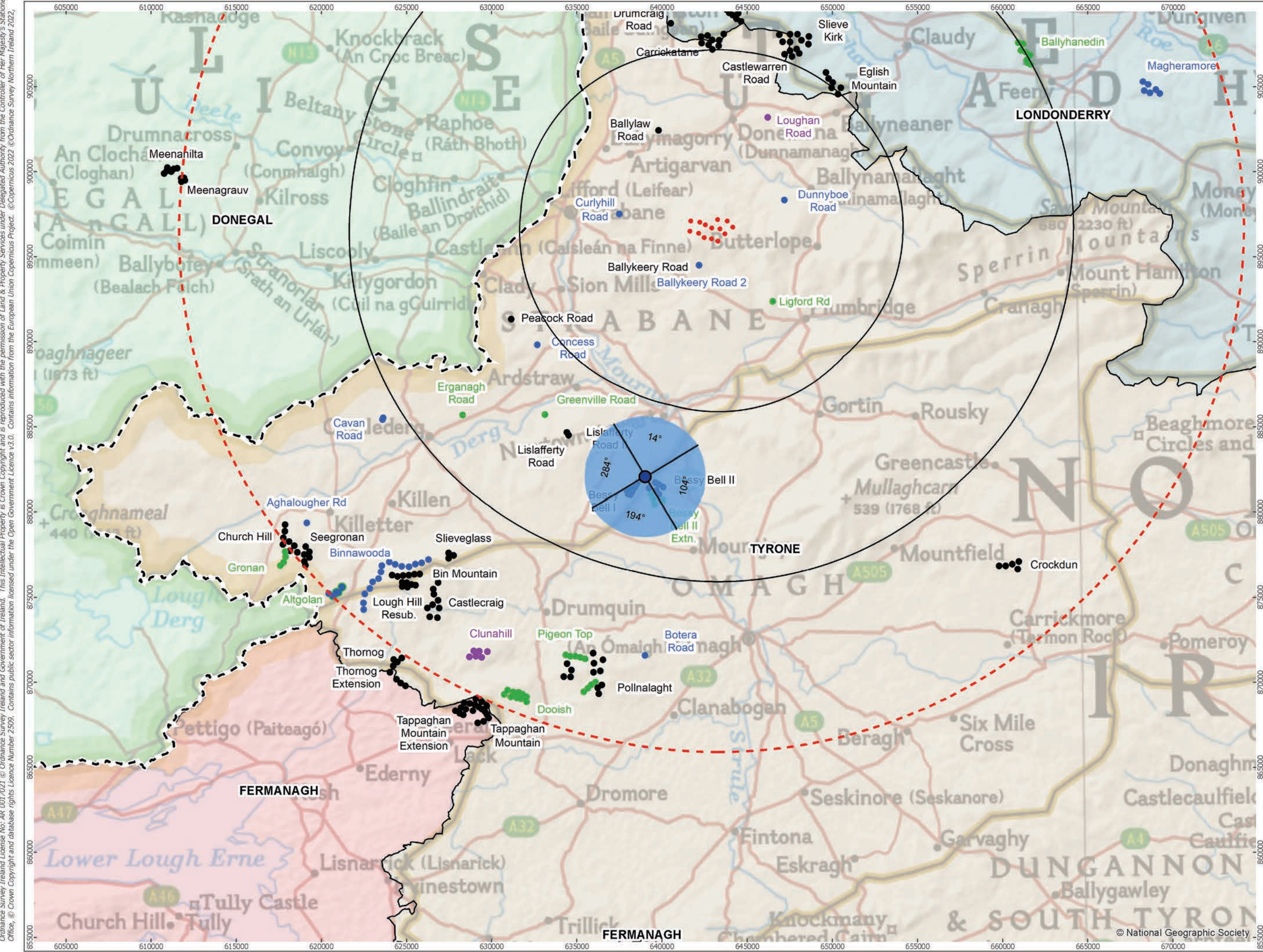
OS reference:	249070 E 399844 N	Horizontal field of view:	53.5° (planar projection)	Camera:	Canon EOS 5D Mark II	Figure 6.47f
Eye level:	181.1 mAOD	Principal distance:	812.5 mm	Lens:	EF50mm f/1.4 USM	Viewpoint 22: Aghafad Road
Direction of view:	242.5°	Paper size:	841 x 297 mm (half A1)	Camera height:	1.5 m	Owenreagh/Craignagapple Wind Farm
Nearest turbine:	5.75 km	Correct printed image size:	820 x 260 mm	Date and time:	10/08/2022 09:51	Contains information from the European Union Copernicus Project. ©Copernicus 2023 ©Ordnance Survey Northern Ireland 2023, licensed under the Open Government Licence v3.0.



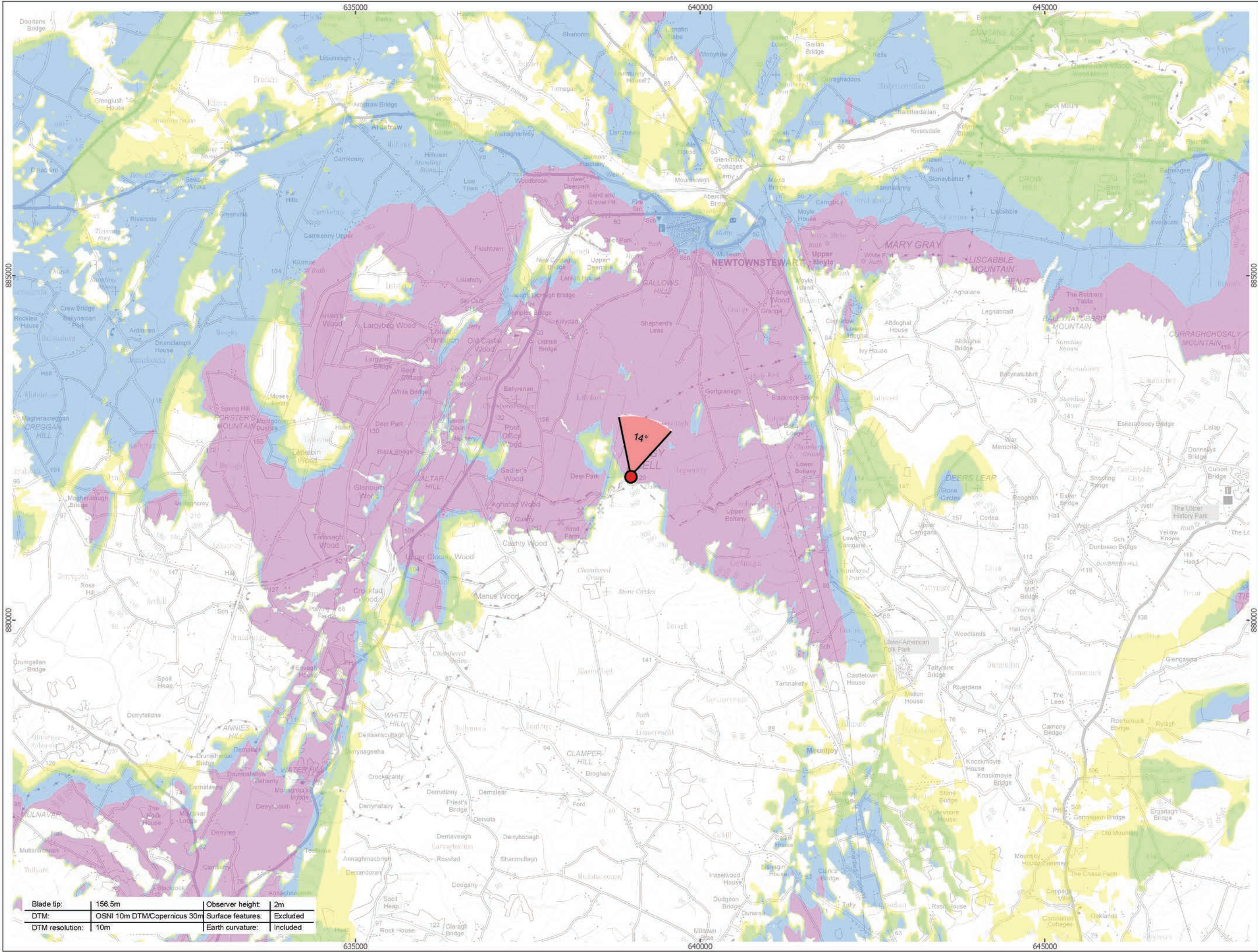
Photomontage: Proposed Development Lighting Assesment : 2000cd lighting intensity

View flat at a comfortable arm's length

OS reference:	249070 E 399844 N	Horizontal field of view:	53.5° (planar projection)	Camera:	Canon EOS 5D Mark II	Figure 6.47g
Eye level:	181.1 mAOD	Principal distance:	812.5 mm	Lens:	EF50mm f/1.4 USM	Viewpoint 22: Aghafad Road
Direction of view:	242.5°	Paper size:	841 x 297 mm (half A1)	Camera height:	1.5 m	Owenreagh/Craignagapple Wind Farm
Nearest turbine:	5.75 km	Correct printed image size:	820 x 260 mm	Date and time:	10/08/2022 09:51	Contains information from the European Union Copernicus Project. ©Copernicus 2023 ©Ordnance Survey Northern Ireland 2023, licensed under the Open Government Licence v3.0.



Viewpoint Location Plan Baseline Panorama (90 Degree View)  
Scale: 1:200,000



Viewpoint Location Plan (53.5 Degree View)  
Scale: 1:50,000

open

optimised environments

PART OF SLR

Orsted

ERM

90 Degree Field of View

53.5 Degree Field of View

No. of Blade Tips Theoretically Visible

1 - 4

5 - 8

9 - 12

13 - 14

Proposed Wind Turbine

10km Radii

30km Study Area

NI/RoI Boundary Line

DONEGAL

FERMANAGH

LONDONDERRY

TYRONE

Cumulative Wind Farm Status:

Operational

Under Construction

Consented

Appeal; Application

1:50,000

Scale @ A3

0 0.5 1 2 Km

NORTH

Produced By: RH

Ref:

Checked By: JP

Date: 22/03/2023

Viewpoint Plan

Figure 6.48a

VP23 - Bessy Bell

Owenreagh / Craignagapple

Wind Farm

Environmental Statement

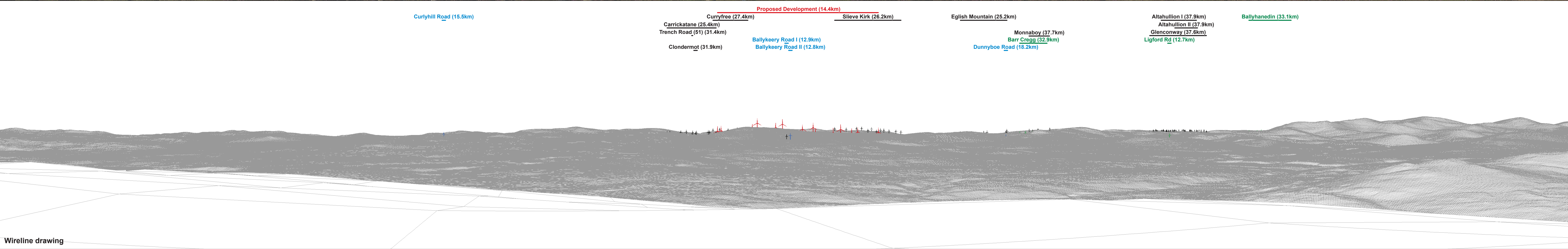
Ordnance Survey New Ireland License No. AR 001/2021 © Ordnance Survey Ireland and Government of Ireland. This Intellectual Property Services under the permission of Land & Property Services under the permission of the Controller of Her Majesty's Stationery Office, © Crown Copyright and database rights Licence Number 2509. Contains public sector information licensed under the Open Government Licence v3.0. Contains information from the European Union Copernicus Project. © Copernicus 2022 © Ordnance Survey Northern Ireland 2022.

P:\2021\211591\_Owenreagh\GIS\211591\_OWEN\ES\211591\_OWEN\_ES\_Fig6-26\_to\_Fig6-50\_VP\_Plans.mxd



Baseline photograph

This image provides landscape and visual context only

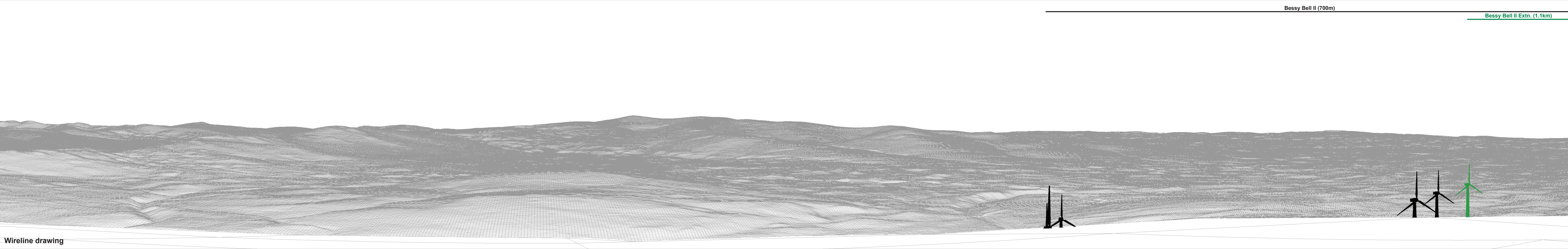


Wireline drawing



Baseline photograph

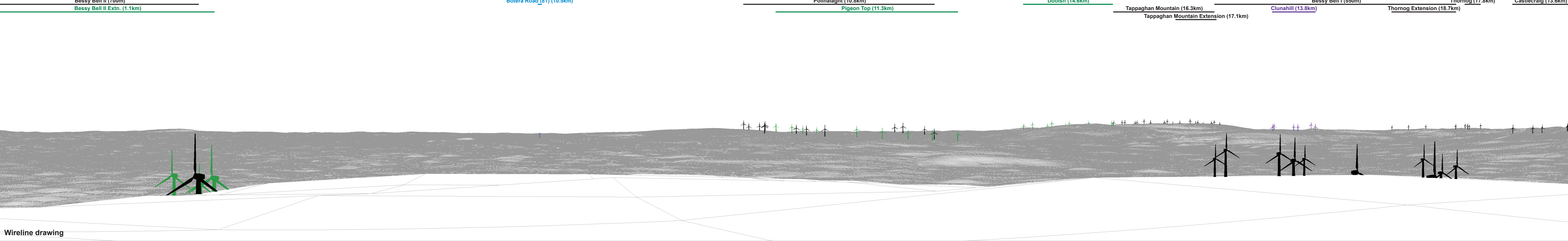
This image provides landscape and visual context only



Wireline drawing



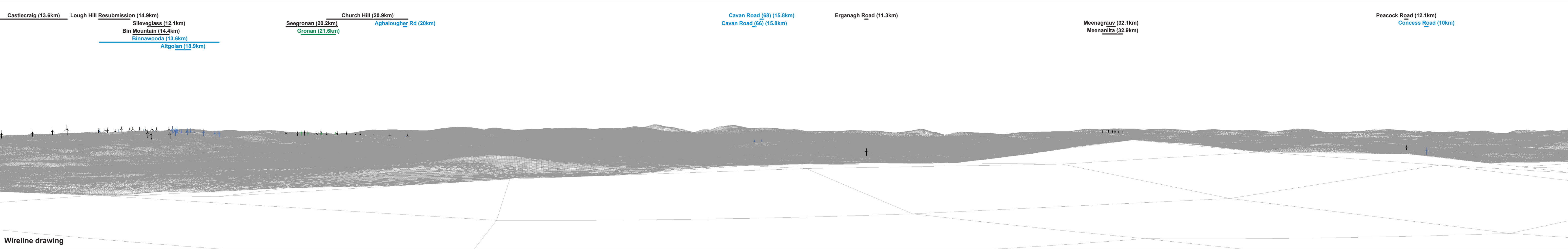
Baseline photograph This image provides landscape and visual context only





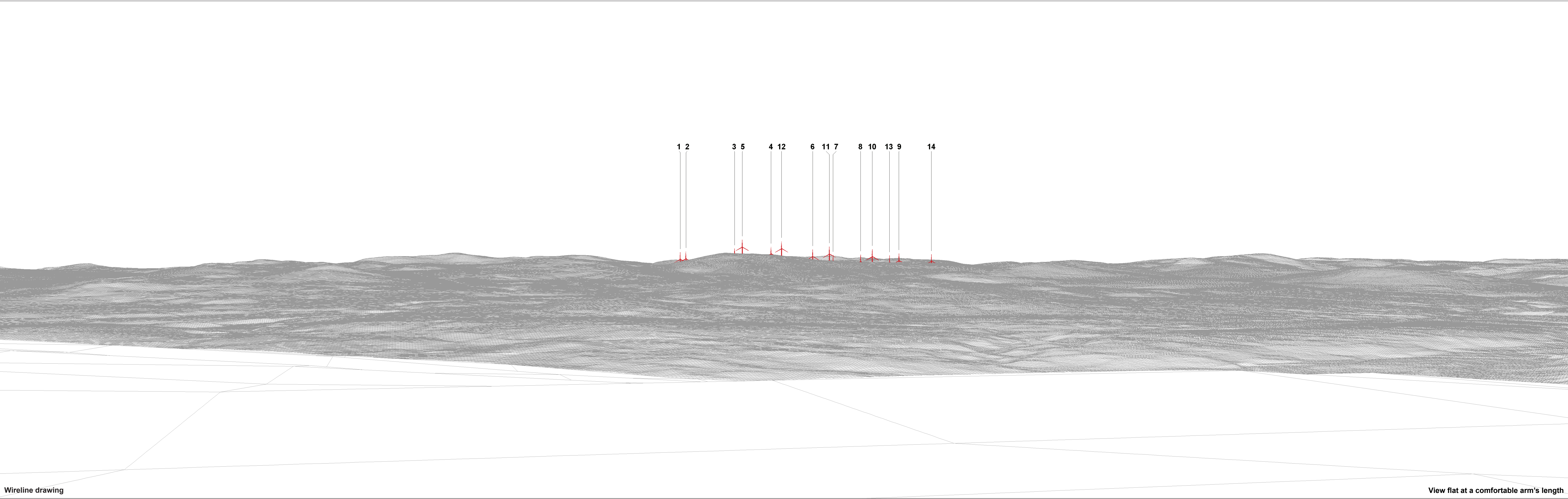
Baseline photograph

This image provides landscape and visual context only



Wireline drawing

OS reference:	239053 E 382091 N	Horizontal field of view:	90° (cylindrical projection)	Camera:	Canon EOS 5D Mark II	Figure 6.48e
Eye level:	420.5 mAOD	Principal distance:	522 mm	Lens:	EF50mm f/1.4 USM	Viewpoint 23: Bessy Bell
Direction of view:	284°	Paper size:	841 x 297 mm (half A1)	Camera height:	1.5 m	Owenreagh/Craignagapple Wind Farm
Nearest turbine:	14.45 km	Correct printed image size:	820 x 130 mm	Date and time:	10/08/2022 15:58	Contains information from the European Union Copernicus Project. ©Copernicus 2023 ©Ordnance Survey Northern Ireland 2023, licensed under the Open Government Licence v3.0.



Wireline drawing

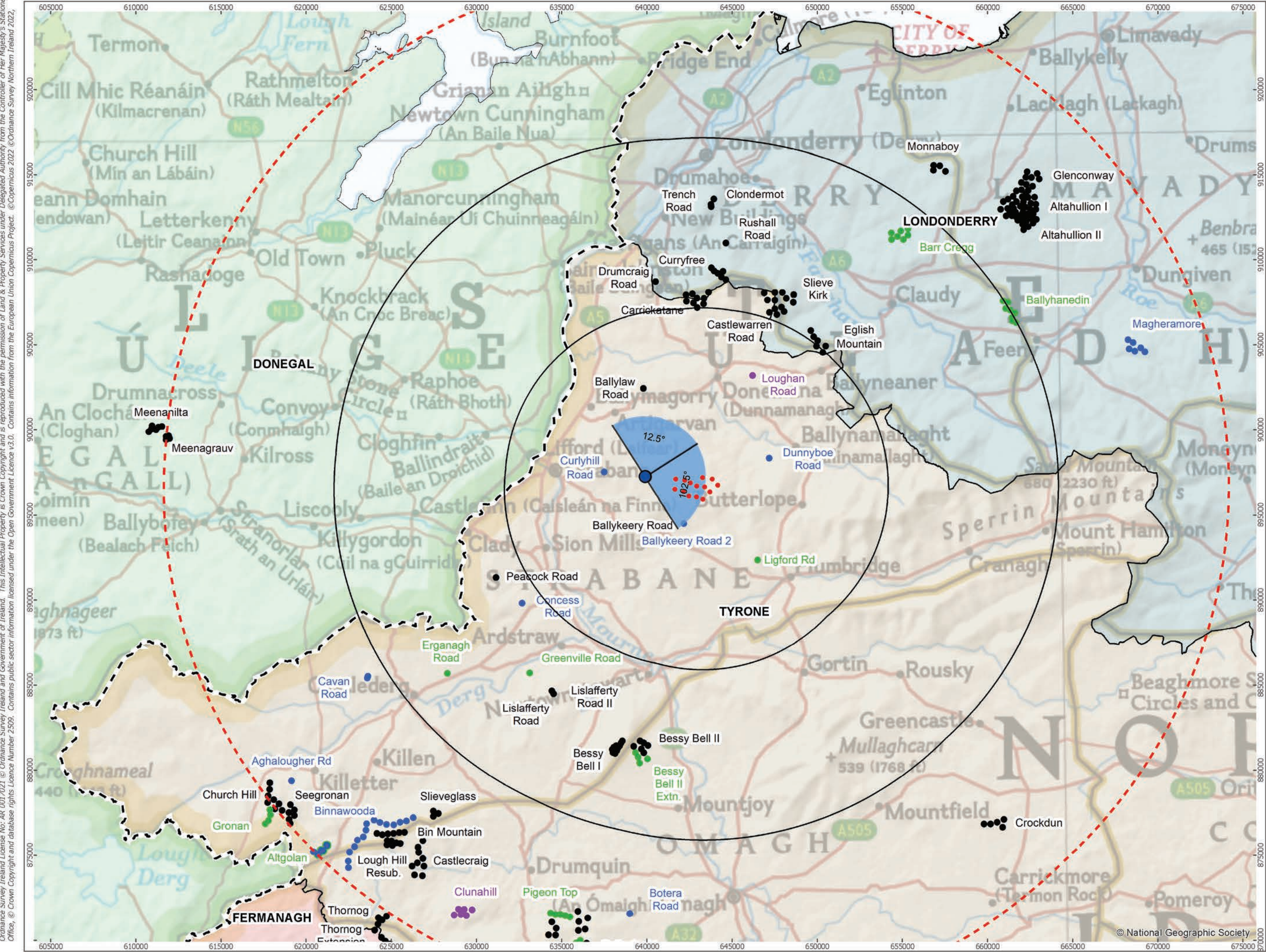
View flat at a comfortable arm's length



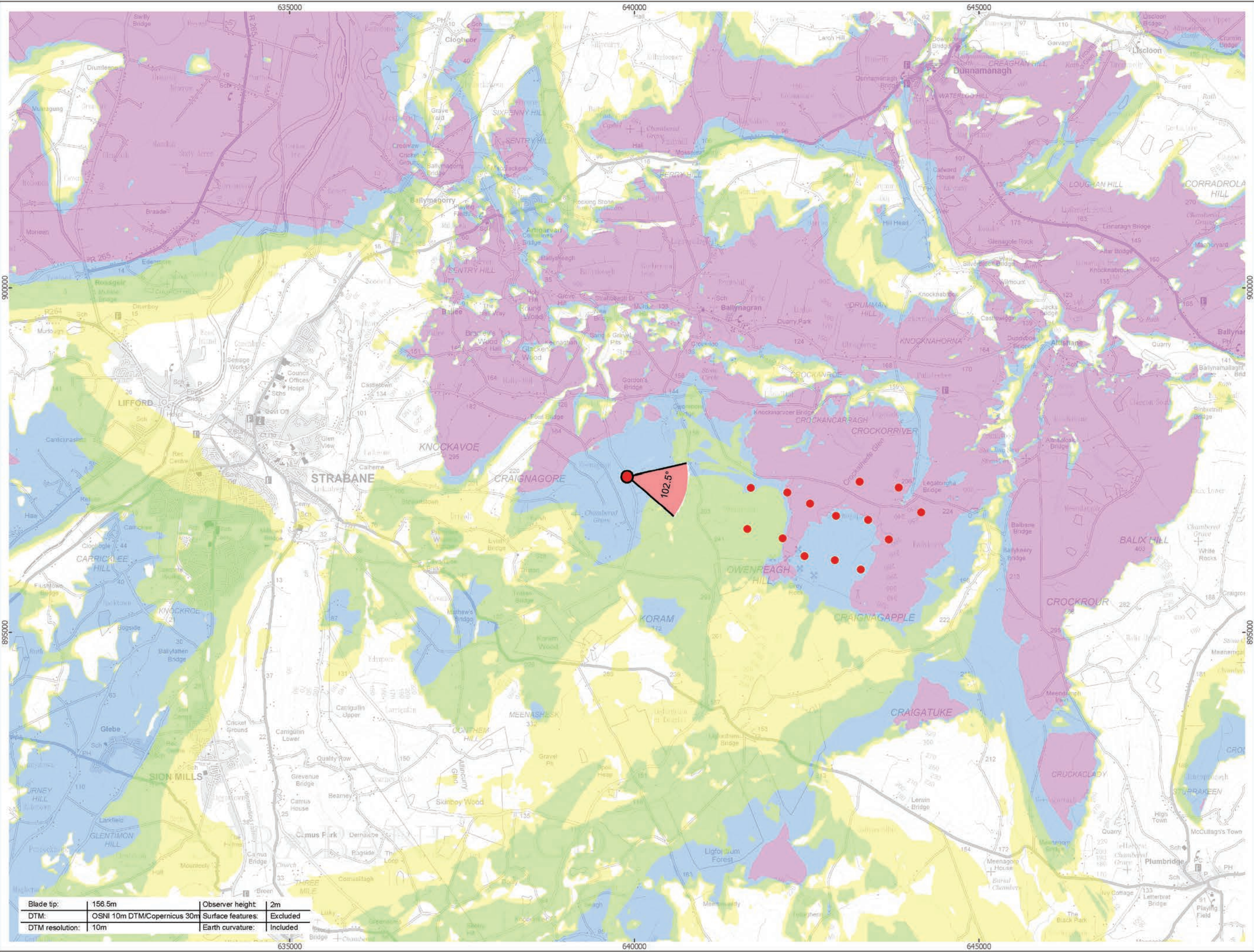
Photomontage: Proposed Development

View flat at a comfortable arm's length

OS reference:	239053 E 382091 N	Horizontal field of view:	53.5° (planar projection)	Camera:	Canon EOS 5D Mark II	Figure 6.48g
Eye level:	420.5 mAOD	Principal distance:	812.5 mm	Lens:	EF50mm f/1.4 USM	Viewpoint 23: Bessy Bell
Direction of view:	14°	Paper size:	841 x 297 mm (half A1)	Camera height:	1.5 m	Owenreagh/Craignagapple Wind Farm
Nearest turbine:	14.45 km	Correct printed image size:	820 x 260 mm	Date and time:	10/08/2022 15:58	Contains information from the European Union Copernicus Project. ©Copernicus 2023 ©Ordnance Survey Northern Ireland 2023, licensed under the Open Government Licence v3.0.



Viewpoint Location Plan Baseline Panorama (90 Degree View)  
Scale: 1:200,000



Viewpoint Location Plan (53.5 Degree View)  
Scale: 1:50,000

open

optimised environments

PART OF SLR

Orsted

ERM

90 Degree Field of View

53.5 Degree Field of View

No. of Blade Tips Theoretically Visible

1 - 4

5 - 8

9 - 12

13 - 14

Proposed Wind Turbine

10km Radii

30km Study Area

NI/RoI Boundary Line

DONEGAL

FERMANAGH

LONDONDERRY

TYRONE

Cumulative Wind Farm Status:

Operational

Under Construction

Consented

Appeal; Application

1:50,000

Scale @ A3

0

0.5

1

2 Km

Produced By: RH

Ref:

Checked By: JP

Date: 22/03/2023

Viewpoint Plan

Figure 6.49a

VP24 - Silverhill Road

Owenreagh / Craignagapple

Wind Farm

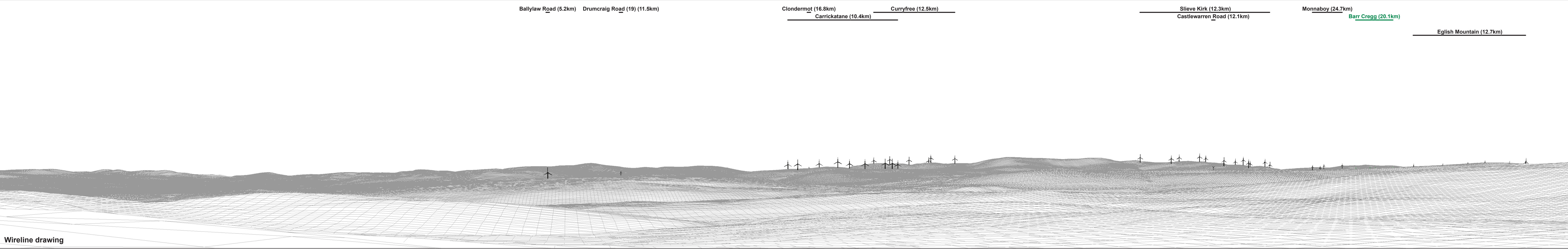
Environmental Statement

P:\2021\211591\_Owen\Map\GIS\211591\_OWEN\ES\211591\_OWEN\_ES\_Fig6-26\_to\_Fig6-50\_VP\_Plans.mxd



Baseline photograph

This image provides landscape and visual context only

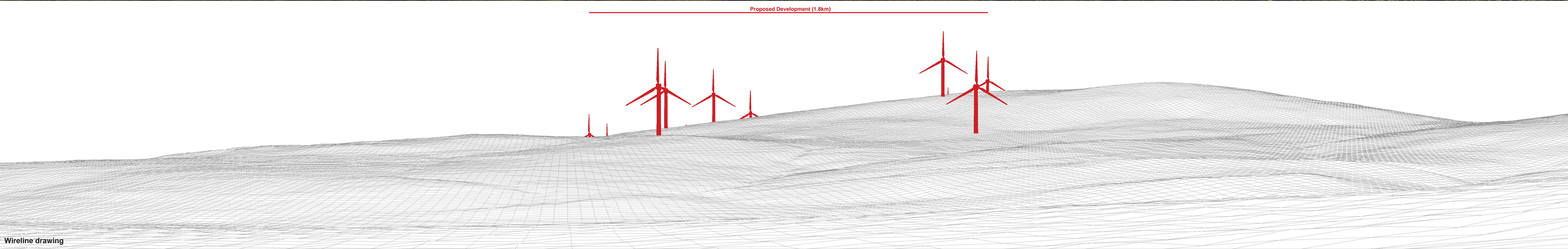


Wireline drawing

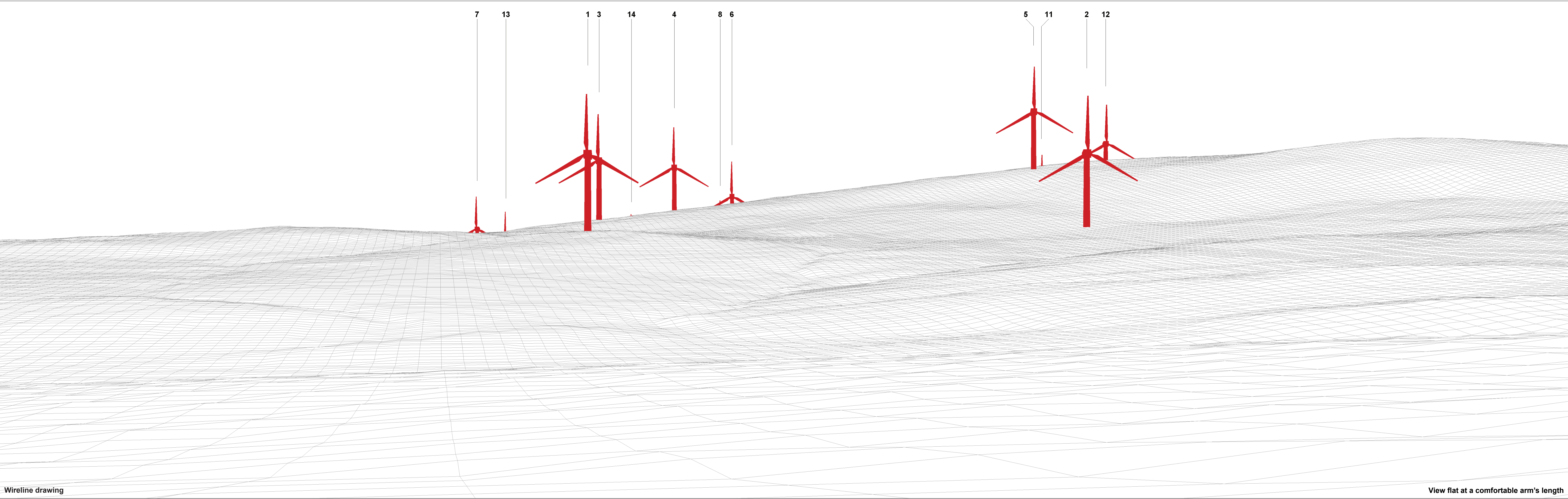


Baseline photograph

This image provides landscape and visual context only



Wireline drawing

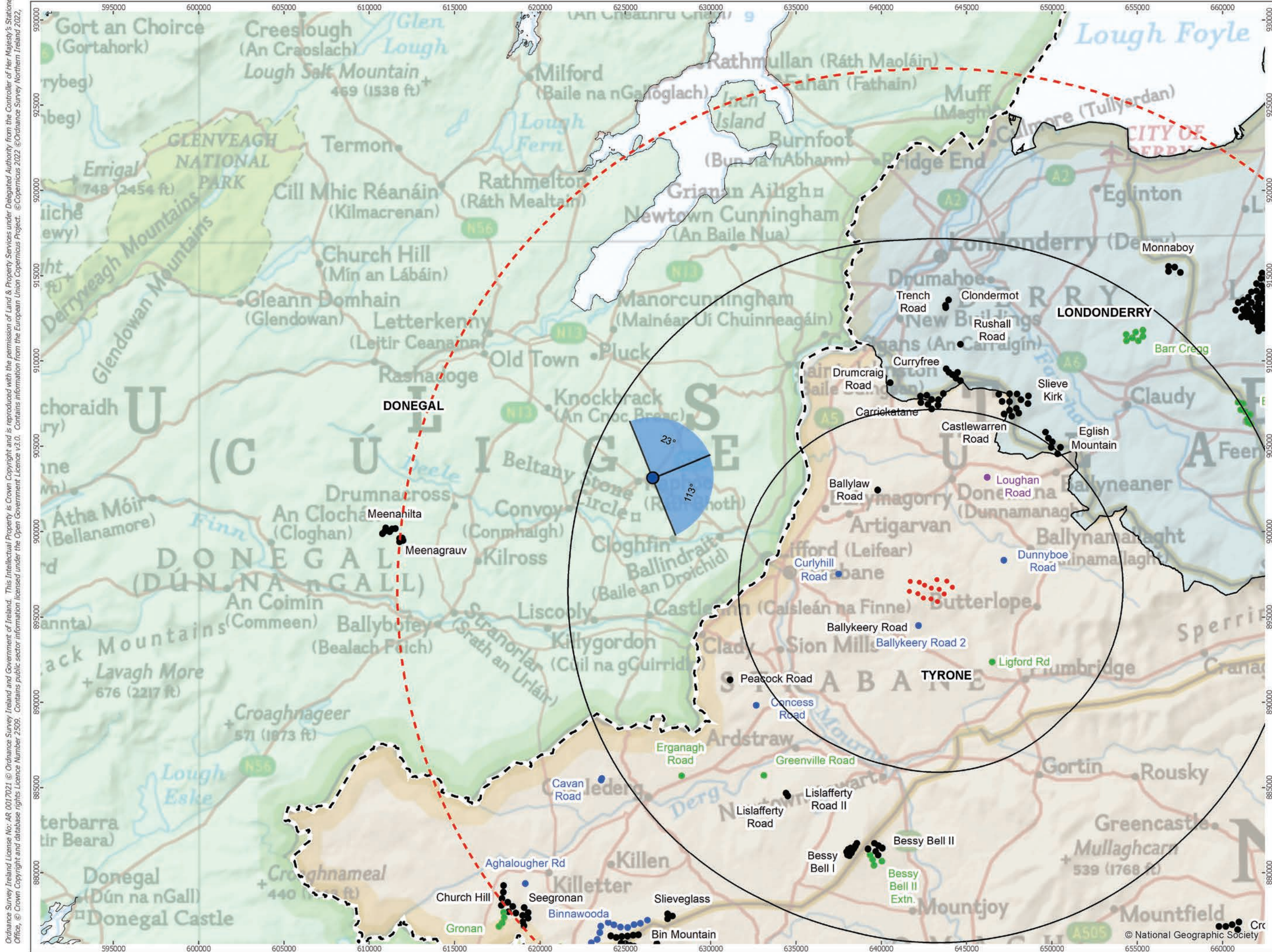




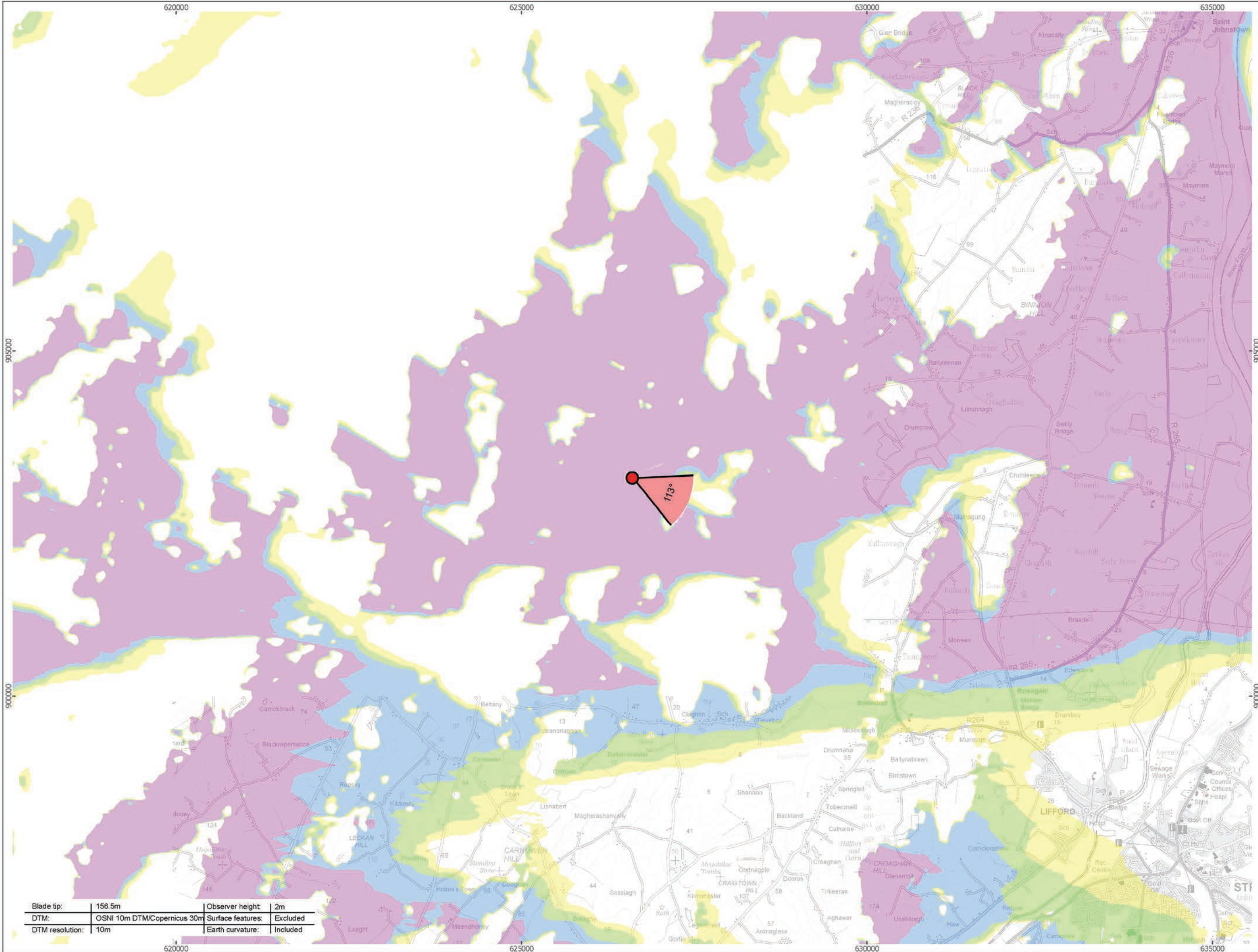
Photomontage: Proposed Development

View flat at a comfortable arm's length

OS reference:	239951 E 397271 N	Horizontal field of view:	53.5° (planar projection)	Camera:	Canon EOS 6D Mark II	Figure 6.49e
Eye level:	190.7 mAOD	Principal distance:	812.5 mm	Lens:	EF50mm f/1.4 USM	Viewpoint 24: Silverhill Road
Direction of view:	102.5°	Paper size:	841 x 297 mm (half A1)	Camera height:	1.5 m	Owenreagh/Craignagapple Wind Farm
Nearest turbine:	1.81 km	Correct printed image size:	820 x 260 mm	Date and time:	01/07/2021 17:12	Contains information from the European Union Copernicus Project. ©Copernicus 2023 ©Ordnance Survey Northern Ireland 2023, licensed under the Open Government Licence v3.0.



Viewpoint Location Plan Baseline Panorama (90 Degree View)  
Scale: 1:200,000



Viewpoint Location Plan (53.5 Degree View)  
Scale: 1:50,000

open

optimised environments

PART OF SLR

Orsted

ERM

90 Degree Field of View

53.5 Degree Field of View

No. of Blade Tips Theoretically Visible

1 - 4

5 - 8

9 - 12

13 - 14

Proposed Wind Turbine

10km Radii

30km Study Area

NI/RoI Boundary Line

DONEGAL

LONDONDERRY

TYRONE

Cumulative Wind Farm Status:

Operational

Under Construction

Consented

Appeal; Application

1:50,000 Scale @ A3

0 0.5 1 2 Km

NORTH

Produced By: RH

Ref:

Checked By: JP

Date: 22/03/2023

Viewpoint Plan

Figure 6.50a

VP25 - Raphoe

Owenreagh / Craignagapple

Wind Farm

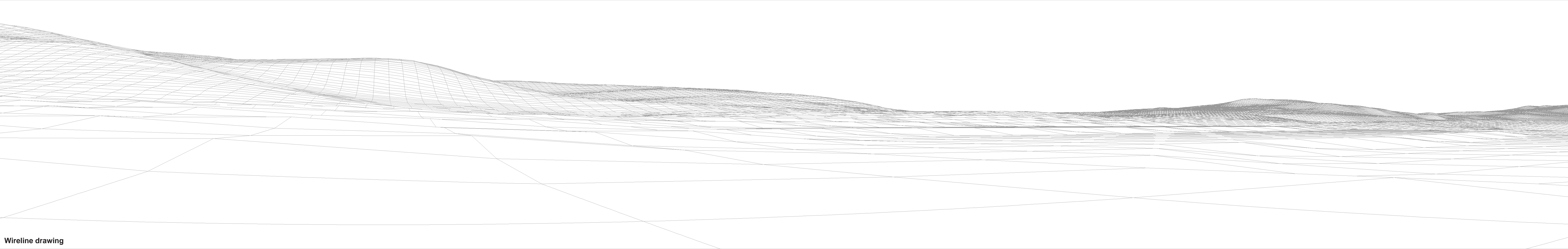
Environmental Statement

P:\2021\211591\_OwenVIA\GIS\211591\_OWEN\ES\211591\_OWEN\_ES\_Fig6-26\_to\_Fig6-50\_VP\_Plans.mxd



Baseline photograph

This image provides landscape and visual context only

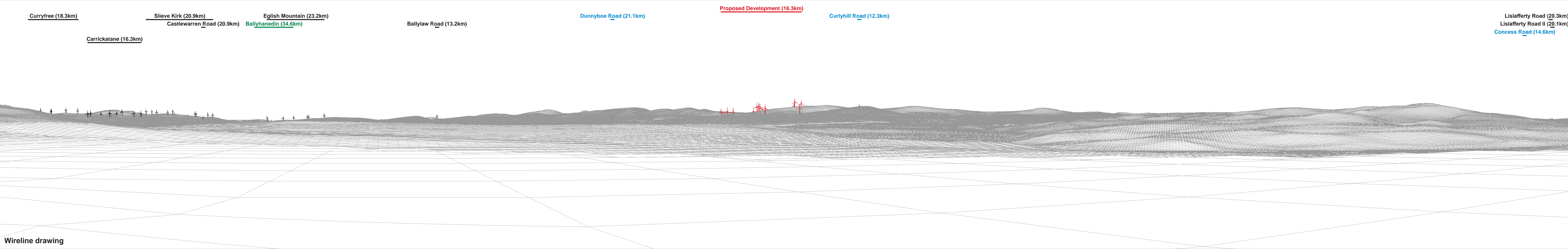


Wireline drawing



Baseline photograph

This image provides landscape and visual context only



Wireline drawing

OS reference:	226656 E 403175 N	Horizontal field of view:	90° (cylindrical projection)	Camera:	Canon EOS 5D Mark II	Figure 6.50c
Eye level:	60.5 mAOD	Principal distance:	522 mm	Lens:	EF50mm f/1.4 USM	Viewpoint 25: Raphoe
Direction of view:	113°	Paper size:	841 x 297 mm (half A1)	Camera height:	1.5 m	Owenreagh/Craignagapple Wind Farm
Nearest turbine:	16.27 km	Correct printed image size:	820 x 130 mm	Date and time:	10/08/2022 13:50	Contains information from the European Union Copernicus Project. ©Copernicus 2023 ©Ordnance Survey Northern Ireland 2023, licensed under the Open Government Licence v3.0.



Wireline drawing

View flat at a comfortable arm's length

<b>OS reference:</b>	226656 E 403175 N	<b>Horizontal field of view:</b>	53.5° (planar projection)	<b>Camera:</b>	Canon EOS 5D Mark II
<b>Eye level:</b>	60.5 mAOD	<b>Principal distance:</b>	812.5 mm	<b>Lens:</b>	EF50mm f/1.4 USM
<b>Direction of view:</b>	113°	<b>Paper size:</b>	841 x 297 mm (half A1)	<b>Camera height:</b>	1.5 m
<b>Nearest turbine:</b>	16.27 km	<b>Correct printed image size:</b>	820 x 260 mm	<b>Date and time:</b>	10/08/2022 13:50

Figure 6.50d  
Viewpoint 25: Raphoe

Owenreagh/Craignagapple Wind Farm

Contains information from the European Union Copernicus Project. ©Copernicus 2023 ©Ordnance Survey Northern Ireland 2023, licensed under the Open Government Licence v3.0.



Photomontage: Proposed Development

View flat at a comfortable arm's length

OS reference:	226656 E 403175 N	Horizontal field of view:	53.5° (planar projection)	Camera:	Canon EOS 5D Mark II	Figure 6.50e
Eye level:	60.5 mAOD	Principal distance:	812.5 mm	Lens:	EF50mm f/1.4 USM	Viewpoint 25: Raphoe
Direction of view:	113°	Paper size:	841 x 297 mm (half A1)	Camera height:	1.5 m	Owenreagh/Craignagapple Wind Farm
Nearest turbine:	16.27 km	Correct printed image size:	820 x 260 mm	Date and time:	10/08/2022 13:50	Contains information from the European Union Copernicus Project. ©Copernicus 2023 ©Ordnance Survey Northern Ireland 2023, licensed under the Open Government Licence v3.0.