

New England Survey Activity

Mariners Briefing

Date of Notice: March 3, 2019

Notice No. 029

Overview

These briefings are intended to update mariners on marine operations for the Revolution Wind and South Fork Wind Farm surveys. Survey operations are planned to support both lease areas (see chart). These operations involve only the survey phase of the projects.

Mariners briefings are submitted as needed to the U.S. Coast Guard and distributed to the fishing community and interested mariners on our website at: us.orsted.com/mariners or via email upon request through Rodney Avila (RODAV@orsted.com).

Vessels will designate a working channel on VHF 16 daily at 0600 and 1800

About the Wind Farm

The South Fork Wind Farm (SFWF) is a planned offshore wind farm located 30 miles east of Montauk that will consist of approximately 15 wind turbines. Revolution Wind is a 700 MW offshore wind farm serving Rhode Island and Connecticut. Both wind farms will contain an offshore substation, and a subsea transmission system able to deliver clean energy to their respective states.

Ongoing Survey Activities

- Projected end: February 2019
- For general information on the wind farms, please visit: us.orsted.com/Wind-projects.

Contact

For fisheries related inquiries:

Rodney Avila
Corporate Fisheries Liaison
Phone: 857.332.4479
Email: RODAV@orsted.com

John O'Keeffe
Director Marine Affairs
Phone: 857.332.4485
Email: JOHNO@orsted.com

Julia Prince
CT/NY Fisheries Liaison
Phone: 857.348.3263
Email: JULPR@orsted.com



Conti

The Conti is a shallow water vessel used for geotechnical surveying. Length is 210', with a 54' breadth. Registered gross tonnage of the vessel is 1708 t.

Call Sign: WDD3645
IMO: 9285299



Westerly

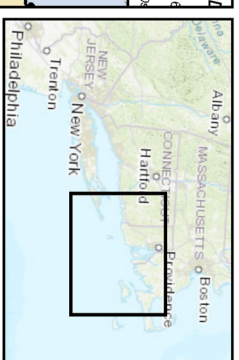
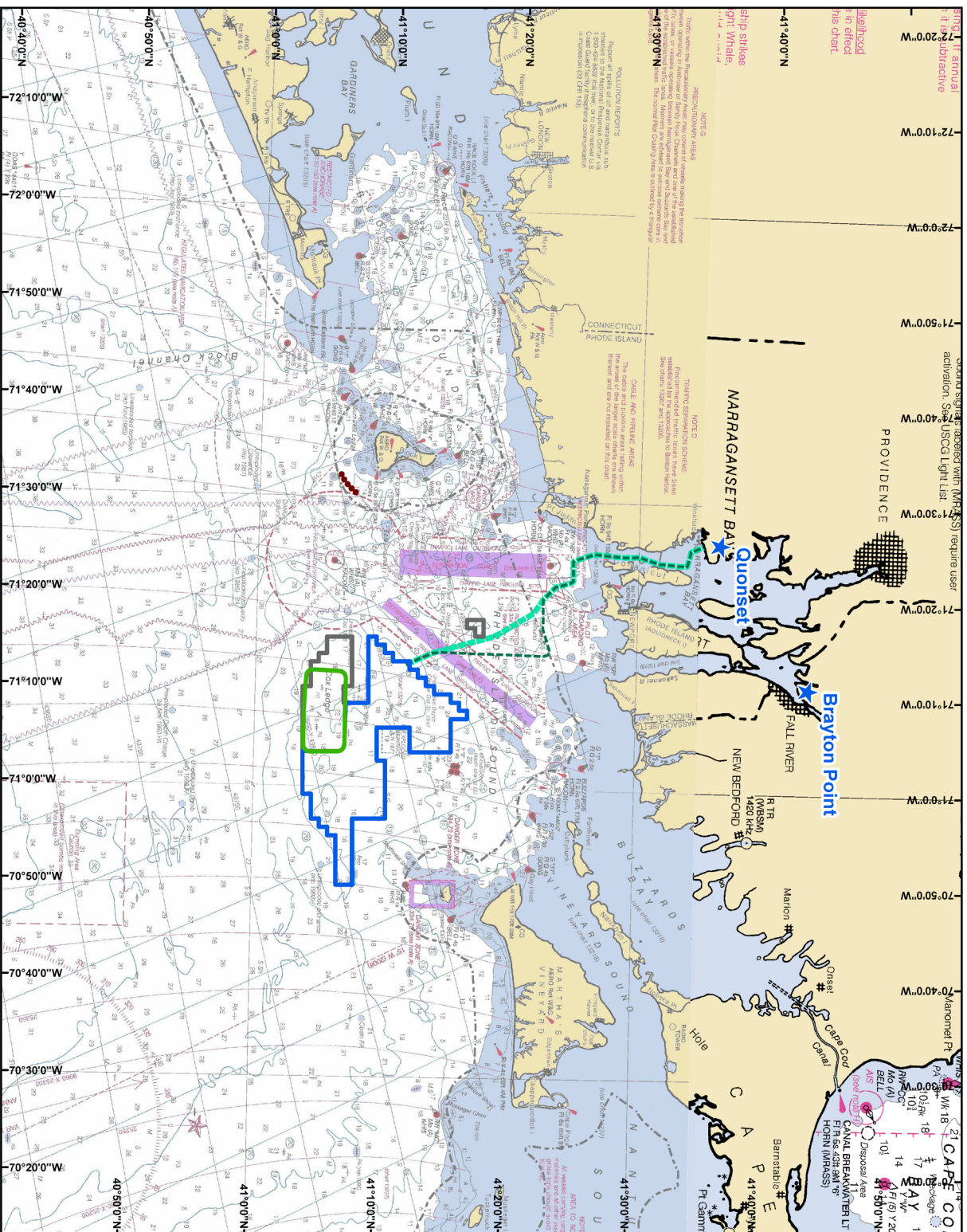
The Westerly is a shallow water vessel used for geophysical surveying. Length is 46', with a 16' breadth.

Call Sign: WDf7918

*Expected survey vessels / subject to change

Vessel Name	Site Function	Project	Date/Activity	Projected Outlook
Conti	Geotechnical survey vessel	South Fork Wind Farm	Vessel demobilized	Vessel demobilized
Westerly	Geophysical survey vessel	Revolution Wind	Vessel demobilized	Vessel demobilized

All Mariners transiting or fishing in the survey area are requested to give a wide berth to survey vessels as they may be limited in their ability to maneuver (VRAM) and towing gear out to 300 meters behind the vessel. Vessels in the vicinity of the survey vessels should operate in a manner that will not endanger the vessel or associated equipment



- Block Island Wind Farm
- Potential Interconnection Location
- 3 Nautical Mile State Waters Boundary
- Revolution Wind Farm Survey Area
- South Fork Wind Farm Survey Area
- Deepwater Wind Lease Area

Note: Survey to occur along possible cable routes to Quonset and Brayton Point. Mariners Briefings will be updated as needed.

- Potential Cable Survey Corridors**
- Option 1
 - Option 2

