

New England Survey Activity

Mariners Briefing

Date of Notice: October 17, 2019

Notice No. 040

Overview

These briefings are intended to update mariners on marine operations for Ørsted survey activities. Survey operations are planned for locations throughout the lease areas (see chart) and are expected to last several months. These operations involve only the survey phase of the projects.

Mariners briefings are submitted on Mondays and Thursdays to the U.S. Coast Guard and distributed to the fishing community and interested mariners on our website at: us.orssted.com/mariners or via email upon request through Rodney Avila (RODAV@orssted.com).

Vessels will designate a working channel on VHF 16 daily at 0600 and 1800 to communicate work plan for the next 12 hours

About the Wind Farms

Bay State Wind (BSW), Revolution Wind, and Sunrise Wind are 50-50 joint ventures between Ørsted and Eversource.

Bay State Wind is a planned offshore wind farm located 14 miles south of Martha's Vineyard.

Ongoing BSW Survey Activities

- Projected Beginning: April 2019
- Projected End: October 2019

Revolution Wind is a planned offshore wind farm located 15 miles south of the Rhode Island coast.

Ongoing Rev Survey Activities

- Projected Beginning: June 2019
- Projected End: November 2019

Sunrise Wind is a planned offshore wind farm located 30 miles east of Montauk Point.

Ongoing SRW Survey Activities

- Projected Beginning: August 2019
- Projected End: January 2020



Enterprise

MV Enterprise is used for geophysical surveying.

Flag: USA

LOA: 170 ft

Beam: 40 ft

Call Sign: WDD9388

IMO: 9473585

Project: Sunrise Wind



Kommandor Iona

MV Kommandor Iona is used for geophysical surveying.

Flag: UK

LOA: 238 ft

Beam: 48 ft

Call Sign: GAAK

IMO: 8401999

Project: Revolution Wind

*Vessel Rep Onboard



Discovery

MV Discovery is used for geophysical surveying.

Flag: Panama

LOA: 230 ft

Beam: 41 ft

Call Sign 3EKE6

IMO 9152882

Project: Revolution Wind

*Vessel Rep Onboard



Westerly

MV Westerly is used for geophysical surveying.

Flag: USA

LOA: 50 ft

Beam: 16 ft

Call Sign: WDF7918

Project: Revolution Wind

*Vessel Rep Onshore



Searcher

MV Searcher is used for geophysical surveying.

Flag: PA

LOA: 215 ft

Beam: 47 ft

Call Sign: 3EUY6

IMO: 9504011

Project: Sunrise Wind

*Vessel Rep Onboard



Conti

MV Conti is used for geotechnical surveying.

Flag: USA

LOA: 210 ft

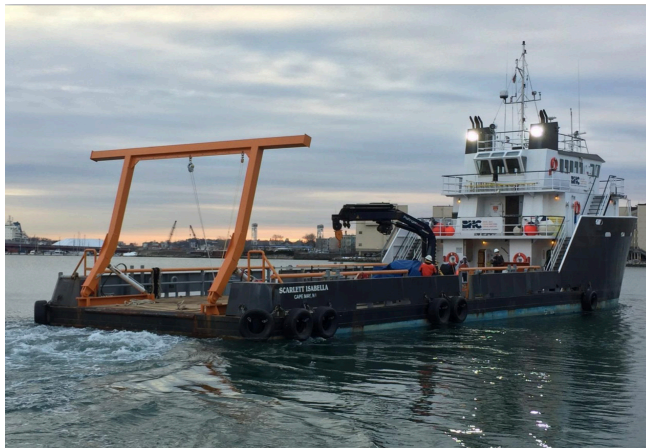
Beam: 54 ft

DWT: 2346 mt

Call Sign: WDD3645

IMO: 9285299

Project: Revolution Wind



M/V Scarlett Isabella

M/V Scarlett Isabella is used as a Scout Vessel

Flag: USA

LOA: 135 ft

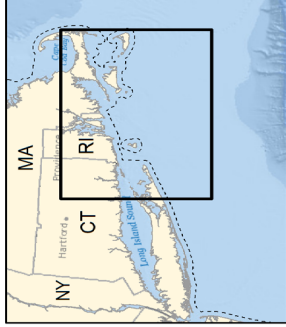
Beam: 34 ft

Call Sign: WDF2816

IMO: 9585077

Project: Revolution Wind

*Two Vessel Reps Onboard



Orsted Survey Zones

3 Nautical Mile State Waters
Boundary

Revolution and South Fork Wind
Lease OCS-A 0486

Proposed South Fork Wind
Export Cable

Potential Revolution Wind
Export Cable Route
Alternatives

Bay State Wind
Lease OCS-A 0500

Proposed Bay State Wind
Export Cable Route

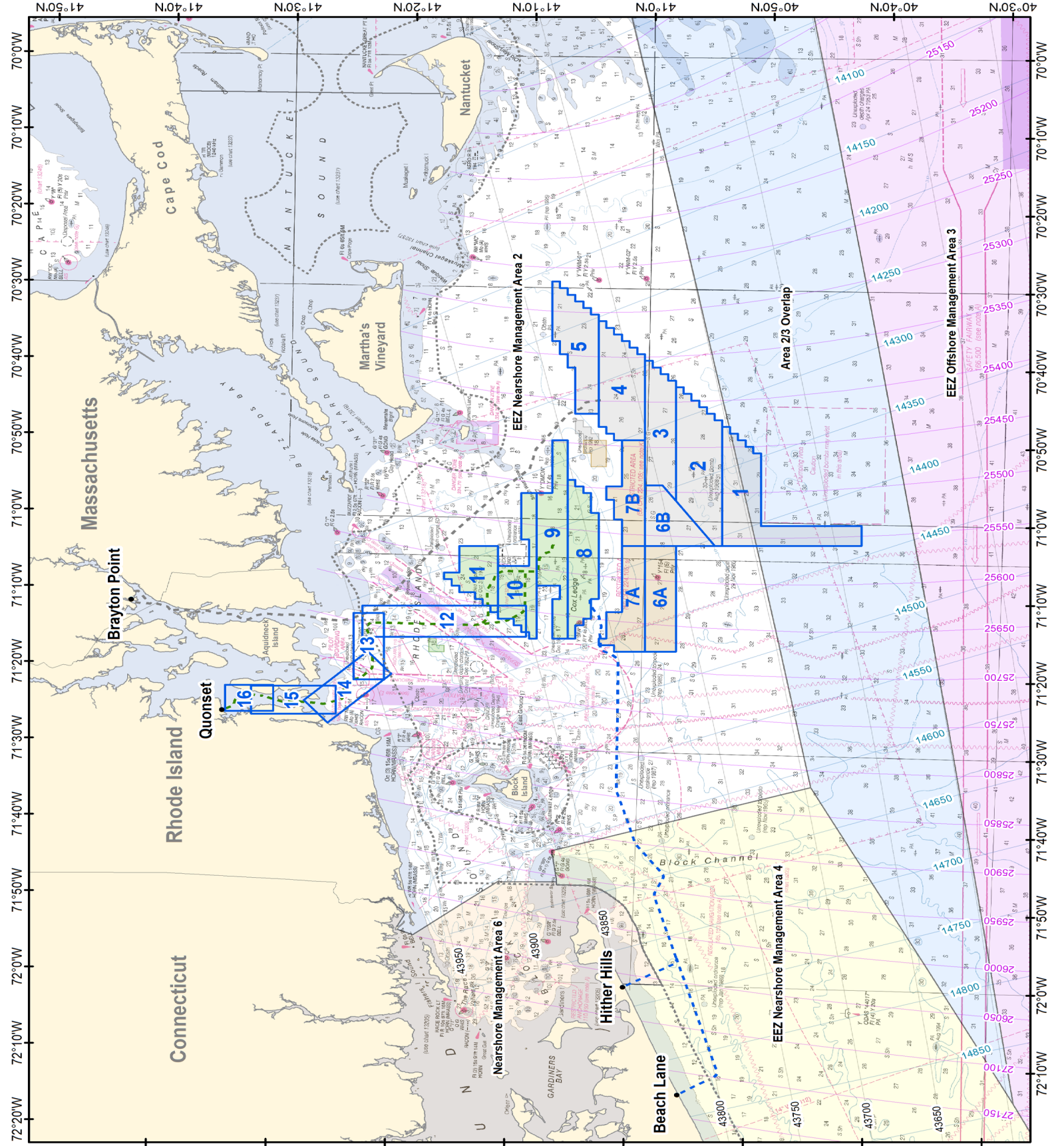
Sunrise Wind
Lease OCS-A 0487



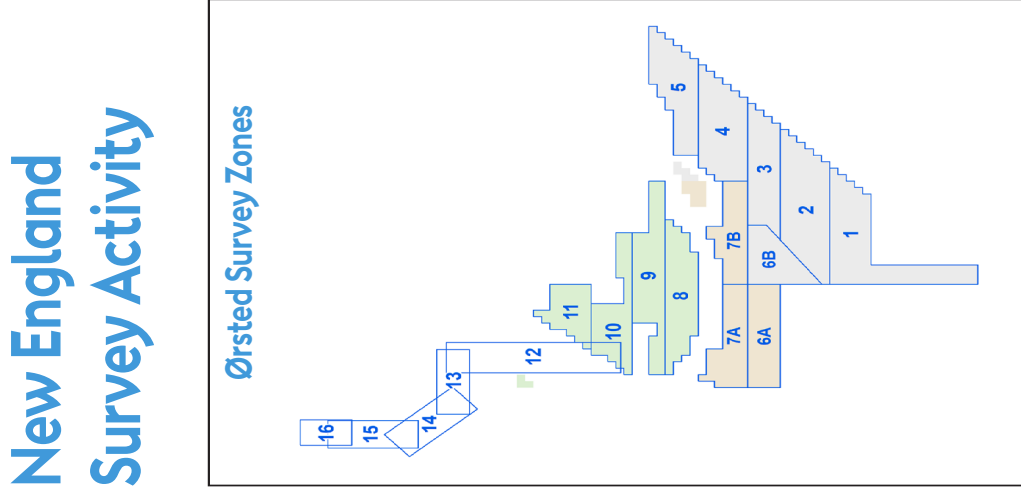
Nautical Miles
0 5 10

Kilometers
0 10 20

Depth Soundings in Fathoms
Source: BOEM, NOAA Chart 12300 (2012)
Projection: NAD 1983 UTM Zone 19N (meters)
Date: 9/26/2019



New England Survey Activity



Survey briefings are distributed to the fishing community and interested mariners on our website at: us.ørsted.com/mariners or via email upon request through Rodney Avila (RODAV@ørsted.com).

Survey Zone ID	Latitude	Longitude
8	41° 06.262' N	71° 15.474' W
	41° 06.635' N	70° 54.908' W
	41° 03.969' N	70° 59.115' W
	41° 03.769' N	71° 10.248' W
	41° 06.262' N	71° 15.474' W
9	41° 06.718' N	70° 49.765' W
	41° 08.015' N	70° 49.801' W
	41° 09.199' N	70° 56.698' W
	41° 08.986' N	71° 08.704' W
	41° 07.558' N	71° 15.519' W
10	41° 09.199' N	70° 56.698' W
	41° 10.495' N	70° 56.737' W
	41° 12.274' N	71° 06.235' W
	41° 09.681' N	71° 06.152' W
	41° 12.145' N	71° 13.100' W
11	41° 08.855' N	71° 15.563' W
	41° 12.161' N	71° 12.242' W
	41° 12.320' N	71° 03.661' W
	41° 15.561' N	71° 03.762' W
	41° 16.779' N	71° 08.099' W
12	41° 09.780' N	71° 15.359' W
	41° 23.489' N	71° 15.832' W
	41° 23.568' N	71° 11.762' W
	41° 09.858' N	71° 11.303' W
	41° 21.743' N	71° 12.654' W
13	41° 24.298' N	71° 12.740' W
	41° 24.126' N	71° 21.382' W
	41° 21.572' N	71° 21.290' W
	41° 20.959' N	71° 20.567' W
	41° 26.185' N	71° 27.115' W
14	41° 28.225' N	71° 24.243' W
	41° 22.997' N	71° 17.696' W
	41° 25.500' N	71° 25.941' W
	41° 25.577' N	71° 22.259' W
	41° 32.692' N	71° 22.518' W
15	41° 32.615' N	71° 26.208' W
	41° 30.761' N	71° 25.756' W
	41° 34.806' N	71° 25.908' W
	41° 34.877' N	71° 22.519' W
	41° 30.832' N	71° 22.371' W

Survey Zone ID	Latitude	Longitude
1	40° 53.523' N	71° 03.075' W
	40° 53.780' N	70° 47.698' W
	40° 50.485' N	70° 51.026' W
	40° 50.328' N	71° 00.415' W
	40° 41.901' N	71° 00.161' W
2	40° 41.856' N	71° 02.716' W
	40° 53.523' N	71° 03.075' W
	40° 53.780' N	70° 47.698' W
	40° 57.748' N	70° 42.673' W
	40° 57.514' N	70° 57.355' W
3	40° 57.514' N	70° 57.355' W
	40° 57.748' N	70° 42.673' W
	41° 00.391' N	70° 39.316' W
	41° 00.141' N	70° 55.433' W
	41° 00.236' N	70° 49.586' W
4	41° 00.391' N	70° 39.316' W
	41° 04.353' N	70° 34.274' W
	41° 04.152' N	70° 47.980' W
	41° 04.179' N	70° 46.267' W
	41° 04.353' N	70° 34.274' W
5	41° 08.311' N	70° 29.221' W
	41° 08.207' N	70° 36.939' W
	41° 06.213' N	70° 40.320' W
	41° 06.124' N	70° 46.319' W
	40° 57.155' N	71° 16.874' W
6A	40° 59.748' N	71° 16.963' W
	40° 57.413' N	71° 03.196' W
	41° 00.005' N	71° 03.276' W
	41° 00.141' N	70° 55.433' W
	40° 54.137' N	71° 03.094' W
6B	41° 00.005' N	71° 03.276' W
	40° 58.668' N	70° 55.390' W
	40° 59.748' N	71° 16.963' W
	41° 03.653' N	71° 16.242' W
	41° 01.950' N	71° 03.336' W
7A	41° 00.005' N	71° 03.276' W
	41° 00.236' N	70° 49.586' W
	41° 02.181' N	70° 49.639' W
	41° 03.379' N	70° 55.670' W
	41° 00.005' N	71° 03.276' W
7B	41° 01.950' N	71° 03.336' W
	41° 03.379' N	70° 55.670' W
	41° 02.181' N	70° 49.639' W
	41° 00.236' N	70° 49.586' W
	41° 00.005' N	71° 03.276' W

Ørsted Fisheries Outreach Team

John O'Keefe
Director, Marine Affairs
Email: JOHNO@ørsted.com

Rodney Avila
Corporate Fisheries Liaison
Phone: 857.332.4479
Email: RODAV@ørsted.com

Ed LeBlanc
Manager, Marine Affairs
Email: EDWLE@ørsted.com

Julia Prince
CT/NY Fisheries Liaison
Phone: 857.348.3263
Email: JULPR@ørsted.com

Caitlin O'Mara
Marine Affairs Coordinator
Email: CAIMA@ørsted.com

Fisheries Representatives

Mass Lobstermen's Association - Massachusetts
Martha's Vineyard Fishermen Preservation Trust - Massachusetts
New Bedford Port Authority - Massachusetts
Rodman Sykes - Rhode Island
Sid Holbrook - Connecticut
Erling Berg - New Jersey
Julie Evans - New York

Contact: Rodney Avila for local fisheries representatives' contact information.

Vessel Name	Site Function	Project	Outlook 10/17-10/20	Projected Outlook 10/21-10/23
Conti	Geotechnical survey activity	Bay State Wind	Complete zone 16, start mobilizing for Bay State Wind, possible start operations on Bay State Wind Export Cable Route or standby	Possible operations on Bay State Wind Export Cable Route or standby
Westerly	Geophysical survey vessel	Revolution Wind	Conducting survey activities in Survey Zones 16	Continue survey activities in Survey Zone 15
Searcher	Geophysical survey vessel	Sunrise Wind	Conducting survey activities in Survey 7A & 7B	Conducting survey activities in Survey 7A & 7B
Enterprise	Geophysical survey vessel	Sunrise Wind	Western to middle section of the ECR	Western to middle section of the ECR
Discovery	Geophysical survey vessel	Revolution Wind	Conducting survey activities in Survey Zones 8, 10	Continue survey activities in Survey Zone 8, 10
Kommandor Iona	Geophysical survey vessel	Revolution Wind	Conducting survey activities in Survey Zones 8, 10, 13, 14	Continue survey activities in Survey Zone 8, 10, 13, 14
Scarlett Isabella	Scout Vessel	Revolution Wind	Conducting survey activities in Survey Zones 8, 10, 13, 14	Continue survey activities in Survey Zone 8, 10, 13, 14

****Wx permitting / Survey operations will be conducted 24/7****

Survey vessels might at any time seek shelter in another zone then the work zone due to weather conditions