

New England Survey Activity

Mariners Briefing

Date of Notice: September 18, 2019 **Notice No.** 035

Overview

These briefings are intended to update mariners on marine operations for Ørsted survey activities. Survey operations are planned for locations throughout the lease areas (see chart) and are expected to last several months. These operations involve only the survey phase of the projects.

Mariners briefings are submitted as needed to the U.S. Coast Guard and distributed to the fishing community and interested mariners on our website at: us.orssted.com/mariners or via email upon request through Rodney Avila (RODAV@orssted.com).

Vessels will designate a working channel on VHF 16 daily at 0600 and 1800

About the Wind Farms

Bay State Wind (BSW), a 50-50 joint venture between Ørsted and Eversource, is a planned offshore wind farm located 14 miles south of Martha's Vineyard. BSW will contain an offshore substation, and a subsea transmission system able to deliver clean energy to the New England electrical grid.

Revolution Wind, a 50-50 joint venture between Ørsted and Eversource, is a planned offshore wind farm located 15 miles south of the Rhode Island coast. Revolution Wind will contain an offshore substation, and a subsea transmission system able to deliver clean energy to the New England electrical grid.

Sunrise Wind, a 50-50 joint venture between Ørsted and Eversource, is a planned offshore wind farm located 30 miles east of Montauk Point. Sunrise Wind will contain an offshore substation, and a subsea transmission system able to deliver clean energy to the New York electrical grid.

Ongoing BSW Survey Activities

- Projected Beginning: April 2019
- Projected End: September 2019

Ongoing Rev Survey Activities

- Projected Beginning: June 2019
- Projected End: November 2019

Ongoing SRW Survey Activities

- Projected Beginning: August 2019
- Projected End: October 2019



Conti

MV Conti is used for geotechnical surveying. It employs a dynamic positioning system to maintain position when on site.

Flag: USA
LOA: 210 ft
Beam: 54 ft
DWT: 2346 mt

Call Sign: WDD3645
IMO: 9285299



Regulus

MV Regulus is used for geotechnical surveying. It employs a dynamic positioning system to maintain position when on site.

Flag: USA
LOA: 272 ft
Beam: 58 ft
DWT: 3580 mt

Call Sign: WGD2987
IMO: 9582324



Gargano

MV Gargano is used for geotechnical surveying. It employs a dynamic positioning system to maintain position when on site.

Flag: British
LOA: 236 ft
Beam: 52 ft
DWT: 2244 mt

Call Sign: VSMW5
IMO: 9249403



Enterprise

MV Enterprise is used for geophysical surveying.

Flag: USA
LOA: 170 ft
Beam: 40 ft

Call Sign: WDD9388
IMO: 9473585



Kommandor Iona

MV Commander is used for geophysical surveying.

Flag: UK
LOA: 238 ft
Beam: 48 ft

Call Sign: GAAK
IMO: 8401999



Discovery

MV Discovery is used for geophysical and geotechnical surveying.

Flag: Panama
LOA: 230 ft
Beam: 41 ft

Call Sign 3EKE6
IMO 9152882

*Expected survey vessels / subject to change



Westerly

MV Westerly is used for geophysical surveying.
Flag: USA
LOA: 50 ft
Beam: 16 ft

Call Sign: WDF7918



Searcher

MV Searcher is used for geophysical surveying.
Flag: PA
LOA: 215 ft
Beam: 47 ft

Call Sign: 3EUY6
IMO: 9504011

Vessel Name	Site Function	Project	Date/Activity	Projected Outlook
Conti	Geotechnical survey activity	Revolution Wind	Sept 18 / Vessel is conducting survey activities in the lease area	Wx dependent / Vessel will continue survey activities in the lease area
Westerly	Geophysical survey vessel	Bay State Wind	Sept 18 / Vessel will transit between East Bank Pirate Cove Marine and Borden Light Marina	Wx dependent / Vessel will be alongside at East Bank Pirate Cove Marina
Searcher	Geophysical survey vessel	Sunrise Wind	Sept 18 / Vessel is conducting survey activities in the Central portion of the lease area	Wx dependent / Vessel will continue survey activities in the lease area
Enterprise	Geophysical survey vessel	Sunrise Wind	Sept 16 / Vessel is conducting survey activities in lease area	Wx dependent / Vessel will continue survey activities in the lease area
Discovery	Geophysical survey vessel	Revolution Wind	Sept 18 / Vessel is conducting survey activities in the Southern portion of the lease area	Wx dependent / Vessel will continue survey activities in the lease area
Kommandor Iona	Geophysical survey vessel	Revolution Wind	Sept 18 / Vessel is conducting survey activities in the Northern portion of the lease area	Wx dependent / Vessel will continue survey activities in the lease area

All Mariners transiting or fishing in the survey area are requested to give a wide berth to survey vessels as they may be limited in their ability to maneuver (VRAM) and towing gear out to 300 meters behind the vessel. Vessels in the vicinity of the survey vessels should operate in a manner that will not endanger the vessel or associated equipment

Contact

For fisheries related inquiries:

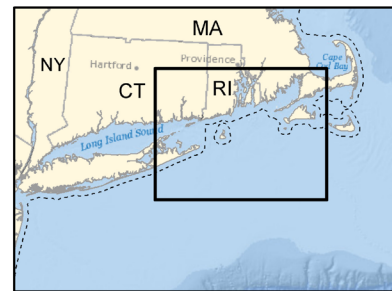
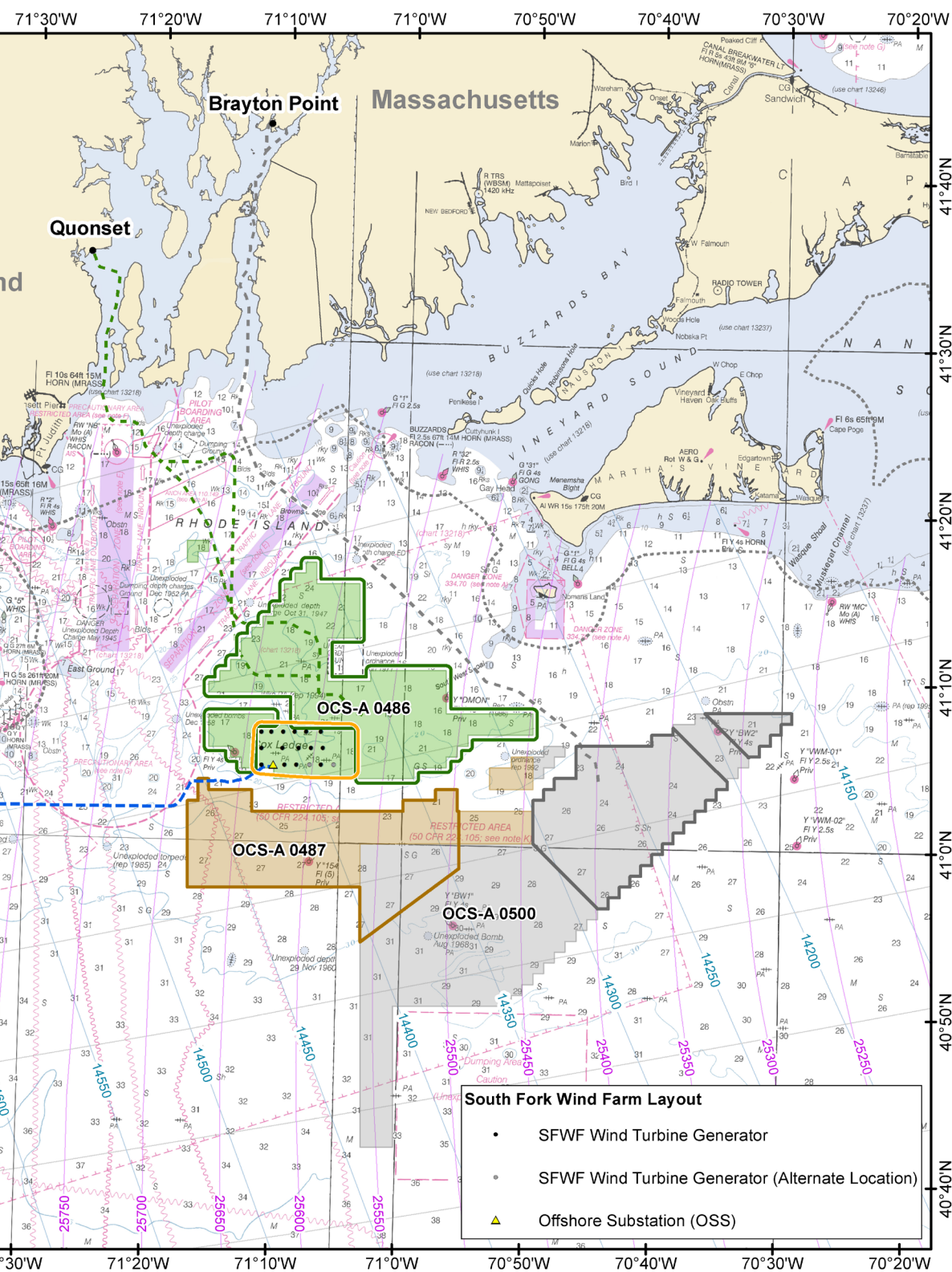
Rodney Avila
Corporate Fisheries Liaison
Phone: 857.332.4479
Email: RODAV@orsted.com

John O’Keeffe
Director Marine Affairs
Phone: 857.332.4485
Email: JOHNO@orsted.com

Julia Prince
CT/NY Fisheries Liaison
Phone: 857.348.3263
Email: JULPR@orsted.com

*Expected survey vessels / subject to change





----- 3 Nautical Mile State Waters Boundary

Lease OCS-A 0486

- South Fork Wind Farm Maximum Work Area
- Proposed South Fork Wind Export Cable
- Landing Site
- Revolution Wind Farm Survey Area
- Potential Revolution Wind Export Cable Route Alternatives

Lease OCS-A 0500

- Bay State Wind Farm Area
- Proposed Bay State Wind Export Cable Route

Lease OCS-A 0487

- Sunrise Wind Farm Survey Area



0 5 10 Nautical Miles

0 10 20 Kilometers

Orsted

Depth Soundings in Fathoms
 Source: BOEM, NOAA Chart 12300 (2012)
 Projection: NAD 1983 UTM Zone 19N (meters)
 Date: 7/16/2019

Orsted

EVERSOURCE