

Mid-Atlantic Survey Activity

Mariners Briefing

Date of Notice: September 18, 2019 Notice No. 0029

Overview

These briefings are intended to update mariners on marine operations for the Ocean Wind survey activities. Survey operations are planned for locations throughout the lease area (see chart) and are expected to last several months. These operations involve only the survey phase of the projects.

Mariners briefings are submitted as needed to the U.S. Coast Guard and distributed to the fishing community and interested mariners on our website at: us.orsted.com/mariners or via email upon request through Rodney Avila (RODAV@orsted.com).

Vessels will designate a working channel on VHF 16 daily at 0600 and 1800

About the Wind Farm

Ocean Wind (OCW), with the support of PSEG, is a planned offshore wind farm located 15 miles off the New Jersey coast. OCW will contain an offshore substation and a subsea transmission system able to deliver clean energy to the New Jersey electrical grid.

The Skipjack Wind Farm (SJWF) is an offshore wind farm planned for federal waters off the coast of Delaware and Maryland. The SJWF will consist of wind turbines, an offshore substation, and subsea transmission system to shore. Marine survey activities began in Summer 2018. Marine construction is planned to start in 2022.

Ongoing OCW Survey Activities

- Projected Beginning: April 2019
- Projected End: December 2019

Ongoing SJWF Survey Activities

- Projected Beginning: September 2019
- Projected End: December 2019

Contact

For fisheries related inquiries:

Rodney Avila
Corporate Fisheries Liaison
Phone: 857.332.4479
Email: RODAV@orsted.com

John O'Keeffe
Director Marine Affairs
Phone: 857.332.4485
Email: JOHNO@orsted.com





Shearwater

MV Shearwater is used for geophysical surveying.
Flag: USA
LOA: 108 ft
Beam: 36 ft

Call Sign: WDF5838
IMO: 8993966



Vision

LB Vision is used for geotechnical surveying.
Flag: USA
LOA: 70 ft
Beam: 39 ft

Call Sign: WDF6746
IMO: 8990976



Ocean Researcher

RV Ocean Researcher is used for geophysical surveying.
Flag: UK
LOA: 228 ft
Beam: 45 ft

Call Sign: GDLS
IMO: 8207941



Henry Hudson

RV Henry Hudson is used for the crew transfer vessel / on-site watch vessel for L/B Vision.
Flag: USA
LOA: 45 ft
Beam: 15 ft

Call Sign: WDG4894
MMSI: 367541190



Commander

MV Commander is used for geotechnical surveying. It employs a dynamic positioning system to maintain position when on site.
Flag: USA
LOA: 240 ft
Beam: 56 ft
DWT: 1921 mt

Call Sign: WDJ9154
IMO: 9132234



Neptune

MV Neptune is used for geophysical surveying.
Flag: ISL
LOA: 164ft
Beam: 31 ft

Call Sign: V7119
IMO: 7504237



William
MV William is used for inshore geophysical surveying.
LOA: 22 ft
Beam: 8 ft

Registration Number: NJ1968GZ



Conti
MV Conti is used for geotechnical surveying. It employs a dynamic positioning system to maintain position when on site.
Flag: USA
LOA: 210 ft
Beam: 54 ft
DWT: 2346 mt

Call Sign: WDD3645
IMO: 9285299



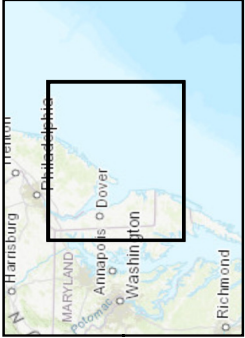
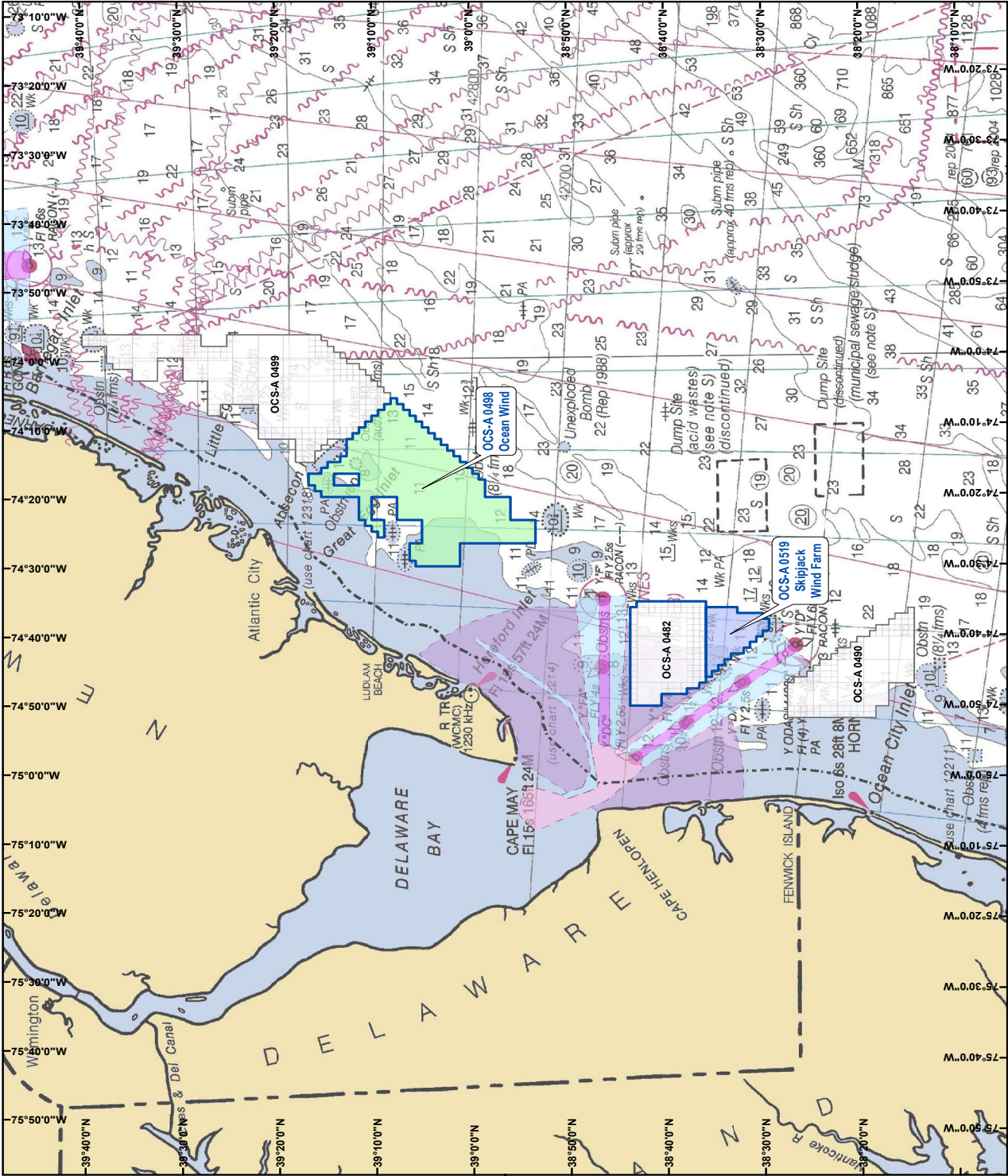
Regulus
MV Regulus is used for geotechnical surveying. It employs a dynamic positioning system to maintain position when on site.
Flag: USA
LOA: 272 ft
Beam: 58 ft
DWT: 3580 mt

Call Sign: WGD2987
IMO: 9582324

Vessel Name	Site Function	Project	Date/Activity	Projected Outlook
Ocean Researcher	Geophysical survey vessel	Ocean Wind	Sept 18 / Vessel WoW in the lease area	Wx dependent / Vessel will continue survey operations in the lease area
William	Geophysical survey vessel	Ocean Wind	Vessel not yet mobilized	Vessel not yet mobilized
Shearwater	Geophysical survey vessel	Ocean Wind	Sept 18 / Vessel docked at Liberty Landing Marina due to wx	Wx dependent / Vessel will continue survey activities in the lease area
Commander	Geotechnical survey vessel	Ocean Wind	Sept 18 / Vessel docked at the Navy Yard, Philadelphia due to wx	Wx dependent / Vessel will continue survey activities in the lease area
Neptune	Geophysical survey vessel	Ocean Wind	Sept 18 / Vessel alongside Bayonne Dry Dock	Wx dependent / Vessel will continue survey activities in the lease area
Regulus	Geotechnical Survey Operations	Skipjack Wind Farm	Sept 18 / Vessel alongside Bayonne Dry Dock	Wx dependent / Vessel will continue survey activities in the lease area
Conti	Geotechnical Survey Operations	Skipjack Wind Farm	Vessel not yet mobilized	Vessel not yet mobilized

****All Mariners transiting or fishing in the survey area are requested to give a wide berth to survey vessels as they may be limited in their ability to maneuver (VRAM) and towing gear out to 300 meters behind the vessel. Vessels in the vicinity of the survey vessels should operate in a manner that will not endanger the vessel or associated equipment****

*Expected survey vessels / subject to change



Location Map

--- 3 Nautical Mile State Waters Boundary

Orsted Lease Areas

BOEM Lease Areas

Ocean Wind Lease Area

Skipjack Wind Farm Lease Area

Shipping Lanes

Precautionary Area

Speed Restriction

Traffic Separation Scheme

Traffic Lane

Data Sources:

BOEM, NOAA Chart # 13003 (2004)

Projection:

NAD 83 UTM Zone 19N



Orsted

January 2019