









Please credit all footage to DONG Energy. If you have any questions contact [JULSA@dongenergy.co.uk](mailto:JULSA@dongenergy.co.uk)

Time and description	Screenshot
<p><b>00:15 – 01:44 Aerials of Burbo Bank Extension</b></p>	
<p>00:15 – 001:25 - Pan across windfarm.  <i>The large turbines in front are the new 8MW turbines just installed at Burbo Bank Extension. The smaller ones in the background are the 3.6MW that DONG Energy were again the first to install, at Burbo Bank 10 years ago.</i>            No sound.</p>	
<p>00:26 – 00:36 – Different aerial pan across windfarm – no sound.</p>	
<p>00:36 – 00:47 - Different aerial pan across windfarm – no sound</p>	
<p>00:48 – 00:58 – bird's eye view over 8MW turbine – no sound.</p>	

<p>00:59 – 01:04 – aerial view showing 8MW larger turbines compared to smaller 3.6MW turbines – no sound.</p>	
<p>01:04 – 01:14 – single turbine spinning during installation, <i>Offshore substation behind (to the left) and turbine installer directly behind. The other turbines have not been commissioned at this stage therefore not spinning.</i></p>	
<p><b>01:14 – 01:55 – General footage of Burbo Bank Extension</b></p>	
<p>01:15 – 01:24 – brighter shot of three turbines spinning from boat-level with background sound.</p>	
<p>01:25 – 01:33 – more turbines spinning from boat-level, brighter shot with background sound.</p>	

01:34 – 01:44 – “arty”-shot, turbines spinning in front of one another, with background sound.



01:45 – 01:55 Boat sailing next to spinning turbine, with sound.

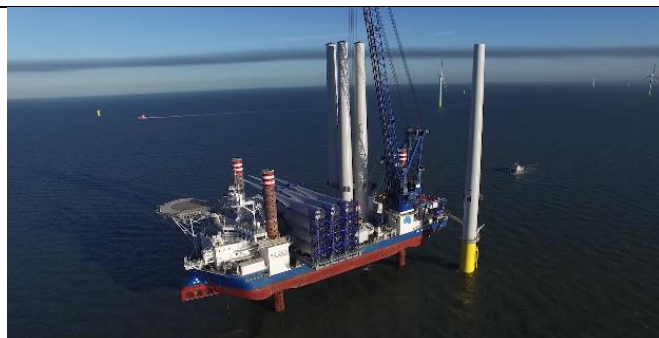


## 01:55 – 02:27 Installation of turbine offshore

01:55 – 02:03 jack up vessel next to turbine tower, with other towers and blades on the vessel, no sound.



02:04 – 02:16 different perspective - jack up vessel next to turbine tower, with other towers and blades on the vessel, no sound.



02:16 – 02:26 different perspective -  
The tower now has a nacelle on...jack  
up vessel next to turbine tower, with  
other towers and blades on the vessel.  
No sound.

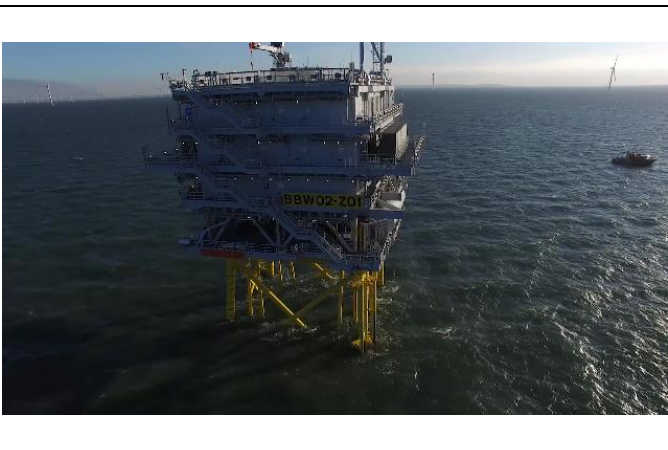


## 02:27 – 02:50 Offshore substation

02:27 – 02:39 – Offshore substation.  
Receives the electricity from the  
turbines and converts it from 33kV to  
220kV. It is 40 m long and it weighs  
more than 2,000 tonnes. The electricity  
then travels to shore via around 25 km  
of under-sea cables. No sound.

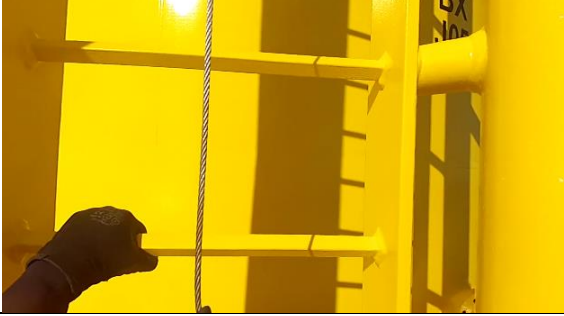


02:39 – 02:50 – offshore substation,  
different perspective, no sound.



## 02:50 – 03:49 Engineers transferring onto the 8MW turbines

02:50 – 03:29 Head cam footage of  
engineer climbing ladder up transition  
piece, no sound.



03:29 – 03:44 from boat footage of engineer climbing up transition piece – background sound.



03:44 – 03:48 different perspective, engineer transferring onto 8MW turbine. Can see blades spinning. Background sound.



### 03:49 – 05:07 Maintenance works at Burbo Bank Extension

03:49 – 04:30 Two engineers undertaking maintenance at the top of the 8MW turbine. With sound.

Each turbine is 195m tall, taller than the Gherkin in London. (Twice as tall as Aarhus Cathedral in Denmark)

Various angles and close up shots.



04:31 – 04:47 Head cam footage of maintenance on transition piece. Background sound.



04:47 – 05:07 Engineer working on the offshore substation. Background sound.



## 05:07 – 05:26 Signage

05:07 – 05:15 Burbo Bank Extension sign, inside. No sound.



05:15 – 05:26 – Burbo Bank Extension sign, outside. No sound.

